

NOKOKO — GALEON YACHTS



Builder: GALEON YACHTS

Year Built: 2023

Model: Motor Yacht

Price: \$3,575,000 USD

Location: United States

LOA: 68' 3" (20.8mm)

Beam: 16.08

Min Draft: 3' 7" (1.08mm)

Max Draft: 5' (1.5mm)

Cruise Speed: 24 Knots Kts. (28 MPH)

Max Speed: 32 Knots Kts. (37 MPH)

Our experienced yacht broker, Andrey Shestakov, will help you choose and buy a yacht that best suits your needs **NOKOKO — GALEON YACHTS** from **our catalogue**. Presently, at **Shestakov Yacht Sales Inc.**, we have a wide variety of yachts available on **our sale's list**. We also work in close contact with all the big **yacht manufacturers** from all over the world.

If you would like to buy a yacht **NOKOKO — GALEON YACHTS** or would like help answering any questions concerning purchasing, selling or chartering a yacht, please call **+1(954)274-4435**

TABLE OF CONTENTS

TABLE OF CONTENTS	2
SPECIFICATIONS	5
Overview	5
Basic Information	6
Dimensions	6
Speed, Capacities and Weight	6
Accommodations	6
Hull and Deck Information	7
Engine Information	7
PHOTOS	8
_CWS2307	8
DJI_0590	8
_CWS2286	8
_CWS2313	8
_CWS2292	8
_CWS2299	8
_CWS2319	9
_CWS2264	9
_CWS2272	9
_CWS2322	9
_CWS2330	9
_CWS2336	9
_CWS2343	10
_CWS2279	10
_CWS2257	10
_CWS2252	10
_CWS2350	10
_CWS2357	10

_CWS2364	11
_CWS2371	11
_CWS2380	11
_CWS2386	11
_CWS2393	11
_CWS2400	11
_CWS2407	12
_CWS2413	12
_CWS2449	12
_CWS2428	12
_CWS2435	12
_CWS2442	12
_CWS2456	13
_CWS2462	13
_CWS2469	13
_CWS2476	13
_CWS2483	13
_CWS2497	13
_CWS2504_1	14
_CWS2511	14
_CWS2518	14
_CWS2540	14
_CWS2525	14
_CWS2532	14
DJI_0572	15
DJI_0580	15
DJI_0604	15
DJI_0607	15
CONTACTS	16

Contact details	16
Telephones	16
Office hours	16
Address	16

SPECIFICATIONS

Overview

Introducing the 2023 Galeon 640 Fly - Where Luxury Meets Innovation

ADDITIONAL FEATURES INCLUDE:

TRANSFERABLE LLC

Williams 385 Jet Tender - New all Blacked out

2 Generators

75GPH water maker

10 Under water lights

Bow sun shade goes from the flybridge to the all the way to the bow with 3 stainless poles on either side.

Flybridge lizing glass enclosure

NEW Hull paint - light Metallic grey

Prepare to embark on an extraordinary journey aboard on the 2023 Galeon 640 Fly. This exceptional yacht redefines luxury, seamlessly blending contemporary design and expertly hand-crafted interiors, transcending mere form and function to create an unparalleled experience on the open seas. ****Innovative Layout:**** The 640 FLY takes a bold and innovative approach to layout, setting it apart from the rest. With its four staterooms plus a captain's quarters, this yacht offers a truly unique and spacious living arrangement that ensures maximum comfort for you and your guests. No detail has been spared in ensuring the utmost convenience and luxury throughout.

****Performance Beyond Compare:**** Powered by a robust propulsion system and equipped with cutting-edge electronics, the Galeon 640 FLY delivers an unforgettable and exhilarating on-water experience. Whether you're cruising through tranquil waters or enjoying high-speed adventures, this yacht can do it all. ****Customized Comfort:**** The lower staterooms have been thoughtfully upgraded with custom bunks, ensuring that every guest on board enjoys a good night's sleep. Your guests will appreciate the attention to detail in every aspect of this vessel. ****Yacht Controller:**** To enhance your experience further, this boat comes equipped with a yacht controller, offering you effortless control and maneuverability, making docking and navigation a breeze.

Don't miss the opportunity to own a piece of maritime excellence. The 2023 Galeon 640

Fly is waiting for you to embark on your next adventure. Contact us today to schedule a viewing and experience the future of yachting.

Call Joel Romero 949.466.6264

Basic Information

Category: Motor Yacht

Sub Category: Motor Yacht

Model Year: 2023

Year Built: 2023

Country: United States

Dimensions

LOA: 68' 3" (20.8mm)

Beam: 16.08

Min Draft: 3' 7" (1.08mm)

Max Draft: 5' (1.5mm)

Speed, Capacities and Weight

Cruise Speed: 24 Knots Kts. (28 MPH) **Cruise Speed Range:** 350

Max Speed: 32 Knots Kts. (37 MPH) **Max Speed Range:** 300 Kts.

Gross Tonnage: 30.5 Pounds **Water Capacity:** 211 Gallons

Holding Tank: 343 Gal Gallons **Fuel Capacity:** 343 Gal Gallons

Accommodations

Total Cabins: 3

Total Berths: 6

Sleeps: 6

Total Heads: 2

Crew Cabin: 2

Crew Berths: 2

Crew Heads: 1

Hull and Deck Information

Hull Material: Fiberglass

Deck Material: Teak

Hull Configuration: Monohull

Hull Designer: Tony Castro

Interior Designer: Galeon

Engine Information

Engines: 2

Manufacturer: Volvo Penta

Fuel Type: Diesel

PHOTOS

DJI_0590



_CWS2307



_CWS2286



_CWS2313



_CWS2292



_CWS2299



_CWS2319



_CWS2264



_CWS2272



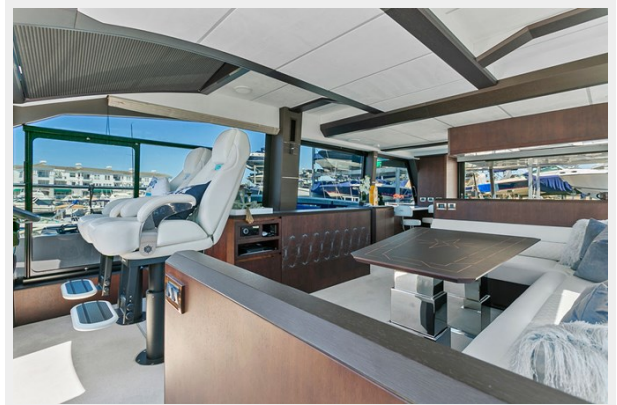
_CWS2322



_CWS2330



_CWS2336



_CWS2343



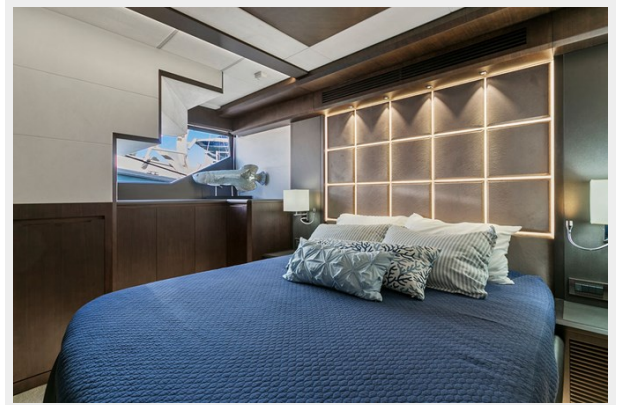
_CWS2279



_CWS2257



_CWS2252



_CWS2350



_CWS2357



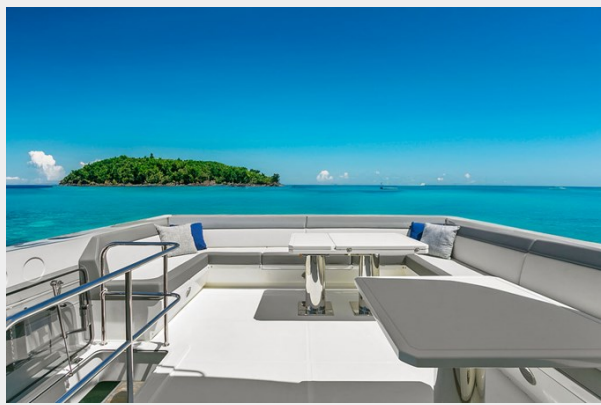
_CWS2364



_CWS2371



_CWS2380



_CWS2386



_CWS2393



_CWS2400



_CWS2407



_CWS2413



_CWS2449



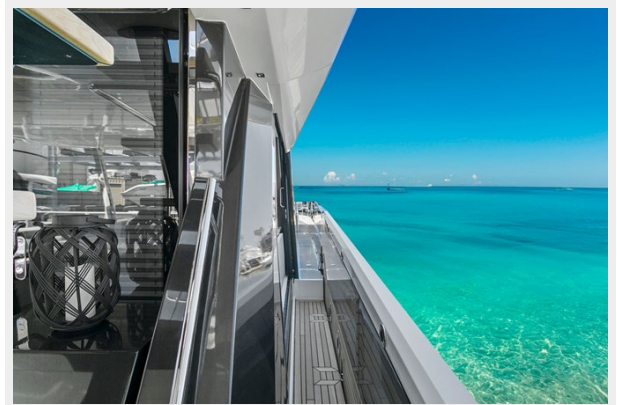
_CWS2428



_CWS2435



_CWS2442



_CWS2456



_CWS2462



_CWS2469



_CWS2476



_CWS2483



_CWS2497



_CWS2504_1



_CWS2511



_CWS2518



_CWS2540



_CWS2525



_CWS2532



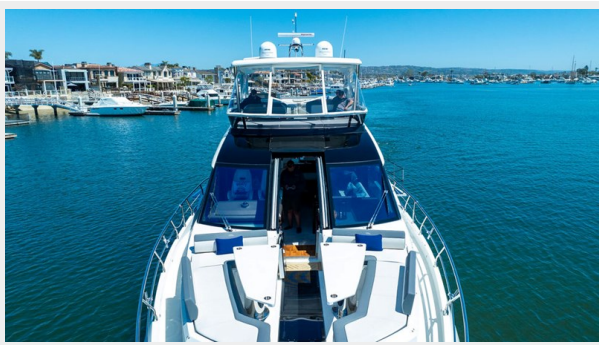
DJI_0572



DJI_0580



DJI_0604



DJI_0607



CONTACTS

Andrey Shestakov, leading yacht broker of the sales department of Shestakov Yacht Sales Inc. Shestakov Yacht Sales Inc., the official representative of the Miami/Fort Lauderdale FL headquarters.

Contact details

Email: **andrey@shestakovyachtsales.com**

Web: shestakovyachtsales.com/en/

Telephones

USA: **+1(954)274-4435**

Office hours

Monday – Saturday: **9:00 - 21:00** EDT

Sunday: **closed**

Address



Harbour Towne Marina, 850 NE 3rd St, STE 213, Dania, FL 33004