

NORTHERN ESCAPE — BENETTI



Builder: BENETTI

Year Built: 2022

Model: Motor Yacht

Price: €23,900,000 EUR

Location: Spain

LOA: 133' 11" (40.8mm)

Beam: 27.88

Max Draft: 6' 9" (2.05mm)

Cruise Speed: 15 Knots Kts. (17 MPH)

Max Speed: 17.5 Knots Kts. (20 MPH)

Our experienced yacht broker, Andrey Shestakov, will help you choose and buy a yacht that best suits your needs **NORTHERN ESCAPE — BENETTI** from our catalogue. Presently, at Shestakov Yacht Sales Inc., we have a wide variety of yachts available on our sale's list. We also work in close contact with all the big yacht manufacturers from all over the world.

If you would like to buy a yacht **NORTHERN ESCAPE — BENETTI** or would like help answering any questions concerning purchasing, selling or chartering a yacht, please call **+1(954)274-4435**

TABLE OF CONTENTS

| | |
|---|----|
| TABLE OF CONTENTS | 2 |
| SPECIFICATIONS | 5 |
| Overview | 5 |
| Basic Information | 6 |
| Dimensions | 6 |
| Speed, Capacities and Weight | 6 |
| Accommodations | 7 |
| Hull and Deck Information | 7 |
| Engine Information | 7 |
| PHOTOS | 8 |
| HighRes_NortherEscape_Edmiston_Scholey-5270 | 8 |
| HighRes_NortherEscape_Edmiston_Scholey-5168 | 8 |
| HighRes_NortherEscape_Edmiston_Scholey-5209 | 8 |
| HighRes_NortherEscape_Edmiston_Scholey-6206 | 8 |
| HighRes_NortherEscape_Edmiston_Scholey-5194 | 8 |
| HighRes_NortherEscape_Edmiston_Scholey-6027 | 8 |
| HighRes_NortherEscape_Edmiston_Scholey-6018 | 9 |
| HighRes_NortherEscape_Edmiston_Scholey-5998 | 9 |
| HighRes_NortherEscape_Edmiston_Scholey-5452 | 9 |
| HighRes_NortherEscape_Edmiston_Scholey-5457 | 9 |
| HighRes_NortherEscape_Edmiston_Scholey-5446 | 9 |
| HighRes_NortherEscape_Edmiston_Scholey-5500 | 9 |
| HighRes_NortherEscape_Edmiston_Scholey-5491 | 10 |
| HighRes_NortherEscape_Edmiston_Scholey-5506 | 10 |
| HighRes_NortherEscape_Edmiston_Scholey-5238 | 10 |
| HighRes_NortherEscape_Edmiston_Scholey-5114 | 10 |
| HighRes_NortherEscape_Edmiston_Scholey-5248 | 10 |
| HighRes_NortherEscape_Edmiston_Scholey-5328 | 10 |

| | |
|---|----|
| HighRes_NortherEscape_Edmiston_Scholey-5352 | 11 |
| HighRes_NortherEscape_Edmiston_Scholey-5356 | 11 |
| HighRes_NortherEscape_Edmiston_Scholey-5392 | 11 |
| HighRes_NortherEscape_Edmiston_Scholey-5395 | 11 |
| HighRes_NortherEscape_Edmiston_Scholey-5329 | 11 |
| HighRes_NortherEscape_Edmiston_Scholey-6251 | 11 |
| HighRes_NortherEscape_Edmiston_Scholey-5339 | 12 |
| HighRes_NortherEscape_Edmiston_Scholey-5305 | 12 |
| HighRes_NortherEscape_Edmiston_Scholey-5316 | 12 |
| HighRes_NortherEscape_Edmiston_Scholey-6380 | 12 |
| HighRes_NortherEscape_Edmiston_Scholey-5153 | 12 |
| HighRes_NortherEscape_Edmiston_Scholey-5075 | 12 |
| HighRes_NortherEscape_Edmiston_Scholey-5077 | 13 |
| HighRes_NortherEscape_Edmiston_Scholey-5085 | 13 |
| HighRes_NortherEscape_Edmiston_Scholey-5124 | 13 |
| HighRes_NortherEscape_Edmiston_Scholey-5127 | 13 |
| HighRes_NortherEscape_Edmiston_Scholey-7932 | 13 |
| HighRes_NortherEscape_Edmiston_Scholey-7944 | 13 |
| HighRes_NortherEscape_Edmiston_Scholey-5856 | 14 |
| HighRes_NortherEscape_Edmiston_Scholey-5659 | 14 |
| HighRes_NortherEscape_Edmiston_Scholey-5641 | 14 |
| HighRes_NortherEscape_Edmiston_Scholey-6051 | 14 |
| HighRes_NortherEscape_Edmiston_Scholey-7767 | 14 |
| HighRes_NortherEscape_Edmiston_Scholey-7756 | 14 |
| HighRes_NortherEscape_Edmiston_Scholey-5892 | 15 |
| HighRes_NortherEscape_Edmiston_Scholey-7828 | 15 |
| HighRes_NortherEscape_Edmiston_Scholey-7785 | 15 |
| HighRes_NortherEscape_Edmiston_Scholey-7802 | 15 |
| HighRes_NortherEscape_Edmiston_Scholey-8106 | 15 |

| | |
|---|----|
| HighRes_NortherEscape_Edmiston_Scholey-7903 | 15 |
| HighRes_NortherEscape_Edmiston_Scholey-0042 | 16 |
| HighRes_NortherEscape_Edmiston_Scholey-0035 | 16 |
| HighRes_NortherEscape_Edmiston_Scholey-0010 | 16 |
| HighRes_NortherEscape_Edmiston_Scholey-0012 | 16 |
| CONTACTS | 17 |
| Contact details | 17 |
| Telephones | 17 |
| Office hours | 17 |
| Address | 17 |

SPECIFICATIONS

Overview

NORTHERN ESCAPE is hull No. 4 in the hugely successful Oasis 40 series, built by Benetti Spa. Commissioned by an experienced owner, with significant input throughout the construction-process, she sets the bar for yachts in her class. Launched in 2022, this highly in-demand charter yacht is available for a new owner to start cruising immediately.

British studio RWD have had a large impact on yacht design with their approach to the exterior of the Oasis. Two folding platforms on the main-deck-aft both increase the beam and open up the views; adding to guest's connection with the water. This is accentuated by a transformer which folds out of the swim platform, allowing easy access to the water. Her exterior wet-bar, u-shaped built-in sofa, and infinity pool combine to make this once forgotten area of the yacht, one of the key social areas onboard.

There are three other exterior areas for guests including a sundeck to rival any 40 meter yacht. On the bridge deck aft, the exterior can only be accessed through the skylounge creating a feeling of privacy. The area forward of the bridge gives guests a great alternative to sun-bathe or enjoy a pre-dinner cocktail.

The interior and exterior spaces have been blended to create an open feel throughout the yacht. Flush door sills create a seamless harmony on both decks. The minimal but comfortable interior by New York based design firm Bonetti Kozerski Architecture resonates with guest's desire for relaxation. Large panes of glass flood the interior with natural light and allow for panoramic views.

An intelligent layout promotes flexibility. The multi-use cabin on the main-deck functions as a gym, massage room or excess storage, but can also comfortably sleep two guests thanks to two large Pullman berths and an adjoining bathroom with shower. With a pullman berth in each of the lower deck twin cabins, NORTHERN ESCAPE can sleep a total of 14 guests when required. Both twin cabins can also be set up as doubles.

The owner of NORTHERN ESCAPE had his own team of technical managers oversee the build from day one. She is built to REG code, is commercially complaint, and operates on the YET scheme. Powered by twin 1,380Hp MAN engines, she has a top speed of 17.5 knots and cruises at 15. With significant upgrades to the technical specification and a generous list of options she is an extremely well thought-out vessel.

NORTHERN ESCAPE is sold with a garage full of water-toys.

- **KEY FEATURES:**
 - Hull No. 4 of the Oasis 40 series
 - REG code/commercially compliant
 - Flexible-use cabin functions as sixth guest cabin
 - Terraced main deck aft with pool and transformer platform
 - Exterior project management since contract phase
 - Upgraded technical specification
 - Improved crew layout with larger mess, pantry, laundry
 - Six weeks of charters booked for Summer 2024

Basic Information

Category: Motor Yacht

Model Year: 2022

Year Built: 2022

Country: Spain

Dimensions

LOA: 133' 11" (40.8mm)

Beam: 27.88

Max Draft: 6' 9" (2.05mm)

Speed, Capacities and Weight

Cruise Speed: 15 Knots Kts. (17 MPH)

Cruise Speed Range: 2750

Max Speed: 17.5 Knots Kts. (20 MPH)

Max Speed Range: 1750 Kts.

Gross Tonnage: 385 Pounds

Water Capacity: 7876 Gallons

Fuel Capacity: 12944.43 Gal Gallons

Accommodations

Total Cabins: 6

Hull and Deck Information

Hull Material: GRP

Deck Material: Teak

Exterior Designer: RWD

Interior Designer: Bonetti/Kozerski
Architecture DPC

Engine Information

Engines: 2

Manufacturer: MAN

PHOTOS

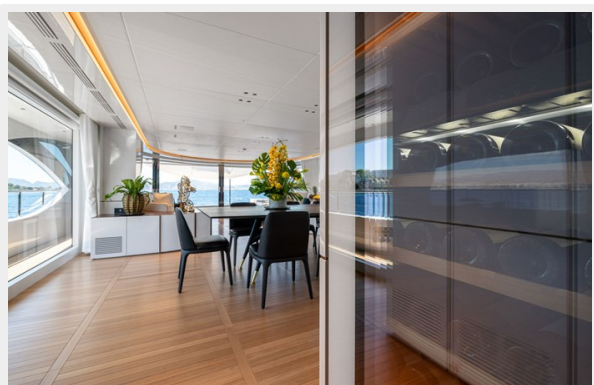
HighRes_NortherEscape_Edmiston_Scholey- HighRes_NortherEscape_Edmiston_Scholey-
5270 5168



HighRes_NortherEscape_Edmiston_Scholey- HighRes_NortherEscape_Edmiston_Scholey-
5209 6206



HighRes_NortherEscape_Edmiston_Scholey- HighRes_NortherEscape_Edmiston_Scholey-
5194 6027



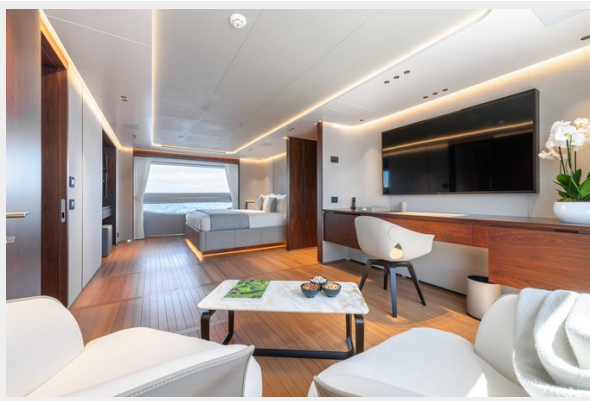
HighRes_NortherEscape_Edmiston_Scholey- HighRes_NortherEscape_Edmiston_Scholey-
6018 5998



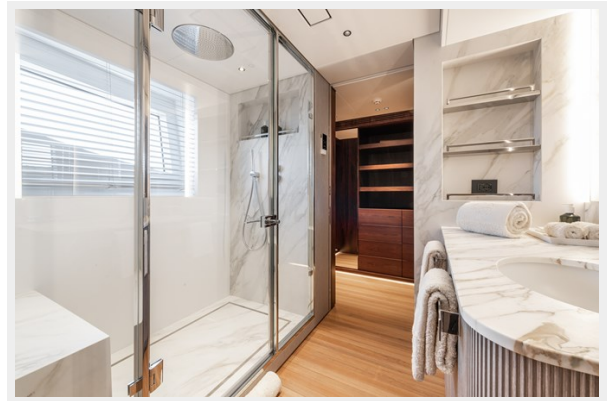
HighRes_NortherEscape_Edmiston_Scholey- HighRes_NortherEscape_Edmiston_Scholey-
5457 5452



HighRes_NortherEscape_Edmiston_Scholey- HighRes_NortherEscape_Edmiston_Scholey-
5446 5500



HighRes_NortherEscape_Edmiston_Scholey- HighRes_NortherEscape_Edmiston_Scholey-
5491 5506



HighRes_NortherEscape_Edmiston_Scholey- HighRes_NortherEscape_Edmiston_Scholey-
5238 5114



HighRes_NortherEscape_Edmiston_Scholey- HighRes_NortherEscape_Edmiston_Scholey-
5248 5328



HighRes_NortherEscape_Edmiston_Scholey- HighRes_NortherEscape_Edmiston_Scholey-
5352 5356



HighRes_NortherEscape_Edmiston_Scholey- HighRes_NortherEscape_Edmiston_Scholey-
5392 5395



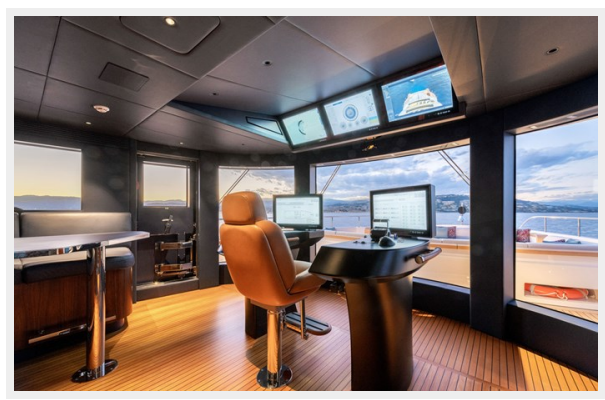
HighRes_NortherEscape_Edmiston_Scholey- HighRes_NortherEscape_Edmiston_Scholey-
5329 6251



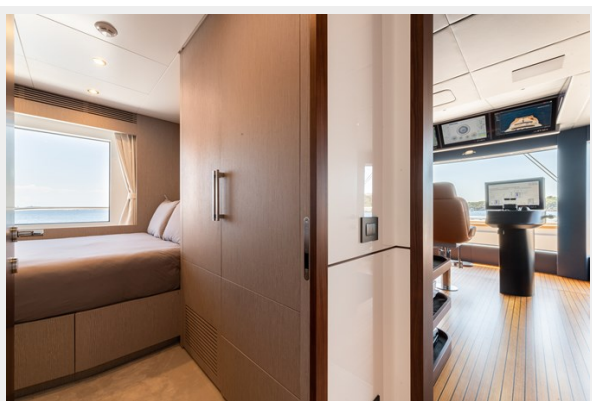
HighRes_NortherEscape_Edmiston_Scholey- HighRes_NortherEscape_Edmiston_Scholey-
5339 5305



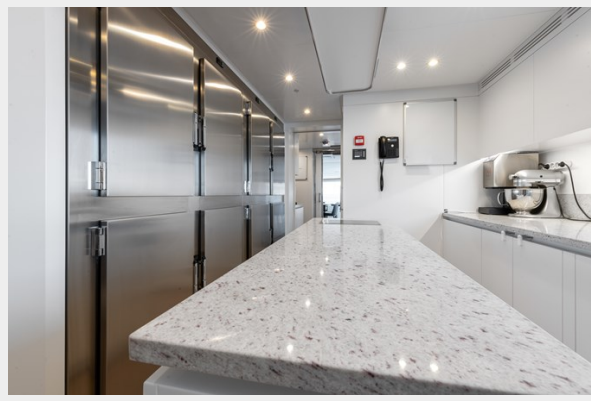
HighRes_NortherEscape_Edmiston_Scholey- HighRes_NortherEscape_Edmiston_Scholey-
5316 6380



HighRes_NortherEscape_Edmiston_Scholey- HighRes_NortherEscape_Edmiston_Scholey-
5153 5075



HighRes_NortherEscape_Edmiston_Scholey- HighRes_NortherEscape_Edmiston_Scholey-
5077 5085



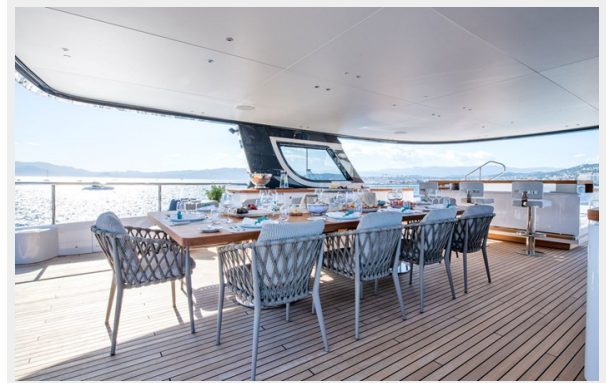
HighRes_NortherEscape_Edmiston_Scholey- HighRes_NortherEscape_Edmiston_Scholey-
5124 5127



HighRes_NortherEscape_Edmiston_Scholey- HighRes_NortherEscape_Edmiston_Scholey-
7932 7944



HighRes_NortherEscape_Edmiston_Scholey- HighRes_NortherEscape_Edmiston_Scholey-
5856 5659



HighRes_NortherEscape_Edmiston_Scholey- HighRes_NortherEscape_Edmiston_Scholey-
5641 6051



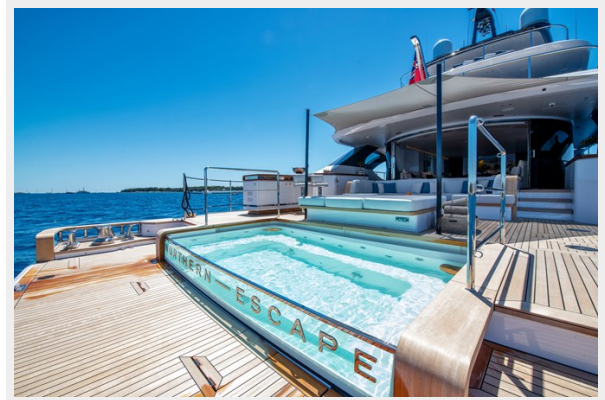
HighRes_NortherEscape_Edmiston_Scholey- HighRes_NortherEscape_Edmiston_Scholey-
7756 7767



HighRes_NortherEscape_Edmiston_Scholey- HighRes_NortherEscape_Edmiston_Scholey-
5892 7828



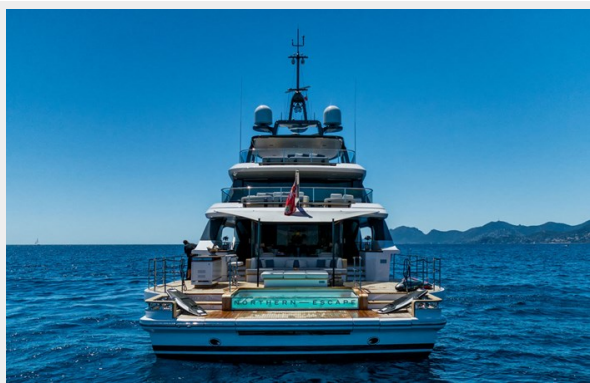
HighRes_NortherEscape_Edmiston_Scholey- HighRes_NortherEscape_Edmiston_Scholey-
7785 7802



HighRes_NortherEscape_Edmiston_Scholey- HighRes_NortherEscape_Edmiston_Scholey-
8106 7903



HighRes_NortherEscape_Edmiston_Scholey-0042



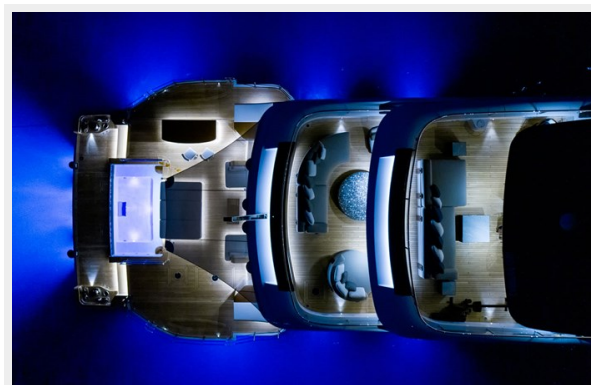
HighRes_NortherEscape_Edmiston_Scholey-0035



HighRes_NortherEscape_Edmiston_Scholey-0010



HighRes_NortherEscape_Edmiston_Scholey-0012



CONTACTS

Andrey Shestakov, leading yacht broker of the sales department of Shestakov Yacht Sales Inc. Shestakov Yacht Sales Inc., the official representative of the Miami/Fort Lauderdale FL headquarters.

Contact details

Email: andrey@shestakovyachtsales.com

Web: shestakovyachtsales.com/en/

Telephones

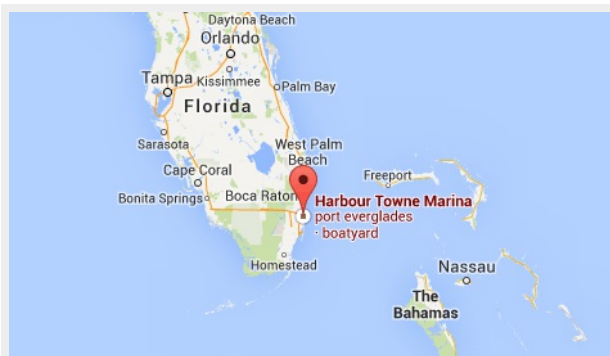
USA: +1(954)274-4435

Office hours

Monday – Saturday: **9:00 - 21:00 EDT**

Sunday: **closed**

Address



Harbour Towne Marina, 850 NE 3rd St,
STE 213, Dania, FL 33004