

# 1989 BLACK WATCH EXPRESS — BLACK WATCH



**Builder:** BLACK WATCH

**Year Built:** 1989

**Model:** walkaround

**Price:** \$36,900 USD

**Location:** United States

**LOA:** 26' (7.92mm)

**Beam:** 9.83

**Max Draft:** 2' 6" (0.76mm)

Our experienced yacht broker, Andrey Shestakov, will help you choose and buy a yacht that best suits your needs **1989 Black Watch Express — BLACK WATCH** from our catalogue. Presently, at Shestakov Yacht Sales Inc., we have a wide variety of yachts available on our sale's list. We also work in close contact with all the big yacht manufacturers from all over the world.

If you would like to buy a yacht **1989 Black Watch Express — BLACK WATCH** or would like help answering any questions concerning purchasing, selling or chartering a yacht, please call **+1(954)274-4435**

# TABLE OF CONTENTS

TABLE OF CONTENTS	2
SPECIFICATIONS	4
Overview	4
Basic Information	4
Dimensions	4
Speed, Capacities and Weight	4
Accommodations	4
Hull and Deck Information	5
Engine Information	5
PHOTOS	6
2	6
3	6
4	6
5	6
6	7
7	7
8	7
9	7
10	7
11	7
12	8
13	8
14	8
15	8
16	8
17	8
18	9
19	9

---

20	9
21	9
22	9
23	9
24	10
25	10
26	10
27	10
28	10
29	10
<b>CONTACTS</b>	<b>11</b>
Contact details	11
Telephones	11
Office hours	11
Address	11

---

# SPECIFICATIONS

---

## Overview

---

Here is a 1989 Blackwatch 26 repowered with Twin 250 HP OX66 Fuel injected counter rotating 2 stroke yamaha motors with 360 hours. She has Rupp 15ft outriggers. All new in wiring in 23 including the helm panel & AC/DC panels for all feeds. New shore power plug, motor power lines, 3 bank batteries, 3 battery switches, 3 bank charger, courtesy cockpit light, cockpit flood lights, trim tab pumps, 3 bilge pumps, high water alarms, oil pumps & filters, fuel lines, new tackle center, pressurized fresh water system and macerator head/sink and shower. Anchor with 150LF line, Fuel sending gauge, sanded and repainted bottom with ablative paint, new zincs. New 2011- Fresh water tank 25 gallons, greywater tank 10 gallons, New Simrad GEO 9 XSE with total scan transducer, Eisen glass enclosure in good shape. Contact us today for an appointment to see this awesome fishing machine!

## Basic Information

---

**Category:** walkaround

**Sub Category:** Walk-around

**Model Year:** 1989

**Year Built:** 1989

**Country:** United States

## Dimensions

---

**LOA:** 26' (7.92mm)

**Beam:** 9.83

**Max Draft:** 2' 6" (0.76mm)

## Speed, Capacities and Weight

---

**Water Capacity:** 25 Gallons

**Fuel Capacity:** 250 Gal Gallons

## Accommodations

---

**Total Cabins:** 1

**Total Heads:** 1

---

## Hull and Deck Information

---

**Hull Material:** Fiberglass

## Engine Information

---

**Engines:** 2

**Manufacturer:** Yamaha

**Engine Type:** Outboard

**Fuel Type:** Gas

# PHOTOS

2



3



4



5





6



7



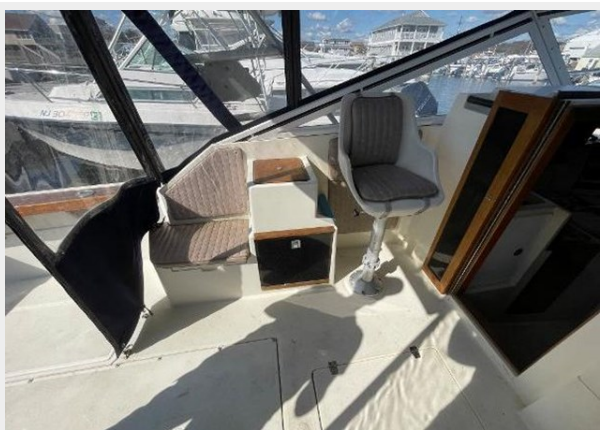
8



9



10

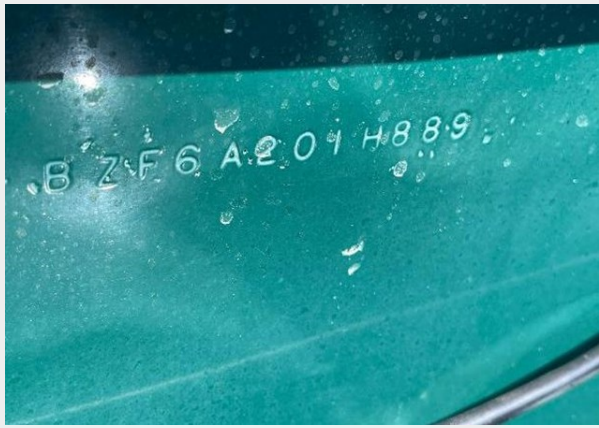


11





12



13



14



15



16



17





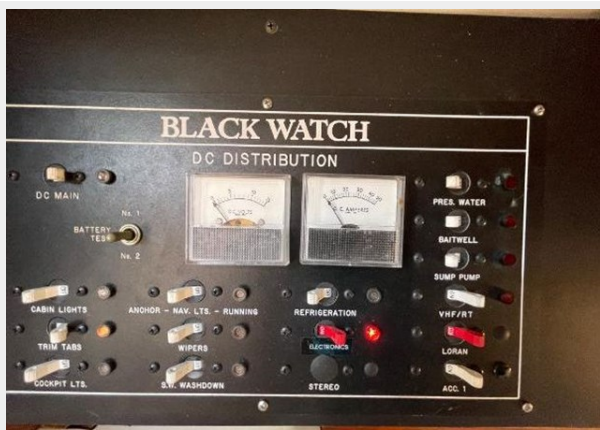
18



19



20



21



22



23



24



25



26



27



28



29





# CONTACTS

---

Andrey Shestakov, leading yacht broker of the sales department of Shestakov Yacht Sales Inc. Shestakov Yacht Sales Inc., the official representative of the Miami/Fort Lauderdale FL headquarters.

## Contact details

---

Email: [andrey@shestakovyachtsales.com](mailto:andrey@shestakovyachtsales.com)

Web: [shestakovyachtsales.com/en/](http://shestakovyachtsales.com/en/)

## Telephones

---

USA: +1(954)274-4435

## Office hours

---

Monday – Saturday: **9:00 - 21:00** EDT

Sunday: **closed**

## Address

---



Harbour Towne Marina, 850 NE 3rd St,  
STE 213, Dania, FL 33004