

2010 CUSTOM AXCELL YACHTS 650 POWER — CUSTOM



Builder: CUSTOM

Year Built: 2010

Model: Cruiser

Price: \$3,499,900 USD

Location: United States

LOA: 66' 4" (20.22mm)

Beam: 20.66

Max Draft: 3' 6" (1.07mm)

Cruise Speed: 36 Knots Kts. (41 MPH)

Max Speed: 46 Knots Kts. (53 MPH)

Our experienced yacht broker, Andrey Shestakov, will help you choose and buy a yacht that best suits your needs 2010 Custom Axcell Yachts 650 Power Catamaran — CUSTOM from our catalogue. Presently, at Shestakov Yacht Sales Inc., we have a wide variety of yachts available on our sale's list. We also work in close contact with all the big yacht manufacturers from all over the world.

If you would like to buy a yacht 2010 Custom Axcell Yachts 650 Power Catamaran — CUSTOM or would like help answering any questions concerning purchasing, selling or chartering a yacht, please call +1(954)274-4435

TABLE OF CONTENTS

TABLE OF CONTENTS	2
SPECIFICATIONS	4
Overview	4
Basic Information	5
Dimensions	5
Speed, Capacities and Weight	5
Accommodations	5
Hull and Deck Information	6
Engine Information	6
PHOTOS	7
3	7
2	7
5	7
4	7
6	7
7	7
8	8
9	8
11	8
10	8
12	8
13	8
15	9
14	9
17	9
16	9
18	9
19	9

20	10
21	10
22	10
23	10
24	10
25	10
26	11
27	11
28	11
29	11
30	11
31	11
32	12
33	12
35	12
34	12
36	12
37	12
38	13
39	13
CONTACTS	14
Contact details	14
Telephones	14
Office hours	14
Address	14

SPECIFICATIONS

Overview

This 2010 Axcell Yachts 650 one of a kind almost rides on top of the water with her air lift system. She is the only 650 ever built by Axcell Yachts. This Axcell 650 is one of a kind that is outfitted with top of the line materials. A total of three Axcell's were built, two 60 footers and this one 65. When you enter the salon door, are you entering a yacht or the Ritz Carlton? The inside is absolutely gorgeous, with a leather sofa and leather headliner throughout hardwood floors. The galley is lovely with large granite countertops, black appliances, and a lot of pantry and storage space close to the laundry room with a washer and dryer and flip-down bed. THREE STATEROOMS, yes, that's correct, three staterooms and three heads that are all outfitted with top of the line furnishings and lots of storage for an extended stay on board with a personal head adjoined to each stateroom with custom glass showers.

IT IS LOADED WITH ELECTRONICS ZF electronic steering and controls; Stidd helm seats; Lewmar bow and stern thrusters and windlass; 2/Raymarine E120 displays w/ GPS plotter and radar; Ray218 VHF; Clarion marine stereo and FLIR with the remote. Axcell 650 is a one of a kind cat that wasn't registered until Sept 2020. She was used for a manufacturer's demo vessel that traveled to boat shows, which explains low hours. The engine rooms are impressive, with many expensive stainless steel fuel lines, top-shelf Northstar AGM batteries, and some precisely loomed and laid-out electrical runs. There are two engine rooms; each engine room has a single 1,015-mhp Caterpillar C18 ACERT diesel on the centerline, a beefy but lightweight carbon-fiber jackshaft that faded into the transom's shadows, and a power-takeoff pump at the rear of the marine gear. The jackshaft coupled the engine to a fully articulated ZF MiniRex surface-piercing drive. The power-takeoff unit (in league with its twin on the port main) energized onboard hydraulics, including a Lewmar windlass and thrusters. The engineer combined a mixture of technologies and equipment to achieve enough air pressure for his desired speed and efficiency. "The air blower is all automatic. The pump takes four to seven percent of the engine's power. It's controlled and automated by a computer, so when you press the throttles forward at 1,300 rpm, the fan starts to create pressure, and the boat starts to run lighter and faster.

- Yacht was not put into service until 2020
- Yacht was fully updated and refit in 2022
- All Electronics are brand new
- Brand New Surface Drives
- Brand New Joystick
- Brand New Easy Set Drive System
- Brand New Underwater Lights (6)
- Brand New Sea Deck
- This High Performance Catamaran has unique Hover Craft
- Technology that seller is willing to sell with the boat including all plans to build them.
- Seller has all build specs and the rights to it from the prototype manufacturer

- Please contact us today for more information or to arrange a showing on this yacht.

Financing Available. World Wide Delivery Available.

Basic Information

Category: Cruiser

Sub Category: Cruiser

Model Year: 2010

Year Built: 2010

Country: United States

Dimensions

LOA: 66' 4" (20.22mm)

Beam: 20.66

Max Draft: 3' 6" (1.07mm)

Speed, Capacities and Weight

Cruise Speed: 36 Knots Kts. (41 MPH)

Max Speed: 46 Knots Kts. (53 MPH)

Water Capacity: 61000 Gallons

Fuel Capacity: 650 Gal Gallons

Accommodations

Total Cabins: 3

Total Berths: 3

Total Heads: 3

Hull and Deck Information

Hull Material: Fiberglass

Engine Information

Engines: 2

Manufacturer: Caterpillar

Engine Type: I/O

Fuel Type: Diesel

PHOTOS

2



3



4



5



6



7



8



9



10



11



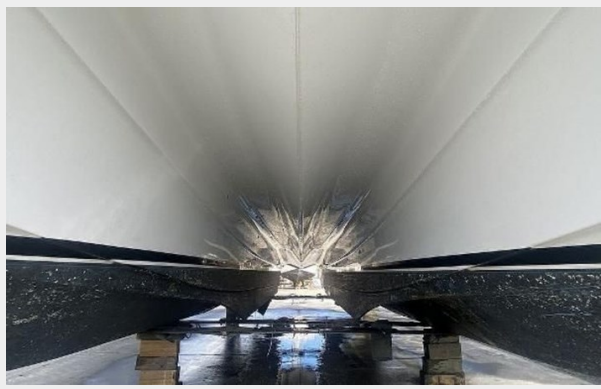
12



13



14



15



17



16



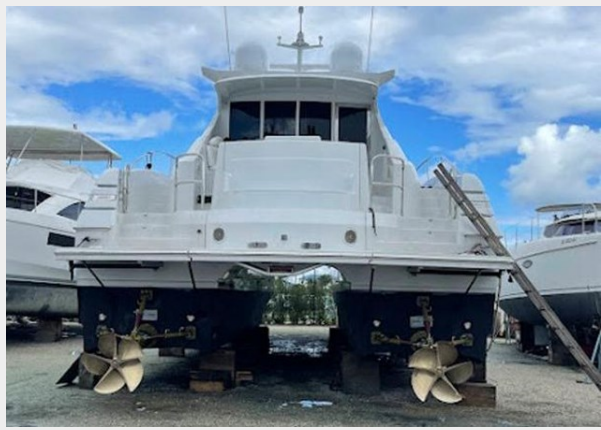
18



19



20



21



22



23



24



25



26



27



28



29



30



31



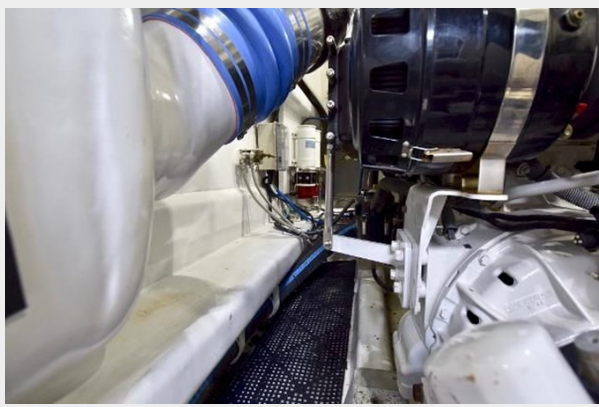
32



33



34



35



36



37



38



39



CONTACTS

Andrey Shestakov, leading yacht broker of the sales department of Shestakov Yacht Sales Inc. Shestakov Yacht Sales Inc., the official representative of the Miami/Fort Lauderdale FL headquarters.

Contact details

Email: andrey@shestakovyachtsales.com

Web: shestakovyachtsales.com/en/

Telephones

USA: +1(954)274-4435

Office hours

Monday – Saturday: **9:00 - 21:00** EDT

Sunday: **closed**

Address



Harbour Towne Marina, 850 NE 3rd St,
STE 213, Dania, FL 33004