

## SHEARWATER — CUSTOM



**Builder:** CUSTOM

**Year Built:** 2000

**Model:** Sport Fisherman

**Price:** \$49,900 USD

**Location:** United States

**LOA:** 34' (10.36mm)

**Beam:** 12.5

**Max Draft:** 2' 6" (0.76mm)

**Cruise Speed:** 22 Knots Kts. (25 MPH)

**Max Speed:** 27 Knots Kts. (31 MPH)

Our experienced yacht broker, Andrey Shestakov, will help you choose and buy a yacht that best suits your needs **Shearwater — CUSTOM** from our catalogue. Presently, at Shestakov Yacht Sales Inc., we have a wide variety of yachts available on our sale's list. We also work in close contact with all the big yacht manufacturers from all over the world.

If you would like to buy a yacht **Shearwater — CUSTOM** or would like help answering any questions concerning purchasing, selling or chartering a yacht, please call **+1(954)274-4435**

# TABLE OF CONTENTS

TABLE OF CONTENTS	2
SPECIFICATIONS	4
Overview	4
Basic Information	4
Dimensions	4
Speed, Capacities and Weight	4
Accommodations	4
Hull and Deck Information	4
Engine Information	5
PHOTOS	6
2	6
3	6
4	6
5	6
6	6
7	6
8	7
9	7
10	7
11	7
12	7
13	7
14	8
15	8
16	8
17	8
18	8
19	8

---

20	9
21	9
22	9
23	9
25	9
24	9
27	10
26	10
28	10
29	10
<b>CONTACTS</b>	<b>11</b>
Contact details	11
Telephones	11
Office hours	11
Address	11

---

# SPECIFICATIONS

---

## Overview

---

Massive Price Reduction 6/27/23! This 2000 Fitz is commercial 6 pac fishing ready! Over \$25,000 worth of new electronics put in 2021 RECENT ENGINE WORK: Valves Water hoses Alternators Fuel Lines and more Life Raft cert.

## Basic Information

---

**Category:** Sport Fisherman

**Model Year:** 2000

**Year Built:** 2000

**Country:** United States

## Dimensions

---

**LOA:** 34' (10.36mm)

**Beam:** 12.5

**Max Draft:** 2' 6" (0.76mm)

## Speed, Capacities and Weight

---

**Cruise Speed:** 22 Knots Kts. (25 MPH)

**Max Speed:** 27 Knots Kts. (31 MPH)

**Water Capacity:** 50 Gallons

**Fuel Capacity:** 150 Gal Gallons

## Accommodations

---

**Total Cabins:** 1

**Total Berths:** 1

**Total Heads:** 1

## Hull and Deck Information

---

**Hull Material:** Epoxy Composite

---

## Engine Information

---

**Engines:** 2

**Manufacturer:** Yanmar

**Engine Type:** Inboard

**Fuel Type:** Diesel

# PHOTOS

2



3



4



5



6



7





8



9



10



11



12



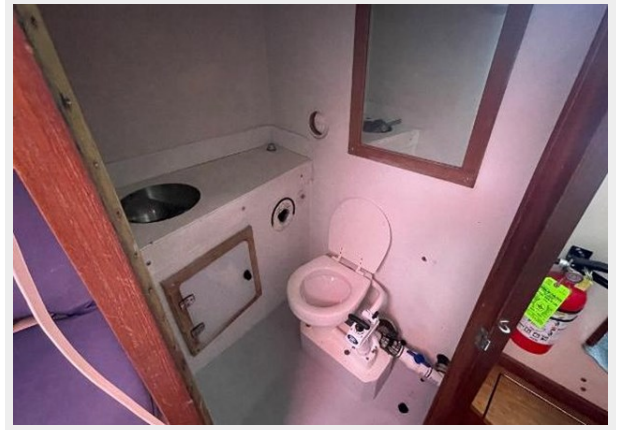
13



14



15



16



17



18



19





20



21



22



23



25



24



26



27



28



29





# CONTACTS

---

Andrey Shestakov, leading yacht broker of the sales department of Shestakov Yacht Sales Inc. Shestakov Yacht Sales Inc., the official representative of the Miami/Fort Lauderdale FL headquarters.

## Contact details

---

Email: [andrey@shestakovyachtsales.com](mailto:andrey@shestakovyachtsales.com)

Web: [shestakovyachtsales.com/en/](http://shestakovyachtsales.com/en/)

## Telephones

---

USA: +1(954)274-4435

## Office hours

---

Monday – Saturday: **9:00 - 21:00** EDT

Sunday: **closed**

## Address

---



Harbour Towne Marina, 850 NE 3rd St,  
STE 213, Dania, FL 33004