

2006 REGAL 2665 COMMODORE — REGAL



Builder: REGAL

Year Built: 2006

Model: cruiser

Price: \$44,900 USD

Location: United States

LOA: 30' 5" (9.27mm)

Beam: 8.41

Max Draft: 3' (0.91mm)

Cruise Speed: 24 Knots Kts. (28 MPH)

Max Speed: 34 Knots Kts. (39 MPH)

Our experienced yacht broker, Andrey Shestakov, will help you choose and buy a yacht that best suits your needs 2006 Regal 2665 Commodore — REGAL from our catalogue. Presently, at Shestakov Yacht Sales Inc., we have a wide variety of yachts available on our sale's list. We also work in close contact with all the big yacht manufacturers from all over the world.

If you would like to buy a yacht 2006 Regal 2665 Commodore — REGAL or would like help answering any questions concerning purchasing, selling or chartering a yacht, please call +1(954)274-4435

TABLE OF CONTENTS

TABLE OF CONTENTS	2
SPECIFICATIONS	4
Overview	4
Basic Information	4
Dimensions	4
Speed, Capacities and Weight	5
Accommodations	5
Hull and Deck Information	5
Engine Information	5
PHOTOS	6
3	6
2	6
4	6
5	6
6	6
7	6
8	7
9	7
10	7
11	7
12	7
13	7
15	8
14	8
16	8
17	8
18	8
19	8

20	9
21	9
22	9
23	9
24	9
25	9
26	10
27	10
28	10
29	10
30	10
31	10
32	11
CONTACTS	12
Contact details	12
Telephones	12
Office hours	12
Address	12

SPECIFICATIONS

Overview

This vessel is perfectly sized, the 2665 Regal is a wonderful Family Express Cruiser. This particular 2665 has just had many major upgrades and maintenance and is ready to go for her next owner. The list of recent work:

October 2022 - New Volvo Penta 5.7 MPI Vortec Engine

October 2022 - New Volvo Duo-Prop Outdrive

October 2022 - New Transom Shield

October 2022 - New Exhaust Manifolds and Risers

October 2022 - New Stainless Prop w/ Hub and Bushing

October 2022 - New Steering Cylinder and Cable

Included from Volvo Penta is a 24 month/600 hour warranty for any defects in material or workmanship.

Boat looks great and is now mechanically ready for years of stress free service. Don't miss out on this great little turn key pocket cruiser. Contact us today!

Basic Information

Category: cruiser

Sub Category: Express

Model Year: 2006

Year Built: 2006

Country: United States

Dimensions

LOA: 30' 5" (9.27mm)

Beam: 8.41

Max Draft: 3' (0.91mm)

Speed, Capacities and Weight

Cruise Speed: 24 Knots Kts. (28 MPH)

Max Speed: 34 Knots Kts. (39 MPH)

Fuel Capacity: 74 Gal Gallons

Accommodations

Total Cabins: 1

Total Berths: 4

Total Heads: 1

Hull and Deck Information

Hull Material: Fiberglass

Engine Information

Engines: 1

Manufacturer: Volvo Penta

Engine Type: I/O

Fuel Type: Gas

PHOTOS

2



3



4



5



6



7



8



9



10



11



12



13



14



15



16



17



18



19



20



21



22



23



24



25



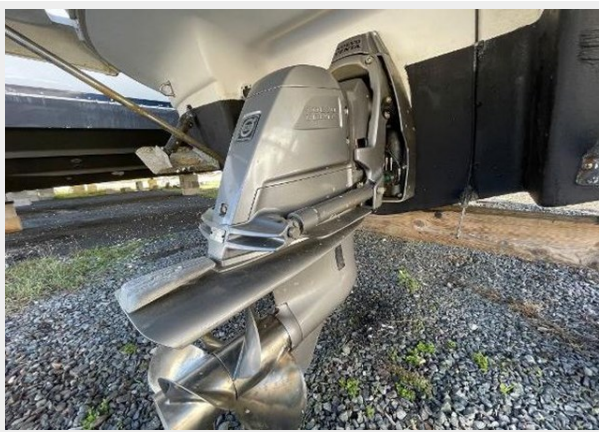
26



27



28



29



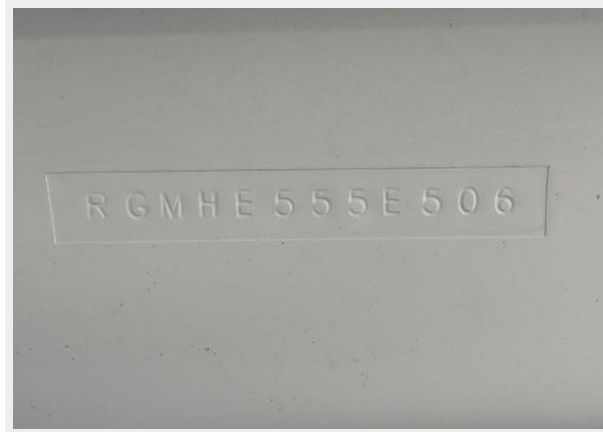
30



31



32



CONTACTS

Andrey Shestakov, leading yacht broker of the sales department of Shestakov Yacht Sales Inc. Shestakov Yacht Sales Inc., the official representative of the Miami/Fort Lauderdale FL headquarters.

Contact details

Email: andrey@shestakovyachtsales.com

Web: shestakovyachtsales.com/en/

Telephones

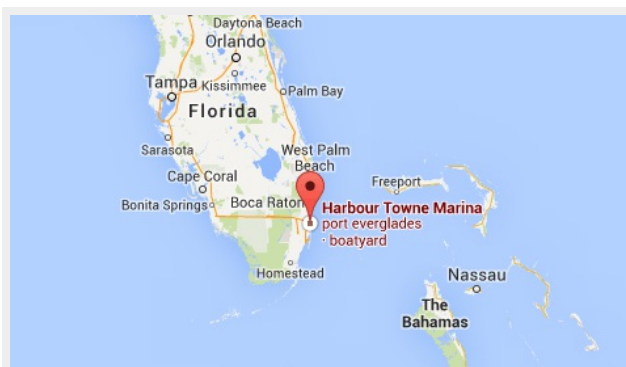
USA: +1(954)274-4435

Office hours

Monday – Saturday: **9:00 - 21:00** EDT

Sunday: **closed**

Address



Harbour Towne Marina, 850 NE 3rd St,
STE 213, Dania, FL 33004