

2003 SEALINE F425 — SEALINE



Builder: SEALINE

Year Built: 2003

Model: cruiser

Price: \$369,900 USD

Location: United States

LOA: 42' (12.8mm)

Beam: 13.66

Cruise Speed: 28 Knots Kts. (32 MPH)

Max Speed: 34 Knots Kts. (39 MPH)

Our experienced yacht broker, Andrey Shestakov, will help you choose and buy a yacht that best suits your needs **2003 Sealine F425 — SEALINE** from our catalogue. Presently, at Shestakov Yacht Sales Inc., we have a wide variety of yachts available on our sale's list. We also work in close contact with all the big yacht manufacturers from all over the world.

If you would like to buy a yacht **2003 Sealine F425 — SEALINE** or would like help answering any questions concerning purchasing, selling or chartering a yacht, please call **+1(954)274-4435**

TABLE OF CONTENTS

TABLE OF CONTENTS	2
SPECIFICATIONS	6
Overview	6
Basic Information	6
Dimensions	6
Speed, Capacities and Weight	6
Accommodations	6
Hull and Deck Information	7
Engine Information	7
PHOTOS	8
2	8
3	8
4	8
5	8
6	8
7	8
8	9
9	9
10	9
11	9
12	9
13	9
14	10
15	10
16	10
17	10
18	10
19	10

20	11
21	11
22	11
23	11
24	11
25	11
26	12
27	12
28	12
29	12
30	12
31	12
32	13
33	13
34	13
35	13
36	13
37	13
38	14
39	14
40	14
41	14
42	14
43	14
44	15
45	15
46	15
47	15
48	15

49	15
50	16
51	16
52	16
53	16
54	16
55	16
56	17
57	17
58	17
59	17
60	17
61	17
62	18
63	18
64	18
65	18
66	18
67	18
68	19
69	19
70	19
71	19
73	19
72	19
CONTACTS	20
Contact details	20
Telephones	20
Office hours	20

Address

20

SPECIFICATIONS

Overview

This 2003 Sealine F42/5 model is a rare find. Her unique sliding cockpit bench gives her the feel of a significantly larger boat. Built to a high standard for fit and finish, she is sure to satisfy the most discerning owner. Powered by 480hp Cummins diesels, her performance numbers are quite impressive with a cruise between 24 to 27 knots with a fuel burn of 28- 35 gallons per hour with a top speed around 31 knots.

Basic Information

Category: cruiser

Model Year: 2003

Year Built: 2003

Country: United States

Dimensions

LOA: 42' (12.8mm)

Beam: 13.66

Speed, Capacities and Weight

Cruise Speed: 28 Knots Kts. (32 MPH)

Max Speed: 34 Knots Kts. (39 MPH)

Fuel Capacity: 390 Gal Gallons

Accommodations

Total Cabins: 2

Total Berths: 3

Total Heads: 2

Hull and Deck Information

Hull Material: Fiberglass

Engine Information

Engines: 2

Manufacturer: Cummins

Engine Type: Inboard

Fuel Type: Diesel

PHOTOS

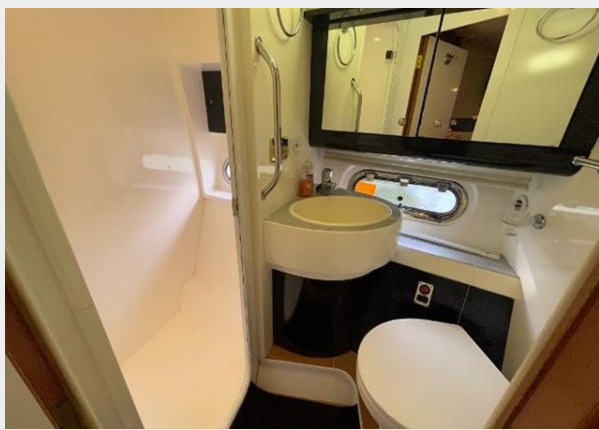
2



3



4



5



6



7



8



9



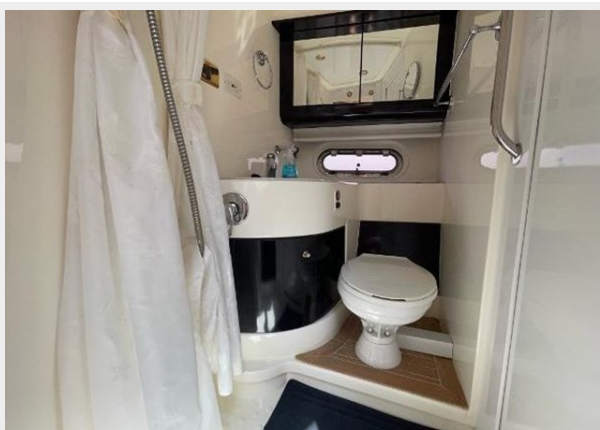
10



11



12



13



14



15



16



17



18



19



20



21



22



23



24



25



26



27



28



29



30



31



32



33



34



35



36



37



38



39



40



41



42



43



44



45



46



47



48



49



50



51



52



53



54



55



56



57



58



59



60



61



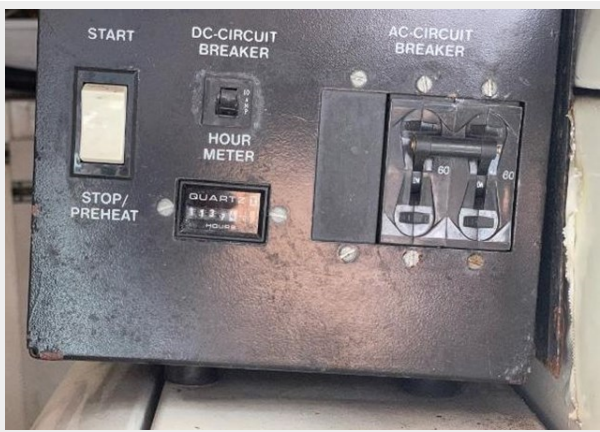
62



63



64



65



66



67



68



69



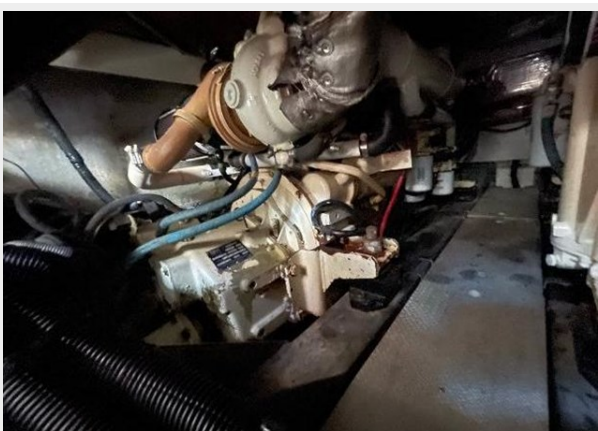
70



71



72



73



CONTACTS

Andrey Shestakov, leading yacht broker of the sales department of Shestakov Yacht Sales Inc. Shestakov Yacht Sales Inc., the official representative of the Miami/Fort Lauderdale FL headquarters.

Contact details

Email: andrey@shestakovyachtsales.com

Web: shestakovyachtsales.com/en/

Telephones

USA: +1(954)274-4435

Office hours

Monday – Saturday: **9:00 - 21:00** EDT

Sunday: **closed**

Address



Harbour Towne Marina, 850 NE 3rd St,
STE 213, Dania, FL 33004