

SETTLE DOWN — SEA RAY



Builder: [SEA RAY](#)

Year Built: 2023

Model: cruiser

Price: \$448,995 USD

Location: United States

LOA: 33' 1" (10.08mm)

Beam: 10.25

Min Draft: 0' 4" (0.1mm)

Max Draft: 3' 3" (0.96mm)

Cruise Speed: 30.41 Knots Kts. (35 MPH)

Max Speed: 52.14 Knots Kts. (60 MPH)

Our experienced yacht broker, Andrey Shestakov, will help you choose and buy a yacht that best suits your needs **Settle Down — SEA RAY** from our catalogue. Presently, at **Shestakov Yacht Sales Inc.**, we have a wide variety of yachts available on our sale's list. We also work in close contact with all the big **yacht manufacturers** from all over the world.

If you would like to buy a yacht **Settle Down — SEA RAY** or would like help answering any questions concerning purchasing, selling or chartering a yacht, please call **+1(954)274-4435**

TABLE OF CONTENTS

TABLE OF CONTENTS	2
SPECIFICATIONS	7
Overview	7
Basic Information	7
Dimensions	7
Speed, Capacities and Weight	7
Accommodations	7
Hull and Deck Information	8
Engine Information	8
PHOTOS	9
2	9
3	9
4	9
5	9
6	9
7	9
8	10
9	10
10	10
11	10
12	10
13	10
14	11
15	11
16	11
17	11
18	11
19	11

20	12
21	12
22	12
23	12
24	12
25	12
26	13
27	13
28	13
29	13
30	13
31	13
32	14
33	14
34	14
35	14
36	14
37	14
38	15
39	15
40	15
41	15
42	15
43	15
44	16
45	16
46	16
47	16
48	16

49	16
50	17
51	17
52	17
53	17
54	17
55	17
56	18
57	18
58	18
59	18
60	18
61	18
62	19
63	19
64	19
65	19
66	19
67	19
68	20
69	20
70	20
71	20
72	20
73	20
74	21
75	21
76	21
77	21

78	21
79	21
80	22
81	22
82	22
83	22
84	22
85	22
86	23
87	23
88	23
89	23
90	23
91	23
92	24
93	24
94	24
95	24
96	24
97	24
98	25
99	25
100	25
101	25
102	25
103	25
104	26
105	26
106	26

107	26
108	26
109	26
110	27
CONTACTS	28
Contact details	28
Telephones	28
Office hours	28
Address	28

SPECIFICATIONS

Overview

LIKE NEW 2023 Sea Ray 310 SLX with twin Mercury 300's with less than 25 hours and transferable warranty until 06/28. The boats been stored covered indoors high and dry, still has the "new boat smell" and is in PERFECT condition! If you're typically a new boat buyer and want to save a little on depreciation, this is the boat for you; the seller has decided they'd like to go with something a bit larger with a cabin.

Basic Information

Category: cruiser

Sub Category: Express

Model Year: 2023

Year Built: 2023

Country: United States

Dimensions

LOA: 33' 1" (10.08mm)

Beam: 10.25

Min Draft: 0' 4" (0.1mm)

Max Draft: 3' 3" (0.96mm)

Speed, Capacities and Weight

Cruise Speed: 30.41 Knots Kts. (35 MPH)

Max Speed: 52.14 Knots Kts. (60 MPH)

Water Capacity: 24 Gallons

Holding Tank: 20 Gal Gallons

Fuel Capacity: 158 Gal Gallons

Accommodations

Total Heads: 1

Hull and Deck Information

Hull Material: Fiberglass

Engine Information

Engines: 2

Manufacturer: Mercury

Engine Type: Outboard

Fuel Type: Gas

PHOTOS

2



3



4



5



6



7



8



9



10



11



12



13



14



15



16



17



18



19



20



21



22



23



24



25



26



27



28



29



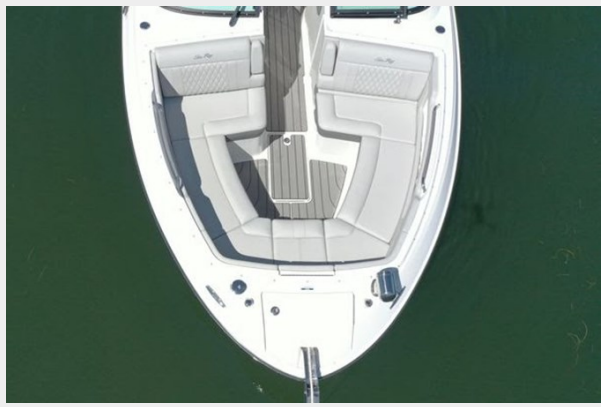
30



31



32



33



34



35



36



37



38



39



40



41



42



43



44



45



46



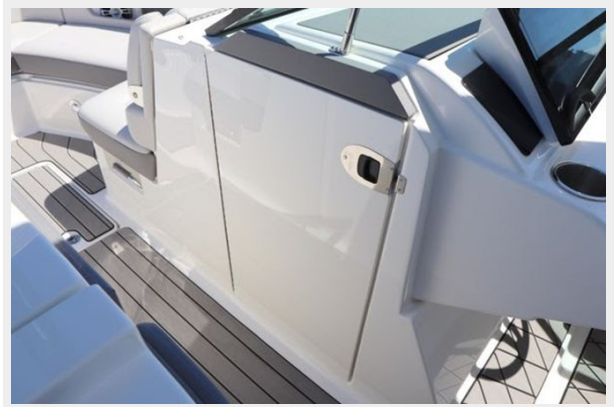
47



48



49



50



51



52



53



54



55



56



57



58



59



60



61



62



63



64



65



66



67



68



69



70



71



72



73



74



75



76



77



78



79



80



81



82



83



84



85



86



87



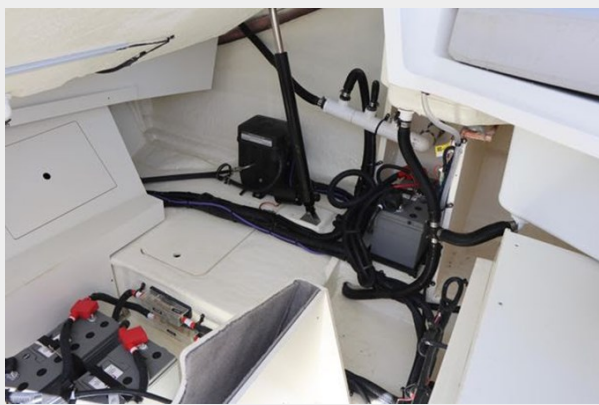
88



89



90



91



92



93



94



95



96



97



98



99



100



101



102



103



104



105



106



107



108



109



110



CONTACTS

Andrey Shestakov, leading yacht broker of the sales department of Shestakov Yacht Sales Inc. Shestakov Yacht Sales Inc., the official representative of the Miami/Fort Lauderdale FL headquarters.

Contact details

Email: **andrey@shestakovyachtsales.com**

Web: shestakovyachtsales.com/en/

Telephones

USA: **+1(954)274-4435**

Office hours

Monday – Saturday: **9:00 - 21:00** EDT

Sunday: **closed**

Address



Harbour Towne Marina, 850 NE 3rd St, STE 213, Dania, FL 33004