

MINE SET — MANGUSTA



Builder: MANGUSTA

Year Built: 2016

Model: Motor Yacht

Price: \$5,750,000 USD

Location: United States

LOA: 94' 3" (28.73mm)

Beam: 21.75

Max Draft: 5' 4" (1.63mm)

Cruise Speed: 20 Knots Kts. (23 MPH)

Max Speed: 30 Knots Kts. (35 MPH)

Our experienced yacht broker, Andrey Shestakov, will help you choose and buy a yacht that best suits your needs **MINE SET — MANGUSTA** from our catalogue. Presently, at Shestakov Yacht Sales Inc., we have a wide variety of yachts available on our sale's list. We also work in close contact with all the big yacht manufacturers from all over the world.

If you would like to buy a yacht **MINE SET — MANGUSTA** or would like help answering any questions concerning purchasing, selling or chartering a yacht, please call **+1(954)274-4435**

TABLE OF CONTENTS

TABLE OF CONTENTS	2
SPECIFICATIONS	3
Overview	3
Basic Information	3
Dimensions	3
Speed, Capacities and Weight	3
Accommodations	4
Hull and Deck Information	4
Engine Information	4
PHOTOS	5
CONTACTS	12
Contact details	12
Telephones	12
Office hours	12
Address	12

SPECIFICATIONS

Overview

MINE SET is the finest example of a 94' Mangusta on the market today. Featuring the performance and style of Mangusta, MINE SET is spacious with a custom interior staircase leaving the aft deck free for entertaining. Italian furnishings decorate the main salon and a sliding sunroof, paired with the expansive aft deck lounge area, creates a wide open indoor / outdoor environment.

The master stateroom, VIP suite and twin cabin accommodate 6 guests, and all staterooms offer ensuite heads. The extended swim platform and bow seating with double sunpads make swimming accessible and sunbathing comfortable. MINE SET is powered by twin MTU 16V-2000 M92L engines and reaches a top speed of 30 knots.

Basic Information

Category: Motor Yacht

Model Year: 2016

Year Built: 2016

Country: United States

Dimensions

LOA: 94' 3" (28.73mm)

Beam: 21.75

Max Draft: 5' 4" (1.63mm)

Speed, Capacities and Weight

Cruise Speed: 20 Knots Kts. (23 MPH)

Max Speed: 30 Knots Kts. (35 MPH)

Gross Tonnage: 135 Pounds

Water Capacity: 1396 Gallons

Fuel Capacity: 9296 Gal Gallons

Accommodations

Total Cabins: 3

Sleeps: 6

Hull and Deck Information

Hull Material: Fiberglass

Deck Material: Teak

Hull Designer: Overmarine Group

Exterior Designer: Overmarine Group

Interior Designer: Overmarine Group

Engine Information

Engines: 2

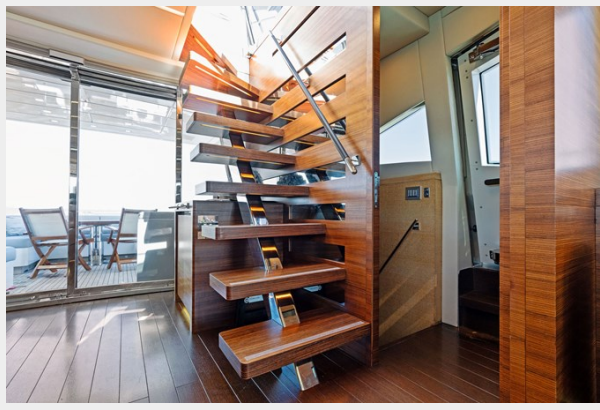
Manufacturer: MTU

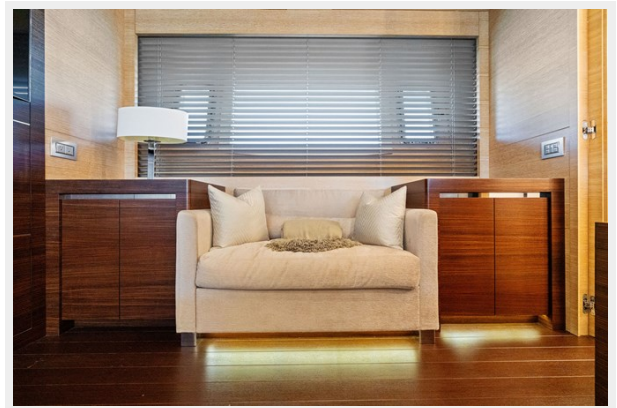
Engine Type: Inboard

Fuel Type: Diesel

PHOTOS

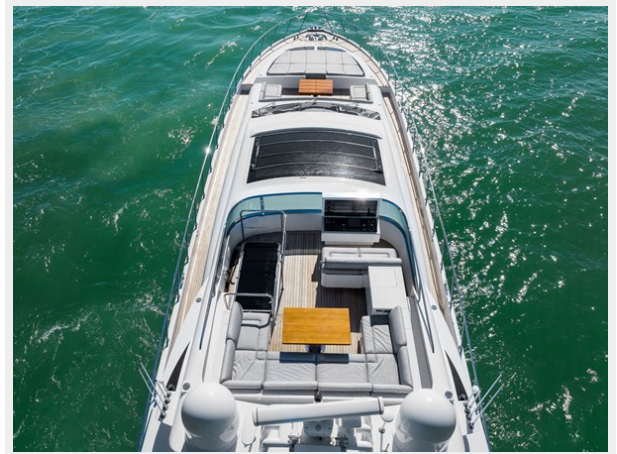


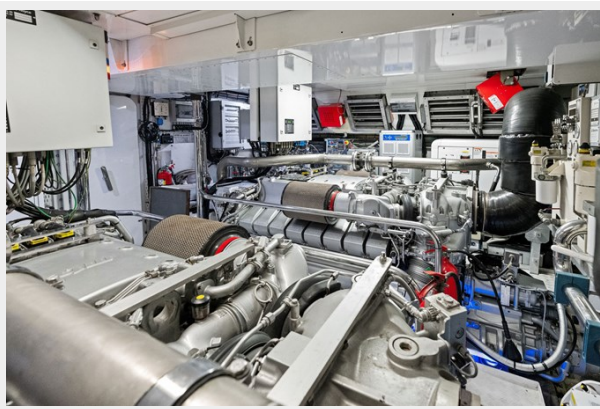












CONTACTS

Andrey Shestakov, leading yacht broker of the sales department of Shestakov Yacht Sales Inc. Shestakov Yacht Sales Inc., the official representative of the Miami/Fort Lauderdale FL headquarters.

Contact details

Email: andrey@shestakovyachtsales.com

Web: shestakovyachtsales.com/en/

Telephones

USA: +1(954)274-4435

Office hours

Monday – Saturday: **9:00 - 21:00** EDT

Sunday: **closed**

Address



Harbour Towne Marina, 850 NE 3rd St,
STE 213, Dania, FL 33004