

## 1976 PACIFIC TRAWLER — PACIFIC TRAWLERS



**Builder:** PACIFIC TRAWLERS

**Year Built:** 1976

**Model:** trawler

**Price:** PRICE ON APPLICATION

**Location:** Mexico

**LOA:** 37' (11.28mm)

**Beam:** 13

**Max Draft:** 4' 6" (1.37mm)

Our experienced yacht broker, Andrey Shestakov, will help you choose and buy a yacht that best suits your needs 1976 Pacific Trawler — PACIFIC TRAWLERS from our catalogue. Presently, at Shestakov Yacht Sales Inc., we have a wide variety of yachts available on our sale's list. We also work in close contact with all the big yacht manufacturers from all over the world.

If you would like to buy a yacht 1976 Pacific Trawler — PACIFIC TRAWLERS or would like help answering any questions concerning purchasing, selling or chartering a yacht, please call +1(954)274-4435

---

# TABLE OF CONTENTS

---

TABLE OF CONTENTS	2
SPECIFICATIONS	3
Overview	3
Basic Information	3
Dimensions	3
Speed, Capacities and Weight	4
Accommodations	4
Hull and Deck Information	4
Engine Information	4
PHOTOS	5
CONTACTS	8
Contact details	8
Telephones	8
Office hours	8
Address	8

---

# SPECIFICATIONS

---

## Overview

---

Noted for their esteemed Trawlers and Cruisers, Pacific Trawler boats are known for their larger draft and narrow beam - features that earn them popularity and preference across various commercial and recreational boating affairs.

It's clear that she has been tenderly cared for and improved. The elegantly furnished salon is spacious, leading to a fully kitted out galley. Opposite the galley is a fridge/freezer lining the forward bulkhead guiding to the port restroom that houses a vanity, an electric macerator toilet, and a walk-in shower, all of which are entirely renovated.

Progressing through to the pilothouse, you are offered excellent visibility when in motion and sufficient seating for three. The forward stateroom is expansive and cozy, boasting a completely renovated restroom having granite and an additional electric toilet. The boat is equipped with an anchor chain with windlass, Garmin GPS, bow and aft thrusters, Comnav autopilot, a new wet muffler, a Xantrex inverter, Pro Sport Duel Bank 12V battery charger, Force 10 3 burner oven, an LPG stove, and replaced salon upholstery. There's also a custom salon granite tabletop and counter. Viewing is essential to fully appreciate its attractive features. You will not be left wanting.

The Boston Whaler is a 90HP Mercury outboard-powered 17' boat. It features a center console with a T-top, a generous ice box for your day trips, stainless steel rod holders, and many more upgrades.

---

## Basic Information

---

**Category:** trawler

**Model Year:** 1976

**Year Built:** 1976

**Country:** Mexico

---

## Dimensions

---

**LOA:** 37' (11.28mm)

**Beam:** 13

**Max Draft:** 4' 6" (1.37mm)

---

## Speed, Capacities and Weight

---

**Water Capacity:** 250 Gallons

**Fuel Capacity:** 540 Gal Gallons

---

## Accommodations

---

**Total Cabins:** 1

**Total Heads:** 1

---

## Hull and Deck Information

---

**Hull Material:** Fiberglass

---

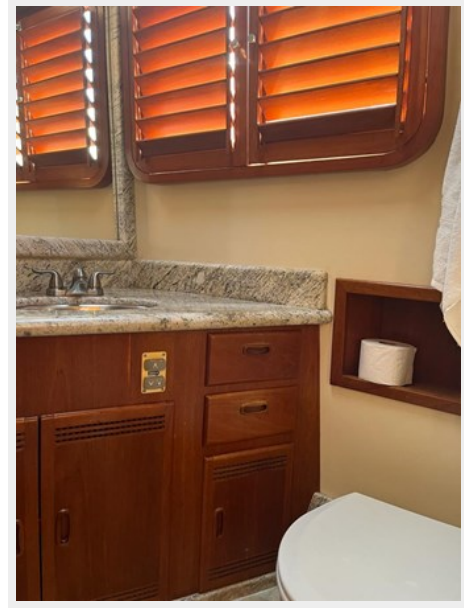
## Engine Information

---

**Engines:** 1

**Manufacturer:** Perkins

# PHOTOS







# CONTACTS

---

Andrey Shestakov, leading yacht broker of the sales department of Shestakov Yacht Sales Inc. Shestakov Yacht Sales Inc., the official representative of the Miami/Fort Lauderdale FL headquarters.

## Contact details

---

Email: [andrey@shestakovyachtsales.com](mailto:andrey@shestakovyachtsales.com)

Web: [shestakovyachtsales.com/en/](http://shestakovyachtsales.com/en/)

## Telephones

---

USA: +1(954)274-4435

## Office hours

---

Monday – Saturday: **9:00 - 21:00** EDT

Sunday: **closed**

## Address

---



Harbour Towne Marina, 850 NE 3rd St,  
STE 213, Dania, FL 33004