

MITCO 1 — THY



Builder: THY

Year Built: 2023

Model: Sport Yacht

Price: €680,000 EUR

Location: Turkey

LOA: 47' 11" (14.6mm)

Beam: 16.4

Min Draft: 2' 8" (0.8mm)

Max Draft: 2' 8" (0.8mm)

Our experienced yacht broker, Andrey Shestakov, will help you choose and buy a yacht that best suits your needs **Mitco 1 — THY** from our catalogue. Presently, at Shestakov Yacht Sales Inc., we have a wide variety of yachts available on our sale's list. We also work in close contact with all the big yacht manufacturers from all over the world.

If you would like to buy a yacht **Mitco 1 — THY** or would like help answering any questions concerning purchasing, selling or chartering a yacht, please call **+1(954)274-4435**

TABLE OF CONTENTS

TABLE OF CONTENTS	2
SPECIFICATIONS	4
Overview	4
Basic Information	4
Dimensions	4
Speed, Capacities and Weight	4
Accommodations	4
Hull and Deck Information	5
Engine Information	5
PHOTOS	6
1	6
2	6
3	6
4	6
5	6
6	6
7	7
8	7
9	7
10	7
11	7
12	7
13	7
14	7
15	8
16	8
17	8
18	8

19	8
29	8
21	8
22	8
23	9
24	9
25	9
CONTACTS	10
Contact details	10
Telephones	10
Office hours	10
Address	10

SPECIFICATIONS

Overview

The maxi-rib has an innovative and distinctive design, large outdoor spaces of the covered deck, a powerful hard-top and large areas of the below deck, finely furnished.

Brilliant performance of this maxi-rib equipped with an sterndrive engine consisting of 2 Volvo Penta engines of 440hp each that allows it to reach a maximum speed of 36 knots. The covered deck, with a large total area of sqm. 52, thanks also to its two mobile terraces, comfortably welcomes guests allowing this maxi-rib to be used also as a Party Boat.

Basic Information

Category: Sport Yacht

Model Year: 2023

Year Built: 2023

Country: Turkey

Dimensions

LOA: 47' 11" (14.6mm)

Beam: 16.4

Min Draft: 2' 8" (0.8mm)

Max Draft: 2' 8" (0.8mm)

Speed, Capacities and Weight

Water Capacity: 250 Gallons

Holding Tank: 15.85 Gal Gallons

Fuel Capacity: 369.84 Gal Gallons

Accommodations

Total Cabins: 1

Crew Heads: 1

Hull and Deck Information

Hull Material: Fiberglass

Deck Material: Teak

Hull Configuration: Monohull

Hull Designer: AWAVE Design

Interior Designer: AWAVE Design

Engine Information

Engines: 2

Manufacturer: Volvo Penta

Engine Type: Inboard

Fuel Type: Diesel

PHOTOS

1



2



3



4



5



6



7



8



9



10



11



12



13



14



15



16



17



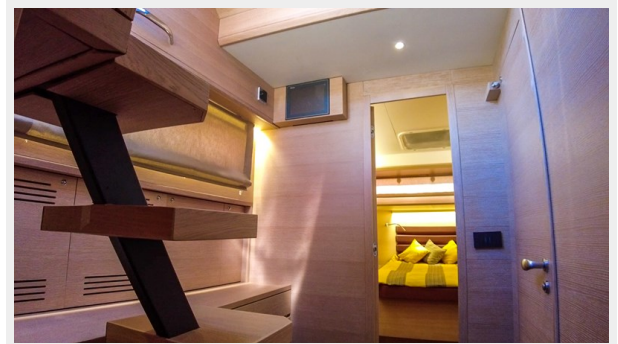
18



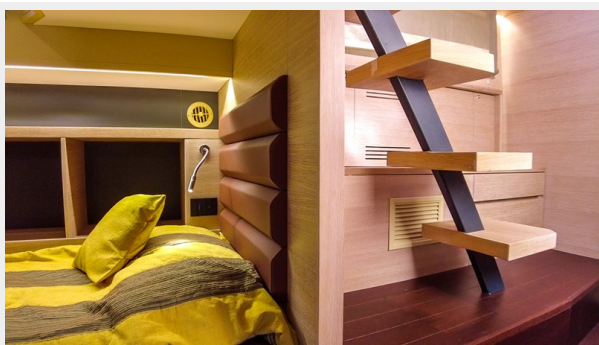
19



29



21



22



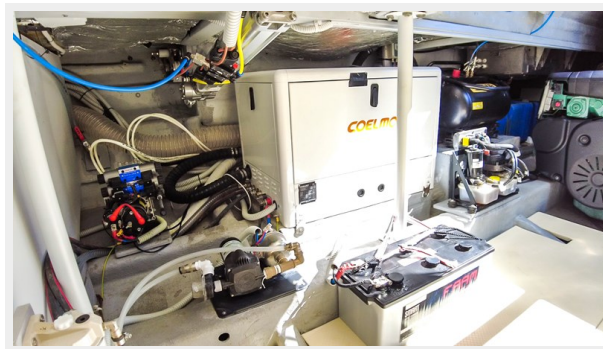
23



24



25



CONTACTS

Andrey Shestakov, leading yacht broker of the sales department of Shestakov Yacht Sales Inc. Shestakov Yacht Sales Inc., the official representative of the Miami/Fort Lauderdale FL headquarters.

Contact details

Email: andrey@shestakovyachtsales.com

Web: shestakovyachtsales.com/en/

Telephones

USA: +1(954)274-4435

Office hours

Monday – Saturday: **9:00 - 21:00** EDT

Sunday: **closed**

Address



Harbour Towne Marina, 850 NE 3rd St,
STE 213, Dania, FL 33004