

SLAINTE III — FERRETTI CUSTOM LINE



Builder: FERRETTI CUSTOM LINE

Year Built: 2013

Model: Displacement

Price: \$2,850,000 USD

Location: United States

LOA: 86' (26.21mm)

Beam: 22.91

Min Draft: 7' 4" (2.24mm)

Max Draft: 7' 6" (2.29mm)

Cruise Speed: 12.5 Knots Kts. (14 MPH)

Max Speed: 14 Knots Kts. (16 MPH)

Our experienced yacht broker, Andrey Shestakov, will help you choose and buy a yacht that best suits your needs **SLAINTE III — FERRETTI CUSTOM LINE** from our catalogue. Presently, at Shestakov Yacht Sales Inc., we have a wide variety of yachts available on our sale's list. We also work in close contact with all the big yacht manufacturers from all over the world.

If you would like to buy a yacht **SLAINTE III — FERRETTI CUSTOM LINE** or would like help answering any questions concerning purchasing, selling or chartering a yacht, please call **+1(954)274-4435**

TABLE OF CONTENTS

TABLE OF CONTENTS	2
SPECIFICATIONS	5
Overview	5
Basic Information	5
Dimensions	5
Speed, Capacities and Weight	5
Accommodations	6
Hull and Deck Information	6
Engine Information	6
PHOTOS	7
Bow	7
Profile	7
Salon Aft	7
Salon	7
Dinning Table	8
TV	8
Aft Deck	8
Main Aft Deck	8
Main Deck Master Stateroom	8
Main Deck Master Stateroom - TV	8
Master Ensuite	9
Guest Stateroom - Port	9
Guest Ensuite	9
Guest Stateroom - Stbd.	9
Twin Stateroom with pullman - Port	9
Twin Stateroom with pullman - Stbd	9
Stairway to main deck	10
Twin Ensuite	10

Stair to Skylounge	10
Skylounge	10
Pilothouse and Lounge deck	10
Helm	10
Bridge Helm	11
Bridge Aft Deck	11
Bridge Aft Deck	11
Tender Custom Chaulks	11
Flybridge Seating	11
Flybridge Sunbed	11
Bridge Walkarounds	12
Davit and Stairs to main deck	12
Walkaround Decks	12
Bow Sunpad and Bridge Walkaround	12
Bow Seating	13
Bow Umbrella	13
Bow Umbrella	13
Galley	13
Galley	13
Galley and Crew Entrance	13
Crew quarters	14
Custom Cabinetry in Lazzarette	14
Utility Room	14
Electrical Panel	14
Engineroom 1	14
Engineroom	14
Beach Platform	15
Stern	15
Tender - Excluded from the sale	15

Profile	15
Aerial profile	15
CONTACTS	16
Contact details	16
Telephones	16
Office hours	16
Address	16

SPECIFICATIONS

Overview

SLAINTE III is the cleanest and closest to near-perfect 26m Navetta anywhere in the world. A full-time crew of 3 and a non-budget type of owner has kept her in this condition since it was purchased. SLAINTE III has been updated and serviced better than any boat out there.

A must-see vessel loaded with options such as gyro and stabilizers, full electronic package, AC converter for 50 or 60 cycles, VS spec.

Basic Information

Category: Displacement

Sub Category: Displacement

Model Year: 2013

Year Built: 2013

Country: United States

Dimensions

LOA: 86' (26.21mm)

Beam: 22.91

Min Draft: 7' 4" (2.24mm)

Max Draft: 7' 6" (2.29mm)

Speed, Capacities and Weight

Cruise Speed: 12.5 Knots Kts. (14 MPH)

Max Speed: 14 Knots Kts. (16 MPH)

Gross Tonnage: 123 Pounds

Water Capacity: 528 Gallons

Fuel Capacity: 3276 Gal Gallons

Accommodations

Total Cabins: 5

Sleeps: 12

Total Heads: 8

Crew Cabin: 4

Crew Berths: 4

Hull and Deck Information

Hull Material: Fiberglass

Hull Configuration: Full Displacement

Hull Designer: Ferretti Engineering
Department (Italy)

Exterior Designer: Zuccon International
Project

Interior Designer: Zuccon International
Project

Engine Information

Engines: 2

Manufacturer: MAN

Engine Type: Inboard

Fuel Type: Diesel

PHOTOS

Profile



Bow



Salon



Salon Aft



Dinning Table



TV



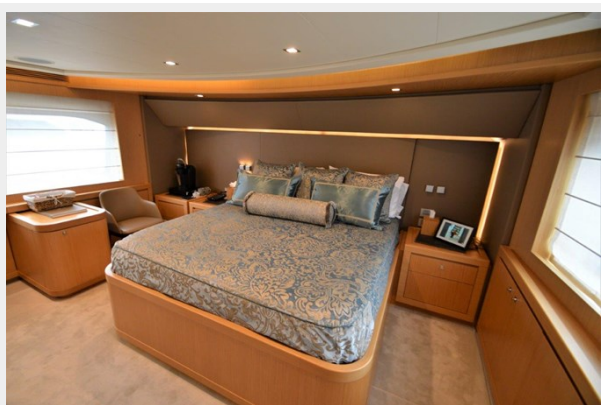
Aft Deck



Main Aft Deck



Main Deck Master Stateroom



Main Deck Master Stateroom - TV



Master Ensuite



Guest Stateroom - Port



Guest Ensuite



Guest Stateroom - Stbd.



Twin Stateroom with pullman - Stbd



Twin Stateroom with pullman - Port



Twin Ensuite



Stairway to main deck



Stair to Skylounge



Skylounge



Pilothouse and Lounge deck



Helm



Bridge Helm



Bridge Aft Deck



Bridge Aft Deck



Tender Custom Chaulks



Flybridge Sunbed



Flybridge Seating



Bridge Walkarounds



Davit and Stairs to main deck



Walkaround Decks



Bow Sunpad and Bridge Walkaround



Bow Umbrella



Bow Seating



Bow Umbrella



Galley



Galley



Galley and Crew Entrance



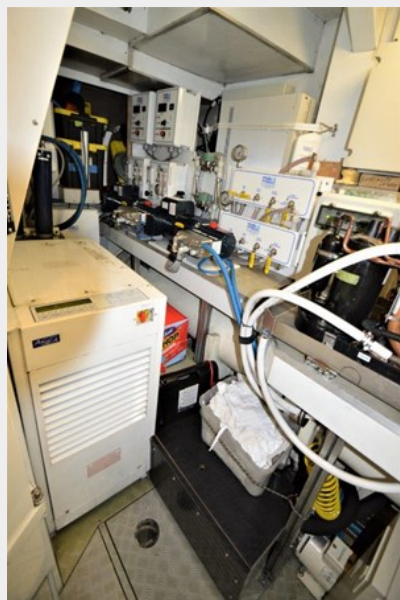
Crew quarters



Custom Cabinetry in Lazzaretto



Utility Room



Electrical Panel



Engine room 1



Engine room



Stern



Beach Platform



Tender - Excluded from the sale



Profile



Aerial profile



CONTACTS

Andrey Shestakov, leading yacht broker of the sales department of Shestakov Yacht Sales Inc. Shestakov Yacht Sales Inc., the official representative of the Miami/Fort Lauderdale FL headquarters.

Contact details

Email: andrey@shestakovyachtsales.com

Web: shestakovyachtsales.com/en/

Telephones

USA: +1(954)274-4435

Office hours

Monday – Saturday: **9:00 - 21:00** EDT

Sunday: **closed**

Address



Harbour Towne Marina, 850 NE 3rd St,
STE 213, Dania, FL 33004