

LIGHTEN UP — ALBEMARLE



Builder: ALBEMARLE

Year Built: 2003

Model: walkaround

Price: \$44,900 USD

Location: United States

LOA: 25' 10" (7.87mm)

Beam: 8.5

Max Draft: 2' 10" (0.86mm)

Our experienced yacht broker, Andrey Shestakov, will help you choose and buy a yacht that best suits your needs **LIGHTEN UP — ALBEMARLE** from our catalogue. Presently, at Shestakov Yacht Sales Inc., we have a wide variety of yachts available on our sale's list. We also work in close contact with all the big yacht manufacturers from all over the world.

If you would like to buy a yacht **LIGHTEN UP — ALBEMARLE** or would like help answering any questions concerning purchasing, selling or chartering a yacht, please call **+1(954)274-4435**

TABLE OF CONTENTS

TABLE OF CONTENTS	2
SPECIFICATIONS	5
Overview	5
Basic Information	5
Dimensions	5
Speed, Capacities and Weight	5
Accommodations	6
Hull and Deck Information	6
Engine Information	6
PHOTOS	7
2	7
3	7
4	7
5	7
6	7
7	7
8	8
9	8
10	8
11	8
12	9
13	9
14	9
15	9
16	9
17	9
18	10
19	10

20	10
21	10
22	10
23	10
25	11
24	11
26	11
27	11
28	11
29	11
31	12
30	12
32	12
33	12
34	13
35	13
37	13
36	13
38	14
39	14
41	14
40	14
42	15
43	15
44	15
45	15
46	15
47	15
48	16

49	16
50	16
51	16
53	16
52	16
CONTACTS	17
Contact details	17
Telephones	17
Office hours	17
Address	17

SPECIFICATIONS

Overview

Long regarded as one of the most offshore-capable boats in her class, the tailorable Albemarle 268 is best known for its jackshaft power system and exceptional head-sea performance. Construction and finish are above average throughout.

Standard Features include, bait boxes, tackle locker, removable fish box and a Functional cabin with a convertible V-berth/dinette, galley and enclosed head and with her optional microwave and refrigerator the 268 becomes an unbeatable overnigher.. The center engine location keeps the cockpit free of the engine box common to most sterndrive boats.

Powered by a Merc 8.1L 370hp engine with Bravo 3 outdrive w/counter rotating SS props. Manifold, Elbow and Bellows replace in 2021T

his boat has been well maintained and it shows. In the water and ready to take you on your next adventure.

Thank you for your time and consideration.

Basic Information

Category: walkaround

Sub Category: Walk-around

Model Year: 2003

Year Built: 2003

Country: United States

Dimensions

LOA: 25' 10" (7.87mm)

Beam: 8.5

Max Draft: 2' 10" (0.86mm)

Speed, Capacities and Weight

Water Capacity: 14 Gallons

Fuel Capacity: 172 Gal Gallons

Accommodations

Total Cabins: 1

Total Berths: 2

Total Heads: 1

Hull and Deck Information

Hull Material: Fiberglass

Hull Configuration: Deep Vee

Engine Information

Engines: 1

Manufacturer: Mercruiser

Engine Type: I/O

Fuel Type: Gas

PHOTOS

2



3



4



5



6



7



8



9



10



11



12



13



14



15



16



17



18



19



20



21



22



23



24



25



26



27



28



29



30



31



32



33



34



35



36



37



38



39



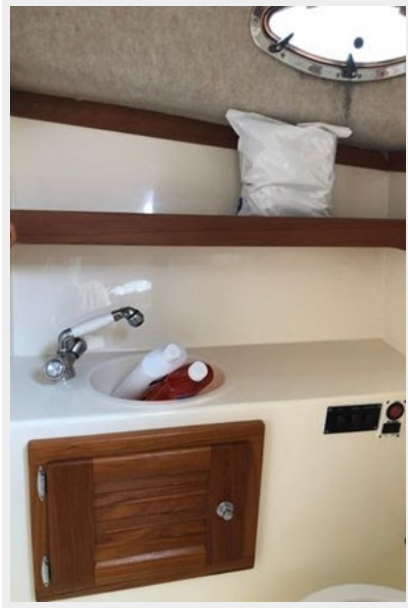
41



40



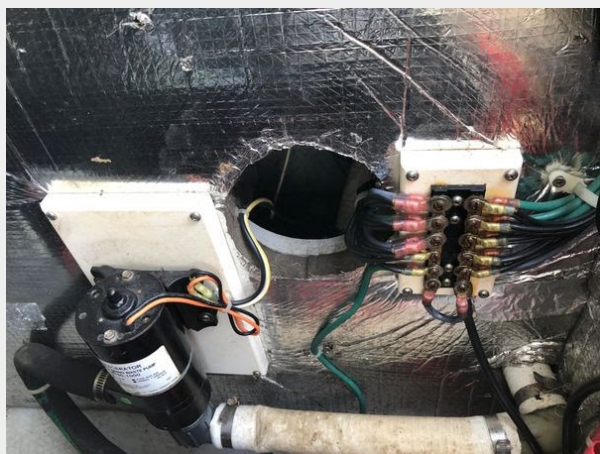
42



43



44



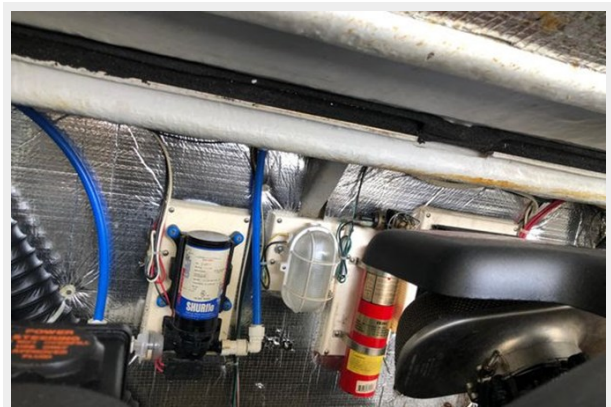
45



46



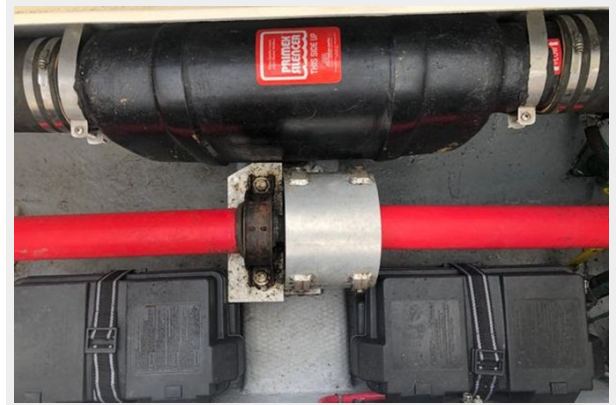
47



48



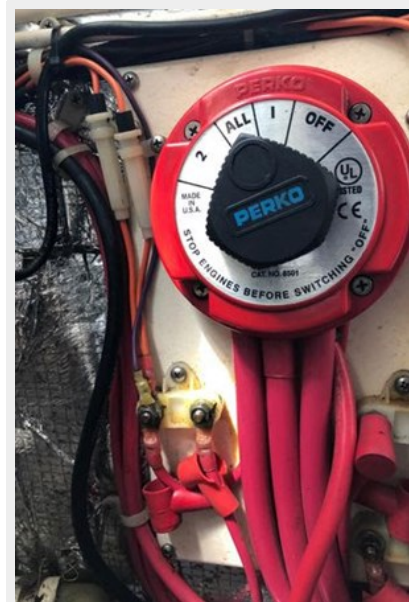
49



50



51



52



53



CONTACTS

Andrey Shestakov, leading yacht broker of the sales department of Shestakov Yacht Sales Inc. Shestakov Yacht Sales Inc., the official representative of the Miami/Fort Lauderdale FL headquarters.

Contact details

Email: andrey@shestakovyachtsales.com

Web: shestakovyachtsales.com/en/

Telephones

USA: +1(954)274-4435

Office hours

Monday – Saturday: **9:00 - 21:00** EDT

Sunday: **closed**

Address



Harbour Towne Marina, 850 NE 3rd St,
STE 213, Dania, FL 33004