

WOOSAA — TIARA



Builder: TIARA

Year Built: 1997

Model: Sport Fisherman

Price: \$59,900 USD

Location: United States

LOA: 33' 10" (10.31mm)

Beam: 12

Max Draft: 3' (0.91mm)

Our experienced yacht broker, Andrey Shestakov, will help you choose and buy a yacht that best suits your needs **WOOSAA — TIARA** from our catalogue. Presently, at Shestakov Yacht Sales Inc., we have a wide variety of yachts available on our sale's list. We also work in close contact with all the big yacht manufacturers from all over the world.

If you would like to buy a yacht **WOOSAA — TIARA** or would like help answering any questions concerning purchasing, selling or chartering a yacht, please call **+1(954)274-4435**

TABLE OF CONTENTS

TABLE OF CONTENTS	2
SPECIFICATIONS	4
Overview	4
Basic Information	4
Dimensions	4
Speed, Capacities and Weight	4
Accommodations	5
Hull and Deck Information	5
Engine Information	5
PHOTOS	6
2	6
3	6
4	6
5	6
6	6
7	6
8	7
9	7
11	7
10	7
12	7
13	7
14	8
15	8
16	8
17	8
18	8
19	8

20	9
21	9
23	9
22	9
24	10
25	10
26	10
27	10
28	11
29	11
30	11
31	11
32	12
33	12
35	12
34	12
37	13
36	13
38	13
39	13
40	14
41	14
42	14
CONTACTS	15
Contact details	15
Telephones	15
Office hours	15
Address	15

SPECIFICATIONS

Overview

Introduced in 1992, the Tiara 3100 Open is a complete update of the original 3100 Open built from 1979–91. Her reworked hull features a sharper entry, additional transom dead-rise (18 degrees) drier ride, and prop pockets to reduce shaft angles. Significantly, the 3100 Open also has a bi-level cockpit layout making an enlarged engine compartment.

Tiara has always been a conservative builder and it's no surprise that the new 3100 looks a lot like the original—basically a no-glitz express with top-quality systems, and hardware. The slightly enlarged interior of the new 3100 has a bit more headroom than her predecessor, and there's also a bigger U-shaped dinette. Additional updates included increased fuel, a tilt-away helm console, recessed trim tabs, and an in-deck fish box and live-well in the cockpit. There is also transom door which became standard in 1994. "WOOSAA" is equipped with SIMRAD Radar/GPS/ Electric Windless and twin Crusader 455 - 350hp gas engines which allow for cruising speeds around at 20–21 knots. "WOOSAA" is nice example of this very popular model and worth your consideration.

Basic Information

Category: Sport Fisherman

Model Year: 1997

Year Built: 1997

Country: United States

Dimensions

LOA: 33' 10" (10.31mm)

LOD: 31' 6" (9.6mm)

Beam: 12

Max Draft: 3' (0.91mm)

Speed, Capacities and Weight

Water Capacity: 38 Gallons

Holding Tank: 20 Gal Gallons

Fuel Capacity: 246 Gal Gallons

Accommodations

Total Cabins: 1

Total Berths: 2

Total Heads: 1

Hull and Deck Information

Hull Material: Fiberglass

Hull Configuration: Modified Deep Vee

Engine Information

Engines: 2

Manufacturer: Crusader

Engine Type: Inboard

Fuel Type: Gas

PHOTOS

2



3



4



5



6



7



8



9



10



11



12



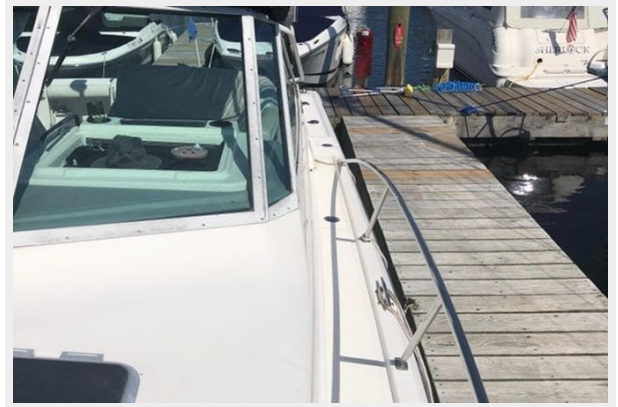
13



14



15



16



17



18



19



20



21



23



22



24



25



26



27



28



29



30



31



32



33



34



35



36



37



38



39



40



41



42



CONTACTS

Andrey Shestakov, leading yacht broker of the sales department of Shestakov Yacht Sales Inc. Shestakov Yacht Sales Inc., the official representative of the Miami/Fort Lauderdale FL headquarters.

Contact details

Email: andrey@shestakovyachtsales.com

Web: shestakovyachtsales.com/en/

Telephones

USA: +1(954)274-4435

Office hours

Monday – Saturday: **9:00 - 21:00** EDT

Sunday: **closed**

Address



Harbour Towne Marina, 850 NE 3rd St,
STE 213, Dania, FL 33004