

1988 C&C AC41 — C & C YACHTS



Builder: C & C YACHTS

Year Built: 1988

Model: Cruising or Racing Sailboat

Price: \$54,900 USD

Location: United States

LOA: 40' 9" (12.42mm)

Beam: 12.91

Max Draft: 7' 10" (2.39mm)

Cruise Speed: 6.9 Knots Kts. (8 MPH)

Our experienced yacht broker, Andrey Shestakov, will help you choose and buy a yacht that best suits your needs 1988 C&C AC41 — C & C YACHTS from our catalogue. Presently, at Shestakov Yacht Sales Inc., we have a wide variety of yachts available on our sale's list. We also work in close contact with all the big yacht manufacturers from all over the world.

If you would like to buy a yacht 1988 C&C AC41 — C & C YACHTS or would like help answering any questions concerning purchasing, selling or chartering a yacht, please call +1(954)274-4435

TABLE OF CONTENTS

TABLE OF CONTENTS	2
SPECIFICATIONS	5
Overview	5
Basic Information	5
Dimensions	5
Speed, Capacities and Weight	5
Accommodations	5
Hull and Deck Information	6
Engine Information	6
PHOTOS	7
2	7
3	7
4	7
5	7
6	7
7	7
9	8
8	8
11	8
10	8
12	9
13	9
14	9
15	9
16	9
17	9
18	10
19	10

20	10
21	10
22	10
23	10
24	11
25	11
27	11
26	11
28	12
29	12
30	12
31	12
32	13
33	13
34	13
35	13
36	13
37	13
38	14
39	14
40	14
41	14
43	14
42	14
44	15
45	15
46	15
47	15
48	15

49	15
51	16
50	16
52	16
53	16
55	16
54	16
CONTACTS	17
Contact details	17
Telephones	17
Office hours	17
Address	17

SPECIFICATIONS

Overview

One of C&C's most successful designs the late model C&C 41 brings high-performance characteristics with her proven race-winning hull design and the luxury of an impressive aft cabin. This second owner 41, This 41, has been well maintained and continually upgraded. She has newer electronics ('15), new interior cushion/fabric ('15) new dodger & bimini ('15). This is a very nice boat and only on the market as the owner wants to go to the dark side. NOTE: This C&C 41 has never been raced by her first or second owner! For full details please see the full specs. Thank you for your time and consideration.

Basic Information

Category: Cruising or Racing Sailboat

Model Year: 1988

Year Built: 1988

Country: United States

Dimensions

LOA: 40' 9" (12.42mm)

LWL: 33' 4" (10.16mm)

Beam: 12.91

Max Draft: 7' 10" (2.39mm)

Speed, Capacities and Weight

Cruise Speed: 6.9 Knots Kts. (8 MPH)

Water Capacity: 60 Gallons

Holding Tank: 24 Gal Gallons

Fuel Capacity: 20 Gal Gallons

Accommodations

Total Cabins: 3

Total Berths: 5

Total Heads: 1

Hull and Deck Information

Hull Material: Fiberglass

Engine Information

Engines: 1

Manufacturer: Yanmar

Engine Type: Inboard

Fuel Type: Diesel

PHOTOS

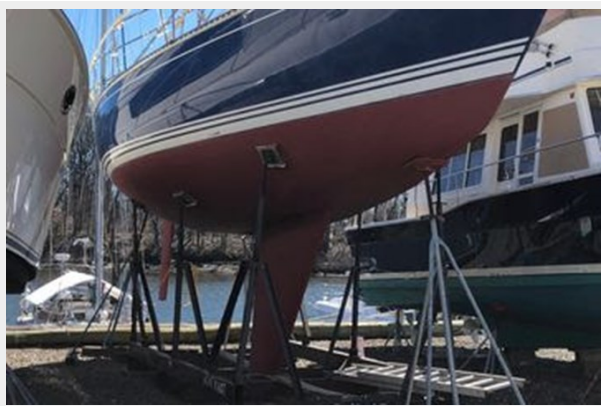
2



3



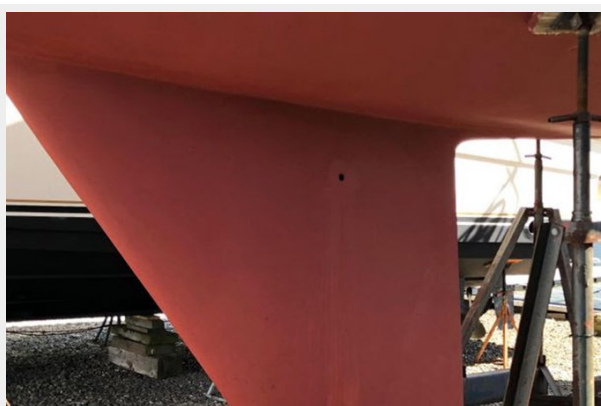
4



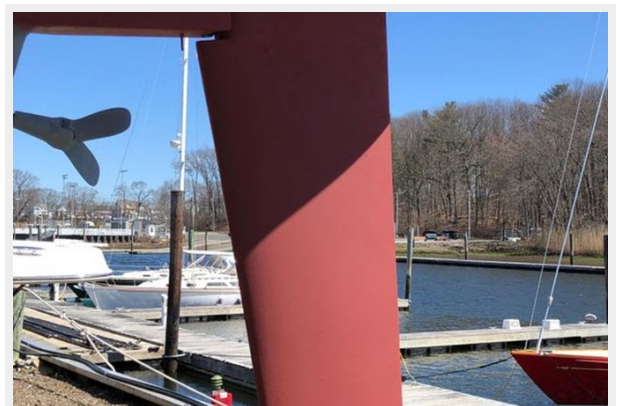
5



6



7



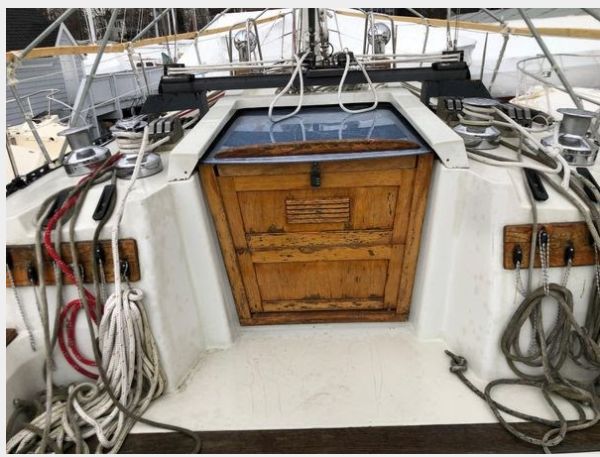
8



9



10



11



12



13



14



15



16



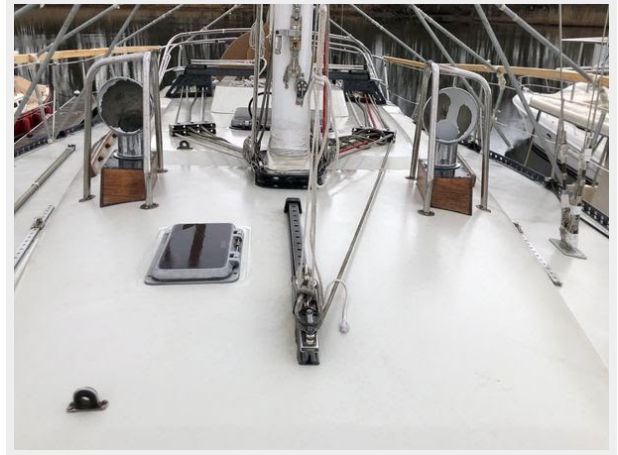
17



18



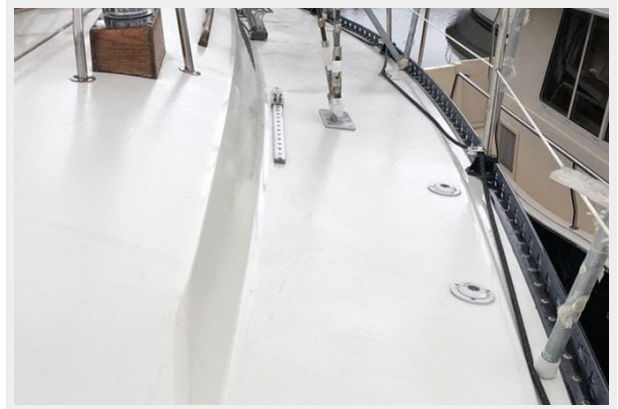
19



20



21



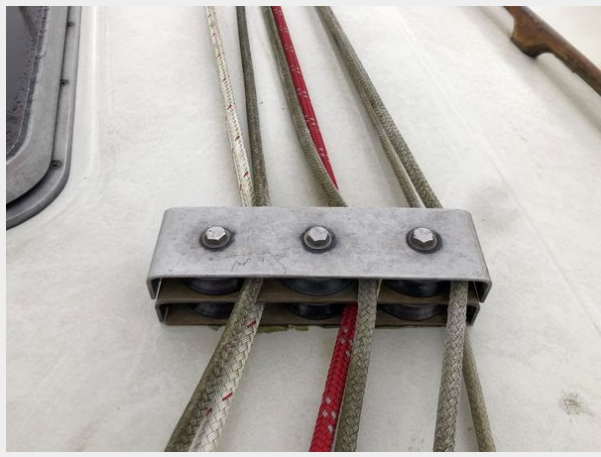
22



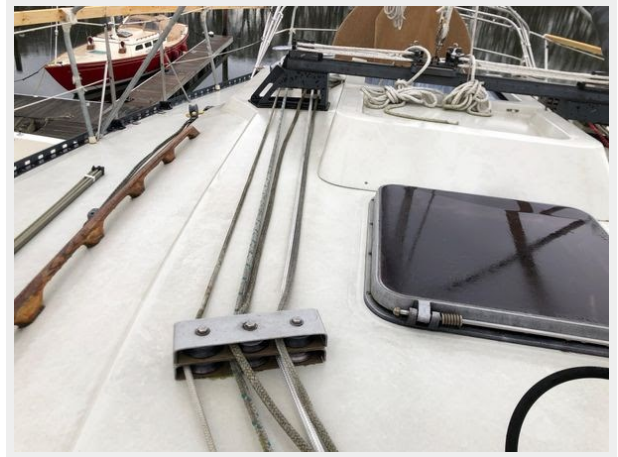
23



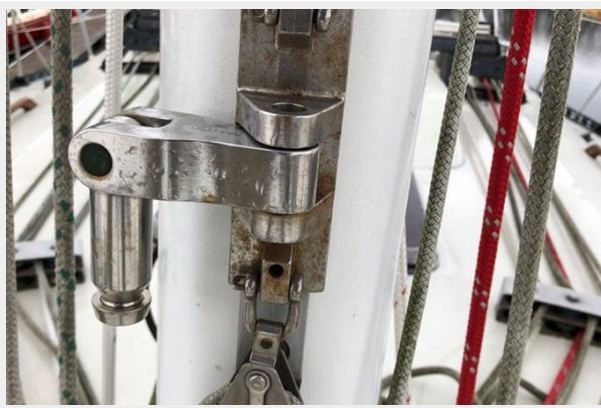
24



25



26



27



28



29



30



31



32



33



34



35



36



37



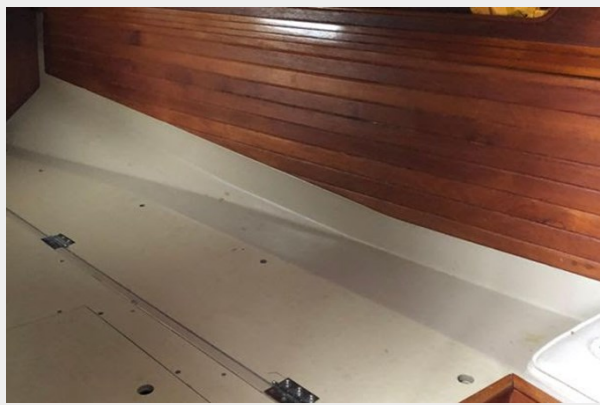
38



39



40



41



42



43



44



45



46



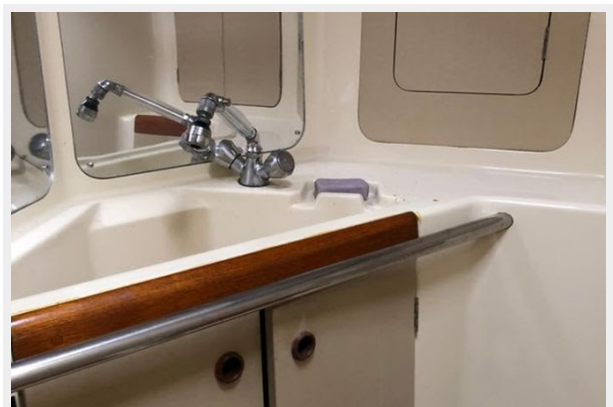
47



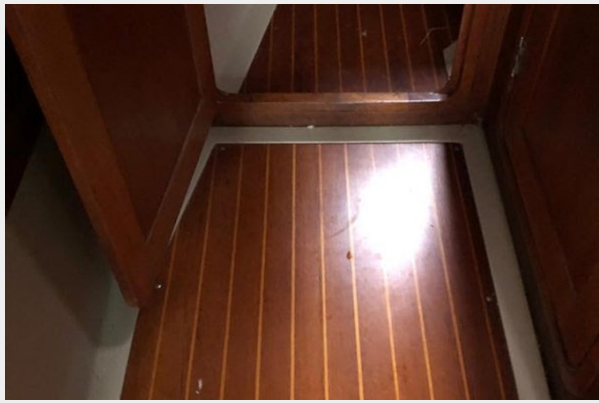
48



49



50



51



52



53



54



55



CONTACTS

Andrey Shestakov, leading yacht broker of the sales department of Shestakov Yacht Sales Inc. Shestakov Yacht Sales Inc., the official representative of the Miami/Fort Lauderdale FL headquarters.

Contact details

Email: andrey@shestakovyachtsales.com

Web: shestakovyachtsales.com/en/

Telephones

USA: +1(954)274-4435

Office hours

Monday – Saturday: **9:00 - 21:00** EDT

Sunday: **closed**

Address



Harbour Towne Marina, 850 NE 3rd St,
STE 213, Dania, FL 33004