

# 1988 ALBEMARLE 27 EXPRESS FISHERMAN — ALBEMARLE



**Builder:** ALBEMARLE

**LOA:** 27' (8.23m)

**Year Built:** 1988

**Beam:** 10.5

**Model:** walkaround

**Price:** \$28,900 USD

**Location:** United States

Our experienced yacht broker, Andrey Shestakov, will help you choose and buy a yacht that best suits your needs 1988 Albemarle 27 express fisherman — ALBEMARLE from our catalogue. Presently, at Shestakov Yacht Sales Inc., we have a wide variety of yachts available on our sale's list. We also work in close contact with all the big yacht manufacturers from all over the world.

If you would like to buy a yacht 1988 Albemarle 27 express fisherman — ALBEMARLE or would like help answering any questions concerning purchasing, selling or chartering a yacht, please call +1(954)274-4435

# TABLE OF CONTENTS

TABLE OF CONTENTS	2
SPECIFICATIONS	4
Overview	4
Basic Information	4
Dimensions	4
Speed, Capacities and Weight	4
Accommodations	4
Hull and Deck Information	4
Engine Information	5
PHOTOS	6
2	6
3	6
4	6
5	6
6	6
7	6
8	7
9	7
10	7
11	7
12	7
13	7
14	8
15	8
17	8
16	8
18	9
19	9

20	9
21	9
22	10
23	10
24	10
25	10
26	11
27	11
29	11
28	11
30	11
31	11
32	12
33	12
34	12
35	12
36	12
37	12
38	13
39	13
40	13
41	13
42	13
CONTACTS	14
Contact details	14
Telephones	14
Office hours	14
Address	14

---

# SPECIFICATIONS

---

## Overview

---

Huge Cockpit, ready to fish or cruise. Nauti-teak decks, new isen glass. Hard Top, Custom swim platform. Both engines rebuilt in last three years, 30hrs and 8 hrs. Inboard engines with fixed props (not outdrive boat) New Depth Finder

## Basic Information

---

**Category:** walkaround

**Sub Category:** Walk-around

**Model Year:** 1988

**Year Built:** 1988

**Country:** United States

## Dimensions

---

**LOA:** 27' (8.23m)

**Beam:** 10.5

## Speed, Capacities and Weight

---

**Holding Tank:** 10 Gal Gallons

## Accommodations

---

**Total Cabins:** 1

**Total Heads:** 1

## Hull and Deck Information

---

**Hull Material:** Fiberglass

---

## Engine Information

---

**Engines:** 2

**Manufacturer:** Volvo Penta

**Fuel Type:** Gas

# PHOTOS

2



3



4



5



6



7





8



9



10



11



12



13



14



15



16



17





18



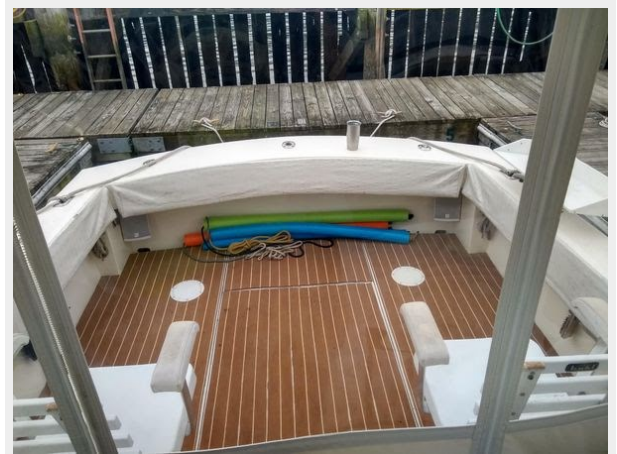
19



20



21



22



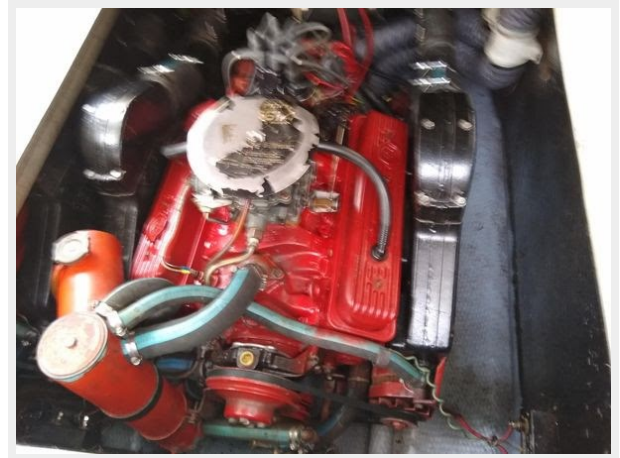
23



24



25





26



27



28



29



30



31





32



33



34



35



36



37



38



39



40



41



42





---

# CONTACTS

---

Andrey Shestakov, leading yacht broker of the sales department of Shestakov Yacht Sales Inc. Shestakov Yacht Sales Inc., the official representative of the Miami/Fort Lauderdale FL headquarters.

---

## Contact details

---

Email: [andrey@shestakovyachtsales.com](mailto:andrey@shestakovyachtsales.com)

Web: [shestakovyachtsales.com/en/](http://shestakovyachtsales.com/en/)

---

## Telephones

---

USA: +1(954)274-4435

---

## Office hours

---

Monday – Saturday: **9:00 - 21:00** EDT

Sunday: **closed**

---

## Address

---



Harbour Towne Marina, 850 NE 3rd St,  
STE 213, Dania, FL 33004