

DUET — SABRE YACHTS



Builder: SABRE YACHTS

Year Built: 1988

Model: Cruising Sailboat

Price: \$34,900 USD

Location: United States

LOA: 34' 2" (10.41mm)

Beam: 11.16

Max Draft: 6' (1.83mm)

Our experienced yacht broker, Andrey Shestakov, will help you choose and buy a yacht that best suits your needs **DUET — SABRE YACHTS** from our catalogue. Presently, at Shestakov Yacht Sales Inc., we have a wide variety of yachts available on our sale's list. We also work in close contact with all the big yacht manufacturers from all over the world.

If you would like to buy a yacht **DUET — SABRE YACHTS** or would like help answering any questions concerning purchasing, selling or chartering a yacht, please call **+1(954)274-4435**

TABLE OF CONTENTS

TABLE OF CONTENTS	2
SPECIFICATIONS	6
Overview	6
Basic Information	6
Dimensions	6
Speed, Capacities and Weight	6
Accommodations	6
Hull and Deck Information	7
Engine Information	7
PHOTOS	8
2	8
3	8
5	8
4	8
6	9
7	9
8	9
9	9
10	9
11	9
13	10
12	10
15	10
14	10
16	11
17	11
18	11
19	11

20	12
21	12
22	12
23	12
25	13
24	13
26	13
27	13
28	14
29	14
30	14
31	14
32	14
33	14
34	15
35	15
36	15
37	15
38	15
39	15
41	16
40	16
42	16
43	16
44	16
45	16
46	17
47	17
48	17

49	17
50	18
51	18
52	18
53	18
55	18
54	18
56	19
57	19
58	19
59	19
60	19
61	19
63	20
62	20
64	20
65	20
66	20
67	20
68	21
69	21
70	21
71	21
73	22
72	22
74	22
75	22
76	22
77	22

78	23
79	23
80	23
81	23
83	23
82	23
84	24
85	24
86	24
87	24
88	24
89	24
91	25
90	25
92	25
93	25
94	26
95	26
96	26
97	26
CONTACTS	27
Contact details	27
Telephones	27
Office hours	27
Address	27

SPECIFICATIONS

Overview

DUET is a very nice example of the popular Sabre 34 Mk II. DUET would be a great boat for a couple or a small family looking for a boat that will serve them well for a day or evening sail, some club racing or for a summer trip to Block Island or beyond.

She has been very well maintained by her only second owner and shows well. She has a newer Westerbeke 35e Diesel installed in 2015 with 1035 hrs, Doyle Stack Pack Main Sail new in 2017, Sea Frost Refrigeration and True Sign ware 120V to 12V inverter. This is one to look at. Thank you for your time and consideration.

Basic Information

Category: Cruising Sailboat

Model Year: 1988

Year Built: 1988

Country: United States

Dimensions

LOA: 34' 2" (10.41mm)

LWL: 28' 4" (8.64mm)

Beam: 11.16

Max Draft: 6' (1.83mm)

Speed, Capacities and Weight

Water Capacity: 75 Gallons

Holding Tank: 15 Gal Gallons

Fuel Capacity: 25 Gal Gallons

Accommodations

Total Cabins: 2

Total Berths: 4

Total Heads: 1

Hull and Deck Information

Hull Material: Fiberglass

Engine Information

Engines: 1

Manufacturer: westerbeke

Engine Type: Inboard

Fuel Type: Diesel

PHOTOS

2



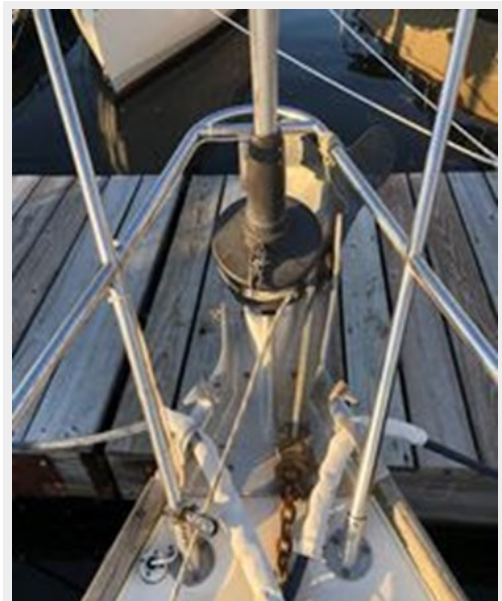
3



4



5



6



7



8



9



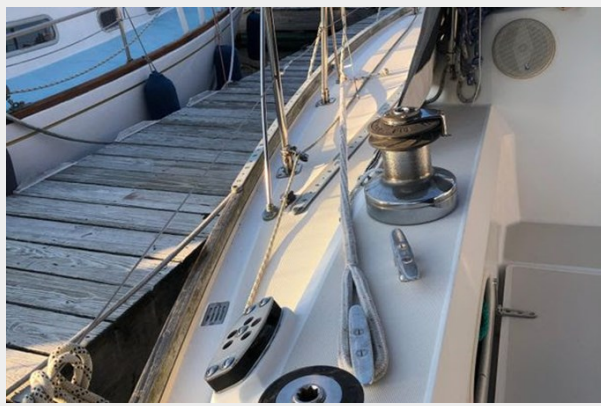
10



11



12



13



14



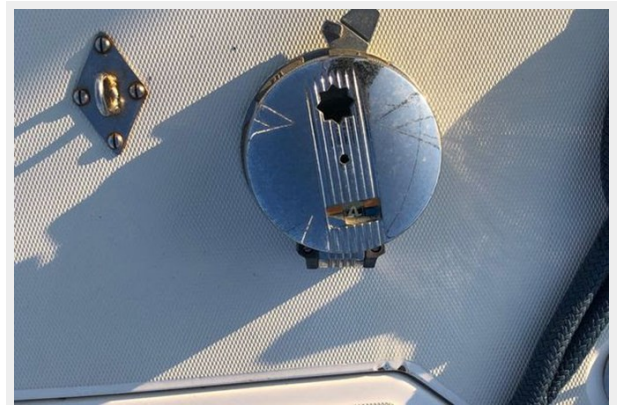
15



16



17



18



19



20



21



22



23



24



25



26



27



28



29



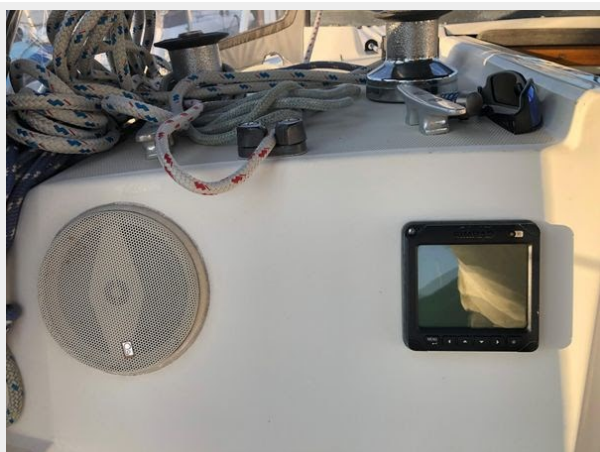
30



31



32



33



34



35



36



37



38



39



40



41



42



43



44



45



46



47



48



49



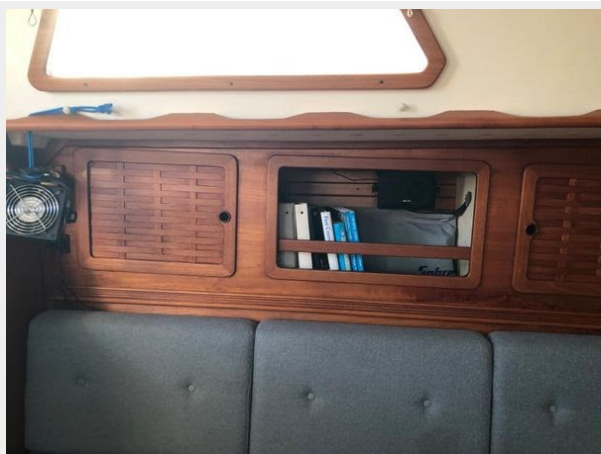
50



51



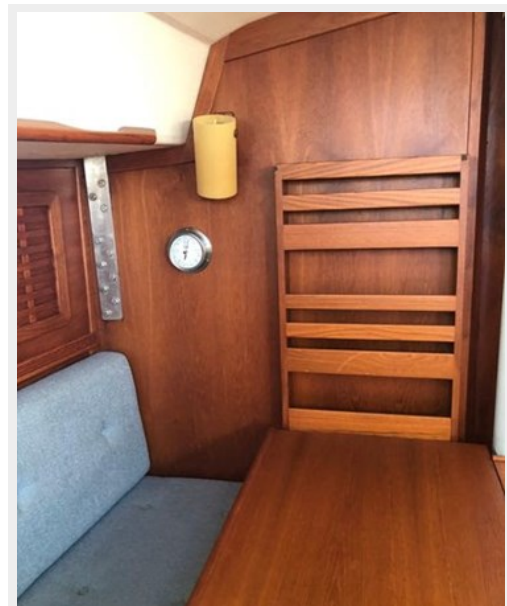
52



53



55



54



56



57



58



59



60



61



62



63



64



65



66



67



68



69



70



71



72



73



74



75



76



77



78



79



80

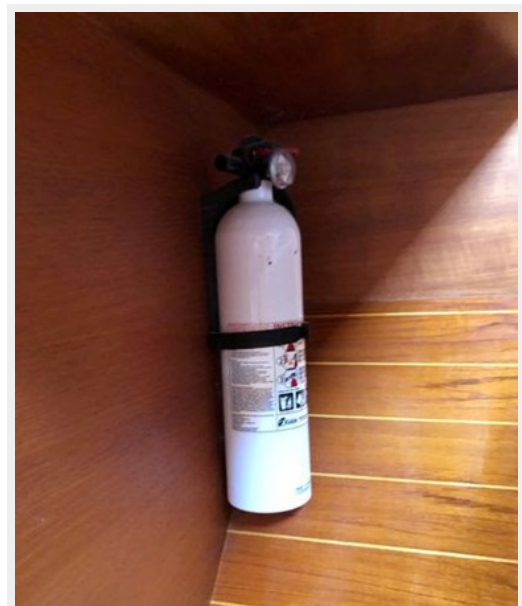


81



83

82



84



85



86



87



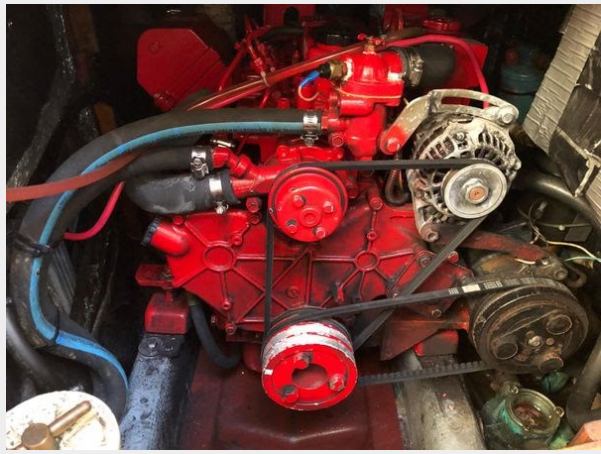
88



89



90



91



92



93



94



95



96



97



CONTACTS

Andrey Shestakov, leading yacht broker of the sales department of Shestakov Yacht Sales Inc. Shestakov Yacht Sales Inc., the official representative of the Miami/Fort Lauderdale FL headquarters.

Contact details

Email: andrey@shestakovyachtsales.com

Web: shestakovyachtsales.com/en/

Telephones

USA: +1(954)274-4435

Office hours

Monday – Saturday: **9:00 - 21:00** EDT

Sunday: **closed**

Address



Harbour Towne Marina, 850 NE 3rd St,
STE 213, Dania, FL 33004