

SANGHA — CUSTOM LINE



Builder: CUSTOM LINE

Year Built: 2020

Model: Motor Yacht

Price: PRICE ON APPLICATION

Location: Spain

LOA: 137' 10" (42mm)

Beam: 26.9

Max Draft: 7' 11" (2.4mm)

Cruise Speed: 10 Knots Kts. (12 MPH)

Max Speed: 16.8 Knots Kts. (19 MPH)

Our experienced yacht broker, Andrey Shestakov, will help you choose and buy a yacht that best suits your needs **SANGHA — CUSTOM LINE** from our catalogue. Presently, at Shestakov Yacht Sales Inc., we have a wide variety of yachts available on our sale's list. We also work in close contact with all the big yacht manufacturers from all over the world.

If you would like to buy a yacht **SANGHA — CUSTOM LINE** or would like help answering any questions concerning purchasing, selling or chartering a yacht, please call **+1(954)274-4435**

TABLE OF CONTENTS

TABLE OF CONTENTS	2
SPECIFICATIONS	5
Overview	5
Basic Information	5
Dimensions	5
Speed, Capacities and Weight	5
Accommodations	5
Hull and Deck Information	6
Engine Information	6
PHOTOS	7
yacht-sangha-exterior-01	7
yacht-sangha-exterior-02	7
yacht-sangha-exterior-03	7
yacht-sangha-exterior-06	7
yacht-sangha-exterior-07	7
yacht-sangha-exterior-08	7
yacht-sangha-exterior-09	8
yacht-sangha-exterior-10	8
yacht-sangha-exterior-13	8
yacht-sangha-exterior-14	8
yacht-sangha-exterior-15	8
yacht-sangha-exterior-17	8
yacht-sangha-exterior-19	9
yacht-sangha-exterior-21	9
yacht-sangha-exterior-30	9
yacht-sangha-exterior-31	9
yacht-sangha-exterior-32	9
yacht-sangha-exterior-33	10

yacht-sangha-exterior-34	10
yacht-sangha-interior-01	10
yacht-sangha-interior-02	10
yacht-sangha-interior-03	10
yacht-sangha-interior-04	10
yacht-sangha-interior-05	11
yacht-sangha-interior-06	11
yacht-sangha-interior-07	11
yacht-sangha-interior-08	11
yacht-sangha-interior-09	11
yacht-sangha-interior-10	11
yacht-sangha-interior-11	12
yacht-sangha-interior-12	12
yacht-sangha-interior-13	12
yacht-sangha-interior-15	12
yacht-sangha-interior-16	12
yacht-sangha-interior-17	12
yacht-sangha-interior-18	13
yacht-sangha-interior-19	13
yacht-sangha-interior-20	13
yacht-sangha-interior-21	13
yacht-sangha-running-01	13
yacht-sangha-running-02	13
yacht-sangha-running-03	14
yacht-sangha-running-04	14
yacht-sangha-running-05	14
yacht-sangha-running-06	14
yacht-sangha-running-07	14
yacht-sangha-running-08	14

yacht-sangha-running-09	15
yacht-sangha-running-10	15
yacht-sangha-running-11	15
yacht-sangha-running-12	15
yacht-sangha-running-13	15
yacht-sangha-running-14	15
yacht-sangha-tender-01	16
CONTACTS	17
Contact details	17
Telephones	17
Office hours	17
Address	17

SPECIFICATIONS

Overview

Exceptionally well-kept
In strict compliance with MCA commercial standards
Comes with a 40-foot Van Dutch Chase Boat included (VAT paid)
Knowledgeable owner and construction team
Expansive window feature in Master Cabin
Folding balconies in Main Salon on both port and starboard sides
Built-in stern door / after swimming platform
Bright and contemporary interior
Expansive sundeck complemented by a sizable 6-person jacuzzi

Basic Information

Category: Motor Yacht

Sub Category: Motor Yacht

Model Year: 2020

Year Built: 2020

Country: Spain

Dimensions

LOA: 137' 10" (42mm)

Beam: 26.9

Max Draft: 7' 11" (2.4mm)

Speed, Capacities and Weight

Cruise Speed: 10 Knots Kts. (12 MPH)

Cruise Speed Range: 3000

Max Speed: 16.8 Knots Kts. (19 MPH)

Gross Tonnage: 348 Pounds

Water Capacity: 4000 Gallons

Fuel Capacity: 9774.37 Gal Gallons

Accommodations

Total Cabins: 5

Sleeps: 11

Total Heads: 2

Crew Cabin: 8

Hull and Deck Information

Hull Material: GRP

Exterior Designer: Zuccon International
Project

Interior Designer: Zuccon International
Project / Samantha Broughton

Engine Information

Engines: 2

Manufacturer: Caterpillar

PHOTOS

yacht-sangha-exterior-01



yacht-sangha-exterior-02



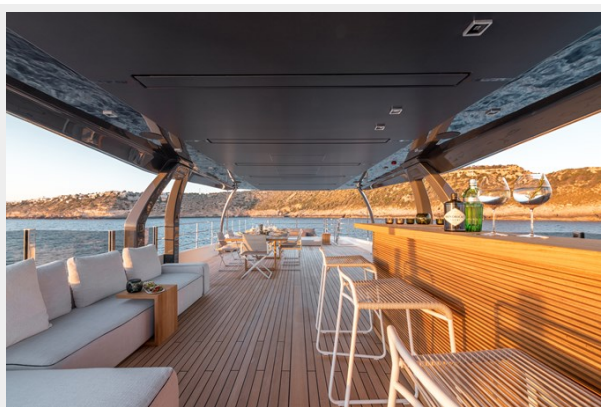
yacht-sangha-exterior-03



yacht-sangha-exterior-06



yacht-sangha-exterior-07



yacht-sangha-exterior-08



yacht-sangha-exterior-09



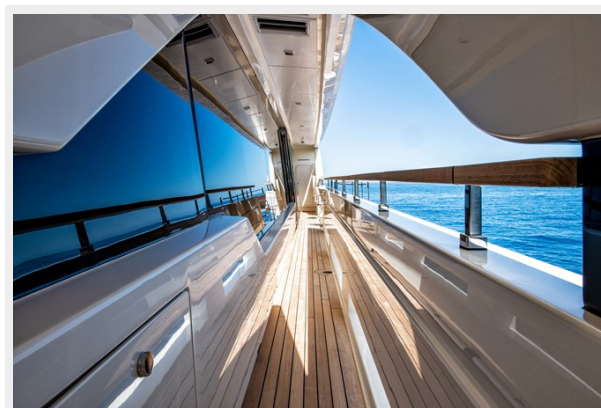
yacht-sangha-exterior-10



yacht-sangha-exterior-13



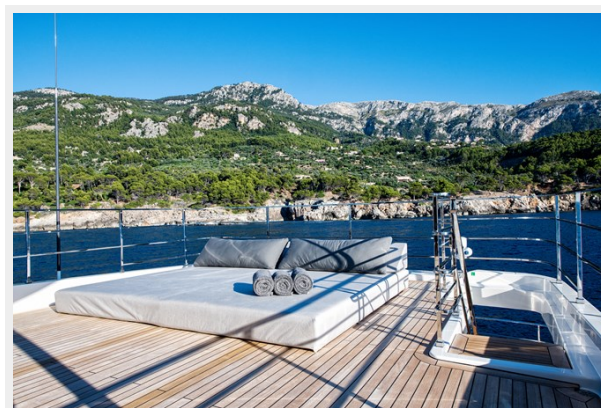
yacht-sangha-exterior-14



yacht-sangha-exterior-15



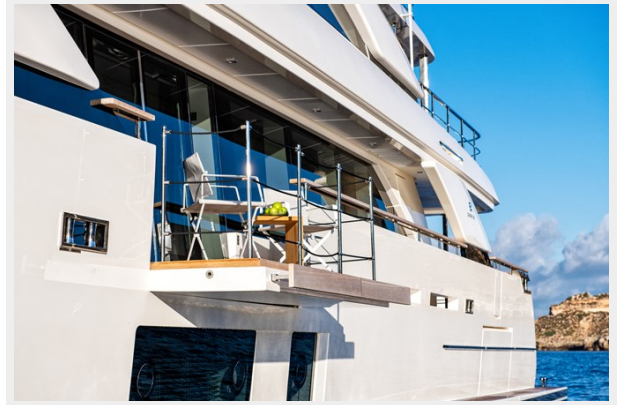
yacht-sangha-exterior-17



yacht-sangha-exterior-19



yacht-sangha-exterior-21



yacht-sangha-exterior-30



yacht-sangha-exterior-31



yacht-sangha-exterior-32



yacht-sangha-exterior-33



yacht-sangha-exterior-34



yacht-sangha-interior-01



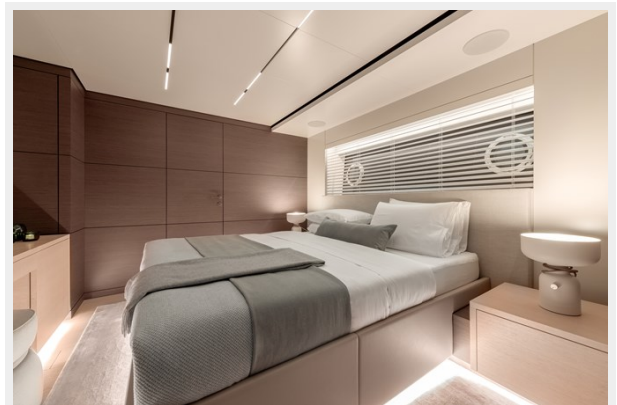
yacht-sangha-interior-02



yacht-sangha-interior-03



yacht-sangha-interior-04



yacht-sangha-interior-05



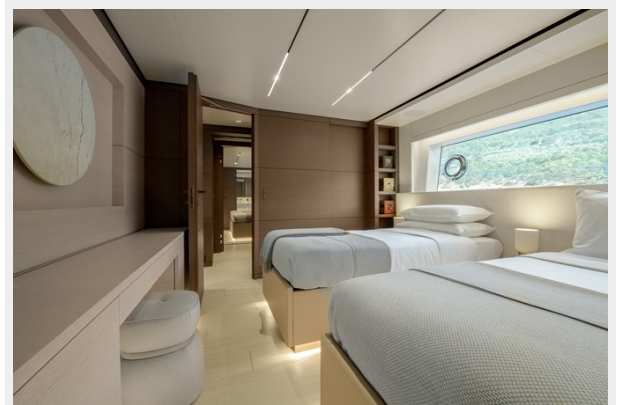
yacht-sangha-interior-06



yacht-sangha-interior-07



yacht-sangha-interior-08



yacht-sangha-interior-09



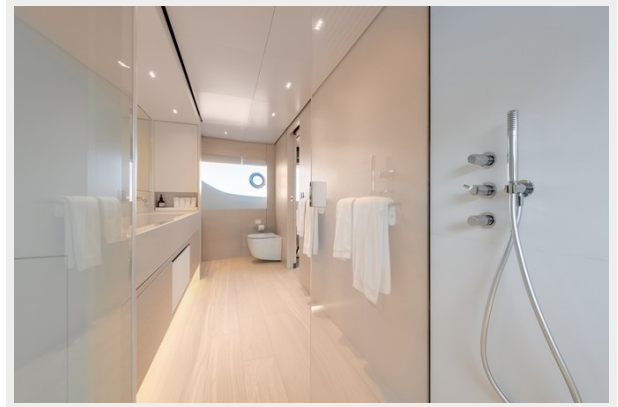
yacht-sangha-interior-10



yacht-sangha-interior-11



yacht-sangha-interior-12



yacht-sangha-interior-13



yacht-sangha-interior-15



yacht-sangha-interior-16



yacht-sangha-interior-17



yacht-sangha-interior-18



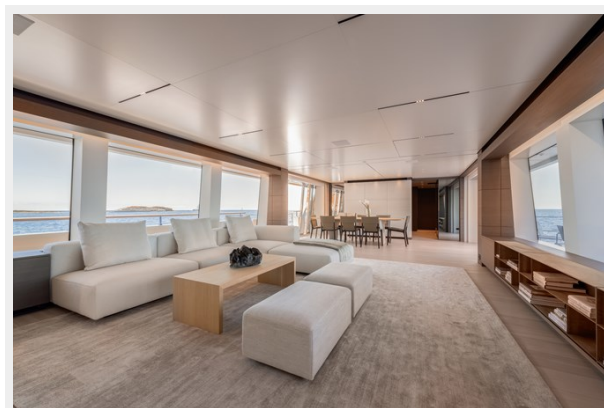
yacht-sangha-interior-19



yacht-sangha-interior-20



yacht-sangha-interior-21



yacht-sangha-running-01



yacht-sangha-running-02



yacht-sangha-running-03



yacht-sangha-running-04



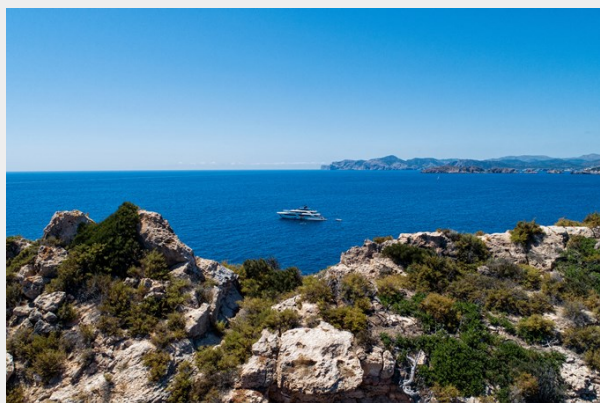
yacht-sangha-running-05



yacht-sangha-running-06



yacht-sangha-running-07



yacht-sangha-running-08



yacht-sangha-running-09



yacht-sangha-running-10



yacht-sangha-running-11



yacht-sangha-running-12



yacht-sangha-running-13



yacht-sangha-running-14



yacht-sangha-tender-01



CONTACTS

Andrey Shestakov, leading yacht broker of the sales department of Shestakov Yacht Sales Inc. Shestakov Yacht Sales Inc., the official representative of the Miami/Fort Lauderdale FL headquarters.

Contact details

Email: andrey@shestakovyachtsales.com

Web: shestakovyachtsales.com/en/

Telephones

USA: +1(954)274-4435

Office hours

Monday – Saturday: **9:00 - 21:00** EDT

Sunday: **closed**

Address



Harbour Towne Marina, 850 NE 3rd St,
STE 213, Dania, FL 33004