

## 2017 32' CENTURY — CENTURY BOATS



**Builder:** CENTURY BOATS

**Year Built:** 2017

**Model:** Motor Yacht

**Price:** Price on Application

**Location:** United States

**LOA:** 32' (9.75mm)

**Beam:** 10.5

**Min Draft:** 1' 6" (0.46mm)

**Max Draft:** 2' 6" (0.76mm)

**Cruise Speed:** 30 Knots Kts. (35 MPH)

**Max Speed:** 40 Knots Kts. (46 MPH)

Our experienced yacht broker, Andrey Shestakov, will help you choose and buy a yacht that best suits your needs 2017 32' CENTURY — CENTURY BOATS from our catalogue. Presently, at Shestakov Yacht Sales Inc., we have a wide variety of yachts available on our sale's list. We also work in close contact with all the big yacht manufacturers from all over the world.

If you would like to buy a yacht 2017 32' CENTURY — CENTURY BOATS or would like help answering any questions concerning purchasing, selling or chartering a yacht, please call +1(954)274-4435

# TABLE OF CONTENTS

TABLE OF CONTENTS	2
SPECIFICATIONS	6
Overview	6
Basic Information	6
Dimensions	6
Speed, Capacities and Weight	6
Accommodations	7
Hull and Deck Information	7
Engine Information	7
PHOTOS	8
IMG_7731	8
IMG_7732	8
IMG_7733	8
IMG_7734	8
IMG_7735	8
IMG_7736	8
IMG_7737	9
IMG_7738	9
IMG_7739	9
IMG_7740	9
IMG_7741	9
IMG_7742	9
IMG_7745	10
IMG_7746	10
IMG_7747	10
IMG_7749	10
IMG_7750	10
IMG_7751	10

---

IMG_7754	11
IMG_7753	11
IMG_7756	11
IMG_7757	11
IMG_7758	11
IMG_7759	11
IMG_7762	12
IMG_7761	12
IMG_7763	12
IMG_7764	12
IMG_7766	12
IMG_7767	12
IMG_7768	13
IMG_7770	13
IMG_7771	13
IMG_7772	13
IMG_7773	13
IMG_7774	13
IMG_7775	14
IMG_7776	14
IMG_7777	14
IMG_7778	14
IMG_7779	14
IMG_7780	14
IMG_7781	15
IMG_7782	15
IMG_7783	15
IMG_7786	15
IMG_7788	15

---

---

IMG_7789	15
IMG_7790	16
IMG_7792	16
IMG_7793	16
IMG_7794	16
IMG_7795	16
IMG_7796	16
IMG_7797	17
IMG_7798	17
IMG_7799	17
IMG_7800	17
IMG_7801	17
IMG_7802	17
IMG_7803	18
IMG_7804	18
IMG_7807	18
IMG_7808	18
IMG_7809	18
IMG_7810	18
IMG_7811	19
IMG_7812	19
IMG_7814	19
IMG_7815	19
IMG_7816	19
IMG_7817	19
IMG_7819	20
IMG_7818	20
IMG_7820	20
IMG_7821	20

---

---

IMG_7822	20
IMG_7823	20
IMG_7824	21
IMG_7826	21
IMG_7827	21
IMG_7828	21
IMG_7831	21
IMG_7838	21
IMG_7839	22
IMG_7841	22
CONTACTS	23
Contact details	23
Telephones	23
Office hours	23
Address	23

---

# SPECIFICATIONS

---

## Overview

---

This beautiful 2017 Century 3200 has features both designed for tournament fishing and the family outings during the day. Lots of luxury, massive cockpit & bow space made for entertaining. Accessories include upgraded Raymarine electronics, FLIR, oversized livewell, several rod storage & fish boxes forward & aft, Outriggers, and ample storage. This 3200 CC offers an enclosed head with plenty of space, a single berth, forward-facing bow seating and a standard bow entertainment table that creates the perfect social center. Powered by twin 300hp Yamahas with 345hrs. This the perfect center console for your dynamic boating needs. Contact Joel Gomes today to schedule a in-person or virtual showing.

## Basic Information

---

**Category:** Motor Yacht

**Model Year:** 2017

**Year Built:** 2017

**Country:** United States

## Dimensions

---

**LOA:** 32' (9.75mm)

**Beam:** 10.5

**Min Draft:** 1' 6" (0.46mm)

**Max Draft:** 2' 6" (0.76mm)

## Speed, Capacities and Weight

---

**Cruise Speed:** 30 Knots Kts. (35 MPH)

**Cruise Speed Range:** 200

**Max Speed:** 40 Knots Kts. (46 MPH)

**Max Speed Range:** 100 Kts.

**Gross Tonnage:** 10 Pounds

**Water Capacity:** 50 Gallons

**Holding Tank:** 25 Gal Gallons

**Fuel Capacity:** 150 Gal Gallons

---

## Accommodations

---

**Total Cabins:** 2

**Total Berths:** 4

**Sleeps:** 4

**Total Heads:** 1

**Crew Cabin:** 2

**Crew Berths:** 2

**Crew Heads:** 1

---

## Hull and Deck Information

---

**Hull Material:** Fiberglass

**Deck Material:** Fiberglass

**Hull Configuration:** Monohull

**Hull Designer:** Century Team

**Interior Designer:** Century Team

---

## Engine Information

---

**Engines:** 2

**Manufacturer:** Yamaha

**Fuel Type:** Diesel

# PHOTOS

IMG\_7731



IMG\_7732



IMG\_7733



IMG\_7734



IMG\_7735



IMG\_7736





IMG\_7737



IMG\_7738



IMG\_7739



IMG\_7740



IMG\_7741



IMG\_7742



IMG\_7745



IMG\_7746



IMG\_7747



IMG\_7749



IMG\_7750



IMG\_7751



IMG\_7753



IMG\_7754



IMG\_7756



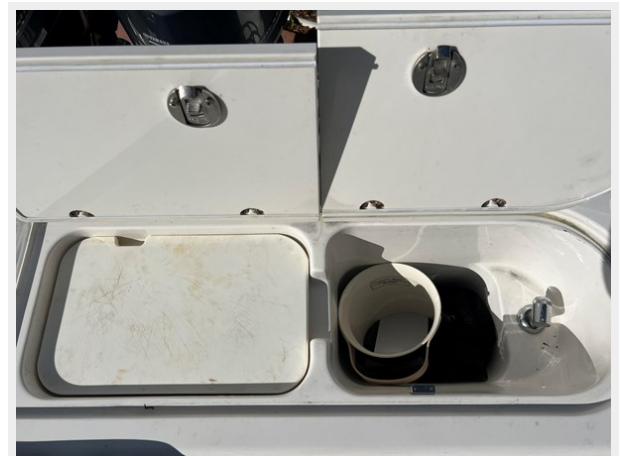
IMG\_7757



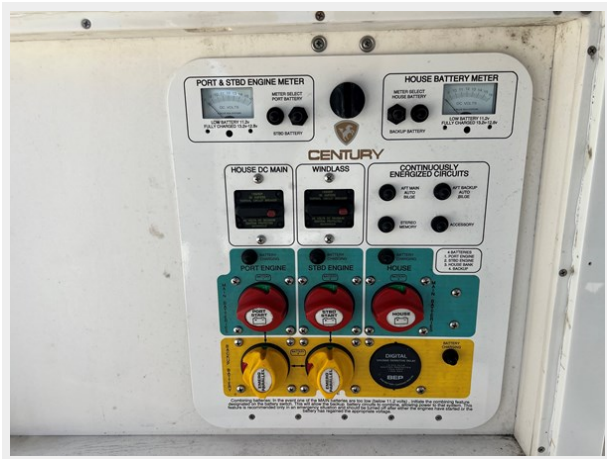
IMG\_7758



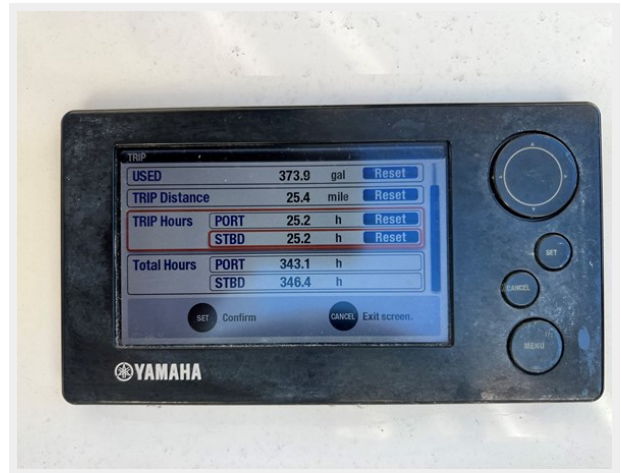
IMG\_7759



IMG\_7761



IMG\_7762



IMG\_7763



IMG\_7764



IMG\_7766



IMG\_7767



IMG\_7768



IMG\_7770



IMG\_7771



IMG\_7772



IMG\_7773



IMG\_7774



IMG\_7775



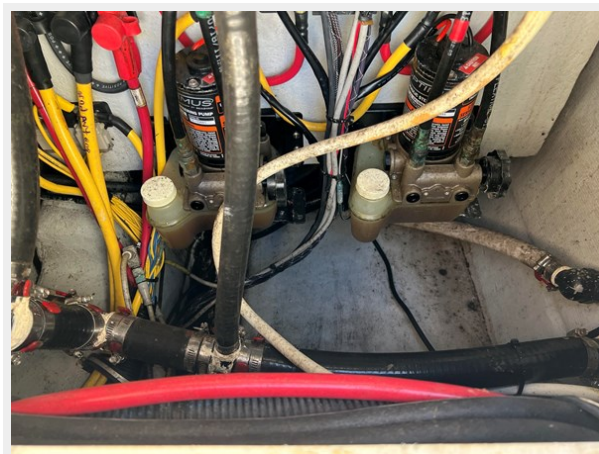
IMG\_7776



IMG\_7777



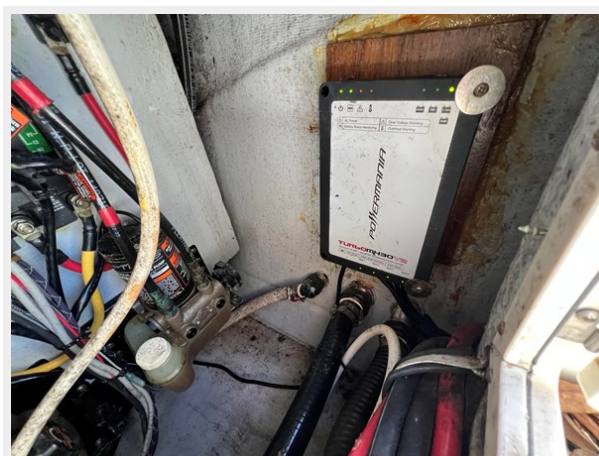
IMG\_7778



IMG\_7779



IMG\_7780



IMG\_7781



IMG\_7782



IMG\_7783



IMG\_7786



IMG\_7788



IMG\_7789



IMG\_7790



IMG\_7792



IMG\_7793



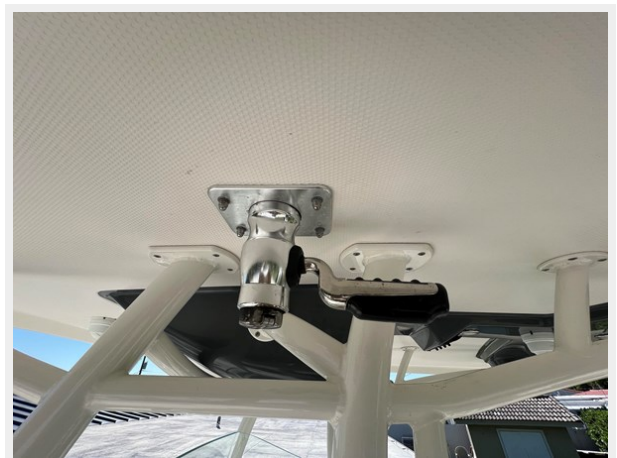
IMG\_7794



IMG\_7795



IMG\_7796





IMG\_7797



IMG\_7798



IMG\_7799



IMG\_7800



IMG\_7801



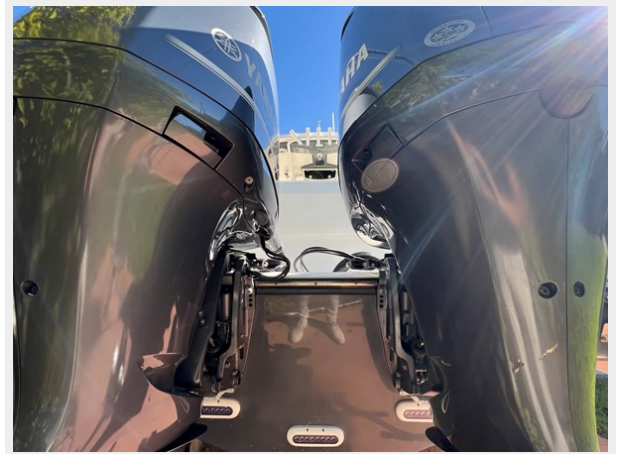
IMG\_7802



IMG\_7803



IMG\_7804



IMG\_7807



IMG\_7808



IMG\_7809



IMG\_7810



IMG\_7811



IMG\_7812



IMG\_7814



IMG\_7815



IMG\_7816



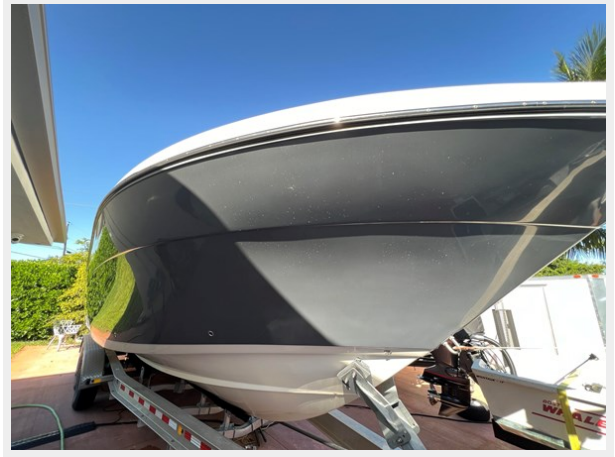
IMG\_7817



IMG\_7818



IMG\_7819



IMG\_7820



IMG\_7821



IMG\_7822



IMG\_7823



IMG\_7824



IMG\_7826



IMG\_7827



IMG\_7828



IMG\_7831



IMG\_7838



IMG\_7839



IMG\_7841



# CONTACTS

---

Andrey Shestakov, leading yacht broker of the sales department of Shestakov Yacht Sales Inc. Shestakov Yacht Sales Inc., the official representative of the Miami/Fort Lauderdale FL headquarters.

## Contact details

---

Email: [andrey@shestakovyachtsales.com](mailto:andrey@shestakovyachtsales.com)

Web: [shestakovyachtsales.com/en/](http://shestakovyachtsales.com/en/)

## Telephones

---

USA: +1(954)274-4435

## Office hours

---

Monday – Saturday: **9:00 - 21:00** EDT

Sunday: **closed**

## Address

---



Harbour Towne Marina, 850 NE 3rd St,  
STE 213, Dania, FL 33004