

# 1972 SOUTHERN MARINE 65 MALAHIDE TRAWLER — SOUTHERN MARINE



**Builder:** SOUTHERN MARINE

**LOA:** 65' (19.81m)

**Year Built:** 1972

**Beam:** 19.75

**Model:** trawler

**Price:** \$469,500 USD

**Location:** United States

Our experienced yacht broker, Andrey Shestakov, will help you choose and buy a yacht that best suits your needs. The 1972 Southern Marine 65 Malahide Trawler — SOUTHERN MARINE is available from our catalogue. Presently, at Shestakov Yacht Sales Inc., we have a wide variety of yachts available on our sale's list. We also work in close contact with all the big yacht manufacturers from all over the world.

If you would like to buy a yacht 1972 Southern Marine 65 Malahide Trawler — SOUTHERN MARINE or would like help answering any questions concerning purchasing, selling or chartering a yacht, please call **+1(954)274-4435**

# TABLE OF CONTENTS

---

TABLE OF CONTENTS	2
SPECIFICATIONS	3
Overview	3
Basic Information	3
Dimensions	3
Speed, Capacities and Weight	4
Accommodations	4
Hull and Deck Information	4
Engine Information	4
PHOTOS	5
Southern Marine Malahide Trawler - Looking Forward	5
Southern Marine Malahide Trawler - Looking Aft	5
Southern Marine Malahide Trawler - Galley	5
Southern Marine Malahide Trawler - Salon	5
Southern Marine Malahide Trawler - Salon Table	6
Southern Marine Malahide Trawler - Pilothouse	6
Southern Marine Malahide Trawler - Forward Salon	6
Southern Marine Malahide Trawler - Master Suite	6
Southern Marine Malahide Trawler - Guest Suite	7
Southern Marine Malahide Trawler - Helm	7
Southern Marine Malahide Trawler - Crews Quarters	7
Southern Marine Malahide Trawler - Cockpit	7
CONTACTS	8
Contact details	8
Telephones	8
Office hours	8
Address	8

# SPECIFICATIONS

---

## Overview

---

Southern Marine Malahide Trawler Live Aboard, Voyage & Charter

For Sale by Waterline Boats Seattle

Benefit from an immersive experience, featuring 9 Virtual Tours, 2 Videos, and 250 photos, along with comprehensive specs and expert broker's commentary. All of this is available for the Malahide Trawler - Contact our Waterline Boats Broker!

Boat REF# · 256571 Length · 65'0" Year · 1972 Construction · Wood Underwater profile · Full-Displacement Sleeping berths · 12 Engine · 1 x diesel 375hp, Caterpillar TA D-353 (1980) Lying · Seattle, WA USA - Shown by Appointment Broker's Comments: Malahide Trawlers were created as long-distance ocean-capable voyaging yachts. These boats conformed to the proven design and construction found in North Sea fishing vessels which sailed in all weather conditions. Malahides were designed by Myles Stapleton and constructed primarily in Norway, Ireland, and Portugal depending on the model. All of the boats had in common: hull construction using heavy timbers, framing, and planking; single engine propulsion with very large engines; extensive tankage for long distance travel; independent power generation capability; and extensive safety systems for offshore voyaging.

## Basic Information

---

**Category:** trawler

**Sub Category:** Pilothouse

**Model Year:** 1972

**Year Built:** 1972

**Country:** United States

## Dimensions

---

**LOA:** 65' (19.81mm)

**Beam:** 19.75

---

## Speed, Capacities and Weight

---

**Water Capacity:** 500 Gallons

**Holding Tank:** 88 Gal Gallons

**Fuel Capacity:** 2200 Gal Gallons

---

## Accommodations

---

**Total Cabins:** 3

**Total Berths:** 12

**Total Heads:** 3

---

## Hull and Deck Information

---

**Hull Material:** Wood

**Hull Configuration:** Full Displacement

---

## Engine Information

---

**Engines:** 1

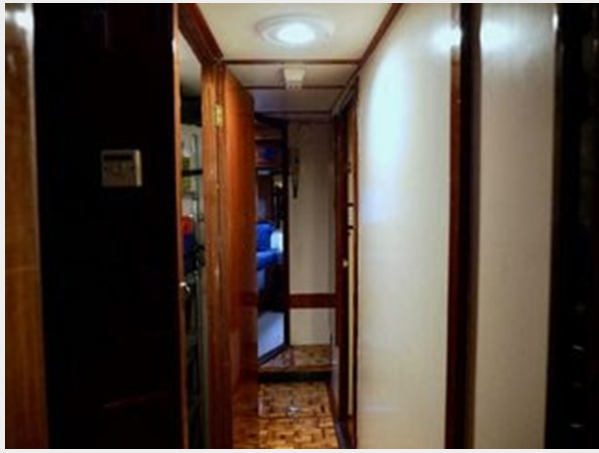
**Manufacturer:** Caterpillar

**Engine Type:** Inboard

**Fuel Type:** Diesel

# PHOTOS

**Southern Marine Malahide Trawler - Looking Forward**



**Southern Marine Malahide Trawler - Looking Aft**



**Southern Marine Malahide Trawler - Galley**



**Southern Marine Malahide Trawler - Salon**





**Southern Marine Malahide Trawler - Salon  
Table**



**Southern Marine Malahide Trawler -  
Pilothouse**



**Southern Marine Malahide Trawler - Forward  
Salon**



**Southern Marine Malahide Trawler - Master  
Suite**



### Southern Marine Malahide Trawler - Guest Suite



### Southern Marine Malahide Trawler - Helm



### Southern Marine Malahide Trawler - Crews Quarters



### Southern Marine Malahide Trawler - Cockpit



# CONTACTS

---

Andrey Shestakov, leading yacht broker of the sales department of Shestakov Yacht Sales Inc. Shestakov Yacht Sales Inc., the official representative of the Miami/Fort Lauderdale FL headquarters.

## Contact details

---

Email: [andrey@shestakovyachtsales.com](mailto:andrey@shestakovyachtsales.com)

Web: [shestakovyachtsales.com/en/](http://shestakovyachtsales.com/en/)

## Telephones

---

USA: +1(954)274-4435

## Office hours

---

Monday – Saturday: **9:00 - 21:00** EDT

Sunday: **closed**

## Address

---



Harbour Towne Marina, 850 NE 3rd St,  
STE 213, Dania, FL 33004