

1988 CARVER 42 AFT CABIN — CARVER



Builder: CARVER

Year Built: 1988

Model: Aft Cabin

Price: PRICE ON APPLICATION

Location: United States

LOA: 42' (12.8mm)

Beam: 16

Cruise Speed: 13 Knots Kts. (15 MPH)

Max Speed: 15 Knots Kts. (17 MPH)

Our experienced yacht broker, Andrey Shestakov, will help you choose and buy a yacht that best suits your needs 1988 Carver 42 Aft Cabin — CARVER from our catalogue. Presently, at Shestakov Yacht Sales Inc., we have a wide variety of yachts available on our sale's list. We also work in close contact with all the big yacht manufacturers from all over the world.

If you would like to buy a yacht 1988 Carver 42 Aft Cabin — CARVER or would like help answering any questions concerning purchasing, selling or chartering a yacht, please call +1(954)274-4435

TABLE OF CONTENTS

TABLE OF CONTENTS	2
SPECIFICATIONS	4
Overview	4
Basic Information	4
Dimensions	4
Speed, Capacities and Weight	4
Accommodations	4
Hull and Deck Information	4
Engine Information	5
PHOTOS	6
P_004	6
P_005	6
P_006	6
P_007	6
P_008	6
P_009	6
P_010	7
P_011	7
P_012	7
P_013	7
P_014	7
P_015	7
P_016	8
P_017	8
P_018	8
P_019	8
P_020	8
P_021	8

P_022	9
P_023	9
P_024	9
P_025	9
P_026	9
P_027	9
P_028	10
P_029	10
P_030	10
P_031	10
P_032	10
P_033	10
P_034	11
P_035	11
P_036	11
P_037	11
P_038	11
P_039	11
P_040	12
P_041	12
P_043	12
P_042	12
CONTACTS	13
Contact details	13
Telephones	13
Office hours	13
Address	13

SPECIFICATIONS

Overview

This 42' 1988 Carver Aft Cabin Motoryacht has twin T/3208 Cats (Port motor replaced in 2012) Many upgrades!She is a great live aboard with generator, AC/Heat, New Water Heater 2016, Anchor Windlass, Radar, Chart Plotter, 2 Staterooms and 2 Heads.

Basic Information

Category: Aft Cabin

Sub Category: Aft Cabin

Model Year: 1988

Year Built: 1988

Country: United States

Dimensions

LOA: 42' (12.8mm)

Beam: 16

Speed, Capacities and Weight

Cruise Speed: 13 Knots Kts. (15 MPH)

Max Speed: 15 Knots Kts. (17 MPH)

Water Capacity: 40 Gallons

Holding Tank: 80 Gal Gallons

Fuel Capacity: 400 Gal Gallons

Accommodations

Total Cabins: 2

Total Heads: 2

Hull and Deck Information

Hull Material: Fiberglass

Engine Information

Engines: 2

Manufacturer: Caterpillar

Engine Type: Inboard

Fuel Type: Diesel

PHOTOS

P_004



P_005



P_006



P_007



P_008



P_009



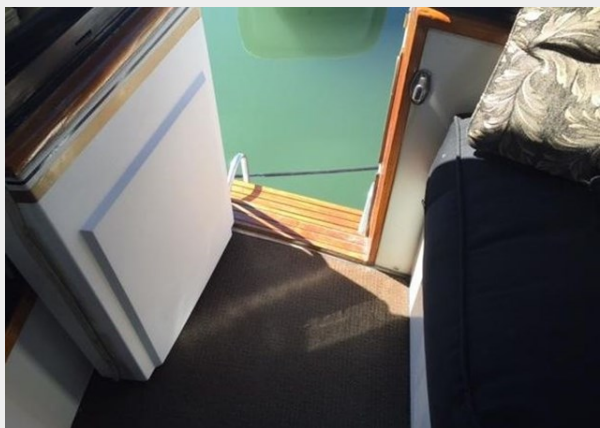
P_010



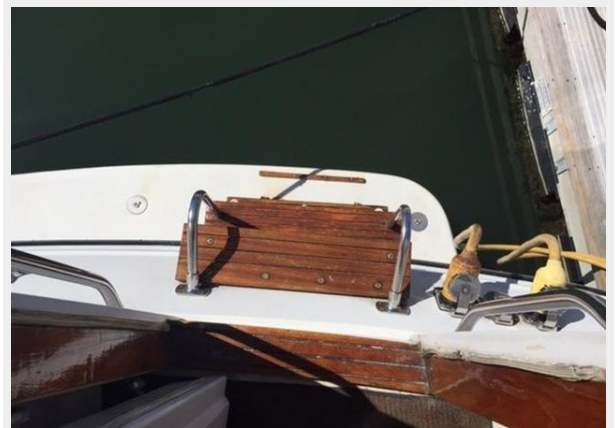
P_011



P_012



P_013



P_014



P_015



P_016



P_017



P_018



P_019



P_020



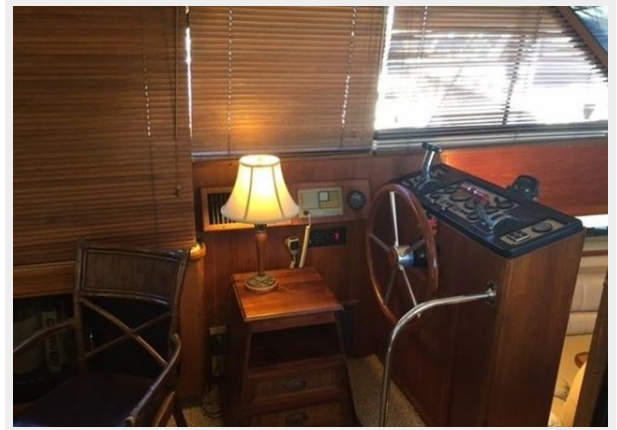
P_021



P_022



P_023



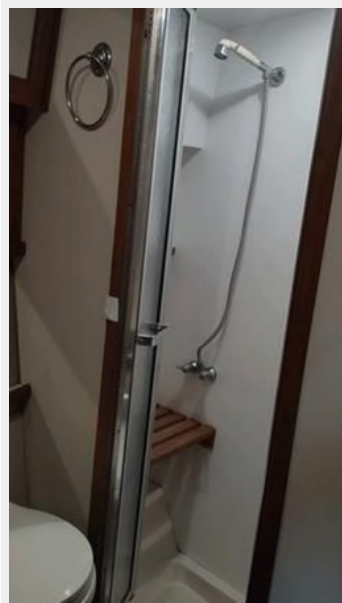
P_024



P_025



P_026



P_027



P_028



P_029



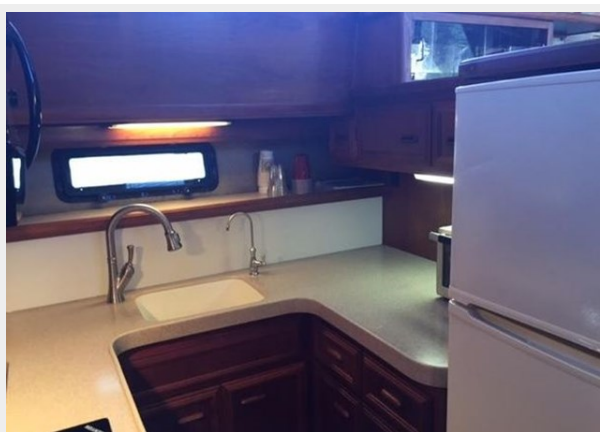
P_030



P_031



P_032



P_033



P_034



P_035



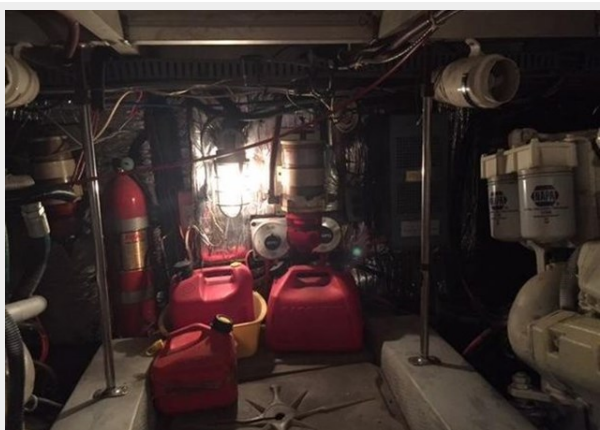
P_036



P_037



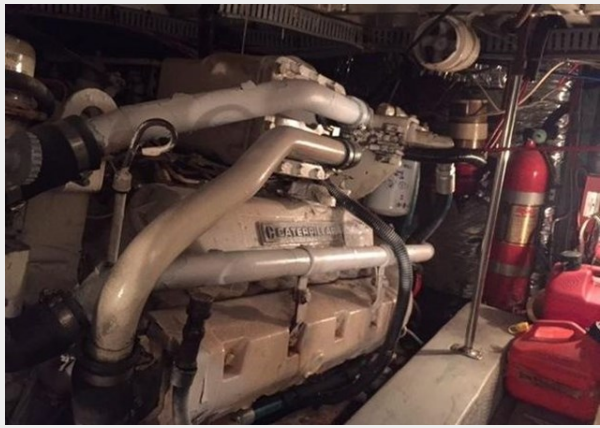
P_038



P_039



P_040



P_041



P_042



P_043



CONTACTS

Andrey Shestakov, leading yacht broker of the sales department of Shestakov Yacht Sales Inc. Shestakov Yacht Sales Inc., the official representative of the Miami/Fort Lauderdale FL headquarters.

Contact details

Email: andrey@shestakovyachtsales.com

Web: shestakovyachtsales.com/en/

Telephones

USA: +1(954)274-4435

Office hours

Monday – Saturday: **9:00 - 21:00** EDT

Sunday: **closed**

Address



Harbour Towne Marina, 850 NE 3rd St,
STE 213, Dania, FL 33004