

# 1999 PARKER 21 SPECIAL EDITION — PARKER MARINE



**Builder:** PARKER MARINE

**Year Built:** 1999

**Model:** center\_console

**Price:** \$34,900 USD

**Location:** United States

**LOA:** 21' (6.4mm)

**Beam:** 8.5

**Max Draft:** 0' 10" (0.25mm)

Our experienced yacht broker, Andrey Shestakov, will help you choose and buy a yacht that best suits your needs 1999 Parker 21 Special Edition — PARKER MARINE from our catalogue. Presently, at Shestakov Yacht Sales Inc., we have a wide variety of yachts available on our sale's list. We also work in close contact with all the big yacht manufacturers from all over the world.

If you would like to buy a yacht 1999 Parker 21 Special Edition — PARKER MARINE or would like help answering any questions concerning purchasing, selling or chartering a yacht, please call +1(954)274-4435

---

# TABLE OF CONTENTS

---

TABLE OF CONTENTS	2
SPECIFICATIONS	4
Overview	4
Basic Information	4
Dimensions	4
Speed, Capacities and Weight	5
Hull and Deck Information	5
Engine Information	5
PHOTOS	6
P_004	6
P_005	6
P_006	6
P_007	6
P_008	6
P_009	6
P_010	7
P_011	7
P_012	7
P_013	7
P_014	7
P_015	7
P_016	8
P_017	8
P_018	8
P_019	8
P_020	8
P_021	8
P_022	9

---

P_023	9
P_024	9
CONTACTS	10
Contact details	10
Telephones	10
Office hours	10
Address	10

---

---

# SPECIFICATIONS

---

## Overview

---

1999 Parker 21 SE2019 Evenrude G2 150 w/ 252 hours - 10 year warranty2018 Venture - Aluminum Bunk Trailer2022 Survey available

- All new – Electrical, Plumbing and fuel lines replaced.
- ETEC GT HO 150HP – 250 Hours. With WARRANTY
- Dealer Installed – Raptor Prop, ICON II Controls, Motor Flusher with Quick Connect
- Live well pump
- Washdown Kit
- Custom Aluminum T-Top
- Custom Aluminum Leaning Post
- Custom Gunnel Handle Off Ladder
- 3 – 0 Degree Swivel Rod Holders
- 9 Rocket Launchers and Rod Holders
- 2 Forward Rod Holders – Adjustable
- 4 Aft Holders
- Power Steering
- Dual GP Redundant Antenna
- Jensen Bluetooth Radio with Speakers
- Included - 2018 Venture Trailer – Dual Axle, 2 NEW Spare Tires

---

## Basic Information

---

**Category:** center\_console

**Sub Category:** Center Console

**Model Year:** 1999

**Year Built:** 1999

**Country:** United States

---

## Dimensions

---

**LOA:** 21' (6.4mm)

**Beam:** 8.5

**Max Draft:** 0' 10" (0.25mm)

---

## Speed, Capacities and Weight

---

**Fuel Capacity:** 84 Gal Gallons

---

## Hull and Deck Information

---

**Hull Material:** Fiberglass

**Hull Configuration:** Modified V-Hull

---

## Engine Information

---

**Engines:** 1

**Manufacturer:** Evinrude

**Engine Type:** Outboard

**Fuel Type:** Gas

# PHOTOS

P\_004



P\_005



P\_006



P\_007



P\_008



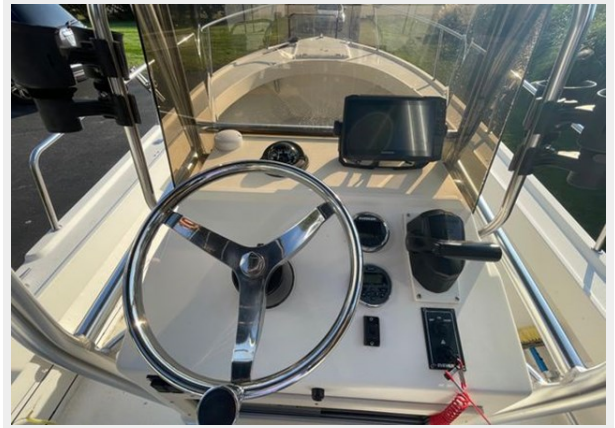
P\_009



P\_010



P\_011



P\_012



P\_013



P\_014



P\_015



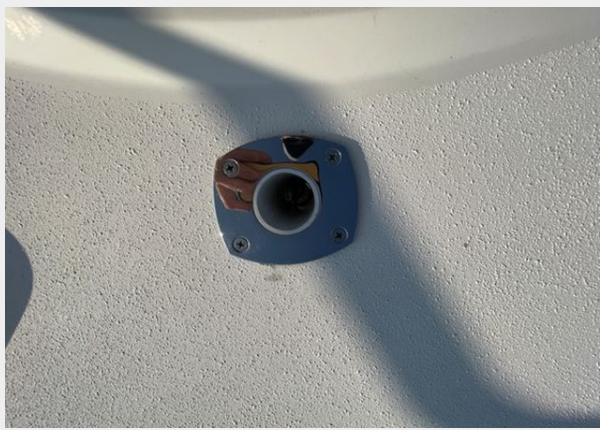
P\_016



P\_017



P\_018



P\_019



P\_020



P\_021





P\_022



P\_023



P\_024



# CONTACTS

---

Andrey Shestakov, leading yacht broker of the sales department of Shestakov Yacht Sales Inc. Shestakov Yacht Sales Inc., the official representative of the Miami/Fort Lauderdale FL headquarters.

## Contact details

---

Email: [andrey@shestakovyachtsales.com](mailto:andrey@shestakovyachtsales.com)

Web: [shestakovyachtsales.com/en/](http://shestakovyachtsales.com/en/)

## Telephones

---

USA: +1(954)274-4435

## Office hours

---

Monday – Saturday: **9:00 - 21:00** EDT

Sunday: **closed**

## Address

---



Harbour Towne Marina, 850 NE 3rd St,  
STE 213, Dania, FL 33004