

2006 COBALT 24 SX — COBALT



Builder: COBALT

Year Built: 2006

Model: Bow Rider

Price: \$39,900 USD

Location: United States

LOA: 24' 9" (7.54mm)

Beam: 8.5

Min Draft: 1' 6" (0.46mm)

Max Draft: 3' 1" (0.94mm)

Our experienced yacht broker, Andrey Shestakov, will help you choose and buy a yacht that best suits your needs 2006 Cobalt 24 SX — COBALT from our catalogue. Presently, at Shestakov Yacht Sales Inc., we have a wide variety of yachts available on our sale's list. We also work in close contact with all the big yacht manufacturers from all over the world.

If you would like to buy a yacht 2006 Cobalt 24 SX — COBALT or would like help answering any questions concerning purchasing, selling or chartering a yacht, please call +1(954)274-4435

TABLE OF CONTENTS

TABLE OF CONTENTS	2
SPECIFICATIONS	4
Overview	4
Basic Information	4
Dimensions	5
Speed, Capacities and Weight	5
Accommodations	5
Hull and Deck Information	5
Engine Information	5
PHOTOS	6
P_004	6
P_005	6
P_006	6
P_007	6
P_008	6
P_009	6
P_010	7
P_011	7
P_012	7
P_013	7
P_014	7
P_015	7
P_016	8
P_017	8
P_018	8
P_019	8
P_020	8
P_021	8

P_022	9
P_023	9
P_024	9
P_025	9
P_026	9
P_027	9
P_028	10
P_029	10
P_030	10
P_031	10
P_032	10
P_033	10
P_034	11
P_035	11
P_036	11
P_037	11
P_038	11
P_039	11
P_040	12
P_041	12
CONTACTS	13
Contact details	13
Telephones	13
Office hours	13
Address	13

SPECIFICATIONS

Overview

2006 Cobalt 24 SX Volvo 8.1 Gi 375HP w/ 485 hours ShoreLand'r trailer "X" as in "crossover."

The best of both worlds of runabouts and deck boats. As a runabout you have the Deep Vee hull and amenities such as; a sun pad of generous proportions, a spacious changing room with porta-potty, a swim platform, a raked European windshield with the wider cockpit, a wide-open center console set next to a high-traffic starboard walk-thru. Crossover now to the 24SX's deck boat sensibilities; a reversible passenger seat at the helm with a quick and comfortable fore/aft about-face, an optional bow entry ladder stashed next to the anchor, aft-aimed speakers in the bow, massive engine access, and Bimini top to escape the afternoon sun

- Boat extremely well-maintained including winterization and shrink wrap every year of ownership
- Within the last two years all periodic maintenance including; replace battery switch, new starter, new alternator, tuned and balanced dual stainless-steel props, new gimbal bearings and universal joints, new steering rack, new belts, tuned and water tested July 2023, current registrations for boat and trailer

Volvo Penta 8.1 GI DP / Gas / 375hp / 4,455 lb / Min Draft – 1ft 6 in Seating Capacity – 15 / Fuel Tank – 50 gal / 480 hours on boat and engine

Stainless steel counter rotating props – tuned and balanced Extended swim platform with ladder Bimini top Snap on bow and cockpit cover Full mooring cover Dual 1000 amp batteries with new battery switch Lots of storage underneath seats Changing room with porta potty Front anchor locker Pop up ski tow Upgraded stereo with 6 speakers and blue tooth capability Matching tandem twin axle trailer included with new wiring, brakes, surge protector

Basic Information

Category: Bow Rider

Sub Category: Bow Rider

Model Year: 2006

Year Built: 2006

Country: United States

Dimensions

LOA: 24' 9" (7.54mm)

Beam: 8.5

Min Draft: 1' 6" (0.46mm)

Max Draft: 3' 1" (0.94mm)

Speed, Capacities and Weight

Fuel Capacity: 50 Gal Gallons

Accommodations

Total Heads: 1

Hull and Deck Information

Hull Material: Fiberglass

Engine Information

Engines: 1

Manufacturer: Volvo Penta

Engine Type: I/O

Fuel Type: Gas

PHOTOS

P_004



P_005



P_006



P_007



P_008



P_009



P_010



P_011



P_012



P_013



P_014



P_015



P_016



P_017



P_018



P_019



P_020



P_021



P_022



P_023



P_024



P_025



P_026



P_027



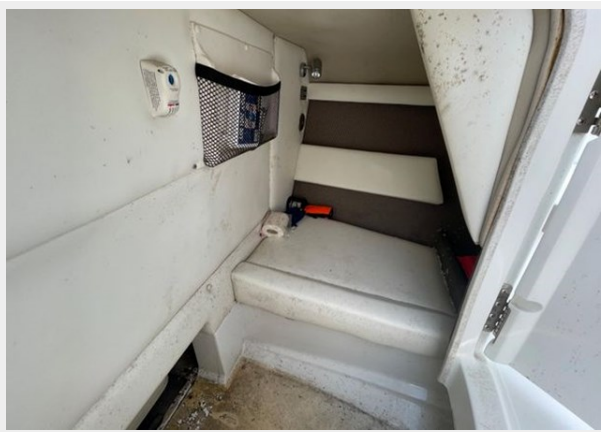
P_028



P_029



P_030



P_031



P_032



P_033



P_034



P_035



P_036



P_037



P_038



P_039



P_040



P_041



CONTACTS

Andrey Shestakov, leading yacht broker of the sales department of Shestakov Yacht Sales Inc. Shestakov Yacht Sales Inc., the official representative of the Miami/Fort Lauderdale FL headquarters.

Contact details

Email: andrey@shestakovyachtsales.com

Web: shestakovyachtsales.com/en/

Telephones

USA: +1(954)274-4435

Office hours

Monday – Saturday: **9:00 - 21:00** EDT

Sunday: **closed**

Address



Harbour Towne Marina, 850 NE 3rd St,
STE 213, Dania, FL 33004