

## MISS JAE — SEA RAY



**Builder:** SEA RAY

**Year Built:** 2007

**Model:** cruiser

**Price:** \$199,900 USD

**Location:** United States

**LOA:** 36' (10.97mm)

**Beam:** 13

**Cruise Speed:** 21 Knots Kts. (24 MPH)

Our experienced yacht broker, Andrey Shestakov, will help you choose and buy a yacht that best suits your needs **Miss Jae — SEA RAY** from our catalogue. Presently, at Shestakov Yacht Sales Inc., we have a wide variety of yachts available on our sale's list. We also work in close contact with all the big yacht manufacturers from all over the world.

If you would like to buy a yacht **Miss Jae — SEA RAY** or would like help answering any questions concerning purchasing, selling or chartering a yacht, please call **+1(954)274-4435**

---

# TABLE OF CONTENTS

---

TABLE OF CONTENTS	2
SPECIFICATIONS	5
Overview	5
Basic Information	6
Dimensions	6
Speed, Capacities and Weight	6
Accommodations	6
Hull and Deck Information	6
Engine Information	6
PHOTOS	7
2	7
3	7
4	7
5	7
6	7
7	7
8	8
9	8
10	8
11	8
12	8
13	8
14	9
15	9
17	9
16	9
18	9
19	9

---

20	10
21	10
22	10
23	10
25	10
24	10
26	11
27	11
28	11
29	11
30	11
31	11
33	12
32	12
34	12
35	12
36	12
37	12
38	13
39	13
40	13
41	13
43	13
42	13
44	14
45	14
47	14
46	14
48	14

---

---

49	14
50	15
CONTACTS	16
Contact details	16
Telephones	16
Office hours	16
Address	16

---

# SPECIFICATIONS

---

## Overview

---

36 Sea Ray Sedan Bridge / Cummins Diesels / Bow and Stern Thrusters/ Genset

This is an exceptional Sea Ray 360 Sedan Bridge. Everything about this beauty is designed with extended voyages in mind, including its outstanding ride and sea-keeping abilities, open and airy cabin, and two well-appointed staterooms. While the captain takes command at the helm, guests will enjoy breathtaking views from the generous bridge seating. In comfort as well as style, the 36 Sedan Bridge will transport you to distant harbors and back again.

**THIS BEAUTIFUL 36' SEA RAY SEDAN BRIDGE IS TRULY A MUST SEE! DON'T MISS THIS OPPORTUNITY!**

The Sea Ray Sedan Bridge is best known for her style and luxurious layout. She sits 18 ft, 6 inches above the water which allows for plenty of interior head room. On the beautiful arranged flybridge you will find 360 degree visibility and ample seating for your guests to enjoy the breath taking views while underway. A fixed Stairway leading to the bridge deck allows for safe easy access to the captain and the full Isinglass enclosure will protect you on those cold days on the water. The interior is loaded with amenities and features that are truly over the top! A large sofa and love seat offer plenty of room to sprawl out and relax. There is a full entertainment system equipped with a 20" flat screen LCD TV, DVD player, Clarion stereo system with a six disc CD changer, amplifier, subwoofer, digital cockpit remote and speaker selector switches. The dinette just forward of the salon on the starboard side has L- shaped seating with storage underneath that seats 4 comfortable. The port side galley has hardwood flooring, faux-granite countertops, under-counter stainless steel refrigerator and freezer units that operate on 12 or 120 volts, a two burner stove, microwave oven and coffeemaker. This galley rivals most upscale household kitchens.

There are 2 staterooms that provide plenty of room for overnighters and long range excursions. The guestroom has two bunks that convert into a queen size bed with plenty of storage underneath and a flat screen TV. The master stateroom features a centerline double berth with innerspring mattress, ample storage with two cedar lined closets and a flatscreen TV/DVD combo. The foot of the bed flips up to make a bench seat with additional storage underneath.

Powering this luxurious vessel is a pair of the Preferred Cummins QSB 380hp inboard diesels, runs excellent!

She is equipped with a 9.0 KW Onan Generator.

This 36' Sea Ray Sedan Bridge is truly the best on the market so don't miss this opportunity!

---

## Basic Information

---

**Category:** cruiser

**Sub Category:** Sedan Cruiser

**Model Year:** 2007

**Year Built:** 2007

**Country:** United States

---

## Dimensions

---

**LOA:** 36' (10.97m)

**Beam:** 13

---

## Speed, Capacities and Weight

---

**Cruise Speed:** 21 Knots Kts. (24 MPH)

---

## Accommodations

---

**Total Cabins:** 2

**Total Heads:** 1

---

## Hull and Deck Information

---

**Hull Material:** Fiberglass

---

## Engine Information

---

**Engines:** 2

**Manufacturer:** Cummins

**Engine Type:** Inboard

**Fuel Type:** Diesel

# PHOTOS

2



3



4



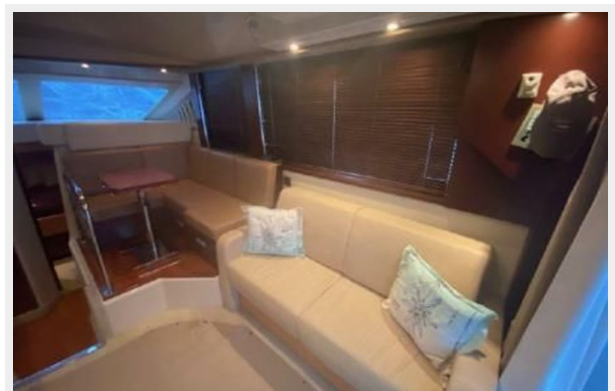
5



6



7



8



9



10



11



12

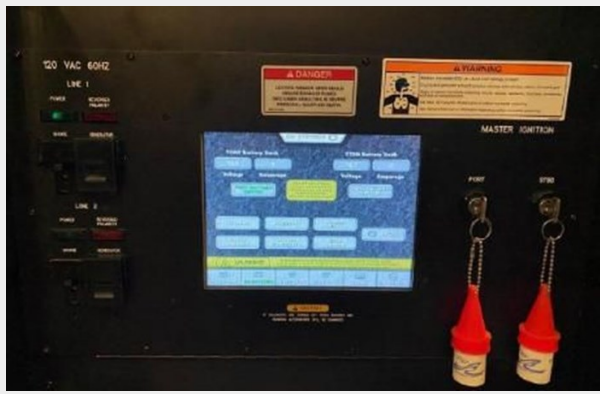


13





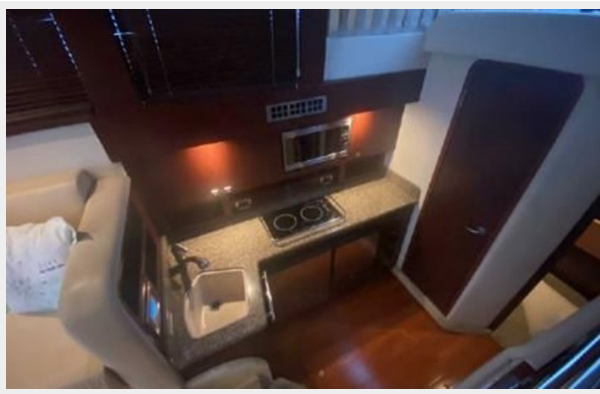
14



15



16



17



18



19



20



21



22



23



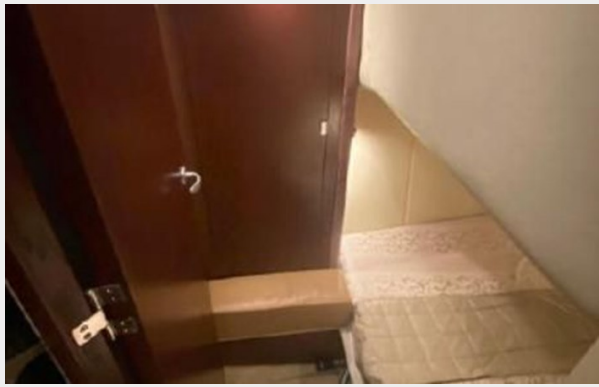
24



25



26



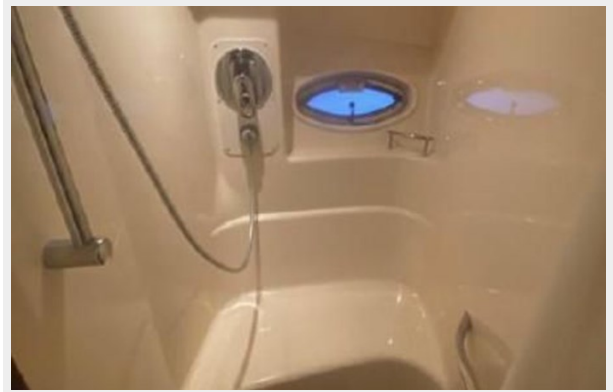
27



28



29



30



31



32



33



34



35



36



37



38



39



40



41



42



43



44



45



46



47



48



49



50



---

# CONTACTS

---

Andrey Shestakov, leading yacht broker of the sales department of Shestakov Yacht Sales Inc. Shestakov Yacht Sales Inc., the official representative of the Miami/Fort Lauderdale FL headquarters.

---

## Contact details

---

Email: [andrey@shestakovyachtsales.com](mailto:andrey@shestakovyachtsales.com)

Web: [shestakovyachtsales.com/en/](http://shestakovyachtsales.com/en/)

---

## Telephones

---

USA: +1(954)274-4435

---

## Office hours

---

Monday – Saturday: **9:00 - 21:00** EDT

Sunday: **closed**

---

## Address

---



Harbour Towne Marina, 850 NE 3rd St,  
STE 213, Dania, FL 33004