

# 2019 WELLCRAFT 242 FISHERMAN — WELLCRAFT



**Builder:** WELLCRAFT

**Year Built:** 2019

**Model:** center\_console

**Price:** \$79,900 USD

**Location:** United States

**LOA:** 24' 4" (7.42mm)

**Beam:** 8.5

**Min Draft:** 1' 4" (0.41mm)

Our experienced yacht broker, Andrey Shestakov, will help you choose and buy a yacht that best suits your needs 2019 Wellcraft 242 Fisherman — WELLCRAFT from our catalogue. Presently, at Shestakov Yacht Sales Inc., we have a wide variety of yachts available on our sale's list. We also work in close contact with all the big yacht manufacturers from all over the world.

If you would like to buy a yacht 2019 Wellcraft 242 Fisherman — WELLCRAFT or would like help answering any questions concerning purchasing, selling or chartering a yacht, please call +1(954)274-4435

# TABLE OF CONTENTS

TABLE OF CONTENTS	2
SPECIFICATIONS	5
Overview	5
Basic Information	5
Dimensions	5
Speed, Capacities and Weight	5
Accommodations	5
Hull and Deck Information	5
Engine Information	6
PHOTOS	7
P_004	7
P_005	7
P_006	7
P_007	7
P_008	7
P_009	7
P_010	8
P_011	8
P_012	8
P_013	8
P_014	8
P_015	8
P_016	9
P_017	9
P_018	9
P_019	9
P_020	9
P_021	9

---

P_022	10
P_023	10
P_024	10
P_025	10
P_026	10
P_027	10
P_028	11
P_029	11
P_030	11
P_031	11
P_032	11
P_033	11
P_034	12
P_035	12
P_036	12
P_037	12
P_038	12
P_039	12
P_040	13
P_041	13
P_042	13
P_043	13
P_044	13
P_045	13
P_046	14
P_047	14
P_048	14
P_049	14
P_050	14

---

---

P_051	14
P_052	15
P_053	15
P_054	15
P_055	15
P_056	15
P_057	15
P_058	16
P_059	16
P_060	16
P_061	16
CONTACTS	17
Contact details	17
Telephones	17
Office hours	17
Address	17

---

# SPECIFICATIONS

---

## Overview

---

Discover this singularly owned 2019 Wellcraft 242 Fisherman center console. Featuring a 300hp Evinrude E Tech with just 359 hours. Amenities include Simrad GPS with depth finder, windlass, fusion stereo with Bluetooth capability, multiple rod holders and spacious head. Her Venture trailer, Coast Guard Package, lines, bumpers and assorted gear are included making her well suited to get a jump on any season.

## Basic Information

---

**Category:** center\_console

**Sub Category:** Center Console

**Model Year:** 2019

**Year Built:** 2019

**Country:** United States

## Dimensions

---

**LOA:** 24' 4" (7.42mm)

**Beam:** 8.5

**Min Draft:** 1' 4" (0.41mm)

## Speed, Capacities and Weight

---

**Fuel Capacity:** 158 Gal Gallons

## Accommodations

---

**Total Heads:** 1

## Hull and Deck Information

---

**Hull Material:** Fiberglass

---

## Engine Information

---

**Engines:** 1

**Manufacturer:** Evinrude

**Engine Type:** Outboard

**Fuel Type:** Gas

# PHOTOS

P\_004



P\_005



P\_006



P\_007



P\_008



P\_009



P\_010



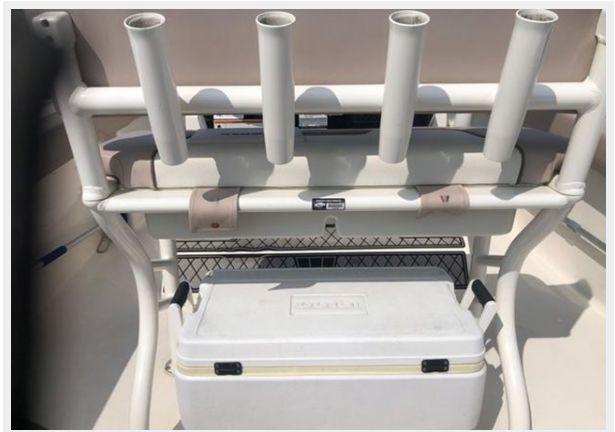
P\_011



P\_012



P\_013



P\_014



P\_015





P\_016



P\_017



P\_018



P\_019



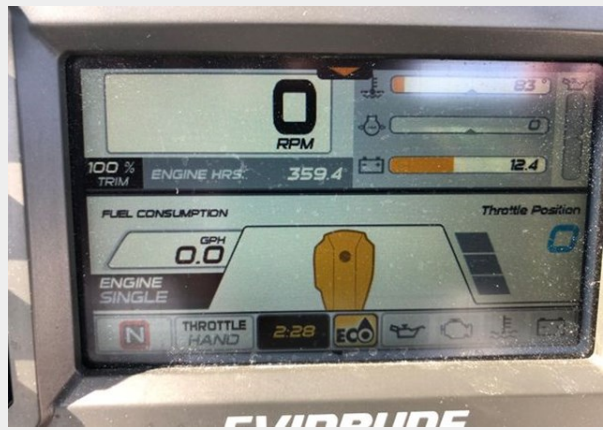
P\_020



P\_021



P\_022



P\_023



P\_024



P\_025



P\_026



P\_027



P\_028



P\_029



P\_030



P\_031



P\_032



P\_033



P\_034



P\_035



P\_036



P\_037



P\_038



P\_039



P\_040



P\_041



P\_042



P\_043



P\_044



P\_045



P\_046



P\_047



P\_048



P\_049



P\_050



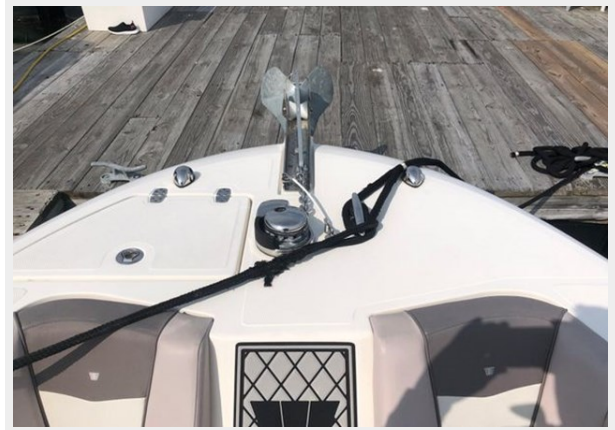
P\_051



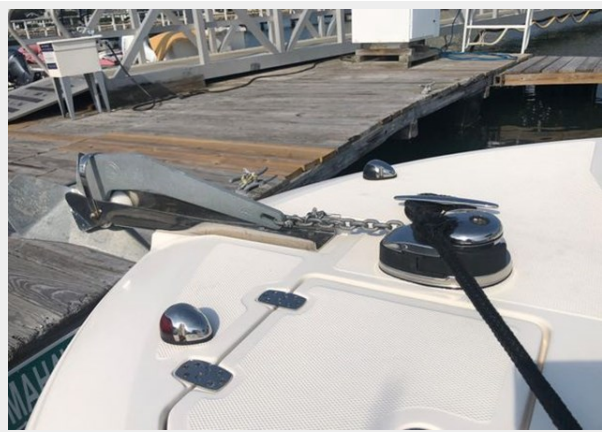
P\_052



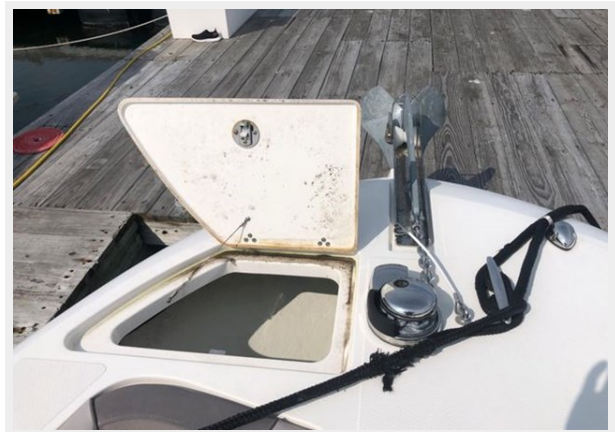
P\_053



P\_054



P\_055



P\_056



P\_057



P\_058



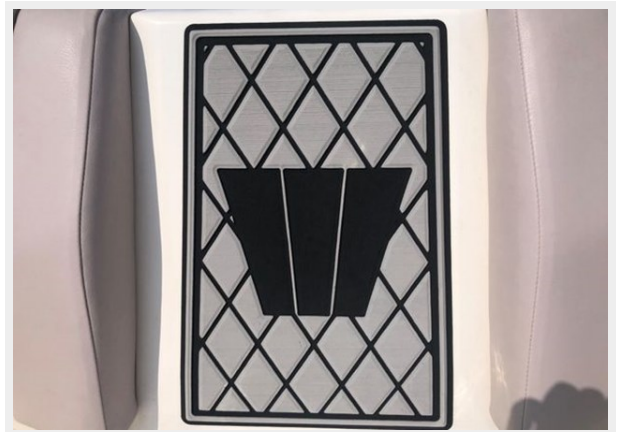
P\_059



P\_060



P\_061





# CONTACTS

---

Andrey Shestakov, leading yacht broker of the sales department of Shestakov Yacht Sales Inc. Shestakov Yacht Sales Inc., the official representative of the Miami/Fort Lauderdale FL headquarters.

## Contact details

---

Email: [andrey@shestakovyachtsales.com](mailto:andrey@shestakovyachtsales.com)

Web: [shestakovyachtsales.com/en/](http://shestakovyachtsales.com/en/)

## Telephones

---

USA: +1(954)274-4435

## Office hours

---

Monday – Saturday: **9:00 - 21:00** EDT

Sunday: **closed**

## Address

---



Harbour Towne Marina, 850 NE 3rd St,  
STE 213, Dania, FL 33004