

## MULAN — SUNREEF



**Builder:** [SUNREEF](#)

**LOA:** 71' 5" (21.77m)

**Year Built:** 2012

**Beam:** 33.16

**Model:** Catamaran

**Price:** \$1,999,000 USD

**Location:** United States

Our experienced yacht broker, Andrey Shestakov, will help you choose and buy a yacht that best suits your needs **Mulan — SUNREEF** from our catalogue. Presently, at Shestakov Yacht Sales Inc., we have a wide variety of yachts available on our sale's list. We also work in close contact with all the big yacht manufacturers from all over the world.

If you would like to buy a yacht **Mulan — SUNREEF** or would like help answering any questions concerning purchasing, selling or chartering a yacht, please call **+1(954)274-4435**

---

# TABLE OF CONTENTS

---

TABLE OF CONTENTS	2
SPECIFICATIONS	4
Overview	4
Basic Information	6
Dimensions	7
Speed, Capacities and Weight	7
Accommodations	7
Hull and Deck Information	7
Engine Information	7
PHOTOS	8
P_096	8
P_097	8
P_099	8
P_098	8
P_100	8
P_101	8
P_102	9
P_103	9
P_105	9
P_104	9
P_106	9
P_107	9
P_108	10
P_109	10
P_110	10
P_111	10
P_112	10
P_113	10

---

P_114	11
P_115	11
P_117	11
P_116	11
P_118	11
P_119	11
P_120	12
<b>CONTACTS</b>	<b>13</b>
Contact details	13
Telephones	13
Office hours	13
Address	13

---

# SPECIFICATIONS

---

## Overview

---

Introducing Mulan, a 70ft 2012 Sunreef catamaran that seamlessly combines contemporary style with unmatched functionality. Priced competitively, she offers exceptional value for those eyeing a turnkey charter operation before the new year.

This lightly used, two-owner vessel features a 5-cabin layout, including a spacious owner's suite on the starboard side. With transferable slip rights, Mulan is ready for immediate ownership. The current owner has invested heavily in a recent facelift, ensuring all systems are in working order.

Fully equipped with essential features, Mulan includes bow thrusters, A/C Gen, water-maker, teak decks, solar, and more. The exterior showcases new upholstery, and amenities range from a wine fridge to a dive compressor. Dive into luxury living—Your next floating vacation home in beautiful Honolulu.

## Galley

Galley Up

## Deck & Equipment

- Bow pulpits with integrated teak seats
- Gangway
- Lewmar port lights
- Swim ladder on the skirts
- Hull side ladder in bow Winches
- Blocks and jammers
- Genoa manual furler
- Deck light
- Electric lifting system for the dinghy with extendable arms and remote controller
- Hatch at the top of the stairway between cockpit and flybridge
- Fresh water hose retrieval & storage system with spray nozzle in chain locker
- 2 fresh water outlets at the bottom of the mast and in the cockpit Main sail electric winch
- Bimini on the flybridge (stainless steel)
- 2 additional lights for the flybridge + separate switch
- 4 extra waterproof speakers in the cockpit and flybridge by BOSE
- LEDs on the skirts, cockpit and flybridge
- 2 hand showers on deck

## Electronics & Navigation

- Compass (size 135 mm)
- Chronometer and barometer
- Furuno TZTL12F 12" GPS Navigation Plotter Touch Screen (Flybridge/saloon)
- Furuno CH300 85/215HZ Dual Freq Sonar (Flybridge/Saloon)
- Furuno NAVPILOT 700 Autopilot (Flybridge/Saloon)
- Furuno F1501 WIND INDICATOR (Flybridge/Saloon)
- Furuno FI503 TRIDATA (Flybridge/Saloon)
- Furuno DFF1 DIGITAL FISHFINDER (Flybridge/Saloon)
- Furuno DRS4D 4KW UHD RADAR DOME 24" (Mast)
- Furuno FA50 AIS CLASS B TRANSPONDER/RECEIVER (saloon)
- Furuno HS-2721 VHF with DSC function
- All navigation lighting LED
- WiFi extender
- Fishfinder
- STARLINK VOIP system
- 2 x TVs Main Salon /Master Cabin

### Electrical, Power & Plumbing

- AC-230V: Main panel extension, 3 chargers (24V/100A), Inverter (24V/5000W), two 230V sockets in cabins, additional sockets in saloon galley
- DC-24V: Main panel extension, Battery monitoring, 12 house batteries (24 V/1200Ah), starting batteries
- 110V shore connection kit
- 2x Generator 19KW 220V 50HZ (Hours: approx. 1188 each)
- 2x 350W Wind Generator (Superwind) Ultra quiet
- 4x solar power 140W (560W total)
- Fresh water: 2x 750L equipped with level indicators, 2 pressurized pumps), 2 water heaters of 80L each
- Black water: 2x 137L with discharge system, 2 electric pumps with automatic discharge equipped with 3 way valves (discharge in the sea or holding tanks)
- 4 electric bilge pumps
- 2 manual bilge pumps
- 2 hand showers on deck
- Watermaker 220L/h - 220V (Sea Recovery Aquawhisper reverse)
- Electric 24V toilets in bathrooms with freshwater flush
- Air conditioning 72 000 BTU (Marine Air MCGVLP)
- UV sterilizers in AC air handlers
- Freshwater Deck-wash system 24v

### Engine & Mechanical

- 2 x Yanmar 6B Y2-26 Engine Horsepower: 260 Engine hours approx. 1485 each 2x Yanmar KMH50A gearbox

2023: Brand new turbos with new turbo elbow, new V-clamps, new hoses (double clamped); New engine water pumps with new hoses, double-clamped, maintained to specifications.

- Stainless steel shafts
- 2 x engine speed controls (one at the navigation table and one on the flybridge)
- 2 x electric pump + 1 manual for fuel tanks
- 2 x JABSCO 23870-1300 9GPM 24V Diesel Fuel Transfer Pump
- Lights in the engine rooms
- Consumption estimation system (Yanmar Digital engine displays)
- 2x electric bow thrusters (by Max Power CT225, bow thruster 250 mm 440kg thrust)
- 2x 3000L fuel tanks

## Sails & Rigging

- Carbon mast with incorporated LEDs
- Carbon boom
- Plastic protection on the shrouds
- Lazy jack
- All sails in good condition
- Complete gear for gennaker
- Electric furling system for genoa
- 3 x harken Electric winches, 2 x manual
- Rigging inspected Nov 2022, Full survey available
- Main Halyard replaced 2022

## Additional Information

- Victron Quattro 24v /5000/120amp inverter that supplies separate outlets in the cabins and galley.
- All hatches re-sealed
- 12 NEW house bank batteries 2023
- Both freshwater pumps rebuilt
- Added a 110v system via converter array.
- Tender Included: Wilson Diesel Jet 445 in like new condition

## Basic Information

---

**Category:** Catamaran

**Model Year:** 2012

**Year Built:** 2012

**Country:** United States

---

## Dimensions

---

**LOA:** 71' 5" (21.77mm)

**Beam:** 33.16

---

## Speed, Capacities and Weight

---

**Water Capacity:** 198 Gallons

**Fuel Capacity:** 793 Gal Gallons

---

## Accommodations

---

**Total Cabins:** 5

**Total Heads:** 5

---

## Hull and Deck Information

---

**Hull Material:** Fiberglass

**Hull Configuration:** Catamaran

---

## Engine Information

---

**Engines:** 2

**Manufacturer:** Yanmar

**Engine Type:** Inboard

**Fuel Type:** Diesel

# PHOTOS

P\_096



P\_097



P\_098



P\_099



P\_100

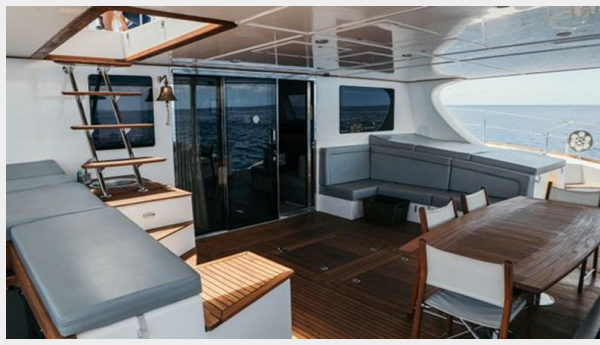


P\_101





P\_102



P\_103



P\_104



P\_105



P\_106



P\_107



P\_108



P\_109



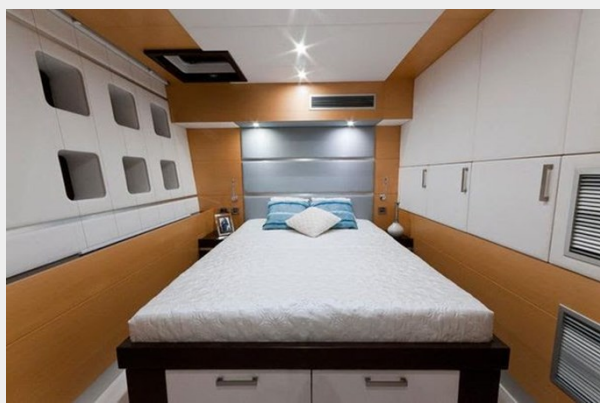
P\_110



P\_111



P\_112



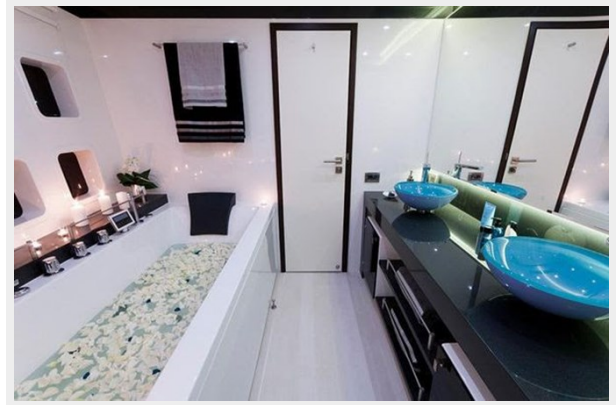
P\_113



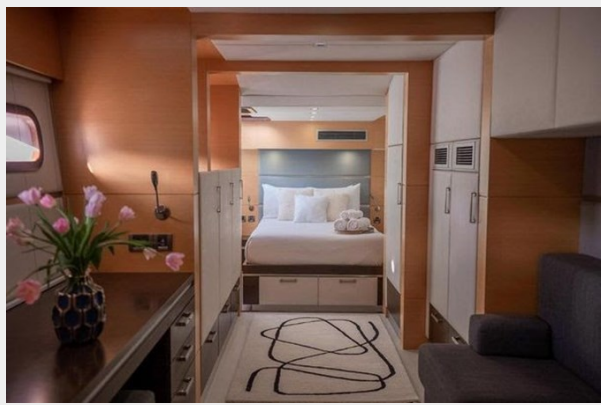
P\_114



P\_115



P\_116



P\_117



P\_118



P\_119



P\_120



# CONTACTS

---

Andrey Shestakov, leading yacht broker of the sales department of Shestakov Yacht Sales Inc. Shestakov Yacht Sales Inc., the official representative of the Miami/Fort Lauderdale FL headquarters.

## Contact details

---

Email: [andrey@shestakovyachtsales.com](mailto:andrey@shestakovyachtsales.com)

Web: [shestakovyachtsales.com/en/](http://shestakovyachtsales.com/en/)

## Telephones

---

USA: +1(954)274-4435

## Office hours

---

Monday – Saturday: **9:00 - 21:00** EDT

Sunday: **closed**

## Address

---



Harbour Towne Marina, 850 NE 3rd St,  
STE 213, Dania, FL 33004