

MULAN — SUNREEF



Судостроитель: SUNREEF

Год постройки: 2012

Модель: Катамаран

Цена: \$1,999,000 USD

Местонахождение: United States

Длина общая: 71' 5" (21.77mm)

Ширина: 33.16

Купить **Mulan — SUNREEF** а также выбрать подходящую вам яхту из нашего каталога яхт вам поможет опытный яхтенный брокер Андрей Шестаков. На сегодняшний день компания **Shestakov Yacht Sales Inc.** имеет большое количество яхт в собственном списке продаж, а также тесно сотрудничает со всеми крупными яхтенными производителями по всему миру.

Для того чтобы купить яхту **Mulan — SUNREEF** а также проконсультироваться по любому вопросу связанному с покупкой, продажей, чартером яхт позвоните по телефону **+7(918)465-66-44**.

ОГЛАВЛЕНИЕ

ОГЛАВЛЕНИЕ	2
ХАРАКТЕРИСТИКИ	4
Обзор	4
Основная информация	6
Размеры	7
Скорость, вместимость и масса	7
Размещение	7
Корпус и палуба	7
Информация о двигателе	7
ФОТОГРАФИИ	8
P_096	8
P_097	8
P_099	8
P_098	8
P_100	8
P_101	8
P_102	9
P_103	9
P_105	9
P_104	9
P_106	9
P_107	9
P_108	10
P_109	10
P_110	10
P_111	10
P_112	10
P_113	10

P_114	11
P_115	11
P_117	11
P_116	11
P_118	11
P_119	11
P_120	12
КОНТАКТЫ	13
Контактная информация	13
Телефоны	13
Время работы	13
Адрес	13

ХАРАКТЕРИСТИКИ

Обзор

Introducing Mulan, a 70ft 2012 Sunreef catamaran that seamlessly combines contemporary style with unmatched functionality. Priced competitively, she offers exceptional value for those eyeing a turnkey charter operation before the new year.

This lightly used, two-owner vessel features a 5-cabin layout, including a spacious owner's suite on the starboard side. With transferable slip rights, Mulan is ready for immediate ownership. The current owner has invested heavily in a recent facelift, ensuring all systems are in working order.

Fully equipped with essential features, Mulan includes bow thrusters, A/C Gen, water-maker, teak decks, solar, and more. The exterior showcases new upholstery, and amenities range from a wine fridge to a dive compressor. Dive into luxury living—Your next floating vacation home in beautiful Honolulu.

Galley

Galley Up

Deck & Equipment

- Bow pulpits with integrated teak seats
- Gangway
- Lewmar port lights
- Swim ladder on the skirts
- Hull side ladder in bow Winches
- Blocks and jammers
- Genoa manual furler
- Deck light
- Electric lifting system for the dinghy with extendable arms and remote controller
- Hatch at the top of the stairway between cockpit and flybridge
- Fresh water hose retrieval & storage system with spray nozzle in chain locker
- 2 fresh water outlets at the bottom of the mast and in the cockpit Main sail electric winch
- Bimini on the flybridge (stainless steel)
- 2 additional lights for the flybridge + separate switch
- 4 extra waterproof speakers in the cockpit and flybridge by BOSE
- LEDs on the skirts, cockpit and flybridge
- 2 hand showers on deck

Electronics & Navigation

- Compass (size 135 mm)
- Chronometer and barometer
- Furuno TZTL12F 12" GPS Navigation Plotter Touch Screen (Flybridge/saloon)
- Furuno CH300 85/215HZ Dual Freq Sonar (Flybridge/Saloon)
- Furuno NAVPILOT 700 Autopilot (Flybridge/Saloon)
- Furuno F1501 WIND INDICATOR (Flybridge/Saloon)
- Furuno FI503 TRIDATA (Flybridge/Saloon)
- Furuno DFF1 DIGITAL FISHFINDER (Flybridge/Saloon)
- Furuno DRS4D 4KW UHD RADAR DOME 24" (Mast)
- Furuno FA50 AIS CLASS B TRANSPONDER/RECEIVER (saloon)
- Furuno HS-2721 VHF with DSC function
- All navigation lighting LED
- WiFi extender
- Fishfinder
- STARLINK VOIP system
- 2 x TVs Main Salon /Master Cabin

Electrical, Power & Plumbing

- AC-230V: Main panel extension, 3 chargers (24V/100A), Inverter (24V/5000W), two 230V sockets in cabins, additional sockets in saloon galley
- DC-24V: Main panel extension, Battery monitoring, 12 house batteries (24 V/1200Ah), starting batteries
- 110V shore connection kit
- 2x Generator 19KW 220V 50HZ (Hours: approx. 1188 each)
- 2x 350W Wind Generator (Superwind) Ultra quiet
- 4x solar power 140W (560W total)
- Fresh water: 2x 750L equipped with level indicators, 2 pressurized pumps), 2 water heaters of 80L each
- Black water: 2x 137L with discharge system, 2 electric pumps with automatic discharge equipped with 3 way valves (discharge in the sea or holding tanks)
- 4 electric bilge pumps
- 2 manual bilge pumps
- 2 hand showers on deck
- Watermaker 220L/h - 220V (Sea Recovery Aquawhisper reverse)
- Electric 24V toilets in bathrooms with freshwater flush
- Air conditioning 72 000 BTU (Marine Air MCGVLP)
- UV sterilizers in AC air handlers
- Freshwater Deck-wash system 24v

Engine & Mechanical

- 2 x Yanmar 6B Y2-26 Engine Horsepower: 260 Engine hours approx. 1485 each 2x Yanmar KMH50A gearbox

2023: Brand new turbos with new turbo elbow, new V-clamps, new hoses (double clamped); New engine water pumps with new hoses, double-clamped, maintained to specifications.

- Stainless steel shafts
- 2 x engine speed controls (one at the navigation table and one on the flybridge)
- 2 x electric pump + 1 manual for fuel tanks
- 2 x JABSCO 23870-1300 9GPM 24V Diesel Fuel Transfer Pump
- Lights in the engine rooms
- Consumption estimation system (Yanmar Digital engine displays)
- 2x electric bow thrusters (by Max Power CT225, bow thruster 250 mm 440kg thrust)
- 2x 3000L fuel tanks

Sails & Rigging

- Carbon mast with incorporated LEDs
- Carbon boom
- Plastic protection on the shrouds
- Lazy jack
- All sails in good condition
- Complete gear for gennaker
- Electric furling system for genoa
- 3 x harken Electric winches, 2 x manual
- Rigging inspected Nov 2022, Full survey available
- Main Halyard replaced 2022

Additional Information

- Victron Quattro 24v /5000/120amp inverter that supplies separate outlets in the cabins and galley.
- All hatches re-sealed
- 12 NEW house bank batteries 2023
- Both freshwater pumps rebuilt
- Added a 110v system via converter array.
- Tender Included: Wilson Diesel Jet 445 in like new condition

Основная информация

Тип судна: Катамаран

Модельный год: 2012

Год постройки: 2012

Страна: United States

Размеры

Длина общая: 71' 5" (21.77mm)

Ширина: 33.16

Скорость, вместимость и масса

Вместимость воды: 198 Gallons

Объем топливного бака: 793 Gal Gallons

Размещение

Всего кают: 5

Всего ком. состава: 5

Корпус и палуба

Материал корпуса: Fiberglass

Комплектация корпуса: Катамаран

Информация о двигателе

Двигатели: 2

Производитель: Yanmar

Тип двигателя: Inboard

Тип топлива: Diesel

ФОТОГРАФИИ

P_096



P_097



P_098



P_099



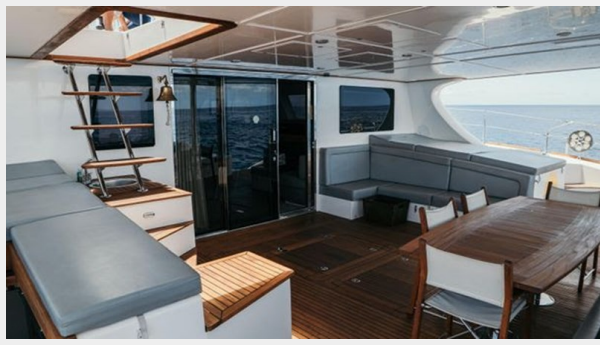
P_100



P_101



P_102



P_103



P_104



P_105



P_106



P_107



P_108



P_109



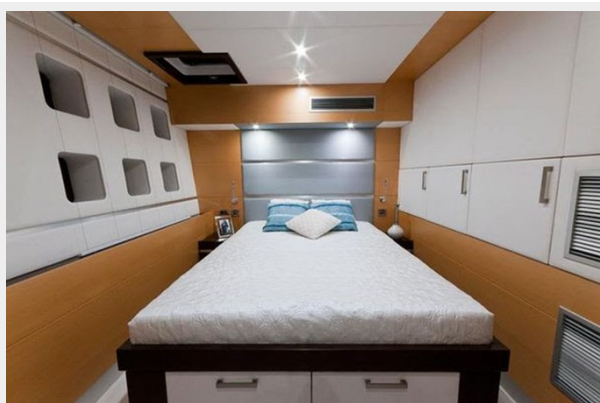
P_110



P_111



P_112



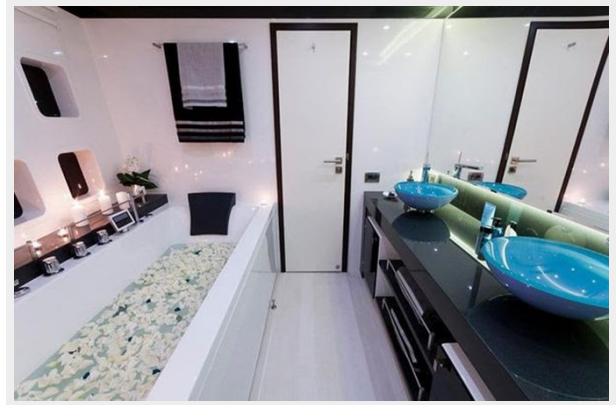
P_113



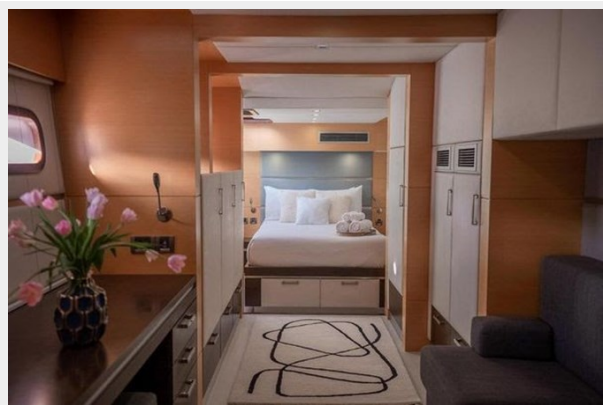
P_114



P_115



P_116



P_117



P_118



P_119



P_120



КОНТАКТЫ

Андрей Шестаков (Andrey Shestakov) – ведущий яхтенный брокер отдела продаж яхт и судов компании Shestakov Yacht Sales Inc. Официальный представитель Shestakov Yacht Sales Inc. для русскоговорящих клиентов в центральном офисе компании в Майами/Форт Лодердейл/Флорида/США.

Контактная информация

Email: andrey@shestakovyachtsales.com

Web: shestakovyachtsales.com

Телефоны

Краснодарский край: **+7(918)465-66-44**

США, Майами, Флорида: **+1(954)274-4435**

Время работы

Понедельник – Суббота: **9:00 - 21:00**
EDT

Воскресенье: **Закрито**

Адрес



Harbour Towne Marina, 850 NE 3rd St,
STE 213, Dania, FL 33004