

## TRUE NORTH — SUNREEF



**Builder:** SUNREEF

**Year Built:** 2020

**Model:** Catamaran

**Price:** \$8,899,999 USD

**Location:** United States

**LOA:** 81' 1" (24.71mm)

**Beam:** 37.66

**Max Draft:** 7' 2" (2.18mm)

**Cruise Speed:** 8 Knots Kts. (9 MPH)

**Max Speed:** 15 Knots Kts. (17 MPH)

Our experienced yacht broker, Andrey Shestakov, will help you choose and buy a yacht that best suits your needs **True North — SUNREEF** from our catalogue. Presently, at Shestakov Yacht Sales Inc., we have a wide variety of yachts available on our sale's list. We also work in close contact with all the big yacht manufacturers from all over the world.

If you would like to buy a yacht **True North — SUNREEF** or would like help answering any questions concerning purchasing, selling or chartering a yacht, please call **+1(954)274-4435**

# TABLE OF CONTENTS

TABLE OF CONTENTS	2
SPECIFICATIONS	4
Overview	4
Basic Information	4
Dimensions	4
Speed, Capacities and Weight	4
Accommodations	5
Hull and Deck Information	5
Engine Information	5
PHOTOS	6
P_071	6
P_072	6
P_073	6
P_074	6
P_075	6
P_076	6
P_077	7
P_078	7
P_079	7
P_080	7
P_081	7
P_082	7
P_083	7
P_084	7
P_085	8
P_086	8
P_087	8
P_088	8

P_089	8
CONTACTS	9
Contact details	9
Telephones	9
Office hours	9
Address	9

# SPECIFICATIONS

## Overview

2022 Sunreef 80 sailing True North was originally crafted with the intent of circumnavigation, designed to accommodate the entire family, and has exclusively served private purposes. Its galley-down configuration is ideally suited for prospective charter operations. Since the inception of True North, meticulous planning and attention to detail have guided every facet of its construction. The shipyard in Poland benefitted from the oversight of a dedicated third-party consultant throughout the entire building process. Comprehensive maintenance records have been diligently maintained and are available through Vessel Vanguard. The owner made a deliberate choice to outfit True North with the highest quality and most reputable equipment across all categories. This vessel stands as the most exquisitely equipped and impeccably maintained 80-foot sailing yacht currently available in the market. The next fortunate owner will receive exceptional value, free from the delays and challenges typically associated with the acquisition of a new vessel. True North is presently moored in West Palm Beach, poised for delivery well in advance of the upcoming year.

## Basic Information

Category: Catamaran	Model Year: 2020
Year Built: 2020	Country: United States

## Dimensions

LOA: 81' 1" (24.71mm)	Beam: 37.66
Max Draft: 7' 2" (2.18mm)	

## Speed, Capacities and Weight

Cruise Speed: 8 Knots Kts. (9 MPH)	Max Speed: 15 Knots Kts. (17 MPH)
Water Capacity: 211 Gallons	Fuel Capacity: 792 Gal Gallons

---

## Accommodations

---

**Total Cabins:** 7

**Total Berths:** 7

**Total Heads:** 6

---

## Hull and Deck Information

---

**Hull Material:** Fiberglass

**Hull Configuration:** Catamaran

---

## Engine Information

---

**Engines:** 2

**Manufacturer:** John Deere

**Engine Type:** Inboard

**Fuel Type:** Diesel

# PHOTOS

P\_071



P\_072



P\_073



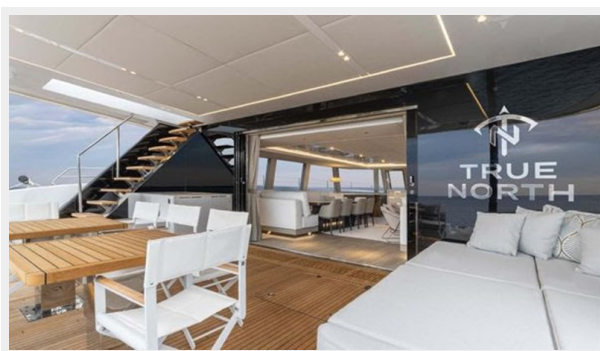
P\_074



P\_075



P\_076





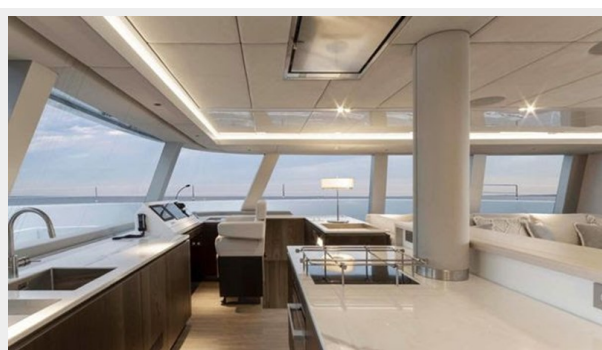
P\_077



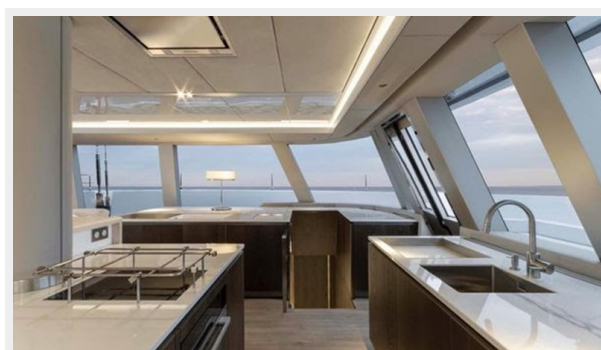
P\_078



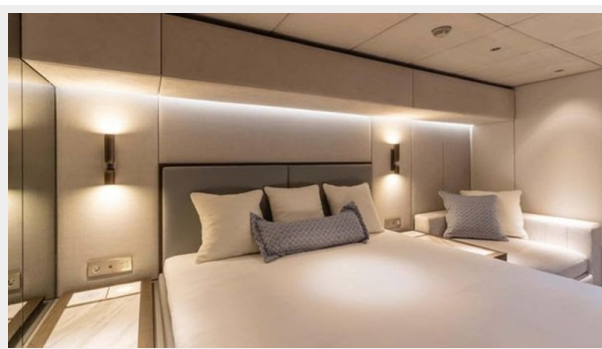
P\_079



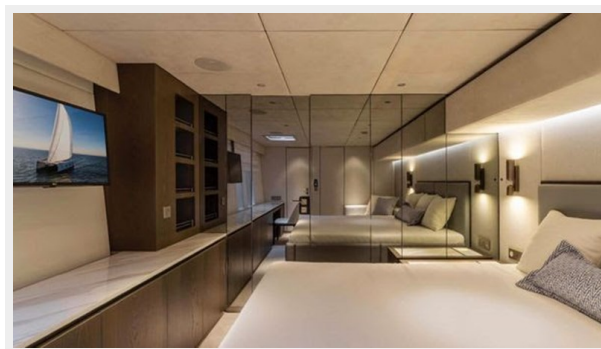
P\_080



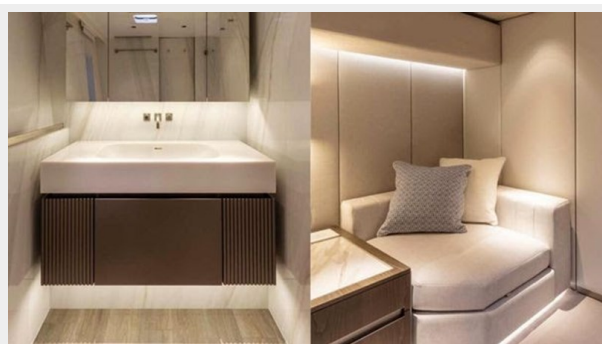
P\_081



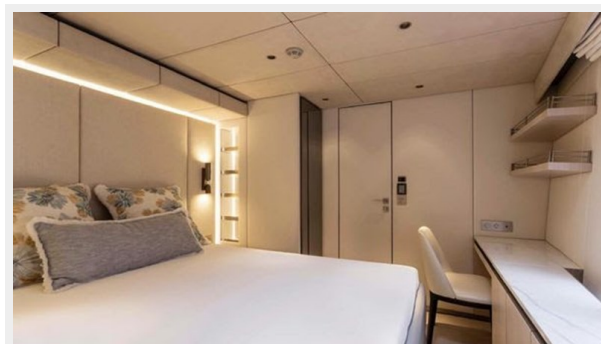
P\_082



P\_083



P\_084



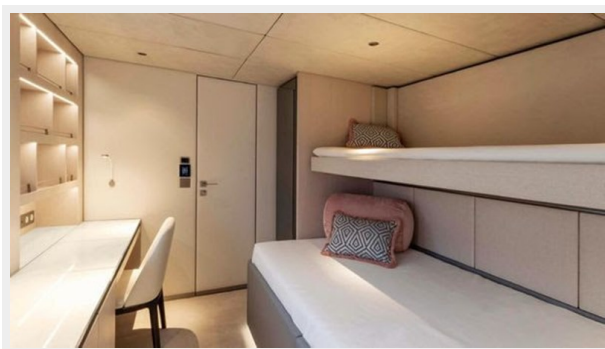
P\_085



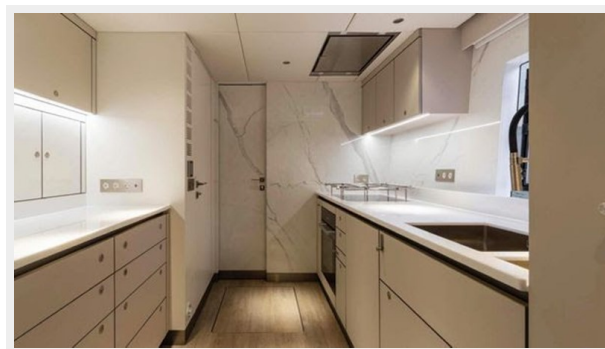
P\_086



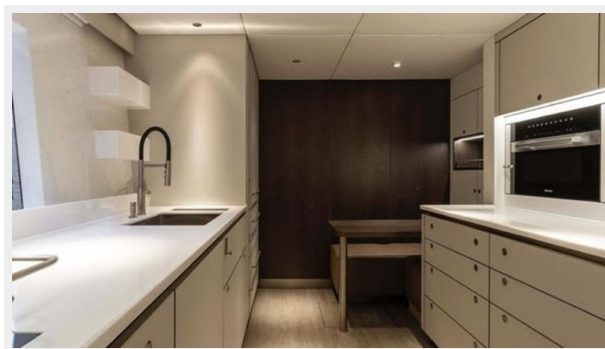
P\_087



P\_088



P\_089





# CONTACTS

---

Andrey Shestakov, leading yacht broker of the sales department of Shestakov Yacht Sales Inc. Shestakov Yacht Sales Inc., the official representative of the Miami/Fort Lauderdale FL headquarters.

## Contact details

---

Email: **andrey@shestakovyachtsales.com**

Web: [shestakovyachtsales.com/en/](http://shestakovyachtsales.com/en/)

## Telephones

---

USA: **+1(954)274-4435**

## Office hours

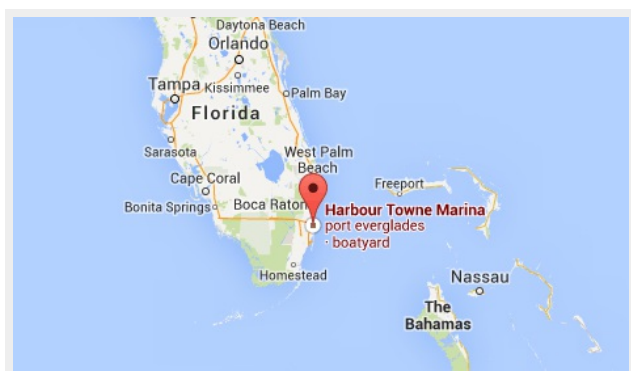
---

Monday – Saturday: **9:00 - 21:00 EDT**

Sunday: **closed**

## Address

---



Harbour Towne Marina, 850 NE 3rd St,  
STE 213, Dania, FL 33004