

2015 DUCKWORTH 28 OFFSHORE — DUCKWORTH



Builder: DUCKWORTH

LOA: 28' (8.53mm)

Year Built: 2015

Beam: 8.5

Model: Commercial Vessel

Price: PRICE ON APPLICATION

Location: United States

Our experienced yacht broker, Andrey Shestakov, will help you choose and buy a yacht that best suits your needs **2015 Duckworth 28 Offshore — DUCKWORTH** from our catalogue. Presently, at Shestakov Yacht Sales Inc., we have a wide variety of yachts available on our sale's list. We also work in close contact with all the big yacht manufacturers from all over the world.

If you would like to buy a yacht **2015 Duckworth 28 Offshore — DUCKWORTH** or would like help answering any questions concerning purchasing, selling or chartering a yacht, please call **+1(954)274-4435**

TABLE OF CONTENTS

TABLE OF CONTENTS	2
SPECIFICATIONS	3
Overview	3
Basic Information	3
Dimensions	4
Accommodations	4
Hull and Deck Information	4
Engine Information	4
PHOTOS	5
Looking Forward	5
Looking Aft	5
Galley	5
Salon	5
Salon Table	5
Salon Table	5
Forward Cabin	6
Exterior Looking Forward	6
Head	6
Helm	6
Exterior Looking Aft	6
CONTACTS	7
Contact details	7
Telephones	7
Office hours	7
Address	7

SPECIFICATIONS

Overview

Duckworth Offshore 28 One Owner; includes Trailer! For Sale by Waterline Boats Everett

Benefit from an immersive experience, featuring 3 Virtual Tours, 1 Video, and 122 photos, along with comprehensive specs and expert broker's commentary. All of this is available for the Duckworth Offshore 28! - Contact our Waterline Boats Broker! Length · 28'0" Year · 2015 Construction · Aluminium Underwater profile · Planing Sleeping berths · 3 Engine · 2 x gasoline 200hp, Evinrude E-Tec G1 (2014) Lying · Redmond, WA - Shown by Appointment Broker's Comments:

This 2015 Duckworth Offshore 28 was custom-ordered and built to the owner's exact expectations with many upgrades and custom touches. She is both a perfect fishing boat for avid fishers as well as a rescue and tow boat, and has been involved in many US Coast Guard Auxiliary events. She is equipped with twin 2014 Evinrude E-Tec G1 200 hp engines (full throttle 5300-6000RPM), a bow thruster, Evinrude i-Command gauges, a Lewmar ProFish 700 windlass, washdown systems forward and aft, a Lazarette locker which may double as a fish hold or storage, a full suite of Garmin electronics, a FLIR Camera, loud hailer, light bar, search lights, a custom-welded extended swim platform, a custom dive ladder and much more! The 2015 EZ triple axle loader (1250#) is included in the sale and equipped with a Hydrastar brake actuator and electric brake controller, new bunks, an electric hydraulic winch, and sway bars. To complete the package: the 2012 Ford Super Duty F-450 DRW 4WD Crewcab Lariat is also available for sale, separately (contact the broker for additional details). The truck is equipped with a 6.7L V8 diesel engine, 4-wheel ABS brakes, seating for five, and DVD entertainment screens for the back passengers while driving between destinations. She also has a Snug Canopy for the 8 ft bed. A Honda GX 200 hot water pressure washer on an extending rack system, with storage and shelving units attached, and 58 gallon water tank combine to create a very accessible solution to maintaining the boat free of corrosion and comply with State Clean Water laws by ridding the boat of any contaminants as you travel from fresh to salt water and state to state. She has been transported to fresh and salt water for leisure and work. Buy the entire package and you will be set with a well equipped, powerful workhorse, wherever your adventures might lead you!

Basic Information

Category: Commercial Vessel

Model Year: 2015

Year Built: 2015

Country: United States

Dimensions

LOA: 28' (8.53mm)

Beam: 8.5

Accommodations

Total Heads: 1

Hull and Deck Information

Hull Material: Aluminum

Hull Configuration: Planing

Engine Information

Engines: 2

Manufacturer: Evinrude

Engine Type: Outboard

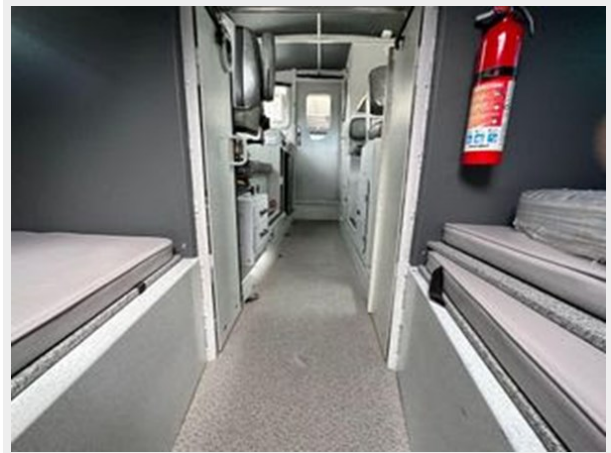
Fuel Type: Gas

PHOTOS

Looking Forward



Looking Aft



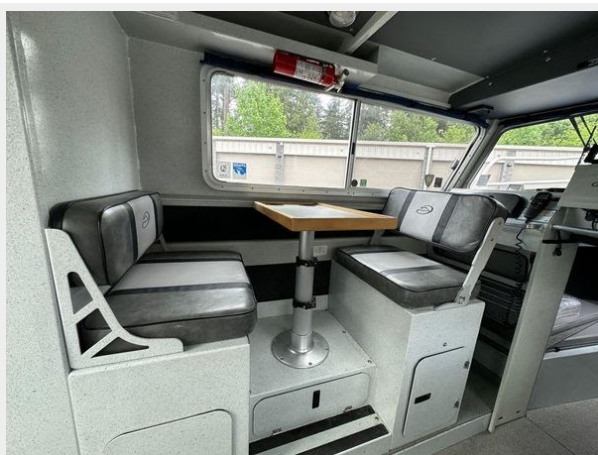
Galley



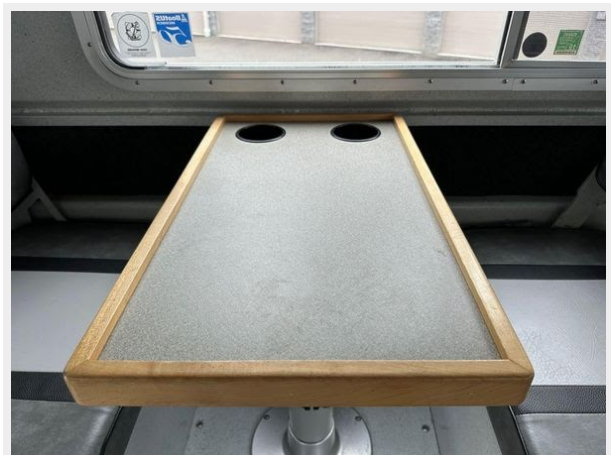
Salon



Salon Table



Salon Table



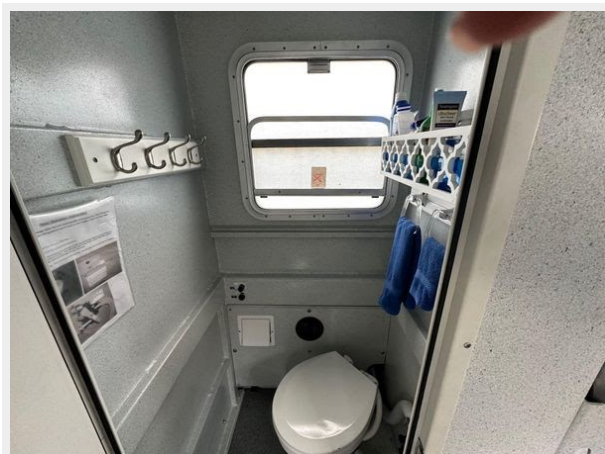
Forward Cabin



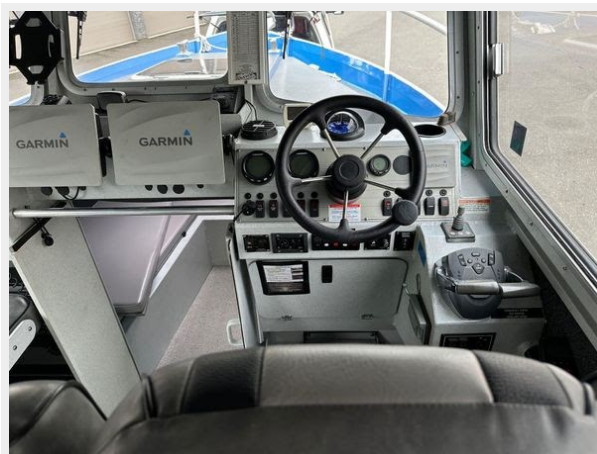
Exterior Looking Forward



Head



Helm



Exterior Looking Aft



CONTACTS

Andrey Shestakov, leading yacht broker of the sales department of Shestakov Yacht Sales Inc. Shestakov Yacht Sales Inc., the official representative of the Miami/Fort Lauderdale FL headquarters.

Contact details

Email: **andrey@shestakovyachtsales.com**

Web: shestakovyachtsales.com/en/

Telephones

USA: **+1(954)274-4435**

Office hours

Monday – Saturday: **9:00 - 21:00 EDT**

Sunday: **closed**

Address



Harbour Towne Marina, 850 NE 3rd St,
STE 213, Dania, FL 33004