

2000 BENETEAU 311 — BENETEAU



Builder: BENETEAU

LOA: 31' (9.45m)

Year Built: 2000

Beam: 10.5

Model: Cruising Sailboat

Price: PRICE ON APPLICATION

Location: United States

Our experienced yacht broker, Andrey Shestakov, will help you choose and buy a yacht that best suits your needs 2000 Beneteau 311 — BENETEAU from our catalogue. Presently, at Shestakov Yacht Sales Inc., we have a wide variety of yachts available on our sale's list. We also work in close contact with all the big yacht manufacturers from all over the world.

If you would like to buy a yacht 2000 Beneteau 311 — BENETEAU or would like help answering any questions concerning purchasing, selling or chartering a yacht, please call +1(954)274-4435

TABLE OF CONTENTS

TABLE OF CONTENTS	2
SPECIFICATIONS	3
Overview	3
Basic Information	3
Dimensions	3
Speed, Capacities and Weight	3
Accommodations	4
Hull and Deck Information	4
Engine Information	4
PHOTOS	5
Looking Forward	5
Looking Aft	5
Galley	5
Galley	5
Salon	5
Nav Station	5
Quarter Berth	6
Forward Cabin	6
Head	6
Helm	6
Cockpit	6
CONTACTS	7
Contact details	7
Telephones	7
Office hours	7
Address	7

SPECIFICATIONS

Overview

Beneteau 311 Fine Entry Level Cruiser!

For Sale by Waterline Boats Port Townsend

Benefit from an immersive experience, featuring 3 Virtual Tours, 1 Video, and 100 photos, along with comprehensive specs and expert broker's commentary. All of this is available for the Beneteau 311 - Contact our Waterline Boats Broker!

Boat REF# · 327020 Length · 31'0" Year · 2000 Construction · GRP Underwater profile · Fin and Bulb Sleeping berths · 6 Engine · 1 x diesel 20hp, 2GM 20F (2000) Lying · Port Ludlow, WA USA -- Shown by Appointment! Broker's Comments: This Beneteau 311 is clean inside and out, and she has a two cabin layout and accommodations suitable for cruising with 4 or more. This vessel is well configured for cruising in the Pacific Northwest. The main and jib were recently replaced in 2021 with new Taylor sails. The jib is roller furling and the main is configured with lazy-jacks and a stack pack for easy hoisting. Navigational electronics are complete and functional. Cabin heating is provided by an Espar forced air diesel heater.

Basic Information

Category: Cruising Sailboat

Model Year: 2000

Year Built: 2000

Country: United States

Dimensions

LOA: 31' (9.45m)

Beam: 10.5

Speed, Capacities and Weight

Water Capacity: 45 Gallons

Holding Tank: 15 Gal Gallons

Fuel Capacity: 18.5 Gal Gallons

Accommodations

Total Cabins: 2

Total Berths: 6

Total Heads: 1

Hull and Deck Information

Hull Material: GRP

Hull Configuration: Bulb Keel

Engine Information

Engines: 1

Manufacturer: Yanmar

Engine Type: Inboard

Fuel Type: Diesel

PHOTOS

Looking Forward



Looking Aft



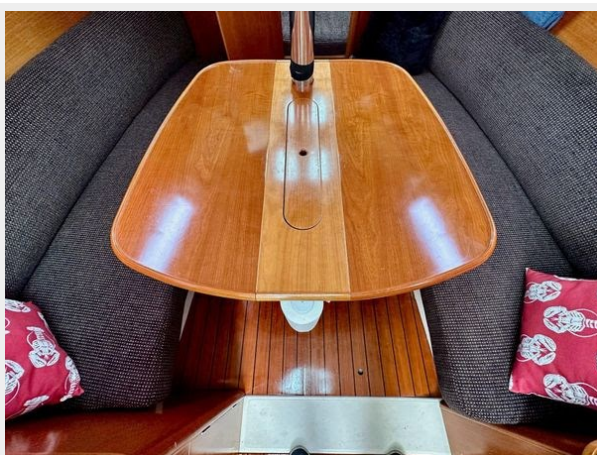
Galley



Galley



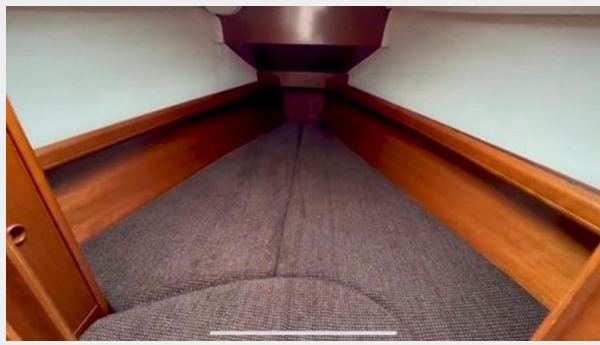
Salon



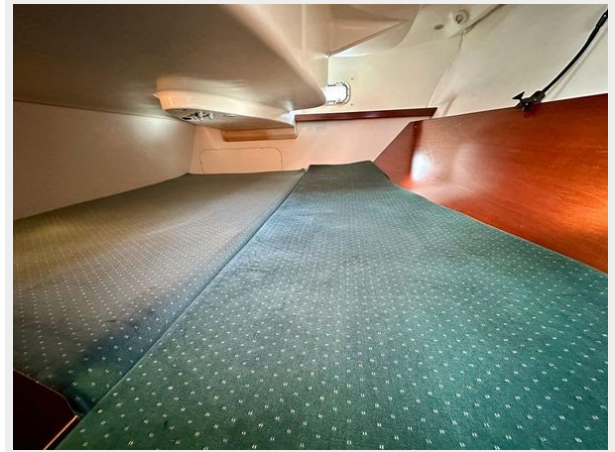
Nav Station



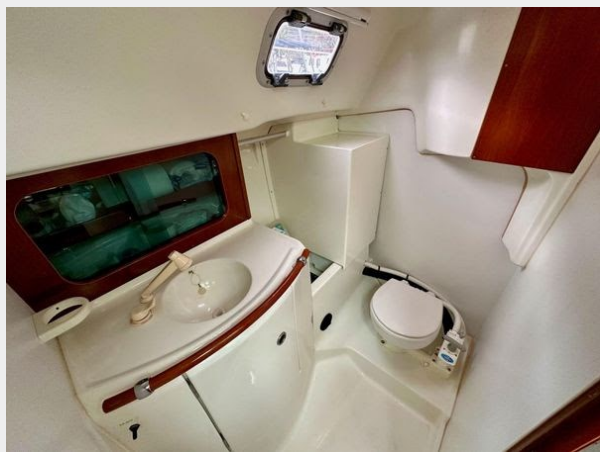
Forward Cabin



Quarter Berth



Head



Helm



Cockpit



CONTACTS

Andrey Shestakov, leading yacht broker of the sales department of Shestakov Yacht Sales Inc. Shestakov Yacht Sales Inc., the official representative of the Miami/Fort Lauderdale FL headquarters.

Contact details

Email: andrey@shestakovyachtsales.com

Web: shestakovyachtsales.com/en/

Telephones

USA: +1(954)274-4435

Office hours

Monday – Saturday: **9:00 - 21:00** EDT

Sunday: **closed**

Address



Harbour Towne Marina, 850 NE 3rd St,
STE 213, Dania, FL 33004