

2024 MCP MY 140 — MCP YACHTS



Builder: MCP YACHTS

Year Built: 2024

Model: Mega Yacht

Price: Price on Application

Location: United States

LOA: 143' (43.59m)

Beam: 27.33

Cruise Speed: 16 Knots Kts. (18 MPH)

Max Speed: 19 Knots Kts. (22 MPH)

Our experienced yacht broker, Andrey Shestakov, will help you choose and buy a yacht that best suits your needs **2024 MCP MY 140 — MCP YACHTS** from our catalogue. Presently, at Shestakov Yacht Sales Inc., we have a wide variety of yachts available on our sale's list. We also work in close contact with all the big yacht manufacturers from all over the world.

If you would like to buy a yacht **2024 MCP MY 140 — MCP YACHTS** or would like help answering any questions concerning purchasing, selling or chartering a yacht, please call **+1(954)274-4435**

TABLE OF CONTENTS

TABLE OF CONTENTS	2
SPECIFICATIONS	5
Overview	5
Basic Information	5
Dimensions	6
Speed, Capacities and Weight	6
Accommodations	6
Hull and Deck Information	6
Engine Information	6
PHOTOS	7
P_004	7
P_005	7
P_006	7
P_007	7
P_008	7
P_009	7
P_010	8
P_011	8
P_012	8
P_013	8
P_014	8
P_015	8
P_016	9
P_017	9
P_018	9
P_019	9
P_020	9
P_021	9

P_022	10
P_023	10
P_024	10
P_025	10
P_026	10
P_027	10
P_028	11
P_029	11
P_030	11
P_031	11
P_032	11
P_033	11
P_034	12
P_035	12
P_037	12
P_036	12
P_038	13
P_039	13
P_040	13
P_041	13
P_042	13
P_043	13
P_044	14
P_045	14
P_046	14
P_047	14
P_048	14
P_049	14
P_050	15

P_051	15
P_052	15
P_053	15
P_054	15
P_055	15
P_056	16
P_057	16
CONTACTS	17
Contact details	17
Telephones	17
Office hours	17
Address	17

SPECIFICATIONS

Overview

MCP Yachts MY 140 In a nutshell, the MCP MY 140 is the largest leisure boat produced in Latin America. And, in just one word, it can be defined as SPECTACULAR. Admired, photographed, filmed, recognized from a distance, but never equalled or compared to any other, because it is unique. The model Hemisphere MCP MY 140, or MCP MY 140, is one of those boats that has entered the select group of "celebrities" worldwide, not just because it has accumulated historic figures for Brazilian boating or because it is the largest leisure boat built in Latin America, which would already give it this credential, but because of its appearance and its size. When admiring the fluidity and elegance of the MCP MY 140's navigation, it's easy to forget that the boat is almost 44 meters long, has four decks and a displacement of 200 tons. In terms of accommodation and comfort, it is a very spacious boat inside, with the capacity to accommodate 12 passengers in 5 spacious cabins, 4 of which are large suites and 1 cabin with 4 bunk beds. The master suite is isolated and has total privacy. The interior was designed for a tall owner, so all the boat's ergonomics are based on the family's height. This is reflected even in the steps of the staircase, as well as in the spaciousness of the cabins, the height of the rooms, the dimensions (height) of the beds, the corridors, the bathrooms and the doors. The minimalist décor enhances the elegance of the vessel, which features fabrics and materials imported from Europe and the United States. The joinery is another highlight, with a classic and conservative aesthetic of walnut wood and radica. In contrast, glass is another material that is used a lot, resulting in a great balance in all the rooms. It comes with an illuminated glass spiral staircase that connects the main floor to the upper floor, a sauna, jacuzzi and generous outdoor decks that connect several different lounges, living and dining areas, ideal for relaxing and entertaining. The use of stainless steel in the internal fittings ensures a touch of modernity, which can be seen in the transition between rooms due to the special attention given to the large, well-lit spaces. Another interesting factor is that guests can enjoy the boat's space without encountering the crew, who use separate accesses. This semi-displacement aluminum ocean-going superyacht meets Lloyd's requirements and, thanks to its twin Caterpillar C32 1925 BHP engines, is capable of reaching a top speed of 19 knots. At cruising speed, it has the range necessary to make ocean crossings, in any weather and sea conditions. *Sister Ship photos and videos*

Basic Information

Category: Mega Yacht

Sub Category: Mega Yacht

Model Year: 2024

Year Built: 2024

Country: United States

Dimensions

LOA: 143' (43.59m)

Beam: 27.33

Speed, Capacities and Weight

Cruise Speed: 16 Knots Kts. (18 MPH)

Max Speed: 19 Knots Kts. (22 MPH)

Water Capacity: 2641 Gallons

Holding Tank: 1056 Gal Gallons

Fuel Capacity: 8820 Gal Gallons

Accommodations

Total Cabins: 5

Total Berths: 5

Total Heads: 5

Hull and Deck Information

Hull Material: Aluminum

Engine Information

Engines: 2

Manufacturer: Caterpillar

Engine Type: Inboard

Fuel Type: Diesel

PHOTOS

P_004



P_005



P_006



P_007



P_008



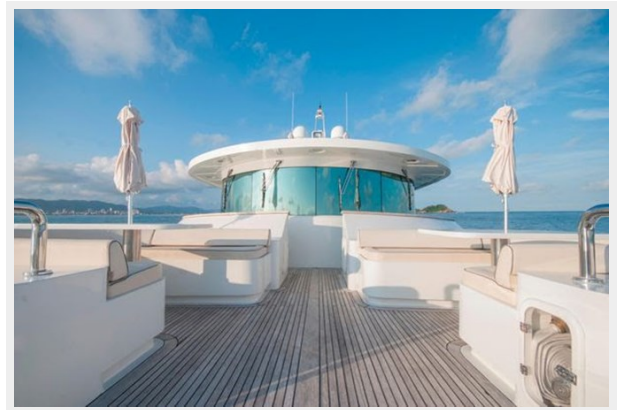
P_009



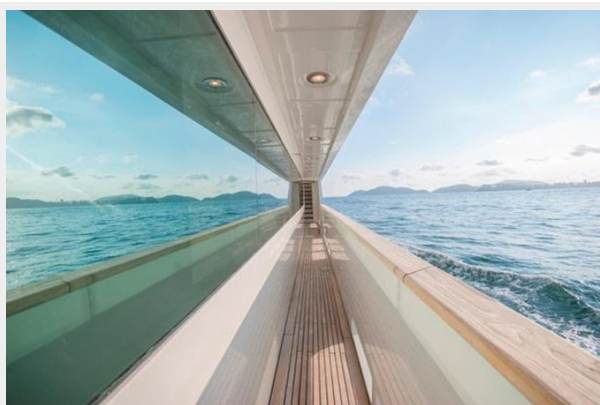
P_010



P_011



P_012



P_013



P_014



P_015



P_016



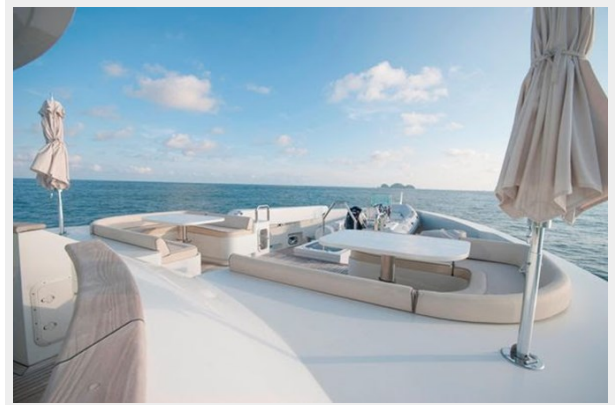
P_017



P_018



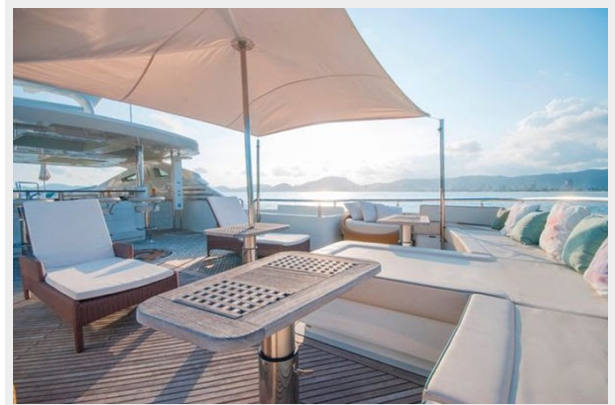
P_019



P_020



P_021



P_022



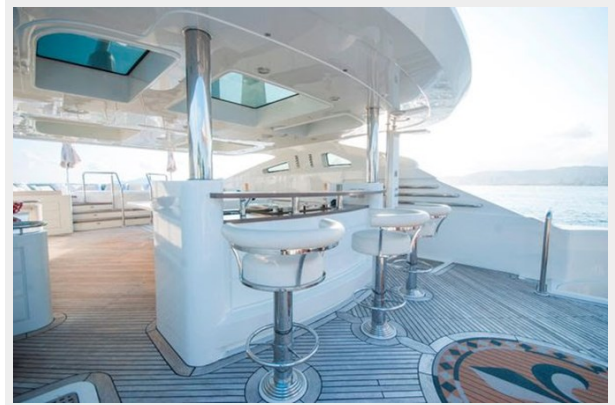
P_023



P_024



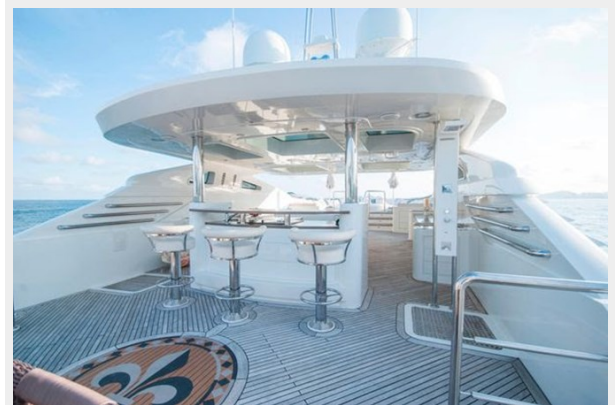
P_025



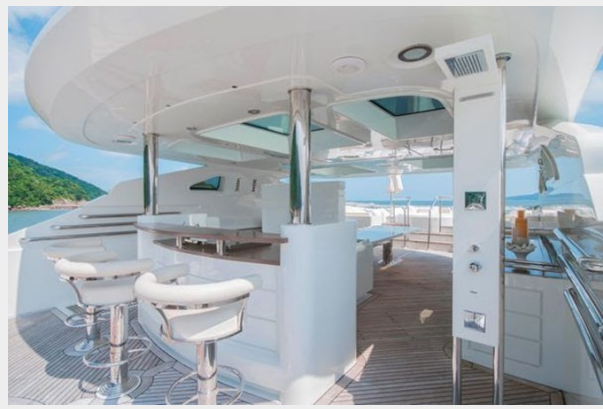
P_026



P_027



P_028



P_029



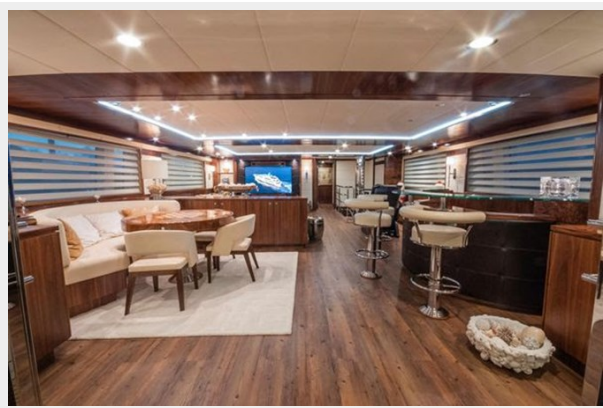
P_030



P_031



P_032



P_033



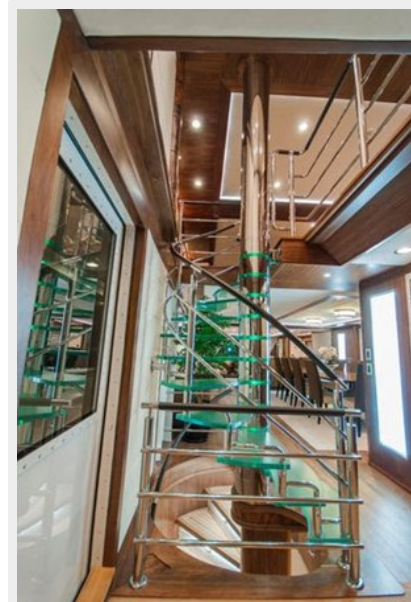
P_034



P_035



P_037



P_036



P_038



P_039



P_040



P_041



P_042



P_043



P_044



P_045



P_046



P_047



P_048



P_049



P_050



P_051



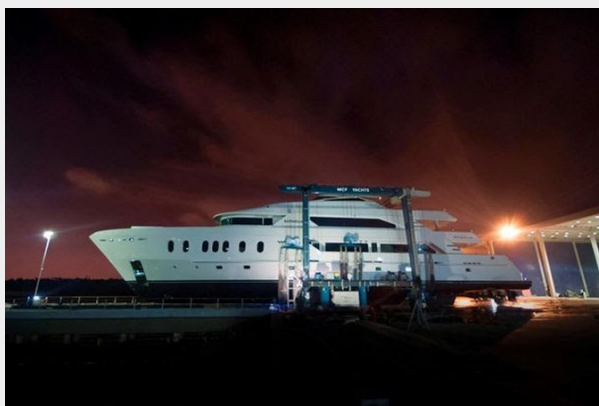
P_052



P_053



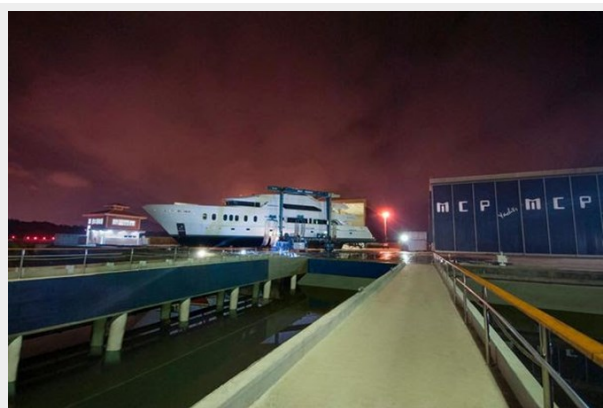
P_054



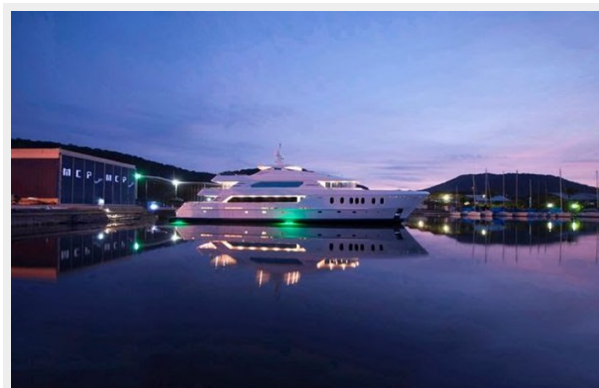
P_055



P_056



P_057



CONTACTS

Andrey Shestakov, leading yacht broker of the sales department of Shestakov Yacht Sales Inc. Shestakov Yacht Sales Inc., the official representative of the Miami/Fort Lauderdale FL headquarters.

Contact details

Email: andrey@shestakovyachtsales.com

Web: shestakovyachtsales.com/en/

Telephones

USA: +1(954)274-4435

Office hours

Monday – Saturday: **9:00 - 21:00** EDT

Sunday: **closed**

Address



Harbour Towne Marina, 850 NE 3rd St,
STE 213, Dania, FL 33004