

NAVETTA 28 — CUSTOM LINE



Builder: CUSTOM LINE

Year Built: 2015

Model: Motor Yacht

Price: \$5,400,000 USD

Location: Spain

LOA: 92' (28.04mm)

Beam: 23

Max Draft: 7' 3" (2.21mm)

Cruise Speed: 13.5 Knots Kts. (16 MPH)

Max Speed: 14 Knots Kts. (16 MPH)

Our experienced yacht broker, Andrey Shestakov, will help you choose and buy a yacht that best suits your needs **Navetta 28 — CUSTOM LINE** from our catalogue. Presently, at Shestakov Yacht Sales Inc., we have a wide variety of yachts available on our sale's list. We also work in close contact with all the big yacht manufacturers from all over the world.

If you would like to buy a yacht **Navetta 28 — CUSTOM LINE** or would like help answering any questions concerning purchasing, selling or chartering a yacht, please call **+1(954)274-4435**

TABLE OF CONTENTS

TABLE OF CONTENTS	2
SPECIFICATIONS	4
Overview	4
Basic Information	5
Dimensions	5
Speed, Capacities and Weight	5
Accommodations	5
Hull and Deck Information	5
Engine Information	5
PHOTOS	6
8350382_20220609142918638_1_XLARGE	6
8350382_20220609142924780_1_XLARGE	6
8350382_20220609142927123_1_XLARGE	6
8350382_20220609142928747_1_XLARGE	6
8350382_20220609142930982_1_XLARGE	6
8350382_20220609142932697_1_XLARGE	6
8350382_20220609142933688_1_XLARGE	7
8350382_20220609142935694_1_XLARGE	7
8350382_20220609142937716_1_XLARGE	7
8350382_20220609142938693_1_XLARGE	7
8350382_20220609142941699_1_XLARGE	7
8350382_20220609142942714_1_XLARGE	7
8350382_20220609142943728_1_XLARGE	8
8350382_20220609142944763_1_XLARGE	8
8350382_20220609142946734_1_XLARGE	8
8350382_20220609142947654_1_XLARGE	8
8350382_20220609142950652_1_XLARGE	8
8350382_20220609142951758_1_XLARGE	8

8350382_20220609142953746_1_XLARGE	9
8350382_20220609142956760_1_XLARGE	9
8350382_20220609142957679_1_XLARGE	9
8350382_20220609142958760_1_XLARGE	9
8350382_20220609143002130_1_XLARGE	9
8350382_20220609143003925_1_XLARGE	9
8350382_20220609143013831_1_XLARGE	10
8350382_20220609143015851_1_XLARGE	10
8350382_20220609143017854_1_XLARGE	10
8350382_20220609143019748_1_XLARGE	10
8350382_20220609143021858_1_XLARGE	10
8350382_20220609143031962_1_XLARGE	10
8350382_20220609143033881_1_XLARGE	11
8350382_20220609143035846_1_XLARGE	11
8350382_20220609143036855_1_XLARGE	11
8350382_20220609143038856_1_XLARGE	11
8350382_20220609143040827_1_XLARGE	11
CONTACTS	12
Contact details	12
Telephones	12
Office hours	12
Address	12

SPECIFICATIONS

Overview

The FERRETTI CUSTOM LINE NAVETTA 28 is a 28.31m compact yet spacious luxury tri-deck motor yacht designed by Zuccon International Project with Ferretti Engineering Department developing the naval architecture. This fine example, CUSTOM LINE NAVETTA 28, for sale, was built in 2015 and is available for viewing. She carries the space and feel of a Superyacht, which is quite amazing given she's built below the 24m load-line length and therefore not subject to full Class regulations. Her top speed is 14 knots, and she boasts a maximum cruising range of 1400nm at 10 knots with power coming from twin 1200 Hp MAN diesel engines perfectly maintained and with low hours. The FERRETTI CUSTOM LINE NAVETTA 28 is recognizable from the unmistakable exterior profile and the panoramic dining area with round glass sliding doors which allow for great flexibility in the use of the upper deck. The sundeck comprises a large sunbathing area and awning. On the main deck, a continuous window goes from stern to bow, while below deck there are four innovative hull windows at the level of the guest cabins, installed for the first time on the market, with "invisible" portholes glued onto the glass itself. The real cutting-edge innovation is in the stern area. The Dual Mode Transom (DMT), a Ferretti Group patent, combines in a single system a floodable garage, a diving platform and a spacious Beach Club, the largest ever on yacht models of this size. When guests walk into the salon, they are welcomed by a large, carefully structured open space. To Starboard, you have the galley, towards the bow, you reach the area reserved to the ship owner's master stateroom with a large bathroom and walk-in wardrobe. She can comfortably accommodate up to 11 guests in 5 luxury en-suite cabins with 5 crew members in 3 additional cabins with separate access. Below decks you will find 4 guest cabins, 3 of which are fitted with double beds and a twin cabin with Pullman bed, all of them with en-suite facilities. Comprehensively equipped with a state-of-the-art A/V entertainment system, this FERRETTI CUSTOM LINE NAVETTA 28 for sale, also carries zero-speed (underway + at anchor) stabilizers for maximum comfort.

Key Features:

- 5 Guest cabins with a main deck master suite
- Twin MAN V8-1200 Hp Diesel engines with low engine hours
- Stabilizing fins TRAC zero speed
- 2 x Seakeeper gyro stabilizers
- Tropical air conditioning
- 2 x Kohler generators
- Upgraded entertainment and A/V system with CCTV
- Premium underwater lighting package
- Wine cellar
- Watermaker
- Black water treatment system
- Williams 445 Jet Tender

- Wind docking station on second deck port and starboard side plus cockpit station control

Basic Information

Category: Motor Yacht

Model Year: 2015

Year Built: 2015

Country: Spain

Dimensions

LOA: 92' (28.04mm)

LWL: 78' 1" (23.8mm)

Beam: 23

Max Draft: 7' 3" (2.21mm)

Speed, Capacities and Weight

Cruise Speed: 13.5 Knots Kts. (16 MPH)

Max Speed: 14 Knots Kts. (16 MPH)

Accommodations

Total Cabins: 5

Total Heads: 6

Hull and Deck Information

Hull Material: Fiberglass

Engine Information

Engines: 2

Manufacturer: MAN

Engine Type: Inboard

Fuel Type: Diesel

PHOTOS

8350382_20220609142918638_1_XLARGE



8350382_20220609142924780_1_XLARGE



8350382_20220609142927123_1_XLARGE



8350382_20220609142928747_1_XLARGE



8350382_20220609142930982_1_XLARGE



8350382_20220609142932697_1_XLARGE



8350382_20220609142933688_1_XLARGE



8350382_20220609142935694_1_XLARGE



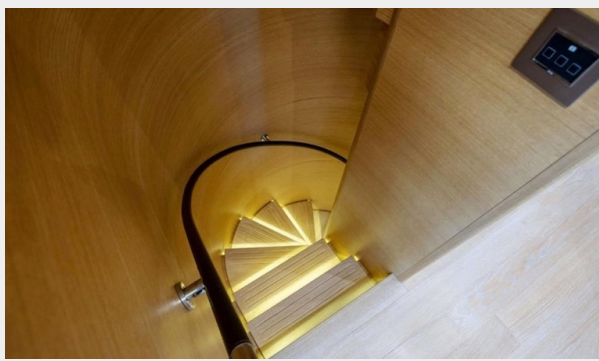
8350382_20220609142937716_1_XLARGE



8350382_20220609142938693_1_XLARGE



8350382_20220609142941699_1_XLARGE



8350382_20220609142942714_1_XLARGE



8350382_20220609142943728_1_XLARGE



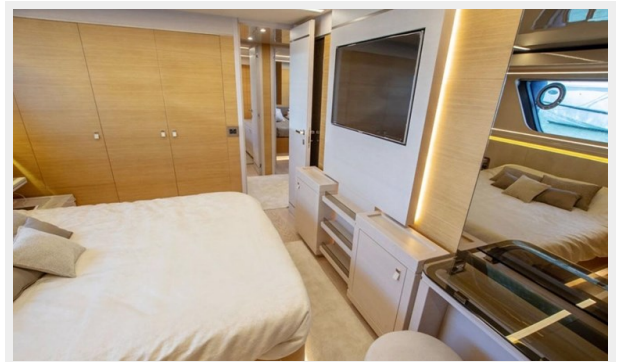
8350382_20220609142944763_1_XLARGE



8350382_20220609142946734_1_XLARGE



8350382_20220609142947654_1_XLARGE



8350382_20220609142950652_1_XLARGE



8350382_20220609142951758_1_XLARGE



8350382_20220609142953746_1_XLARGE



8350382_20220609142956760_1_XLARGE



8350382_20220609142957679_1_XLARGE



8350382_20220609142958760_1_XLARGE



8350382_20220609143002130_1_XLARGE



8350382_20220609143003925_1_XLARGE



8350382_20220609143013831_1_XLARGE



8350382_20220609143015851_1_XLARGE



8350382_20220609143017854_1_XLARGE



8350382_20220609143019748_1_XLARGE



8350382_20220609143021858_1_XLARGE



8350382_20220609143031962_1_XLARGE



8350382_20220609143033881_1_XLARGE



8350382_20220609143035846_1_XLARGE



8350382_20220609143036855_1_XLARGE



8350382_20220609143038856_1_XLARGE



8350382_20220609143040827_1_XLARGE



CONTACTS

Andrey Shestakov, leading yacht broker of the sales department of Shestakov Yacht Sales Inc. Shestakov Yacht Sales Inc., the official representative of the Miami/Fort Lauderdale FL headquarters.

Contact details

Email: andrey@shestakovyachtsales.com

Web: shestakovyachtsales.com/en/

Telephones

USA: +1(954)274-4435

Office hours

Monday – Saturday: **9:00 - 21:00** EDT

Sunday: **closed**

Address



Harbour Towne Marina, 850 NE 3rd St,
STE 213, Dania, FL 33004