

2024 MCP THD 925 — MCP YACHTS



Builder: MCP YACHTS

Year Built: 2024

Model: Mega Yacht

Price: PRICE ON APPLICATION

Location: United States

LOA: 92' 5" (28.17m)

Beam: 24.16

Cruise Speed: 20 Knots Kts. (23 MPH)

Max Speed: 27 Knots Kts. (31 MPH)

Our experienced yacht broker, Andrey Shestakov, will help you choose and buy a yacht that best suits your needs 2024 MCP THD 925 — MCP YACHTS from our catalogue. Presently, at Shestakov Yacht Sales Inc., we have a wide variety of yachts available on our sale's list. We also work in close contact with all the big yacht manufacturers from all over the world.

If you would like to buy a yacht 2024 MCP THD 925 — MCP YACHTS or would like help answering any questions concerning purchasing, selling or chartering a yacht, please call +1(954)274-4435

TABLE OF CONTENTS

TABLE OF CONTENTS	2
SPECIFICATIONS	4
Overview	4
Basic Information	5
Dimensions	5
Speed, Capacities and Weight	5
Accommodations	5
Hull and Deck Information	5
Engine Information	5
PHOTOS	6
P_154	6
P_155	6
P_156	6
P_157	6
P_158	6
P_159	6
P_160	7
P_161	7
P_162	7
P_163	7
P_164	7
P_165	7
P_166	8
P_167	8
P_169	8
P_168	8
P_171	8
P_170	8

P_172	9
P_173	9
P_174	9
P_175	9
P_176	9
P_177	9
P_178	10
P_179	10
P_180	10
P_181	10
P_182	10
P_183	10
P_184	11
P_185	11
P_186	11
CONTACTS	12
Contact details	12
Telephones	12
Office hours	12
Address	12

SPECIFICATIONS

Overview

MCP Yachts THD 925 MCP YACHTS' THD 925 design reflects the engineering and detailing that only MCPs can offer. Elegant lines with an essentially timeless profile. Always beautiful, modern and classic at the same time. Its features, while unique, are designed to satisfy all the tastes of those who love the oceans. A hydraulically folding down balcony and a hydraulically folding up side of the house, forming a new space in the saloon, an exceptional result of design in a unique solution never seen on the market. A spacious interior with new concepts of function, volume and form allow for versions with up to 6 spacious cabins. The two-level Owner's Suite, positioned on the main deck, in the quietest spot on the boat, with a wide view of the sea, is one of the highlights of life on board. A vast lower deck, with the possibility of customizing an arrangement of three to five cabins, allows you to tailor the internal distribution to your needs and seafaring experiences. The crew, comfortably housed aft of the engine room, can offer service and maintenance at the level of a large yacht, with access and passageways on the port side that do not interfere with the privacy of the owner and his guests. Structural lightness and finishing materials that allow for a weight reduction of up to 15 tons compared to any other fiberglass boat on the market... What boatyard on the market offers this advantage in terms of economy and performance? Superior finish of unparalleled quality, customized, with an interior in which the Owner can choose his spaces creatively, guided by the experienced hands of our engineering department... What shipyard in Brazil has a Naval Engineer and navigator with international experience at its helm to lead a project with responsibility, seriousness and knowledge of the sea? Transoceanic autonomy so that the shipowner doesn't just have to dream of a beach in Angra, but can dream of anywhere in the world within reach? What shipyard on the market offers this broad horizon of dreams and adventures? All of MCP YACHTS naval engineering with double-bottomed tanks and watertight compartmentalization, structure with drawings / design / construction approved and Internationally Certified... What boatyard on the market offers this security for you and your family? Possibility of expanding and even reversing water and oil capacities in double-bottomed tanks, making the boat more flexible for greater water capacity (when sailing on the Brazilian coast) or greater oil capacity on ocean crossings. Over 40 decades of producing boats that sail all the world's seas on their own, without having to be transported on ships like the fragile and flammable fiberglass boats available on the market. What shipyard can show this track record? Exclusivity, technology far above what is available on the market, design? In short, everything a great Motor Yacht needs to be famous.

Basic Information

Category: Mega Yacht

Sub Category: Mega Yacht

Model Year: 2024

Year Built: 2024

Country: United States

Dimensions

LOA: 92' 5" (28.17mm)

Beam: 24.16

Speed, Capacities and Weight

Cruise Speed: 20 Knots Kts. (23 MPH)

Max Speed: 27 Knots Kts. (31 MPH)

Water Capacity: 3238 Gallons

Holding Tank: 264 Gal Gallons

Fuel Capacity: 2266 Gal Gallons

Fuel Consumption: 264 Gal Gallons

Accommodations

Total Cabins: 5

Total Berths: 5

Total Heads: 5

Hull and Deck Information

Hull Material: Aluminum

Engine Information

Engines: 2

Manufacturer: Caterpillar

Engine Type: Inboard

Fuel Type: Diesel

PHOTOS

P_154



P_155



P_156



P_157



P_158



P_159



P_160



P_161



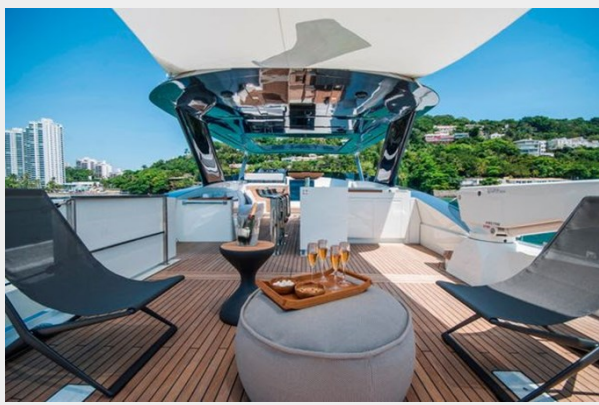
P_162



P_163



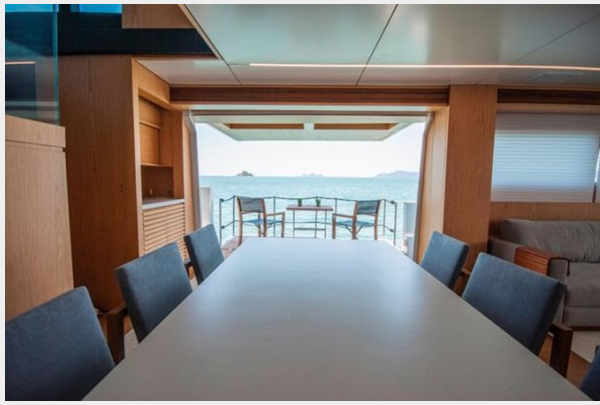
P_164



P_165



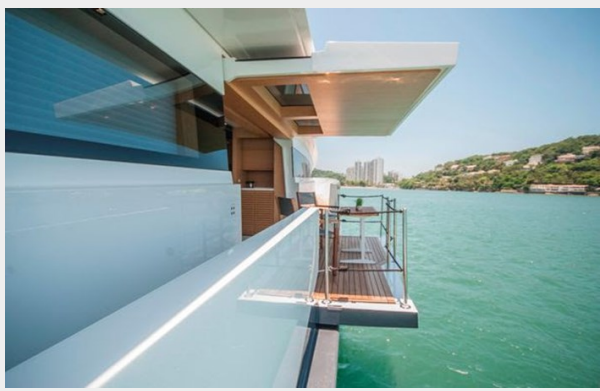
P_166



P_167



P_168



P_169



P_170



P_171



P_172



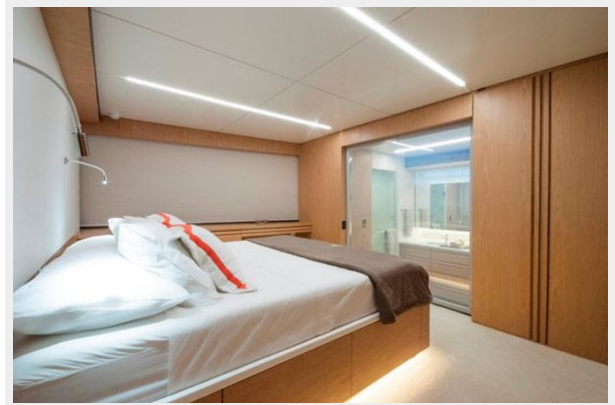
P_173



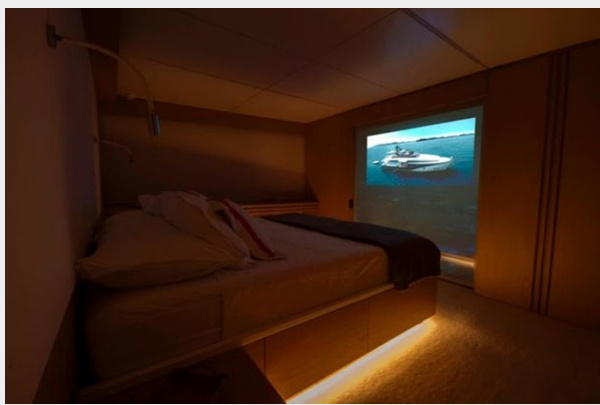
P_174



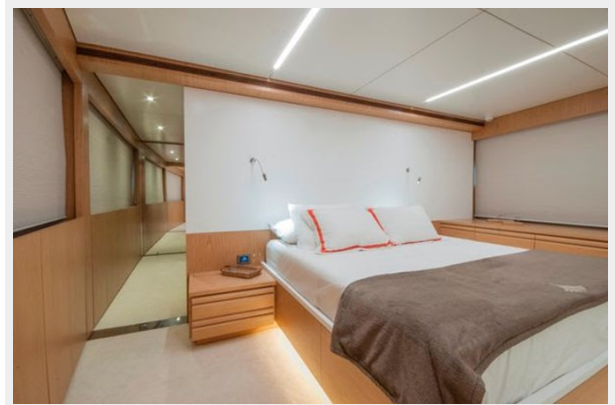
P_175



P_176



P_177



P_178



P_179



P_180



P_181



P_182



P_183



P_184



P_185



P_186



CONTACTS

Andrey Shestakov, leading yacht broker of the sales department of Shestakov Yacht Sales Inc. Shestakov Yacht Sales Inc., the official representative of the Miami/Fort Lauderdale FL headquarters.

Contact details

Email: andrey@shestakovyachtsales.com

Web: shestakovyachtsales.com/en/

Telephones

USA: +1(954)274-4435

Office hours

Monday – Saturday: **9:00 - 21:00** EDT

Sunday: **closed**

Address



Harbour Towne Marina, 850 NE 3rd St,
STE 213, Dania, FL 33004