

2024 MCP GLOBAL EXP 68 DELIVERY DECE — MCP YACHTS



Builder: MCP YACHTS

LOA: 68' (20.73m)

Year Built: 2024

Beam: 18.08

Model: Cruising Sailboat

Price: €2,920,000 EUR

Location: United States

Our experienced yacht broker, Andrey Shestakov, will help you choose and buy a yacht that best suits your needs **2024 MCP Global Exp 68 Delivery December — MCP YACHTS** from our catalogue. Presently, at Shestakov Yacht Sales Inc., we have a wide variety of yachts available on our sale's list. We also work in close contact with all the big yacht manufacturers from all over the world.

If you would like to buy a yacht **2024 MCP Global Exp 68 Delivery December — MCP YACHTS** or would like help answering any questions concerning purchasing, selling or chartering a yacht, please call **+1(954)274-4435**

TABLE OF CONTENTS

TABLE OF CONTENTS	2
SPECIFICATIONS	4
Overview	4
Basic Information	5
Dimensions	5
Speed, Capacities and Weight	5
Accommodations	5
Hull and Deck Information	5
Engine Information	6
PHOTOS	7
P_223	7
P_224	7
P_225	7
P_226	7
P_227	7
P_228	7
P_230	8
P_229	8
P_232	8
P_231	8
P_233	8
P_234	8
P_235	9
P_236	9
P_237	9
P_238	9
P_239	9
P_240	9

P_241	10
P_242	10
P_243	10
P_244	10
P_245	10
P_246	10
P_247	11
P_248	11
P_250	11
P_249	11
P_251	12
P_252	12
P_254	12
P_253	12
P_255	13
CONTACTS	14
Contact details	14
Telephones	14
Office hours	14
Address	14

SPECIFICATIONS

Overview

HULL #4 Delivery December 2024

MCP Global Exp 68 MCP YACHTS Engineers Damien Chaves and Manoel Chaves (two Generation of passionate sailors and aluminum shipbuilders) motivation is to create a sustainable Yacht that can provide comfort and safety for cruisers all over the world. The Global Exp 68, developed by TEAM MCP gathers it all together. The Comfort, sophistication and safety of an MCP Yacht, with the spirit of adventure sailing. Aluminum and material technology: The aluminum hull (alloy 5083 - material certified by Lloyd's Register) is extremely lightweight and robust, infinitely durable, non-flammable, nonabsorbent and rigid up to 10 times greater than heavier fiber glass hulls. Smart joinery, with low density composite structures guarantee lightness and contribute to the high performance of this amazing sailing yacht. Further enhancing the Global Exp 68's exceptional attributes is its smart joinery, featuring low-density composite structures. These structures not only contribute to the yacht's lightweight design but also play a crucial role in optimizing its performance. Together, these innovations and the meticulous craftsmanship of MCP Yachts result in a remarkable sailing yacht that stands as a testament to their unwavering commitment to sustainability, safety, and a truly exceptional cruising experience for sailors around the world.

- 1 - Aft Cabin Main Stateroom With unbeatable Luxury and volume, the main stateroom includes a king size double bed, private office, high ceiling closets, sofa and a stunning and very comfortable bathroom.
- 2 - Cockpit and Doghouse The central cockpit strategically provides unbeatable amplitude in the aft cabin and is fully protected by a beautiful designed hardtop. The rigid doghouse dispenses the fragility and low durability of canvas dodgers, biminis and all the fragile and expensive covers you have to deal with each time you want to set sail. The Global Exp 68 is Always Looking beautiful and ready to go!
- 3 - Engine Room Another highlight on this project; A fully enclosed and high ceiling engine room, with comfortable access through a watertight door with manual lockers, watertight aluminum bulkheads and impeccable acoustically effective insulation that withstands temperatures up to 600°C.
- 4 - Raised salon and Pilot House Quiet sailing in inhospitable weather. The Raised Salon allows the inclusion of a pilot house in the comfort and heat of the main hall, with panoramic views to the sea and autopilot commands, navigation electronics, engine levers and anchor winch control.
- 5 - Swing Keel The hydraulic retractable mechanism takes up very little longitudinal space in the center line. The retracted keel provides a minimum draft of 1.85 meters and guarantees protection to the propulsive assembly and rudder. The system has amazing mechanical, hydraulic and structural robustness designed to increase safety during Anchorage approach. On the same time, with the keel down and in case of an impact, the hydraulic mechanism works as the perfect Shock absorber.
- 6 - Electronic Technical Area An area with controlled ventilation reserved for nav electronics, battery chargers and monitoring systems. The aim is to ensure an ideal environment for the conservation of the most delicate equipment of your boat.
- 7 - Midship

Cabins Unique guest suites provided by the Raised Salon design. They come on board as cozy midship cabins with a privileged sea view. This cabins provide comfortable double beds, folding sofas big storage Spaces and have their own private bathrooms. Perfect ventilation from side portlights and emergency exits thru the good size ocean deck hatches.8 - Front Cabin A big and comfortable suite that could be considered as a master cabin on any sailboat this size. There´s a lot of natural light, a big size double bed, sofa, masses of storage Spaces inside a private closet and a nice and a good size bathroom. The bow Cabin also gives access to the Technical Area at the front.9 - Bow Technical Area A perfect work space – Tool storage area designed for boat work and maintenance.*Sister Ship Photos and Videos*

Basic Information

Category: Cruising Sailboat

Model Year: 2024

Year Built: 2024

Country: United States

Dimensions

LOA: 68' (20.73mm)

Beam: 18.08

Speed, Capacities and Weight

Water Capacity: 626 Gallons

Holding Tank: 32 Gal Gallons

Fuel Capacity: 697 Gal Gallons

Accommodations

Total Cabins: 4

Total Berths: 4

Total Heads: 4

Hull and Deck Information

Hull Material: Aluminum

Engine Information

Engines: 1

Manufacturer: Yanmar

Engine Type: Sail Drive

Fuel Type: Diesel

PHOTOS

P_223



P_224



P_225



P_226



P_227



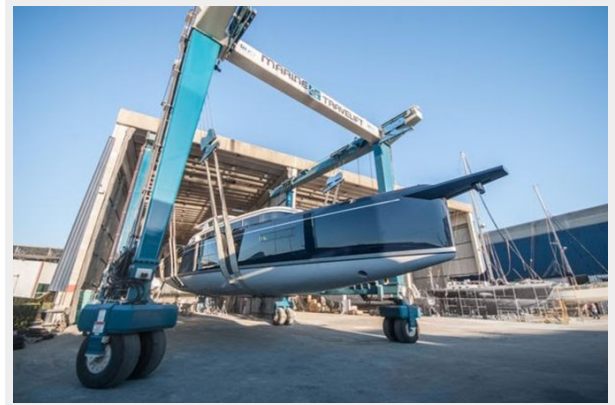
P_228



P_229



P_230



P_232



P_231



P_233



P_234



P_235



P_236



P_237



P_238



P_239



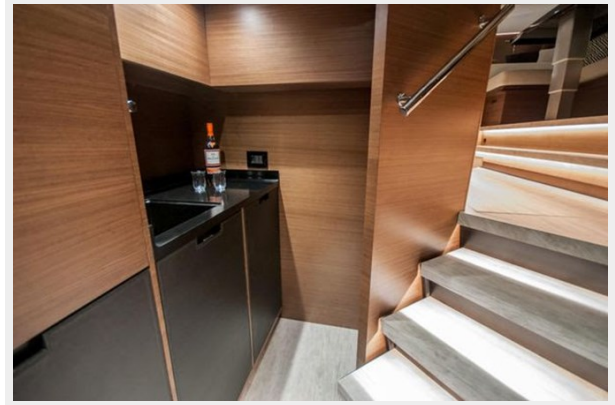
P_240



P_241



P_242



P_243



P_244



P_245



P_246



P_247



P_248



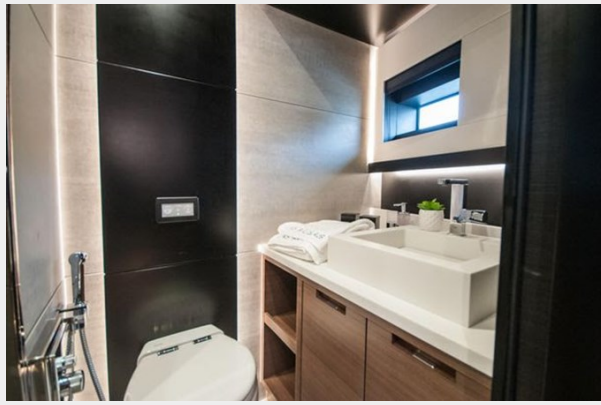
P_250



P_249



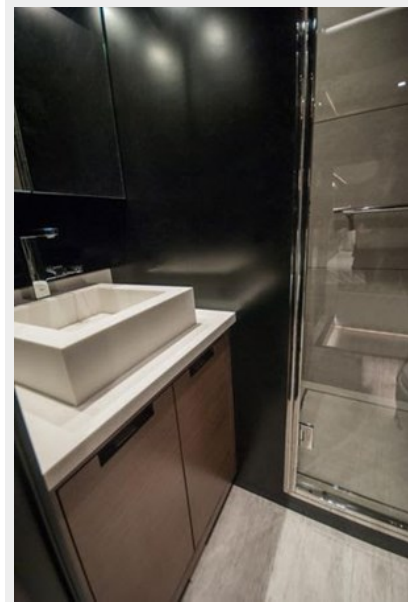
P_251



P_252



P_254



P_253



P_255



CONTACTS

Andrey Shestakov, leading yacht broker of the sales department of Shestakov Yacht Sales Inc. Shestakov Yacht Sales Inc., the official representative of the Miami/Fort Lauderdale FL headquarters.

Contact details

Email: andrey@shestakovyachtsales.com

Web: shestakovyachtsales.com/en/

Telephones

USA: +1(954)274-4435

Office hours

Monday – Saturday: **9:00 - 21:00** EDT

Sunday: **closed**

Address



Harbour Towne Marina, 850 NE 3rd St,
STE 213, Dania, FL 33004