

2024 MCP GLOBAL EXP 68 DELIVERY DECE — MCP YACHTS



Судостроитель: MCP YACHTS

Длина общая: 68' (20.73mm)

Год постройки: 2024

Ширина: 18.08

Модель: Крейсерская яхта

Цена: €2,920,000 EUR

Местонахождение: United States

Купить 2024 MCP Global Exp 68 Delivery December — MCP YACHTS а также выбрать подходящую вам яхту из нашего каталога яхт вам поможет опытный яхтенный брокер Андрей Шестаков. На сегодняшний день компания Shestakov Yacht Sales Inc. имеет большое количество яхт в собственном списке продаж, а также тесно сотрудничает со всеми крупными яхтенными производителями по всему миру.

Для того чтобы купить яхту 2024 MCP Global Exp 68 Delivery December — MCP YACHTS а также проконсультироваться по любому вопросу связанному с покупкой, продажей, чартером яхт позвоните по телефону **+7(918)465-66-44**.

ОГЛАВЛЕНИЕ

ОГЛАВЛЕНИЕ	2
ХАРАКТЕРИСТИКИ	4
Обзор	4
Основная информация	5
Размеры	5
Скорость, вместимость и масса	5
Размещение	5
Корпус и палуба	6
Информация о двигателе	6
ФОТОГРАФИИ	7
P_223	7
P_224	7
P_225	7
P_226	7
P_227	7
P_228	7
P_230	8
P_229	8
P_232	8
P_231	8
P_233	8
P_234	8
P_235	9
P_236	9
P_237	9
P_238	9
P_239	9
P_240	9

P_241	10
P_242	10
P_243	10
P_244	10
P_245	10
P_246	10
P_247	11
P_248	11
P_250	11
P_249	11
P_251	12
P_252	12
P_254	12
P_253	12
P_255	13
КОНТАКТЫ	14
Контактная информация	14
Телефоны	14
Время работы	14
Адрес	14

ХАРАКТЕРИСТИКИ

Обзор

HULL #4 Delivery December 2024

MCP Global Exp 68 MCP YACHTS Engineers Damien Chaves and Manoel Chaves (two Generation of passionate sailors and aluminum shipbuilders) motivation is to create a sustainable Yacht that can provide comfort and safety for cruisers all over the world. The Global Exp 68, developed by TEAM MCP gathers it all together. The Comfort, sophistication and safety of an MCP Yacht, with the spirit of adventure sailing. Aluminum and material technology: The aluminum hull (alloy 5083 - material certified by Lloyd's Register) is extremely lightweight and robust, infinitely durable, non-flammable, nonabsorbent and rigid up to 10 times greater than heavier fiber glass hulls. Smart joinery, with low density composite structures guarantee lightness and contribute to the high performance of this amazing sailing yacht. Further enhancing the Global Exp 68's exceptional attributes is its smart joinery, featuring low-density composite structures. These structures not only contribute to the yacht's lightweight design but also play a crucial role in optimizing its performance. Together, these innovations and the meticulous craftsmanship of MCP Yachts result in a remarkable sailing yacht that stands as a testament to their unwavering commitment to sustainability, safety, and a truly exceptional cruising experience for sailors around the world.

- 1 - Aft Cabin Main Stateroom With unbeatable Luxury and volume, the main stateroom includes a king size double bed, private office, high ceiling closets, sofa and a stunning and very comfortable bathroom.
- 2 - Cockpit and Doghouse The central cockpit strategically provides unbeatable amplitude in the aft cabin and is fully protected by a beautiful designed hardtop. The rigid doghouse dispenses the fragility and low durability of canvas dodgers, biminis and all the fragile and expensive covers you have to deal with each time you want to set sail. The Global Exp 68 is Always Looking beautiful and ready to go!
- 3 - Engine Room Another highlight on this project; A fully enclosed and high ceiling engine room, with comfortable access through a watertight door with manual lockers, watertight aluminum bulkheads and impeccable acoustically effective insulation that withstands temperatures up to 600°C.
- 4 - Raised salon and Pilot House Quiet sailing in inhospitable weather. The Raised Salon allows the inclusion of a pilot house in the comfort and heat of the main hall, with panoramic views to the sea and autopilot commands, navigation electronics, engine levers and anchor winch control.
- 5 - Swing Keel The hydraulic retractable mechanism takes up very little longitudinal space in the center line. The retracted keel provides a minimum draft of 1.85 meters and guarantees protection to the propulsive assembly and rudder. The system has amazing mechanical, hydraulic and structural robustness designed to increase safety during Anchorage approach. On the same time, with the keel down and in case of an impact, the hydraulic mechanism works as the perfect Shock absorber.
- 6 - Electronic Technical Area An area with controlled ventilation reserved for nav electronics, battery chargers and monitoring systems. The aim is to ensure an ideal environment for the conservation of the most delicate equipment of your boat.
- 7 - Midship

Cabins Unique guest suites provided by the Raised Salon design. They come on board as cozy midship cabins with a privileged sea view. This cabins provide comfortable double beds, folding sofas big storage Spaces and have their own private bathrooms. Perfect ventilation from side portlights and emergency exits thru the good size ocean deck hatches.8 - Front Cabin A big and comfortable suite that could be considered as a master cabin on any sailboat this size. There's a lot of natural light, a big size double bed, sofa, masses of storage Spaces inside a private closet and a nice and a good size bathroom. The bow Cabin also gives access to the Technical Area at the front.9 - Bow Technical Area A perfect work space – Tool storage area designed for boat work and maintenance.*Sister Ship Photos and Videos*

Основная информация

Тип судна: Крейсерская яхта

Модельный год: 2024

Год постройки: 2024

Страна: United States

Размеры

Длина общая: 68' (20.73mm)

Ширина: 18.08

Скорость, вместимость и масса

Вместимость воды: 626 Gallons

Вместимость сточного бака: 32 Gal
Gallons

Объем топливного бака: 697 Gal Gallons

Размещение

Всего кают: 4

Всего коек: 4

Всего ком. состава: 4

Корпус и палуба

Материал корпуса: Aluminum

Информация о двигателе

Двигатели: 1

Производитель: Yanmar

Тип двигателя: Sail Drive

Тип топлива: Diesel

ФОТОГРАФИИ

P_223



P_224



P_225



P_226



P_227



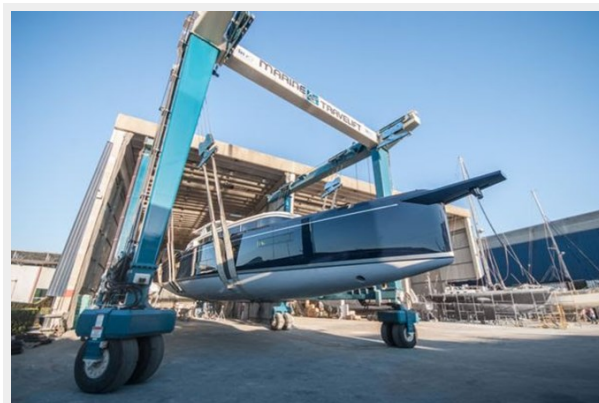
P_228



P_229



P_230



P_232



P_231



P_233



P_234



P_235



P_236



P_237



P_238



P_239



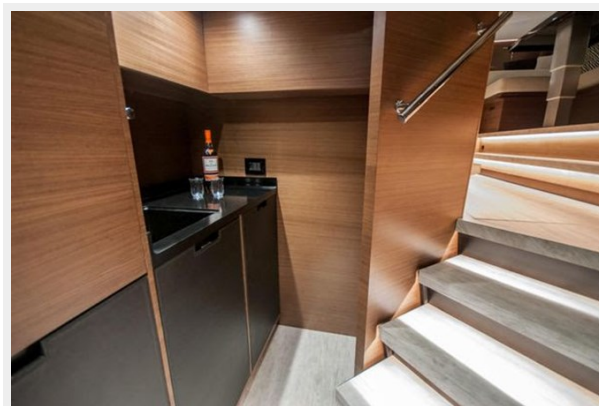
P_240



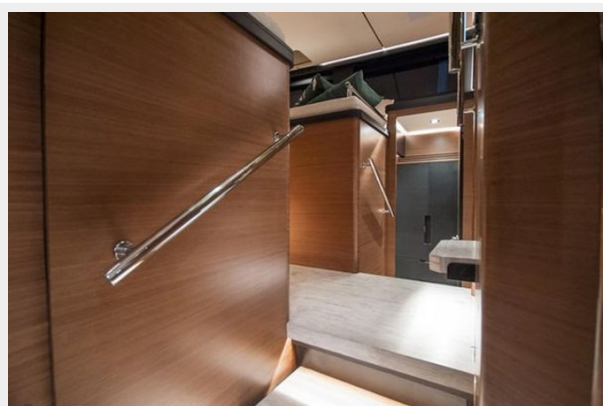
P_241



P_242



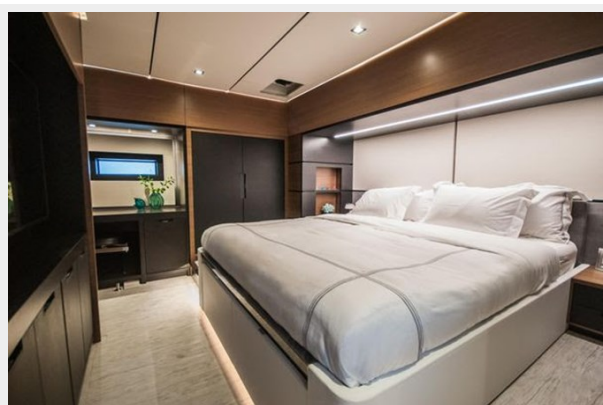
P_243



P_244



P_245



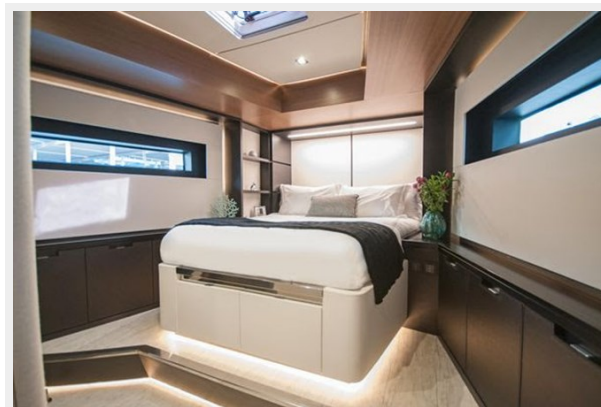
P_246



P_247



P_248



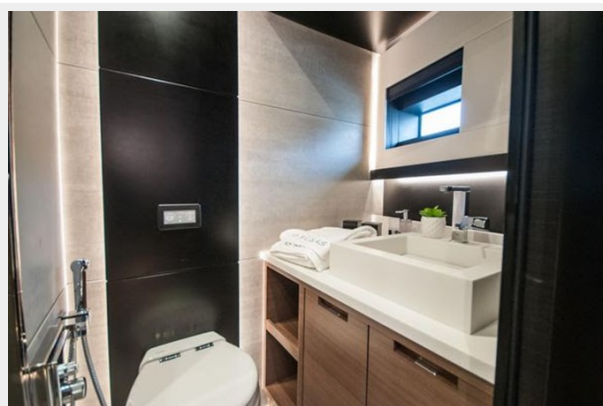
P_250



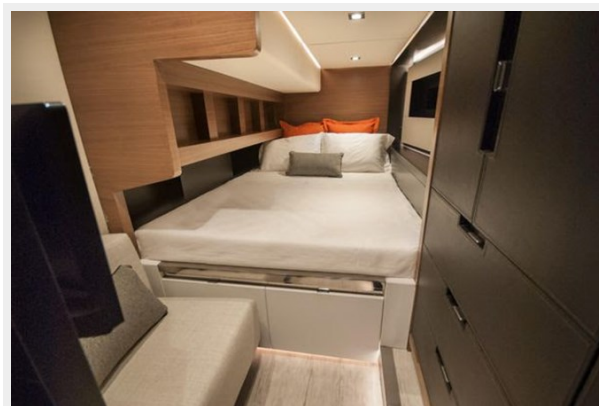
P_249



P_251



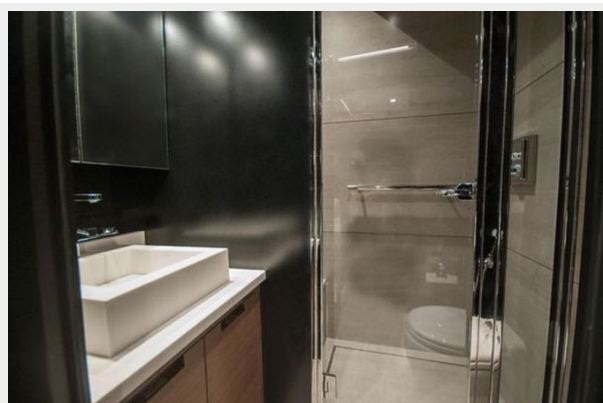
P_252



P_254



P_253



P_255



КОНТАКТЫ

Андрей Шестаков (Andrey Shestakov) – ведущий яхтенный брокер отдела продаж яхт и судов компании Shestakov Yacht Sales Inc. Официальный представитель Shestakov Yacht Sales Inc. для русскоговорящих клиентов в центральном офисе компании в Майами/Форт Лодердейл/Флорида/США.

Контактная информация

Email: andrey@shestakovyachtsales.com

Web: shestakovyachtsales.com

Телефоны

Краснодарский край: **+7(918)465-66-44**

США, Майами, Флорида: **+1(954)274-4435**

Время работы

Понедельник – Суббота: **9:00 - 21:00**
EDT

Воскресенье: **Закрито**

Адрес



Harbour Towne Marina, 850 NE 3rd St,
STE 213, Dania, FL 33004