

SAINT GERMAIN — BENETTI



Builder: BENETTI

Year Built: 1983

Model: mega yacht

Price: PRICE ON APPLICATION

Location: Brazil

LOA: 106' (32.31mm)

Beam: 21

Max Draft: 8' (2.44mm)

Cruise Speed: 12 Knots Kts. (14 MPH)

Max Speed: 16 Knots Kts. (18 MPH)

Our experienced yacht broker, Andrey Shestakov, will help you choose and buy a yacht that best suits your needs **Saint Germain — BENETTI** from our catalogue. Presently, at Shestakov Yacht Sales Inc., we have a wide variety of yachts available on our sale's list. We also work in close contact with all the big yacht manufacturers from all over the world.

If you would like to buy a yacht **Saint Germain — BENETTI** or would like help answering any questions concerning purchasing, selling or chartering a yacht, please call **+1(954)274-4435**

TABLE OF CONTENTS

TABLE OF CONTENTS	2
SPECIFICATIONS	5
Overview	5
Basic Information	5
Dimensions	5
Speed, Capacities and Weight	5
Accommodations	5
Hull and Deck Information	5
Engine Information	6
PHOTOS	7
P_505	7
P_506	7
P_507	7
P_508	7
P_509	7
P_510	7
P_511	8
P_512	8
P_513	8
P_514	8
P_516	9
P_515	9
P_517	9
P_518	9
P_519	10
P_520	10
P_521	10
P_522	10

P_523	11
P_524	11
P_525	11
P_526	11
P_527	12
P_528	12
P_529	12
P_530	12
P_531	13
P_532	13
P_533	13
P_534	13
P_536	13
P_535	13
P_538	14
P_537	14
P_539	14
P_540	14
P_541	14
P_542	14
P_543	15
P_544	15
P_546	15
P_545	15
P_547	15
P_548	15
P_550	16
P_549	16
CONTACTS	17

Contact details	17
Telephones	17
Office hours	17
Address	17

SPECIFICATIONS

Overview

Originally built as a Benetti under concession in 1983, this yacht was entirely rebuilt and repowered in 2015, with new licensing and new documents issued.

Basic Information

Category: mega yacht

Sub Category: Superyacht

Model Year: 1983

Year Built: 1983

Country: Brazil

Dimensions

LOA: 106' (32.31mm)

Beam: 21

Max Draft: 8' (2.44mm)

Speed, Capacities and Weight

Cruise Speed: 12 Knots Kts. (14 MPH)

Max Speed: 16 Knots Kts. (18 MPH)

Accommodations

Total Cabins: 5

Total Berths: 6

Total Heads: 5

Hull and Deck Information

Hull Material: Steel

Engine Information

Engines: 2

Manufacturer: MAN

Engine Type: Inboard

Fuel Type: Diesel

PHOTOS

P_505



P_506



P_507



P_508



P_509



P_510



P_511



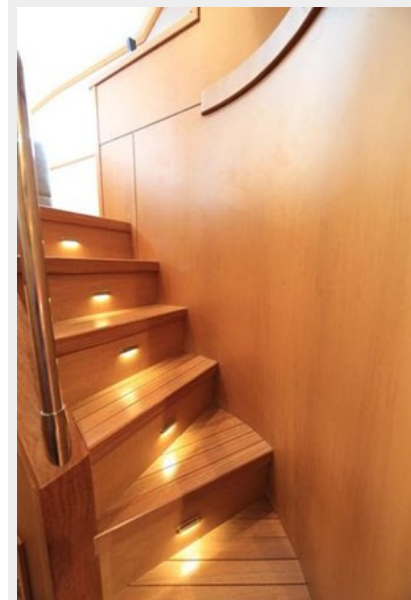
P_512



P_513



P_514



P_515



P_516



P_517



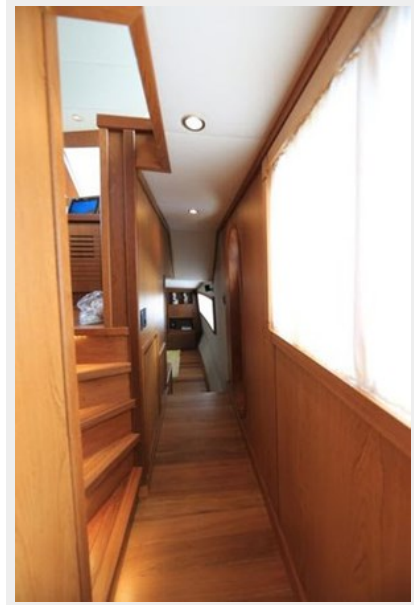
P_518



P_519



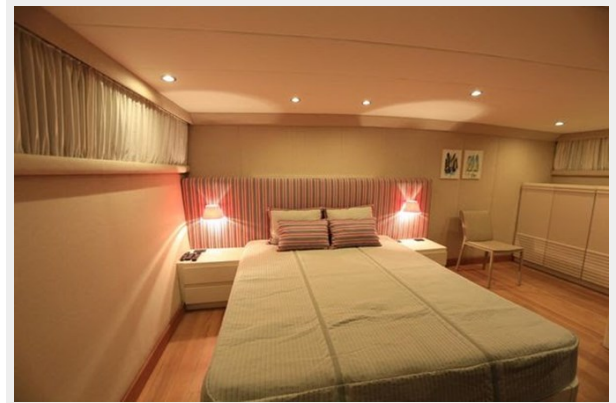
P_520



P_521



P_522



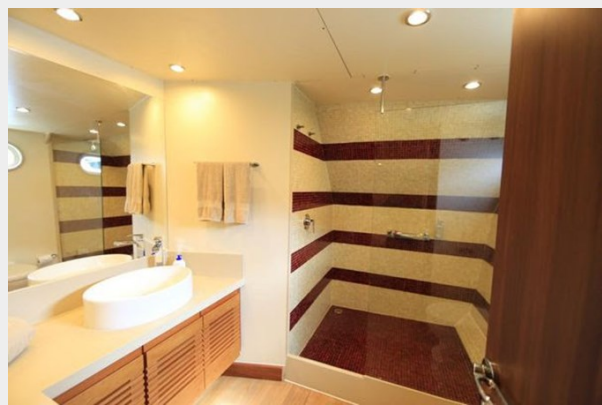
P_523



P_524



P_525



P_526



P_527



P_528



P_529



P_530



P_531



P_532



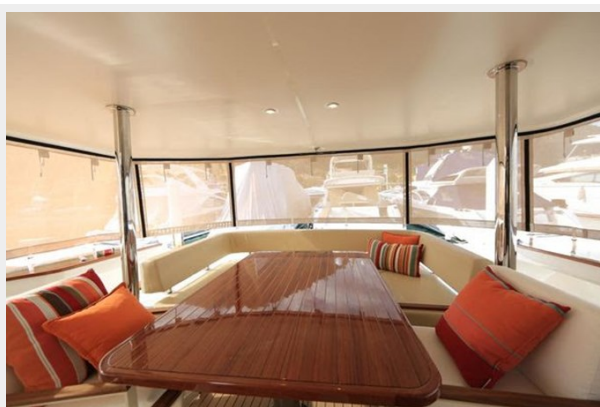
P_533



P_534



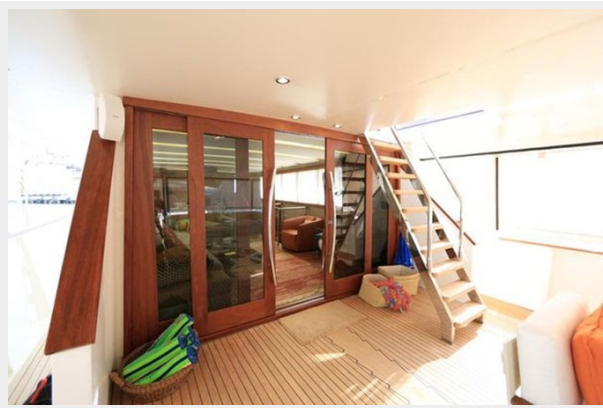
P_535



P_536



P_537



P_538



P_539



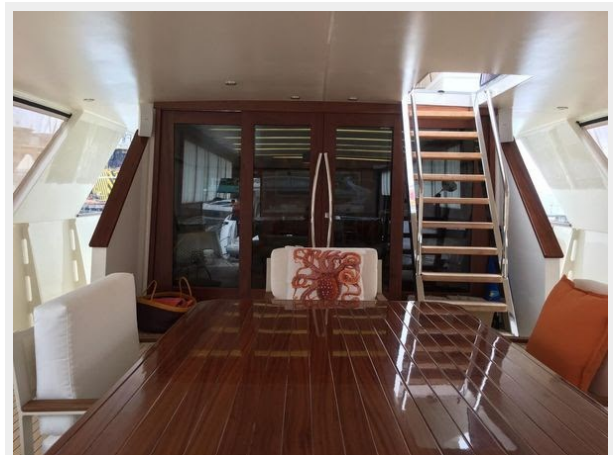
P_540



P_541



P_542



P_543



P_544



P_546



P_545



P_547



P_548



P_549



P_550



CONTACTS

Andrey Shestakov, leading yacht broker of the sales department of Shestakov Yacht Sales Inc. Shestakov Yacht Sales Inc., the official representative of the Miami/Fort Lauderdale FL headquarters.

Contact details

Email: andrey@shestakovyachtsales.com

Web: shestakovyachtsales.com/en/

Telephones

USA: +1(954)274-4435

Office hours

Monday – Saturday: **9:00 - 21:00** EDT

Sunday: **closed**

Address



Harbour Towne Marina, 850 NE 3rd St,
STE 213, Dania, FL 33004