

MISS STEPHANIE — RICHMOND YACHTS



Builder: RICHMOND YACHTS

Year Built: 2004

Model: Motor Yacht

Price: \$8,950,000 USD

Location: United States

LOA: 138' (42.06mm)

Beam: 27.91

Min Draft: 7' 7" (2.31mm)

Cruise Speed: 12.5 Knots Kts. (14 MPH)

Max Speed: 16.5 Knots Kts. (19 MPH)

Our experienced yacht broker, Andrey Shestakov, will help you choose and buy a yacht that best suits your needs **MISS STEPHANIE — RICHMOND YACHTS** from our catalogue. Presently, at Shestakov Yacht Sales Inc., we have a wide variety of yachts available on our sale's list. We also work in close contact with all the big yacht manufacturers from all over the world.

If you would like to buy a yacht **MISS STEPHANIE — RICHMOND YACHTS** or would like help answering any questions concerning purchasing, selling or chartering a yacht, please call **+1(954)274-4435**

TABLE OF CONTENTS

TABLE OF CONTENTS	2
SPECIFICATIONS	4
Overview	4
Basic Information	4
Dimensions	4
Speed, Capacities and Weight	4
Accommodations	5
Hull and Deck Information	5
Engine Information	5
PHOTOS	6
Main Deck Salon	6
MISS STEPHANIE 138' (42m) Richmond Motoryacht, 2004/2023 - Main Deck Salon	6
Main Deck Dining	6
Main Deck Dining	6
Game Table Main Salon	6
Main Deck Bar	6
Aft Deck	7
Aft Deck	7
Main Deck Master Stateroom	7
Master Stateroom	7
Main Deck Master Stateroom	7
Master Ensuite Tub	7
Stairs to Lower Deck	8
Main Deck - Master Ensuite	8
Lower Deck Guest Stateroom	8
Lower Deck Guest Stateroom	8
Lower Deck Ensuite	8
Lower Twin Stateroom Port forward	8

Lower Twin Stateroom Starboard forward	9
Guest Stateroom	9
Bridge Deck	9
Bridge - Aft Deck	9
Sky Lounge Bar	9
Bridge - Aft Deck	9
Sky Lounge	10
Sky Lounge	10
Wheelhouse	10
Wheelhouse	10
Wheelhouse	10
Wheelhouse	10
Sun Deck Seating Area	11
Sun Deck Bar	11
Sun Deck Jacuzzi	11
Sun Deck Jacuzzi	11
Sun Deck	11
Sun Deck	11
Toys	12
Exterior	12
Aerial	12
CONTACTS	13
Contact details	13
Telephones	13
Office hours	13
Address	13

SPECIFICATIONS

Overview

MISS STEPHANIE, built by Richmond Yachts in 2004, counts with a luxurious interior designed by the Pavlik Design Team, and a dynamic exterior styled by the Setzer Design Group. Her past and present owners have kept her well-maintained, undergoing refits between 2018 and 2023. A few of her upgrades include a new headliner, carpet, furniture, air conditioners, two generators, and many mechanical upgrades. Her timeless styling, beautiful furnishings, and a comfortable layout that sleeps up to 12 guests in 6 staterooms, create an elegant and impressive atmosphere with the volume of a much larger yacht, which makes this vessel one of the most successful charter boats in the industry. She features an ultra-modern stabilization system to ensure comfort at sea or at anchor. The main deck full-beam master has a king's berth and his and hers ensuite. The VIP room is located on the bridge deck and has a queen berth as well as a large ensuite. Below deck are 2 large guest staterooms with queen berths and ensuites, and 2 twin cabins with twin berths. All staterooms have ample closets and storage, as well as entertainment systems. Total accommodations: 1 king, 3 queens, and 2 sets of twins.

Basic Information

Category: Motor Yacht

Model Year: 2004

Year Built: 2004

Refit Type: 2023

Country: United States

Dimensions

LOA: 138' (42.06mm)

Beam: 27.91

Min Draft: 7' 7" (2.31mm)

Speed, Capacities and Weight

Cruise Speed: 12.5 Knots Kts. (14 MPH)

Cruise Speed Range: 2000

Max Speed: 16.5 Knots Kts. (19 MPH)

Gross Tonnage: 396 Pounds

Water Capacity: 1800 Gallons

Fuel Capacity: 7526 Gal Gallons

Accommodations

Total Cabins: 6

Sleeps: 12

Crew Cabin: 8

Crew Berths: 4

Hull and Deck Information

Hull Material: Fiberglass

Exterior Designer: Setzer Design Group

Interior Designer: Liz Dalton

Engine Information

Engines: 2

Manufacturer: Caterpillar

Engine Type: Inboard

Fuel Type: Diesel

PHOTOS

MISS STEPHANIE 138' (42m) Richmond Motoryacht, 2004/2023 - Main Deck Salon



Main Deck Salon



Main Deck Dining



Main Deck Dining



Main Deck Bar



Game Table Main Salon



Aft Deck



Aft Deck



Master Stateroom



Main Deck Master Stateroom



Main Deck Master Stateroom



Master Ensuite Tub



Main Deck - Master Ensuite



Stairs to Lower Deck



Lower Deck Guest Stateroom



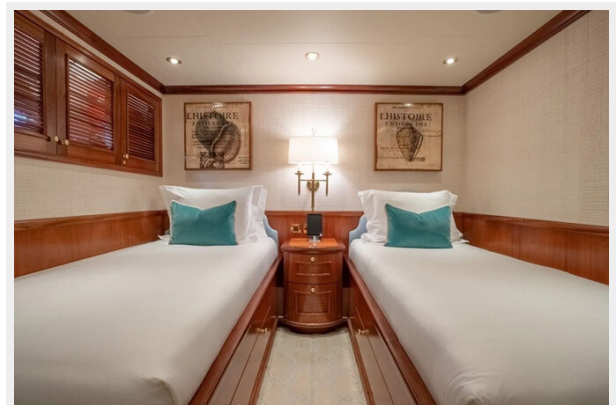
Lower Deck Guest Stateroom



Lower Deck Ensuite



Lower Twin Stateroom Port forward



Lower Twin Stateroom Starboard forward



Guest Stateroom



Bridge Deck



Bridge - Aft Deck



Bridge - Aft Deck



Sky Lounge Bar



Sky Lounge



Sky Lounge



Wheelhouse



Wheelhouse



Wheelhouse



Wheelhouse



Sun Deck Bar



Sun Deck Seating Area



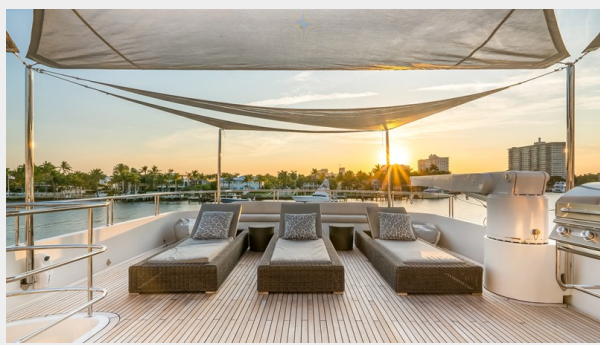
Sun Deck Jacuzzi



Sun Deck Jacuzzi



Sun Deck



Sun Deck



Toys



Exterior



Aerial



CONTACTS

Andrey Shestakov, leading yacht broker of the sales department of Shestakov Yacht Sales Inc. Shestakov Yacht Sales Inc., the official representative of the Miami/Fort Lauderdale FL headquarters.

Contact details

Email: andrey@shestakovyachtsales.com

Web: shestakovyachtsales.com/en/

Telephones

USA: +1(954)274-4435

Office hours

Monday – Saturday: **9:00 - 21:00** EDT

Sunday: **closed**

Address



Harbour Towne Marina, 850 NE 3rd St,
STE 213, Dania, FL 33004