

## UBI BENE — VALENA YACHTING



**Builder:** VALENA YACHTING

**Year Built:** 2009

**Model:** Cruising Ketch

**Price:** PRICE ON APPLICATION

**Location:** Turkey

**LOA:** 144' 5" (44mm)

**Beam:** 29.52

**Min Draft:** 8' 3" (2.5mm)

**Max Draft:** 9' 3" (2.8mm)

**Cruise Speed:** 10 Knots Kts. (12 MPH)

**Max Speed:** 13 Knots Kts. (15 MPH)

Our experienced yacht broker, Andrey Shestakov, will help you choose and buy a yacht that best suits your needs **UBI BENE — VALENA YACHTING** from our catalogue. Presently, at Shestakov Yacht Sales Inc., we have a wide variety of yachts available on our sale's list. We also work in close contact with all the big yacht manufacturers from all over the world.

If you would like to buy a yacht **UBI BENE — VALENA YACHTING** or would like help answering any questions concerning purchasing, selling or chartering a yacht, please call **+1(954)274-4435**

---

# TABLE OF CONTENTS

---

TABLE OF CONTENTS	2
SPECIFICATIONS	3
Overview	3
Basic Information	3
Dimensions	3
Speed, Capacities and Weight	3
Accommodations	4
Hull and Deck Information	4
Engine Information	4
PHOTOS	5
CONTACTS	8
Contact details	8
Telephones	8
Office hours	8
Address	8

---

# SPECIFICATIONS

---

## Overview

---

The interior design of the Ubi Bene accommodates upto to 10 guests, who can make themselves comfortable in 5 cosy rooms, including 3 Double and 2 Twin rooms. In addition, she can carry upto 7 crew members onboard to make sure that guests get to enjoy a relaxed and luxurious yachting experience. Her timeless style, attractive furniture and lavish seats that are dispersed throughout the yacht create a pleasing and relaxed ambiance. Ubi Bene is equipped with an array of impressive leisure and entertainment facilities, making her the perfect yacht for social events with family and friends. The Ubi Bene is a 144ft /43.89m ketch sail yacht with a displacement hull that was constructed by Valena Yachting and set afloat in 2009.

## Basic Information

---

**Category:** Cruising Ketch

**Model Year:** 2009

**Year Built:** 2009

**Country:** Turkey

## Dimensions

---

**LOA:** 144' 5" (44mm)

**Beam:** 29.52

**Min Draft:** 8' 3" (2.5mm)

**Max Draft:** 9' 3" (2.8mm)

## Speed, Capacities and Weight

---

**Cruise Speed:** 10 Knots Kts. (12 MPH)

**Max Speed:** 13 Knots Kts. (15 MPH)

**Gross Tonnage:** 200 Pounds

**Water Capacity:** 3000 Gallons

**Fuel Capacity:** 2641.72 Gal Gallons

---

## Accommodations

---

**Total Cabins:** 5

**Total Berths:** 10

**Total Heads:** 5

---

## Hull and Deck Information

---

**Hull Material:** Wood

**Deck Material:** Teak

**Hull Configuration:** Monohull

**Hull Designer:** Valena Yachting

**Interior Designer:** Valena Yachting

---

## Engine Information

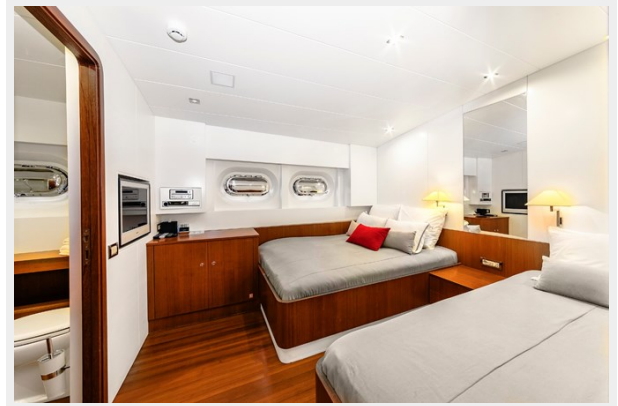
---

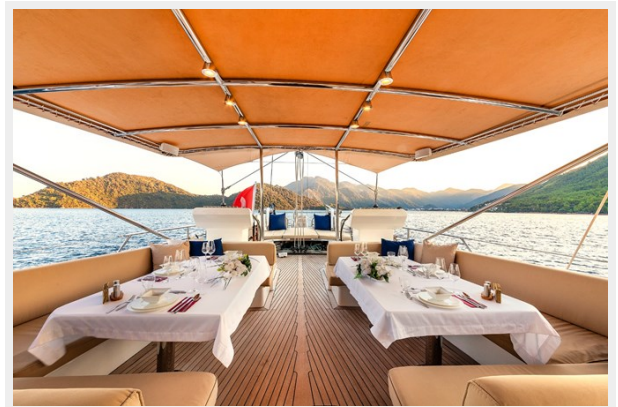
**Engines:** 2

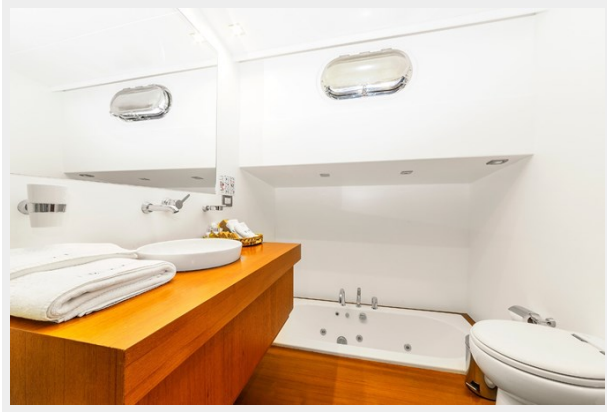
**Manufacturer:** Caterpillar

**Fuel Type:** Diesel

# PHOTOS







# CONTACTS

---

Andrey Shestakov, leading yacht broker of the sales department of Shestakov Yacht Sales Inc. Shestakov Yacht Sales Inc., the official representative of the Miami/Fort Lauderdale FL headquarters.

## Contact details

---

Email: [andrey@shestakovyachtsales.com](mailto:andrey@shestakovyachtsales.com)

Web: [shestakovyachtsales.com/en/](http://shestakovyachtsales.com/en/)

## Telephones

---

USA: +1(954)274-4435

## Office hours

---

Monday – Saturday: **9:00 - 21:00** EDT

Sunday: **closed**

## Address

---



Harbour Towne Marina, 850 NE 3rd St,  
STE 213, Dania, FL 33004