

LEONIDAS — CUSTOM



Builder: CUSTOM

Year Built: 2018

Model: Semi-Displacement

Price: €7,350,000 EUR

Location: Turkey

LOA: 120' 9" (36.8mm)

Beam: 24.6

Max Draft: 6' 1" (1.85mm)

Cruise Speed: 12.5 Knots Kts. (14 MPH)

Max Speed: 17.5 Knots Kts. (20 MPH)

Our experienced yacht broker, Andrey Shestakov, will help you choose and buy a yacht that best suits your needs **Leonidas — CUSTOM** from our catalogue. Presently, at Shestakov Yacht Sales Inc., we have a wide variety of yachts available on our sale's list. We also work in close contact with all the big yacht manufacturers from all over the world.

If you would like to buy a yacht **Leonidas — CUSTOM** or would like help answering any questions concerning purchasing, selling or chartering a yacht, please call **+1(954)274-4435**

TABLE OF CONTENTS

TABLE OF CONTENTS	2
SPECIFICATIONS	3
Overview	3
Basic Information	3
Dimensions	3
Speed, Capacities and Weight	3
Accommodations	4
Hull and Deck Information	4
Engine Information	4
PHOTOS	5
CONTACTS	15
Contact details	15
Telephones	15
Office hours	15
Address	15

SPECIFICATIONS

Overview

Designed and engineered by the renowned Cor D. Rover, LEONIDAS adheres strictly to RINA standards. Crafted with a cold-moulded fibre epoxy coating over wood, LEONIDAS represents an uncompromising commitment to quality. Originally launched in 2018 as a fully custom project, LEONIDAS underwent a comprehensive refit in 2022. This refit included a 2m extension, the installation of a new hydraulic platform, and a fresh exterior paint job. With a length of 36.8 meters, LEONIDAS offers comfort at sea and robust performance. She is powered by two CAT C32 engines, delivering a combined output of 1925 HP, ensuring optimal cruising performance. Key features:- The naval engineering & exterior design by the renowned Cor D. Rover.- A newly installed hydraulic platform.- A large master cabin with a fold-down balcony.- Complete privacy with a fully enclosed Sky bridge.- Rina class & commercially compliant.- The fifth cabin can transform into a day lounge.- Competitive price for a 37m Tri-deck yacht.- Ready for immediate delivery.

Basic Information

Category: Semi-Displacement

Sub Category: Semi-Displacement

Model Year: 2018

Year Built: 2018

Refit Type: Aft extension

Country: Turkey

Dimensions

LOA: 120' 9" (36.8mm)

Beam: 24.6

Max Draft: 6' 1" (1.85mm)

Speed, Capacities and Weight

Cruise Speed: 12.5 Knots Kts. (14 MPH)

Max Speed: 17.5 Knots Kts. (20 MPH)

Gross Tonnage: 244 Pounds

Water Capacity: 4000 Gallons

Fuel Capacity: 3830.49 Gal Gallons

Accommodations

Total Cabins: 4

Sleeps: 8

Total Heads: 6

Crew Cabin: 5

Crew Berths: 5

Hull and Deck Information

Hull Material: Wood

Hull Configuration: Semi-Displacement

Hull Color: Grey

Exterior Designer: Cor D. Rover Design

Interior Designer: In house

Engine Information

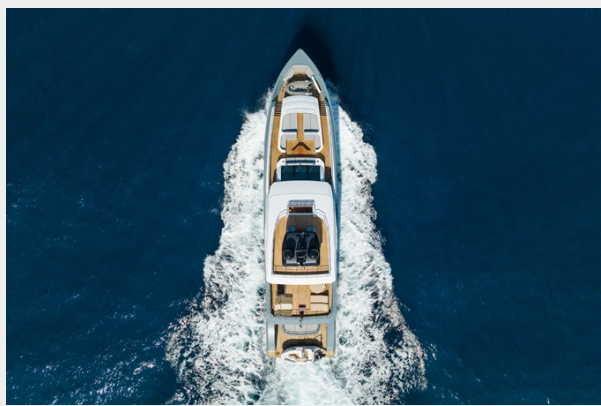
Engines: 2

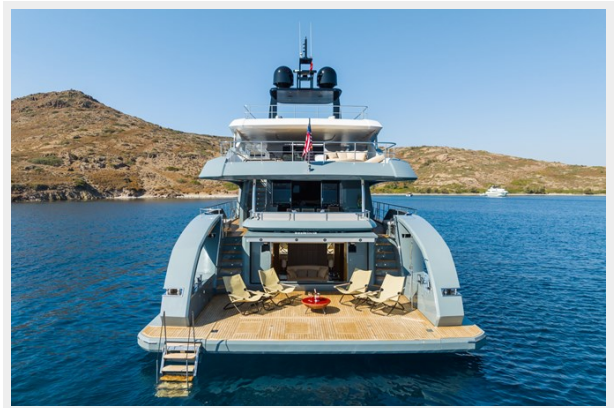
Manufacturer: CAT

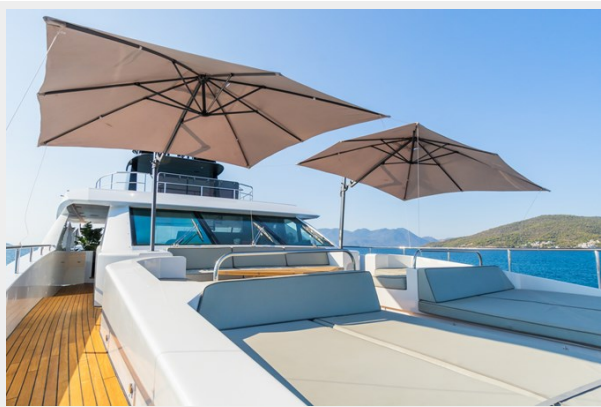
Engine Type: Inboard

Fuel Type: Diesel

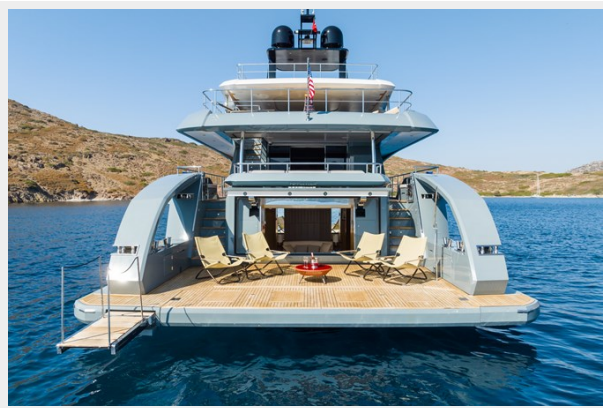
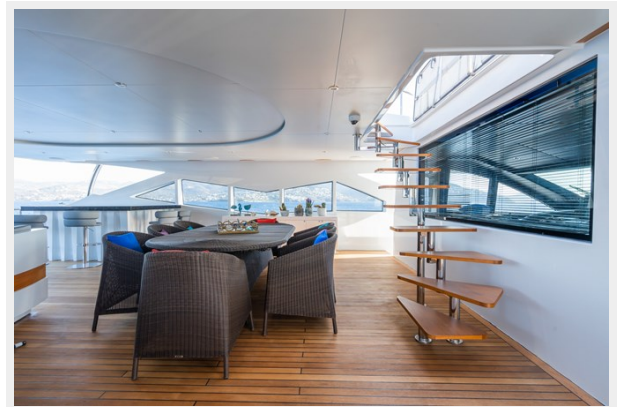
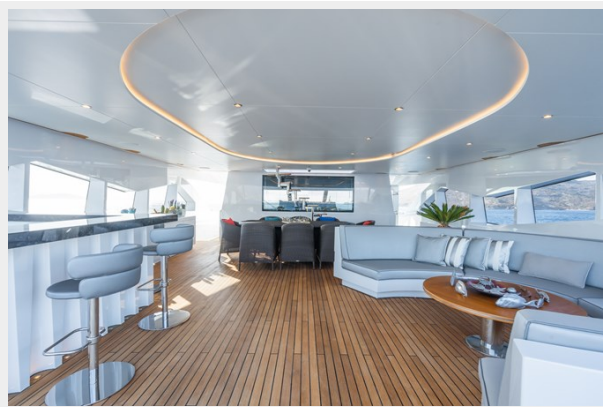
PHOTOS





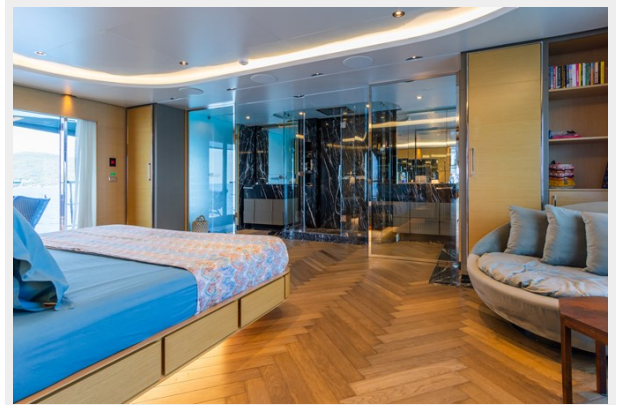


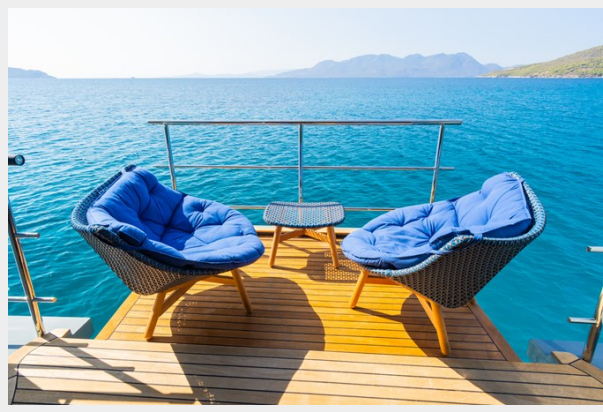














CONTACTS

Andrey Shestakov, leading yacht broker of the sales department of Shestakov Yacht Sales Inc. Shestakov Yacht Sales Inc., the official representative of the Miami/Fort Lauderdale FL headquarters.

Contact details

Email: andrey@shestakovyachtsales.com

Web: shestakovyachtsales.com/en/

Telephones

USA: +1(954)274-4435

Office hours

Monday – Saturday: **9:00 - 21:00** EDT

Sunday: **closed**

Address



Harbour Towne Marina, 850 NE 3rd St,
STE 213, Dania, FL 33004