

## BLACK SOIL — HORIZON



**Builder:** HORIZON

**Year Built:** 2020

**Model:** expedition yacht

**Price:** \$5,400,000 USD

**Location:** China

**LOA:** 80' 7" (24.56m)

**Beam:** 22.25

**Min Draft:** 5' 3" (1.6m)

**Cruise Speed:** 10 Knots Kts. (12 MPH)

**Max Speed:** 17 Knots Kts. (20 MPH)

Our experienced yacht broker, Andrey Shestakov, will help you choose and buy a yacht that best suits your needs **Black Soil — HORIZON** from our catalogue. Presently, at Shestakov Yacht Sales Inc., we have a wide variety of yachts available on our sale's list. We also work in close contact with all the big yacht manufacturers from all over the world.

If you would like to buy a yacht **Black Soil — HORIZON** or would like help answering any questions concerning purchasing, selling or chartering a yacht, please call **+1(954)274-4435**

# TABLE OF CONTENTS

TABLE OF CONTENTS	2
SPECIFICATIONS	4
Overview	4
Basic Information	4
Dimensions	4
Speed, Capacities and Weight	4
Accommodations	5
Hull and Deck Information	5
Engine Information	5
PHOTOS	6
Beach Club Bar	6
Beach Club Settee	6
MD Aft	7
MD Aft Dining	7
MD Salon	7
MD Dining	7
MD Lounge	7
MD Bar	7
MD Galley	8
MD Entertainment System	8
MD Stairs to Beach Club	8
MD Master Cabin	8
MD Master Suite	8
MD Master Makeup Counter	9
MD Master Settee	9
LD VIP Cabin	9
LD VIP Suite	9
LD Guest Double Cabin	9

LD Guest Double Suite	9
LD Foyer w/ Laundry Facility	10
LD Guests Twin Cabin	10
MD Stairs Up to Skylounge	10
UD Stairs	10
UD Aft Wet Bar	11
UD Aft	11
UD Jacuzzi	11
UD Davit Crane	11
UD Salon	11
UD Skylounge	11
UD Helm Station	12
Fore Deck Lounge	12
Fore Deck Settee	12
MD Port Side Day Head	12
MD Port Side Day Head	12
Beach Club	13
Tender on Swim Platform	13
Crew Corridor	13
Crew Quarter	13
Crew Bathroom	14
Engine Room	14
Stairs to MD Aft	14
CONTACTS	16
Contact details	16
Telephones	16
Office hours	16
Address	16

---

# SPECIFICATIONS

---

## Overview

---

Semi custom yacht built by Horizon Yachts.

Highlights of the FD80:

- Beach club on stern
- Main deck master suite
- Bow sunbed and lounge
- Upper deck aft jacuzzi

## Basic Information

---

**Category:** expedition yacht

**Sub Category:** Expedition or Explorer

**Model Year:** 2021

**Year Built:** 2020

**Country:** China

## Dimensions

---

**LOA:** 80' 7" (24.56mm)

**LWL:** 70' (21.34mm)

**Beam:** 22.25

**Min Draft:** 5' 3" (1.6mm)

## Speed, Capacities and Weight

---

**Cruise Speed:** 10 Knots Kts. (12 MPH)

**Cruise Speed Range:** 1700

**Max Speed:** 17 Knots Kts. (20 MPH)

**Gross Tonnage:** 145 Pounds

**Water Capacity:** 1514 Gallons

**Holding Tank:** 100.39 Gal Gallons

**Fuel Capacity:** 2699.84 Gal Gallons

---

## Accommodations

---

**Total Cabins:** 4

**Total Berths:** 8

**Sleeps:** 8

**Total Heads:** 5

**Crew Cabin:** 2

**Crew Berths:** 2

**Crew Heads:** 1

---

## Hull and Deck Information

---

**Hull Material:** Fiberglass

**Deck Material:** Teak and Fiberglass

**Hull Configuration:** Fast Displacement Hull

**Hull Color:** White

**Hull Designer:** Cor D. Rover Design

**Exterior Designer:** Cor D. Rover Design

**Interior Designer:** Horizon Yachts

---

## Engine Information

---

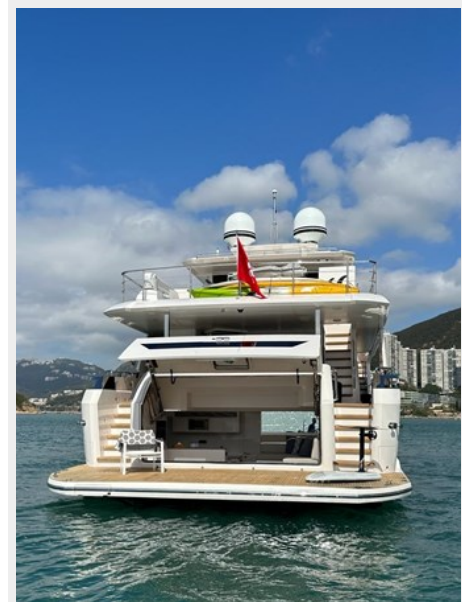
**Engines:** 2

**Manufacturer:** MAN

**Engine Type:** Inboard

**Fuel Type:** Diesel

# PHOTOS



**Beach Club Bar**



**Beach Club Settee**

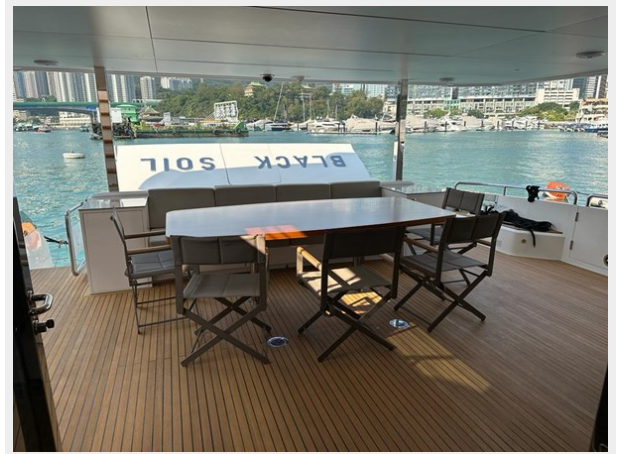




**MD Aft**



**MD Aft Dining**



**MD Salon**



**MD Dining**



**MD Lounge**



**MD Bar**





**MD Galley**



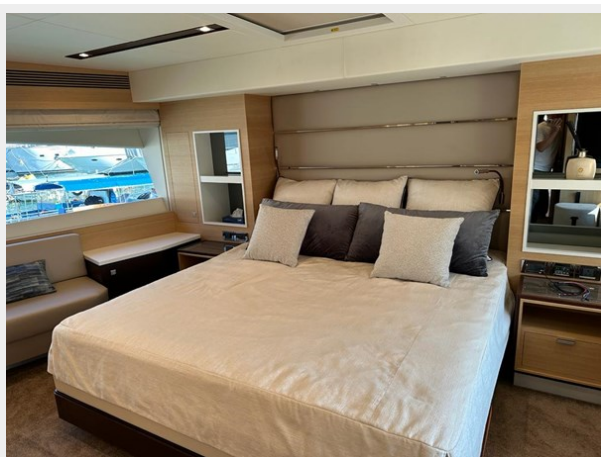
**MD Entertainment System**



**MD Stairs to Beach Club**



**MD Master Cabin**



**MD Master Suite**





**MD Master Makeup Counter**



**MD Master Settee**



**LD VIP Cabin**



**LD VIP Suite**



**LD Guest Double Cabin**



**LD Guest Double Suite**



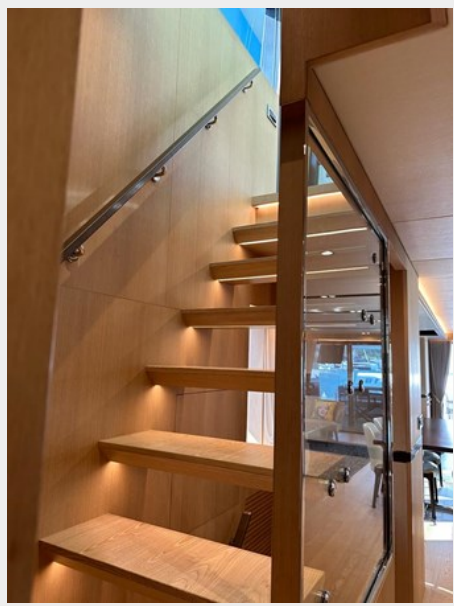
**LD Guests Twin Cabin**



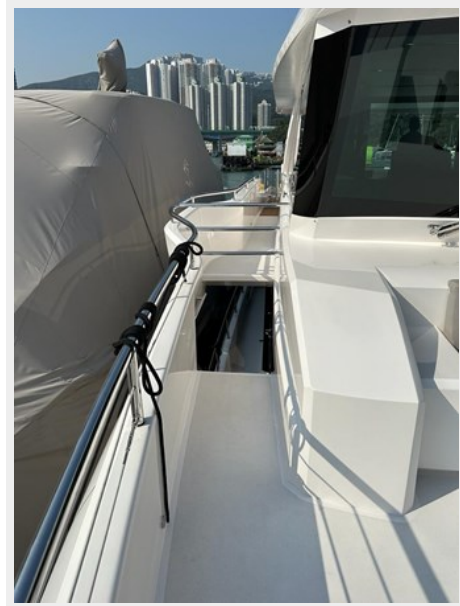
**LD Foyer w/ Laundry Facility**



**MD Stairs Up to Skylounge**



**UD Stairs**





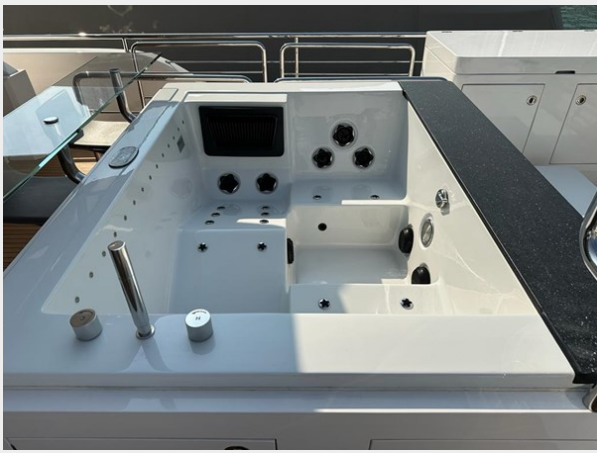
**UD Aft Wet Bar**



**UD Aft**



**UD Jacuzzi**



**UD Davit Crane**



**UD Salon**



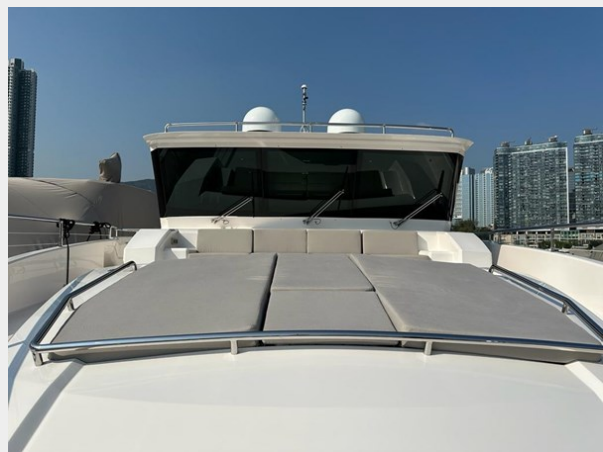
**UD Skylounge**



**UD Helm Station**



**Fore Deck Lounge**



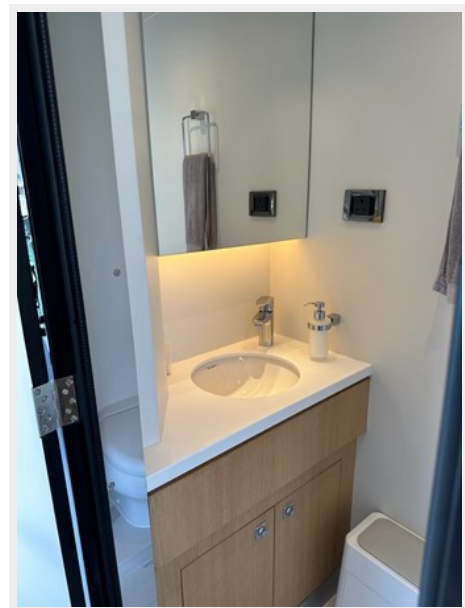
**Fore Deck Settee**



**MD Port Side Day Head**



**MD Port Side Day Head**





**Beach Club**



**Tender on Swim Platform**



**Crew Corridor**



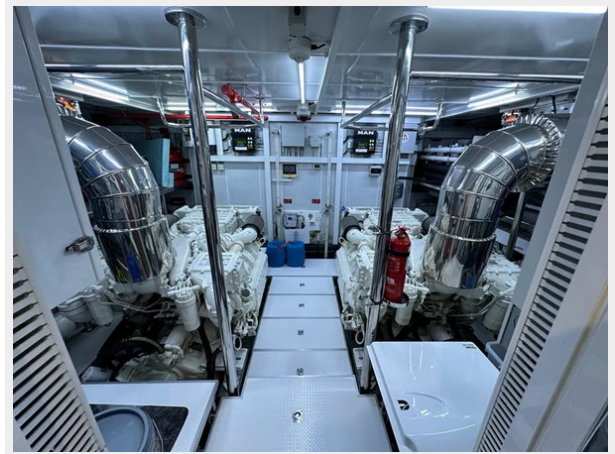
**Crew Quarter**



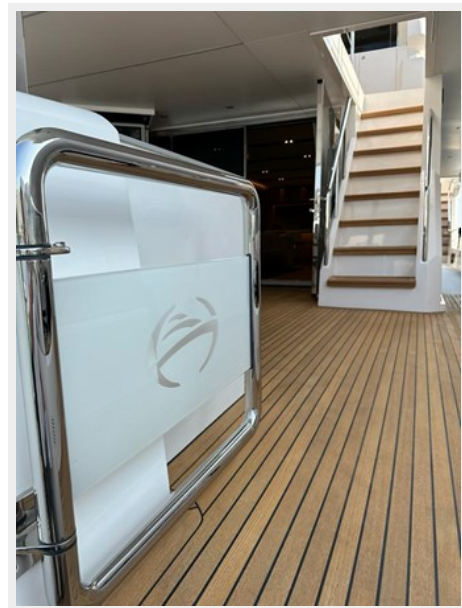
### Crew Bathroom



### Engine Room



### Stairs to MD Aft





# CONTACTS

---

Andrey Shestakov, leading yacht broker of the sales department of Shestakov Yacht Sales Inc. Shestakov Yacht Sales Inc., the official representative of the Miami/Fort Lauderdale FL headquarters.

## Contact details

---

Email: [andrey@shestakovyachtsales.com](mailto:andrey@shestakovyachtsales.com)

Web: [shestakovyachtsales.com/en/](http://shestakovyachtsales.com/en/)

## Telephones

---

USA: +1(954)274-4435

## Office hours

---

Monday – Saturday: **9:00 - 21:00** EDT

Sunday: **closed**

## Address

---



Harbour Towne Marina, 850 NE 3rd St,  
STE 213, Dania, FL 33004