

## BOMBADIL III — PERSHING



**Builder:** PERSHING

**Year Built:** 2021

**Model:** Flybridge

**Price:** PRICE ON APPLICATION

**Location:** Spain

**LOA:** 92' 2" (28.09mm)

**Beam:** 20.43

**Min Draft:** 5' (1.52mm)

**Max Draft:** 5' (1.52mm)

**Cruise Speed:** 35 Knots Kts. (40 MPH)

**Max Speed:** 42 Knots Kts. (48 MPH)

Our experienced yacht broker, Andrey Shestakov, will help you choose and buy a yacht that best suits your needs **BOMBADIL III — PERSHING** from our catalogue. Presently, at Shestakov Yacht Sales Inc., we have a wide variety of yachts available on our sale's list. We also work in close contact with all the big yacht manufacturers from all over the world.

If you would like to buy a yacht **BOMBADIL III — PERSHING** or would like help answering any questions concerning purchasing, selling or chartering a yacht, please call **+1(954)274-4435**

# TABLE OF CONTENTS

TABLE OF CONTENTS	2
SPECIFICATIONS	4
Overview	4
Basic Information	4
Dimensions	4
Speed, Capacities and Weight	5
Accommodations	5
Hull and Deck Information	5
Engine Information	5
PHOTOS	6
Aft deck	7
Sundeck/flybridge	7
Forward sunbathing/seating-dining	7
Aft deck	7
Aft deck detail	8
Aft deck	8
Aft deck dining	8
Afr deck dining	8
Aft deck sunbathing	8
Sun deck- dining/sunbathing/flybridge	8
Sun deck	9
Sun deck- flybridge	9
Sun deck- flybridge	9
Sun deck- flybridge	9
Forward seating/dining/sunlounging	9
Forward seating/dining	10
Forward- seating/sunlounging	10
Side deck	10

Salon	10
Salon with 'disappearing window' down to give inside/outside flow	10
Salon	10
Main salon detail	11
Master cabin	11
Master cabin	11
Master cabin desk	11
Master cabin bath	11
Double cabin	11
Double cabin	12
Double cabin bath	12
Twin cabin	12
Twin cabin	12
Stairway lower deck to main deck	13
Bridge	13
Bridge	13
Bridge detail	13
Miele washing appliances	14
Crew	14
Passageway crew quarters to main deck	14
Engine room	14
<b>CONTACTS</b>	<b>15</b>
Contact details	15
Telephones	15
Office hours	15
Address	15

---

# SPECIFICATIONS

---

## Overview

---

BOMBADIL III is a very highly specified example of the recently introduced and very popular 9X series built by Pershing, a renowned leading builder of sports yachts. Within her sleek maxi coupe lines she combines voluminous interior spaces with a multiple of outside relaxing areas, the latest technologies and exhilarating performance at the very top of her class.

A signature touch is her 'disappearing window' between the aft deck and salon which when lowered creates a large, seamless indoor/outdoor space on the main deck.

BOMBADIL III's sole discerning owner since new has used her for two seasons of light private use and maintained her as new.

BOMBADIL III represents an excellent opportunity to purchase an as new 9X at huge discount to replacement cost.

---

## Basic Information

---

**Category:** Flybridge

**Sub Category:** Flybridge

**Model Year:** 2022

**Year Built:** 2021

**Country:** Spain

---

## Dimensions

---

**LOA:** 92' 2" (28.09mm)

**Beam:** 20.43

**Min Draft:** 5' (1.52mm)

**Max Draft:** 5' (1.52mm)

---

## Speed, Capacities and Weight

---

**Cruise Speed:** 35 Knots Kts. (40 MPH)

**Cruise Speed Range:** 350

**Max Speed:** 42 Knots Kts. (48 MPH)

**Max Speed Range:** 300 Kts.

**Water Capacity:** 1500 Gallons

**Holding Tank:** 132.09 Gal Gallons

**Fuel Capacity:** 2377.55 Gal Gallons

---

## Accommodations

---

**Total Cabins:** 4

**Total Berths:** 8

**Sleeps:** 8

**Total Heads:** 4

**Crew Cabin:** 4

**Crew Berths:** 4

**Crew Heads:** 2

---

## Hull and Deck Information

---

**Hull Material:** Fiberglass

**Deck Material:** Teak

**Hull Configuration:** Deep Vee

**Hull Color:** Silver

**Hull Designer:** Fulvio De Simoni

**Exterior Designer:** Pershing

**Interior Designer:** Pershing

---

## Engine Information

---

**Engines:** 2

**Manufacturer:** MTU

**Engine Type:** Inboard

**Fuel Type:** Diesel

# PHOTOS



**Aft deck**



**Sundeck/flybridge**



**Forward sunbathing/seating-dining**



**Aft deck**



**Aft deck detail**



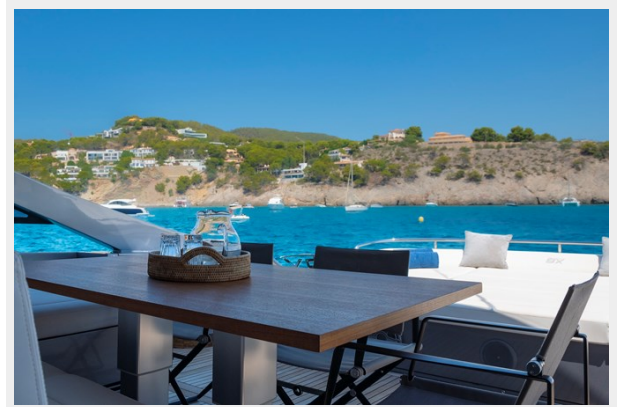
**Aft deck**



**Aft deck dining**



**Afr deck dining**



**Aft deck sunbathing**



**Sun deck- dining/sunbathing/flybridge**





Sun deck



Sun deck- flybridge



Sun deck- flybridge



Sun deck- flybridge



Forward seating/dining/sunlounging



**Forward seating/dining**



**Forward- seating/sunlounging**



**Side deck**



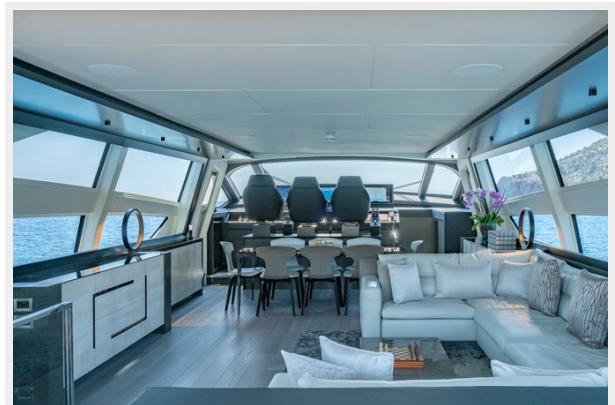
**Salon**



**Salon with 'disappearing window' down to give inside/outside flow**



**Salon**



**Main salon detail**



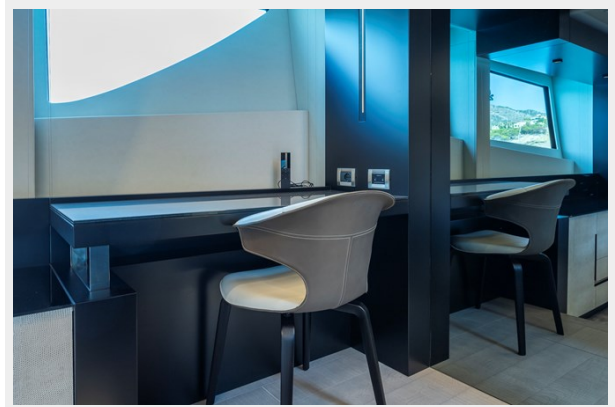
**Master cabin**



**Master cabin**



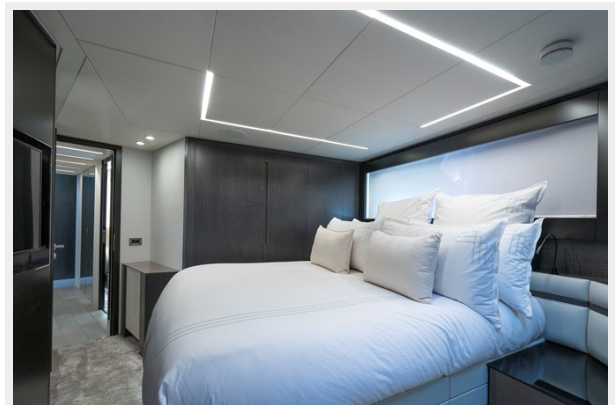
**Master cabin desk**



**Master cabin bath**



**Double cabin**



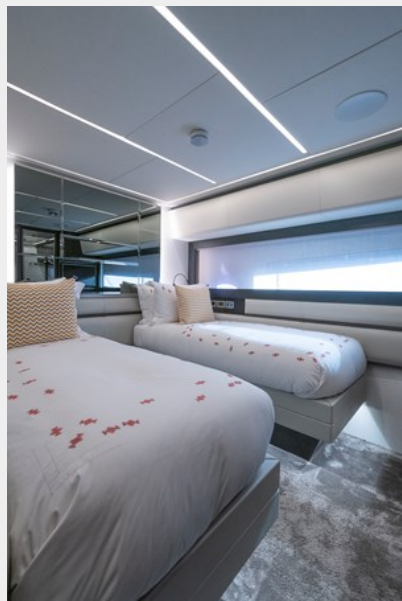
**Double cabin**



**Double cabin bath**



**Twin cabin**



**Twin cabin**



### Stairway lower deck to main deck



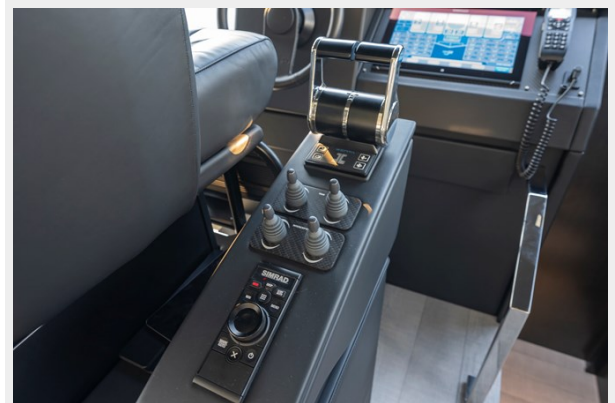
### Bridge



### Bridge

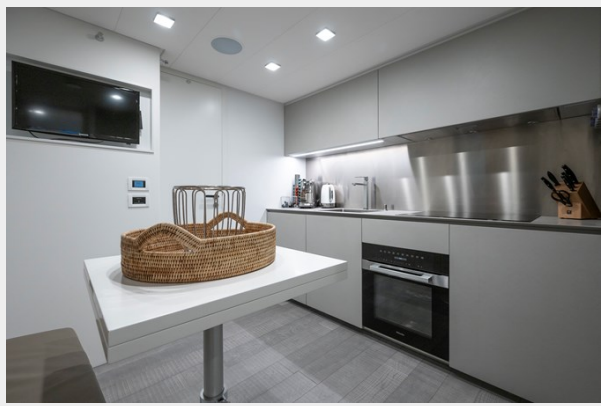


### Bridge detail

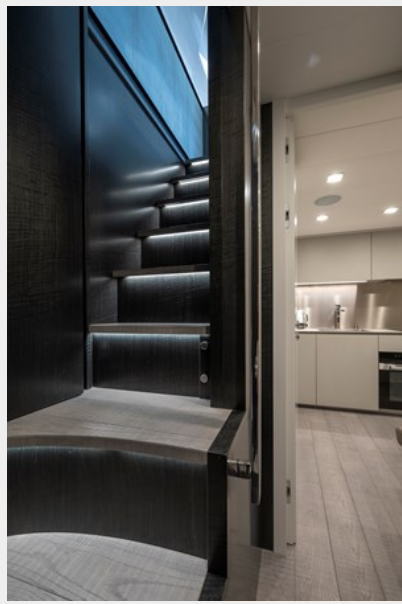


### Miele washing appliances

#### Crew



#### Passageway crew quarters to main deck



#### Engine room



# CONTACTS

---

Andrey Shestakov, leading yacht broker of the sales department of Shestakov Yacht Sales Inc. Shestakov Yacht Sales Inc., the official representative of the Miami/Fort Lauderdale FL headquarters.

## Contact details

---

Email: [andrey@shestakovyachtsales.com](mailto:andrey@shestakovyachtsales.com)

Web: [shestakovyachtsales.com/en/](http://shestakovyachtsales.com/en/)

## Telephones

---

USA: +1(954)274-4435

## Office hours

---

Monday – Saturday: **9:00 - 21:00** EDT

Sunday: **closed**

## Address

---



Harbour Towne Marina, 850 NE 3rd St,  
STE 213, Dania, FL 33004