

25 FS CC REGULATOR — REGULATOR



Builder: REGULATOR

Year Built: 2014

Model: Sport Fisherman

Price: PRICE ON APPLICATION

Location: United States

LOA: 25' (7.62mm)

Beam: 8.83

Min Draft: 2' (0.61mm)

Max Draft: 2' 9" (0.84mm)

Cruise Speed: 28 Knots Kts. (32 MPH)

Max Speed: 45 Knots Kts. (52 MPH)

Our experienced yacht broker, Andrey Shestakov, will help you choose and buy a yacht that best suits your needs **25 FS CC Regulator — REGULATOR** from our catalogue. Presently, at Shestakov Yacht Sales Inc., we have a wide variety of yachts available on our sale's list. We also work in close contact with all the big yacht manufacturers from all over the world.

If you would like to buy a yacht **25 FS CC Regulator — REGULATOR** or would like help answering any questions concerning purchasing, selling or chartering a yacht, please call **+1(954)274-4435**

TABLE OF CONTENTS

TABLE OF CONTENTS	2
SPECIFICATIONS	4
Overview	4
Basic Information	4
Dimensions	4
Speed, Capacities and Weight	4
Accommodations	4
Hull and Deck Information	4
Engine Information	5
PHOTOS	6
003 - White Yamaha cowling mounted on bracket	6
002 - Bow profile	6
004 - Profile on boatlift	6
005 - Forward seating	6
006 - Aft view from bow	7
007 - Hardtop	7
008 - Helm seats	7
009 - Helm	7
010 - Seats with bolsters down	7
011 - Garmin 1242xsv plus	7
012 - Curved plex windshield and magnetic compass	8
013 - Tilttable helm wheel with speed knob	8
014 - White powder coating and LED hardtop lights	8
015 - Sidewinder outriggers and track for enclosure	8
017 - Transom livewell	8
016 - Cockpit	8
018 - Transom fishbox	9
019 - Fold down rear bench seat (1)	9

Underside hardtop color matched to hull sides	9
020 - Fresh water shower hose	9
022 - Rocket launcher, tackle cabinet	9
Tackle box shelves	9
024 - Forward console seat	10
Cooler beneath forward console seat	10
026 - Cushion for forward seating are indoor stored when not in use	10
027 - Full coaming pads, opening portlight to beneath console	10
028 - Huge fishbox (or rod storage) beneath forward seating deck	10
Freshwater head beneath console	10
Batteries	11
Aft bilge	11
Trim tabs	11
Yamaha engine covers	11
Factory hardtop with antenna and lights on pivot mounts	11
Deck view from aft corner	11
Helm has drink holders and glovebox	12
Yamaha with low hours and recent service	12
Easy cruise at 30+ knots	12
Attractive shear line	12
No bottom paint, always lift kept	12
Sharp entry = good ride	12
Layout diagram	13
CONTACTS	14
Contact details	14
Telephones	14
Office hours	14
Address	14

SPECIFICATIONS

Overview

A meticulously cared for boat in superior condition, owned by a single person and with remarkably low usage hours (245). This was a bespoke order featuring a unique hull color - Moon Dust - complimented by Navy blue striping.

Basic Information

Category: Sport Fisherman

Model Year: 2014

Year Built: 2014

Country: United States

Dimensions

LOA: 25' (7.62mm)

Beam: 8.83

Min Draft: 2' (0.61mm)

Max Draft: 2' 9" (0.84mm)

Speed, Capacities and Weight

Cruise Speed: 28 Knots Kts. (32 MPH)

Max Speed: 45 Knots Kts. (52 MPH)

Water Capacity: 21 Gallons

Holding Tank: 10 Gal Gallons

Fuel Capacity: 160 Gal Gallons

Accommodations

Total Heads: 1

Hull and Deck Information

Hull Material: Fiberglass

Hull Configuration: Deep Vee

Engine Information

Engines: 2

Manufacturer: Yamaha

Engine Type: Outboard

Fuel Type: Gas/Petrol

PHOTOS

002 - Bow profile



003 - White Yamaha cowling mounted on bracket



004 - Profile on boatlift



005 - Forward seating



006 - Aft view from bow



007 - Hardtop



008 - Helm seats



009 - Helm



010 - Seats with bolsters down



011 - Garmin 1242xsv plus



012 - Curved plex windshield and magnetic compass



013 - Tiltable helm wheel with speed knob



014 - White powder coating and LED hardtop lights



015 - Sidewinder outriggers and track for enclosure



016 - Cockpit



017 - Transom livewell



018 - Transom fishbox



019 - Fold down rear bench seat (1)



020 - Fresh water shower hose



Underside hardtop color matched to hull sides



022 - Rocket launcher, tackle cabinet



Tackle box shelves



024 - Forward console seat



Cooler beneath forward console seat



026 - Cushion for forward seating are indoor stored when not in use



027 - Full coaming pads, opening portlight to beneath console



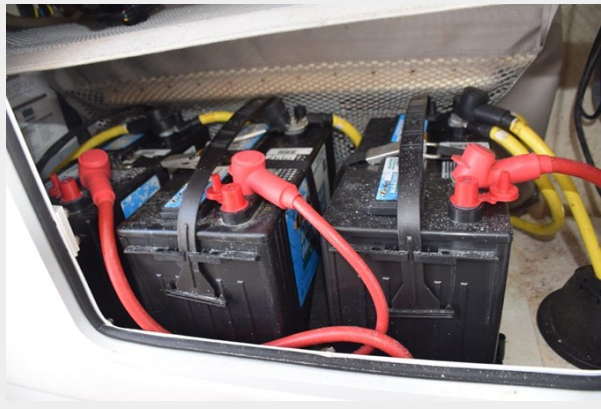
028 - Huge fishbox (or rod storage) beneath forward seating deck



Freshwater head beneath console



Batteries



Aft bilge



Trim tabs



Yamaha engine covers



Factory hardtop with antenna and lights on pivot mounts



Deck view from aft corner



Helm has drink holders and glovebox



Yamaha with low hours and recent service



Easy cruise at 30+ knots



Attractive shear line



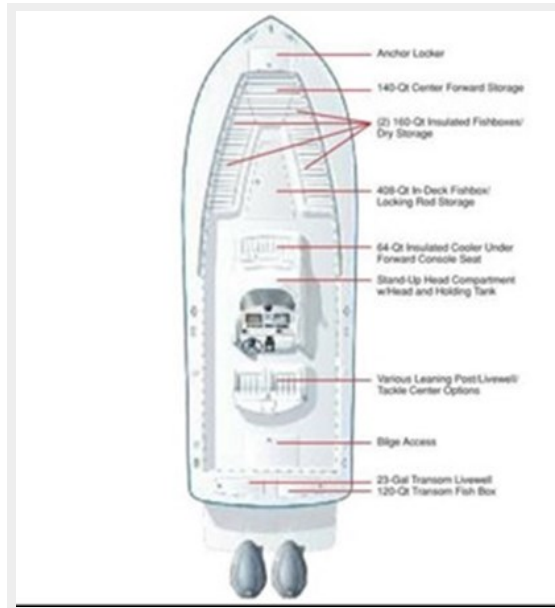
No bottom paint, always lift kept



Sharp entry = good ride



Layout diagram



CONTACTS

Andrey Shestakov, leading yacht broker of the sales department of Shestakov Yacht Sales Inc. Shestakov Yacht Sales Inc., the official representative of the Miami/Fort Lauderdale FL headquarters.

Contact details

Email: andrey@shestakovyachtsales.com

Web: shestakovyachtsales.com/en/

Telephones

USA: +1(954)274-4435

Office hours

Monday – Saturday: **9:00 - 21:00** EDT

Sunday: **closed**

Address



Harbour Towne Marina, 850 NE 3rd St,
STE 213, Dania, FL 33004