

2024 TRUE NORTH 39 OUTBOARD EXPRESS — TRUE NORTH



Builder: TRUE NORTH

Year Built: 2024

Model: cruiser

Price: Price on Application

Location: United States

LOA: 44' (13.41mm)

Beam: 13.5

Min Draft: 2' (0.61mm)

Max Draft: 3' (0.91mm)

Our experienced yacht broker, Andrey Shestakov, will help you choose and buy a yacht that best suits your needs **2024 True North 39 Outboard Express — TRUE NORTH** from our catalogue. Presently, at **Shestakov Yacht Sales Inc.**, we have a wide variety of yachts available on our sale's list. We also work in close contact with all the big yacht manufacturers from all over the world.

If you would like to buy a yacht **2024 True North 39 Outboard Express — TRUE NORTH** or would like help answering any questions concerning purchasing, selling or chartering a yacht, please call **+1(954)274-4435**

TABLE OF CONTENTS

| | |
|------------------------------------|---|
| TABLE OF CONTENTS | 2 |
| SPECIFICATIONS | 3 |
| Overview | 3 |
| Basic Information | 3 |
| Dimensions | 3 |
| Speed, Capacities and Weight | 3 |
| Accommodations | 3 |
| Hull and Deck Information | 4 |
| Engine Information | 4 |
| PHOTOS | 5 |
| 815844 | 5 |
| 8158441_20211213125532870_1_XLARGE | 5 |
| CONTACTS | 6 |
| Contact details | 6 |
| Telephones | 6 |
| Office hours | 6 |
| Address | 6 |

SPECIFICATIONS

Overview

New for 2022, the True North 39 Outboard Express features the timeless and rugged beauty of Down East workboats. Every True North has a well-earned reputation of being able to handle even the roughest conditions. Their sophisticated "open-concept" interiors are as comfortable as they are functional. The 39 Outboard Express, features a long list of options that will allow you to enjoy and experience your surroundings like no other boat on the water. Contact us to learn more about these elegant adventurers.

Basic Information

| | |
|------------------------|------------------------|
| Category: cruiser | Sub Category: Downeast |
| Model Year: 2024 | Year Built: 2024 |
| Country: United States | |

Dimensions

| | |
|------------------------|------------------------|
| LOA: 44' (13.41mm) | LWL: 38' 6" (11.73mm) |
| Beam: 13.5 | Min Draft: 2' (0.61mm) |
| Max Draft: 3' (0.91mm) | |

Speed, Capacities and Weight

| | |
|--------------------------------|------------------------------|
| Water Capacity: 100 Gallons | Holding Tank: 30 Gal Gallons |
| Fuel Capacity: 400 Gal Gallons | |

Accommodations

| | |
|-----------------|-----------------|
| Total Cabins: 2 | Total Berths: 2 |
| Total Heads: 1 | |

Hull and Deck Information

Hull Material: Fiberglass

Engine Information

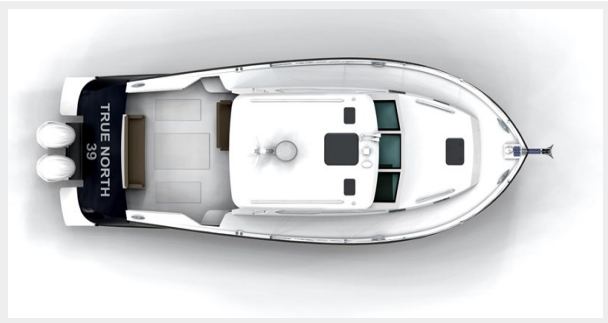
| | |
|------------------------------|-----------------------------|
| Engines: 2 | Manufacturer: Suzuki |
| Engine Type: Outboard | Fuel Type: Gas |

PHOTOS

815844



8158441_20211213125532870_1_XLARGE



CONTACTS

Andrey Shestakov, leading yacht broker of the sales department of Shestakov Yacht Sales Inc. Shestakov Yacht Sales Inc., the official representative of the Miami/Fort Lauderdale FL headquarters.

Contact details

Email: **andrey@shestakovyachtsales.com**

Web: shestakovyachtsales.com/en/

Telephones

USA: **+1(954)274-4435**

Office hours

Monday – Saturday: **9:00 - 21:00 EDT**

Sunday: **closed**

Address



Harbour Towne Marina, 850 NE 3rd St,
STE 213, Dania, FL 33004