

2013 REGAL 3550 CUDDY — REGAL



Builder: REGAL

Year Built: 2013

Model: Cuddy

Price: \$129,900 USD

Location: United States

LOA: 34' 8" (10.57mm)

Beam: 11.33

Min Draft: 1' 9" (0.53mm)

Max Draft: 2' 11" (0.89mm)

Our experienced yacht broker, Andrey Shestakov, will help you choose and buy a yacht that best suits your needs **2013 Regal 3550 Cuddy — REGAL** from our catalogue. Presently, at Shestakov Yacht Sales Inc., we have a wide variety of yachts available on our sale's list. We also work in close contact with all the big yacht manufacturers from all over the world.

If you would like to buy a yacht **2013 Regal 3550 Cuddy — REGAL** or would like help answering any questions concerning purchasing, selling or chartering a yacht, please call **+1(954)274-4435**

TABLE OF CONTENTS

TABLE OF CONTENTS	2
SPECIFICATIONS	3
Overview	3
Basic Information	3
Dimensions	3
Speed, Capacities and Weight	3
Accommodations	4
Hull and Deck Information	4
Engine Information	4
PHOTOS	5
CONTACTS	12
Contact details	12
Telephones	12
Office hours	12
Address	12

SPECIFICATIONS

Overview

2013 Regal 3550 Cuddy This beautiful black hulled Regal 3550 owes it's legacy to Formula's famed Super Sport line. Sporty lines, fast cruise, and fantastic handling both at sea and around the dock define this craft with the overnight accommodations of a cruiser. Aft is a huge cockpit with seating space for your 10 guests as well as comfortable helm and passenger seating facing forward for underway. A wet bar port and Isotherm cockpit fridge to starboard. The helm is also equipped with Garmin VHF 100 and Garmin GPX XSV 7, multifunction display unit with sounder. Bennet Trim Tabs, AC, microwave, shore power, TV, Fusion Marine stereo with helm remotes, cockpit cover, swim platform with boarding ladder and Aqua Deck, underwater lights, teak and holly sole in cabin, transom shower, head/shower below, electric engine hatch lift. Twin Volvo duo prop outdrive with joystick controller for ease of handling at the dock. New for 2023: Manifolds and Risers, Alternator, Underwater Lighting, Steering Control System as well as many other items. Well maintained twin Volvo-Penta 5.7L V8's 320 HP (322 hrs) on Volvo DP drives.

Basic Information

Category: Cuddy

Sub Category: Cuddy

Model Year: 2013

Year Built: 2013

Country: United States

Dimensions

LOA: 34' 8" (10.57mm)

Beam: 11.33

Min Draft: 1' 9" (0.53mm)

Max Draft: 2' 11" (0.89mm)

Speed, Capacities and Weight

Water Capacity: 30 Gallons

Holding Tank: 18 Gal Gallons

Fuel Capacity: 186 Gal Gallons

Accommodations

Total Berths: 2

Total Heads: 1

Hull and Deck Information

Hull Material: Fiberglass

Hull Configuration: Deep Vee

Engine Information

Engines: 1

Manufacturer: Volvo Penta

Engine Type: I/O

Fuel Type: Gas

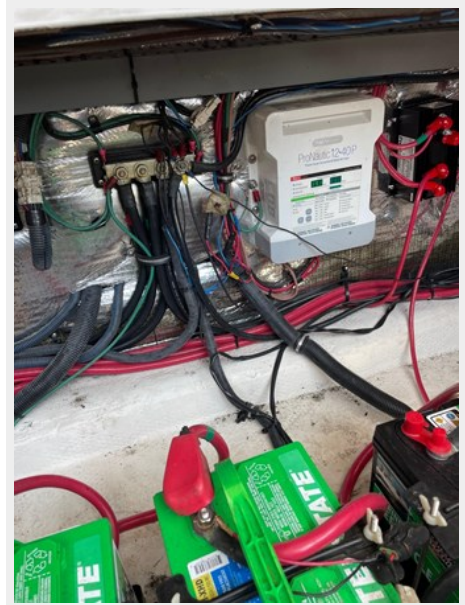
PHOTOS















CONTACTS

Andrey Shestakov, leading yacht broker of the sales department of Shestakov Yacht Sales Inc. Shestakov Yacht Sales Inc., the official representative of the Miami/Fort Lauderdale FL headquarters.

Contact details

Email: andrey@shestakovyachtsales.com

Web: shestakovyachtsales.com/en/

Telephones

USA: +1(954)274-4435

Office hours

Monday – Saturday: **9:00 - 21:00** EDT

Sunday: **closed**

Address



Harbour Towne Marina, 850 NE 3rd St,
STE 213, Dania, FL 33004