

SEA MONSTER — SEAWORTHY



Builder: SEAWORTHY

Year Built: 1986

Model: Pilothouse

Price: \$159,900 USD

Location: United States

LOA: 32' (9.75m)

Beam: 11.5

Cruise Speed: 15 Knots Kts. (17 MPH)

Our experienced yacht broker, Andrey Shestakov, will help you choose and buy a yacht that best suits your needs **Sea Monster — SEAWORTHY** from our catalogue. Presently, at Shestakov Yacht Sales Inc., we have a wide variety of yachts available on our sale's list. We also work in close contact with all the big yacht manufacturers from all over the world.

If you would like to buy a yacht **Sea Monster — SEAWORTHY** or would like help answering any questions concerning purchasing, selling or chartering a yacht, please call **+1(954)274-4435**

TABLE OF CONTENTS

TABLE OF CONTENTS	2
SPECIFICATIONS	3
Overview	3
Basic Information	4
Dimensions	4
Speed, Capacities and Weight	4
Accommodations	4
Hull and Deck Information	4
Engine Information	4
PHOTOS	5
CONTACTS	10
Contact details	10
Telephones	10
Office hours	10
Address	10

SPECIFICATIONS

Overview

Having dreams of catching your first or next giant tuna? This solidly built pilot house BHM has been completely updated within the past two years from bow to stern. Almost everything has been replaced including 2021 Caterpillar 3116 engine with 220 hours, Phasor 4.5KW generator, pilothouse, deck, thru hulls, wiring and 3 bilge pumps. Also completed were the 2 new aluminum 70 gallon fuel tanks installed and 2 original 70 gallon fiberglass fuel tanks were pulled and cleaned and reinstalled, addition of rear helm, livewell, under gunnel lights, Bomar Stainless hatches in cockpit, 2 in-deck fish boxes and 1 deck fish box, etc. This is the same model as the famous "Wicked Pissah" of the television show, Wicked Tuna. Now's your chance to be the next Wicked Pissah, whether you want to do it for fun or for work.

- Caterpillar 3116, 350hp with 220 hours (replaced July 2021)
- Garmin 4212 XSV with thru hull transducer
- Garmin 24" Fantom Radar
- Garmin Autopilot
- Icom VHF radios (2)
- XM Sirius Weather
- AM/FM radio
- Keurig coffeemaker
- LectraSan head
- 30 amp shore power
- 30 amp electric reel outlet
- 70 amp electric Bandit reel outlet
- 3 GFI 110v outlets in cabin
- Wireless Man-Over-Board system for single handed operation

Basic Information

Category: Pilothouse

Sub Category: Pilothouse

Model Year: 1986

Year Built: 1986

Country: United States

Dimensions

LOA: 32' (9.75m)

Beam: 11.5

Speed, Capacities and Weight

Cruise Speed: 15 Knots Kts. (17 MPH)

Fuel Capacity: 280 Gal Gallons

Accommodations

Total Heads: 1

Hull and Deck Information

Hull Material: Fiberglass

Engine Information

Engines: 1

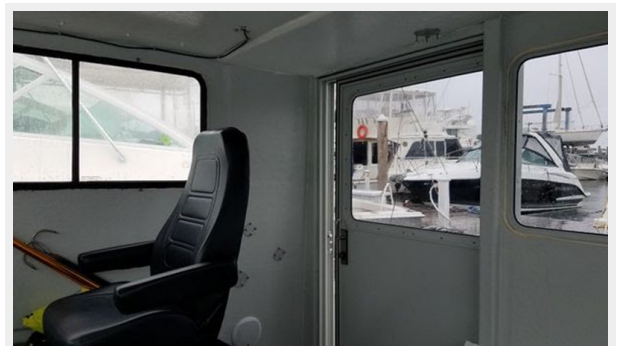
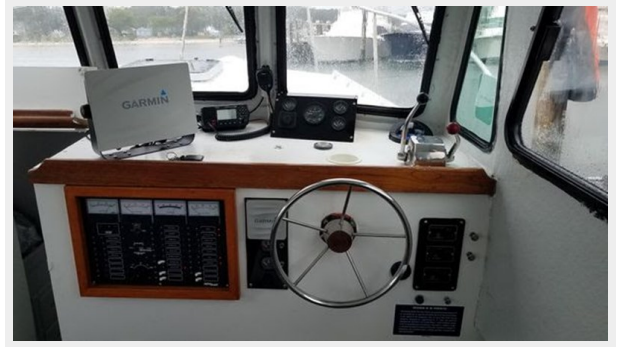
Manufacturer: Caterpillar

Engine Type: Inboard

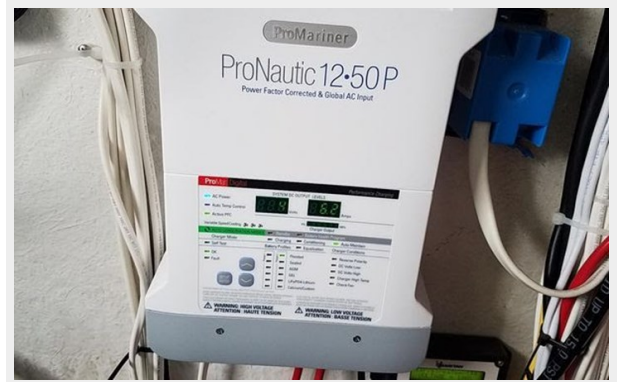
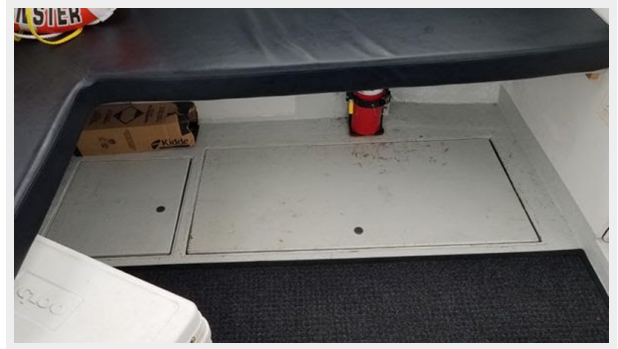
Fuel Type: Diesel

PHOTOS











CONTACTS

Andrey Shestakov, leading yacht broker of the sales department of Shestakov Yacht Sales Inc. Shestakov Yacht Sales Inc., the official representative of the Miami/Fort Lauderdale FL headquarters.

Contact details

Email: andrey@shestakovyachtsales.com

Web: shestakovyachtsales.com/en/

Telephones

USA: +1(954)274-4435

Office hours

Monday – Saturday: **9:00 - 21:00** EDT

Sunday: **closed**

Address



Harbour Towne Marina, 850 NE 3rd St,
STE 213, Dania, FL 33004