

1993 SEA RAY 440 EXPRESS BRIDGE — SEA RAY



Builder: [SEA RAY](#)

Year Built: 1993

Model: cruiser

Price: \$125,900 USD

Location: United States

LOA: 44' (13.41mm)

Beam: 13.91

Max Draft: 3' 5" (1.04mm)

Our experienced yacht broker, Andrey Shestakov, will help you choose and buy a yacht that best suits your needs 1993 Sea Ray 440 Express Bridge — SEA RAY from our catalogue. Presently, at Shestakov Yacht Sales Inc., we have a wide variety of yachts available on our sale's list. We also work in close contact with all the big yacht manufacturers from all over the world.

If you would like to buy a yacht 1993 Sea Ray 440 Express Bridge — SEA RAY or would like help answering any questions concerning purchasing, selling or chartering a yacht, please call **+1(954)274-4435**

TABLE OF CONTENTS

TABLE OF CONTENTS	2
SPECIFICATIONS	3
Overview	3
Basic Information	3
Dimensions	3
Speed, Capacities and Weight	3
Accommodations	4
Hull and Deck Information	4
Engine Information	4
PHOTOS	5
CONTACTS	13
Contact details	13
Telephones	13
Office hours	13
Address	13

SPECIFICATIONS

Overview

This very well maintained and upgraded 1993 Sea Ray 440 Express Bridge has been owned by the same family for the past 10 seasons. This Caterpillar 3208 diesel powered vessel exudes both elegance and functionality. Its sleek design and well crafted features make it a standout choice for those seeking a luxurious boating experience. The yacht's exterior boasts clean lines and a commanding presence, while its spacious bridge, protected by its custom hardtop and full enclosure, offers a panoramic view of the surrounding waters. The layout is optimized for relaxation and entertainment, featuring a fully-equipped gallery, and well appointed sleeping quarters. Its timeless design, efficient power source, and thoughtful amenities make it a remarkable choice for those who value both style and performance on the water.

Basic Information

Category: cruiser

Sub Category: Express

Model Year: 1993

Year Built: 1993

Country: United States

Dimensions

LOA: 44' (13.41mm)

Beam: 13.91

Max Draft: 3' 5" (1.04mm)

Speed, Capacities and Weight

Water Capacity: 100 Gallons

Holding Tank: 60 Gal Gallons

Fuel Capacity: 400 Gal Gallons

Accommodations

Total Cabins: 2

Total Berths: 6

Total Heads: 2

Hull and Deck Information

Hull Material: Fiberglass

Hull Configuration: Deep Vee

Engine Information

Engines: 2

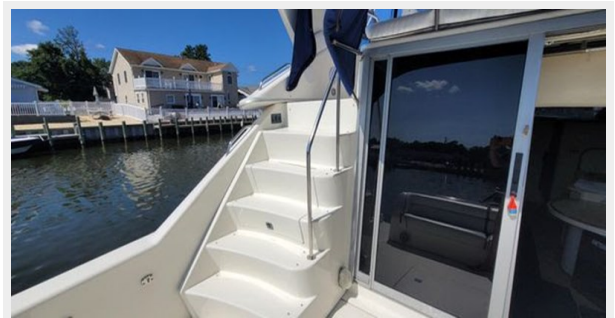
Manufacturer: Caterpillar

Engine Type: Inboard

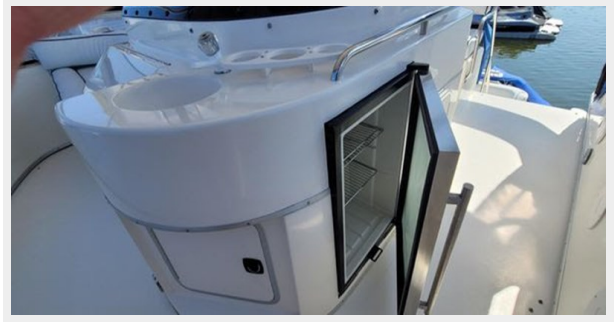
Fuel Type: Diesel

PHOTOS



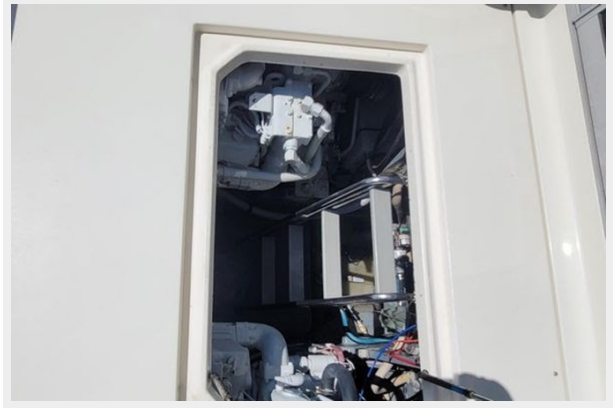
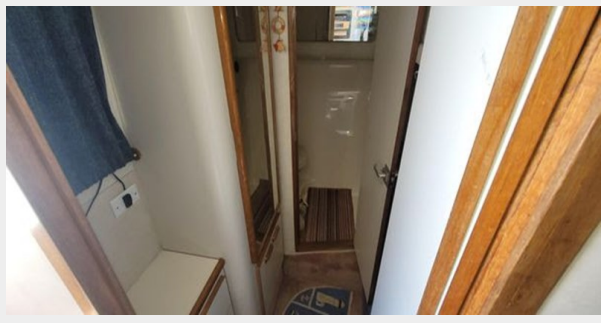














CONTACTS

Andrey Shestakov, leading yacht broker of the sales department of Shestakov Yacht Sales Inc. Shestakov Yacht Sales Inc., the official representative of the Miami/Fort Lauderdale FL headquarters.

Contact details

Email: andrey@shestakovyachtsales.com

Web: shestakovyachtsales.com/en/

Telephones

USA: +1(954)274-4435

Office hours

Monday – Saturday: **9:00 - 21:00** EDT

Sunday: **closed**

Address



Harbour Towne Marina, 850 NE 3rd St,
STE 213, Dania, FL 33004