

## MISS GRACE — HERITAGE YACHTS



**Builder:** HERITAGE YACHTS

**Year Built:** 2001

**Model:** trawler

**Price:** \$159,000 USD

**Location:** United States

**LOA:** 36' (10.97mm)

**Beam:** 12.58

**Min Draft:** 3' 8" (1.12mm)

**Max Draft:** 3' 8" (1.12mm)

**Cruise Speed:** 8 Knots Kts. (9 MPH)

Our experienced yacht broker, Andrey Shestakov, will help you choose and buy a yacht that best suits your needs **Miss Grace — HERITAGE YACHTS** from our catalogue. Presently, at Shestakov Yacht Sales Inc., we have a wide variety of yachts available on our sale's list. We also work in close contact with all the big yacht manufacturers from all over the world.

If you would like to buy a yacht **Miss Grace — HERITAGE YACHTS** or would like help answering any questions concerning purchasing, selling or chartering a yacht, please call **+1(954)274-4435**

---

# TABLE OF CONTENTS

---

TABLE OF CONTENTS	2
SPECIFICATIONS	3
Overview	3
Basic Information	3
Dimensions	3
Speed, Capacities and Weight	3
Accommodations	4
Hull and Deck Information	4
Engine Information	4
PHOTOS	5
CONTACTS	8
Contact details	8
Telephones	8
Office hours	8
Address	8

---

# SPECIFICATIONS

---

## Overview

---

PRICE IMPROVEMENT!!Overview:

Sleeps 4 in two staterooms. Owner stateroom has head with stall shower. Guest stateroom has guest head with hand-held shower. Introduction: Classic two stateroom, dual head, galley down "Sundeck" Trawler with minimal exterior teak.

Vessel Walk through : Guest cabin forward with full width berth, hanging locker, drawer storage and love seat. Aft to port-side down galley and common head to starboard with hand-held shower. Up (3) steps to salon with lower helm and breakfast bar. Starboard-side slider at helm and stair exiting salon port-side aft gains access to walk-around decks and aft Sundeck. Aft from salon to the master stateroom with island queen berth, dual hanging lockers, drawer storage and private head with stall shower.

## Basic Information

---

**Category:** trawler

**Sub Category:** Sundeck

**Model Year:** 2001

**Year Built:** 2001

**Country:** United States

## Dimensions

---

**LOA:** 36' (10.97mm)

**Beam:** 12.58

**Min Draft:** 3' 8" (1.12mm)

**Max Draft:** 3' 8" (1.12mm)

## Speed, Capacities and Weight

---

**Cruise Speed:** 8 Knots Kts. (9 MPH)

**Water Capacity:** 220 Gallons

**Fuel Capacity:** 420 Gal Gallons

---

## Accommodations

---

**Total Cabins:** 2

**Total Berths:** 2

**Total Heads:** 2

---

## Hull and Deck Information

---

**Hull Material:** Fiberglass

**Hull Configuration:** Semi-Displacement

---

## Engine Information

---

**Engines:** 1

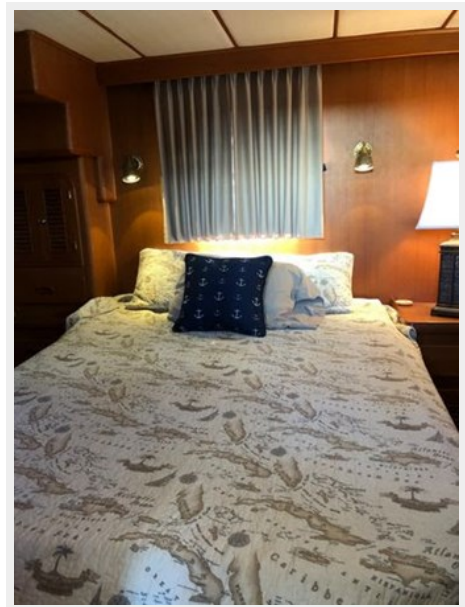
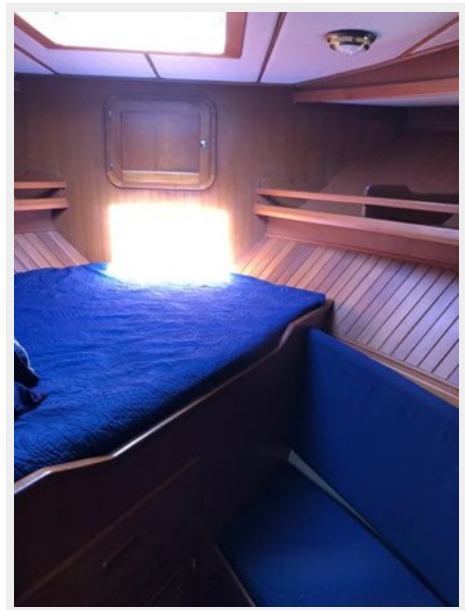
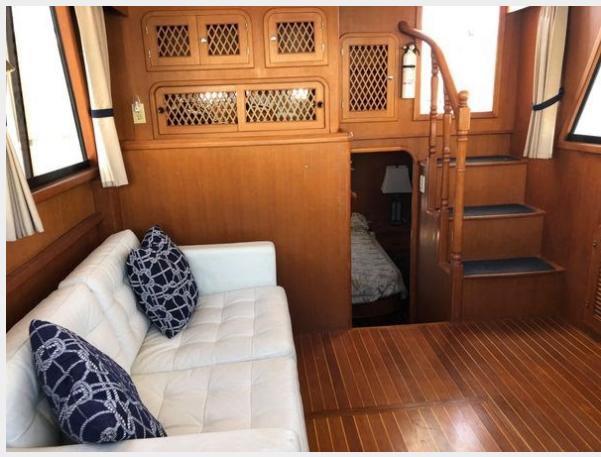
**Manufacturer:** Cummins

**Engine Type:** Inboard

**Fuel Type:** Diesel

# PHOTOS







---

# CONTACTS

---

Andrey Shestakov, leading yacht broker of the sales department of Shestakov Yacht Sales Inc. Shestakov Yacht Sales Inc., the official representative of the Miami/Fort Lauderdale FL headquarters.

---

## Contact details

---

Email: [andrey@shestakovyachtsales.com](mailto:andrey@shestakovyachtsales.com)

Web: [shestakovyachtsales.com/en/](http://shestakovyachtsales.com/en/)

---

## Telephones

---

USA: +1(954)274-4435

---

## Office hours

---

Monday – Saturday: **9:00 - 21:00** EDT

Sunday: **closed**

---

## Address

---



Harbour Towne Marina, 850 NE 3rd St,  
STE 213, Dania, FL 33004