

2001 PARKER 2300 SPECIAL EDITION — PARKER MARINE



Builder: PARKER MARINE

Year Built: 2001

Model: center_console

Price: \$8,727 USD

Location: United States

LOA: 23' (7.01mm)

Beam: 8.5

Min Draft: 0' 10" (0.25mm)

Max Draft: 1' 10" (0.56mm)

Our experienced yacht broker, Andrey Shestakov, will help you choose and buy a yacht that best suits your needs 2001 Parker 2300 Special Edition — PARKER MARINE from our catalogue. Presently, at Shestakov Yacht Sales Inc., we have a wide variety of yachts available on our sale's list. We also work in close contact with all the big yacht manufacturers from all over the world.

If you would like to buy a yacht 2001 Parker 2300 Special Edition — PARKER MARINE or would like help answering any questions concerning purchasing, selling or chartering a yacht, please call +1(954)274-4435

TABLE OF CONTENTS

TABLE OF CONTENTS	2
SPECIFICATIONS	3
Overview	3
Basic Information	3
Dimensions	4
Speed, Capacities and Weight	4
Hull and Deck Information	4
Engine Information	4
PHOTOS	5
CONTACTS	8
Contact details	8
Telephones	8
Office hours	8
Address	8

SPECIFICATIONS

Overview

Discover Excellence in Saltwater Fishing with This Boat with only 400 Hours! This saltwater fishing boat stands out in every sense, offering an outstanding blend of care, performance, and fantastic extras that elevate your fishing experience. Here are the key features that make this vessel a true gem: **Meticulous Maintenance:** The vessel has been meticulously maintained, ensuring it's in top-notch condition. Care and attention to detail are evident throughout. **Powerhouse Engine:** Powered by a newer 2016 Yamaha 250 four-stroke engine with approximately 400 hours and a 4-blade stainless steel prop, this boat delivers a powerful and efficient performance that any angler would appreciate. **Enhanced Navigation:** With the addition of a new 10" Bobs Action Jack, you can confidently navigate shallower waters and enjoy an enhanced ride. This feature expands your fishing horizons and adds versatility to your trips. **Fishing Enhancements:** The boat comes equipped with a range of enhancements designed to elevate your fishing experience:

- A new Sea Star Pro helm and ram provide precise and responsive control.
- The raw water wash-down pump simplifies cleanup and maintenance.
- The Seaclaw #18 anchor ensures reliable anchoring in various conditions.
- New Lenco electric trim tabs further enhance stability and control.
- An Action Welding aluminum boarding ladder adds convenience.
- A stainless steel steering wheel offers durability and a sleek appearance. Two brand new Group 31 AGM batteries guarantee dependable power.

Complete Package: To make your boating experience even better, this boat comes with its 2018 Float tandem axle trailer with aluminum tandem axles and torsion axles. The tires are in excellent condition, ensuring safe and hassle-free transportation. If you're in search of a boat that's not just well-maintained but also packed with features to enhance your fishing adventures, this is the one. Don't miss the chance to make it yours and enjoy exceptional days on the water.

Basic Information

Category: center_console

Sub Category: Center Console

Model Year: 2001

Year Built: 2001

Country: United States

Dimensions

LOA: 23' (7.01mm)

Beam: 8.5

Min Draft: 0' 10" (0.25mm)

Max Draft: 1' 10" (0.56mm)

Speed, Capacities and Weight

Fuel Capacity: 110 Gal Gallons

Hull and Deck Information

Hull Material: Fiberglass

Hull Configuration: Modified V-Hull

Engine Information

Engines: 1

Manufacturer: Yamaha

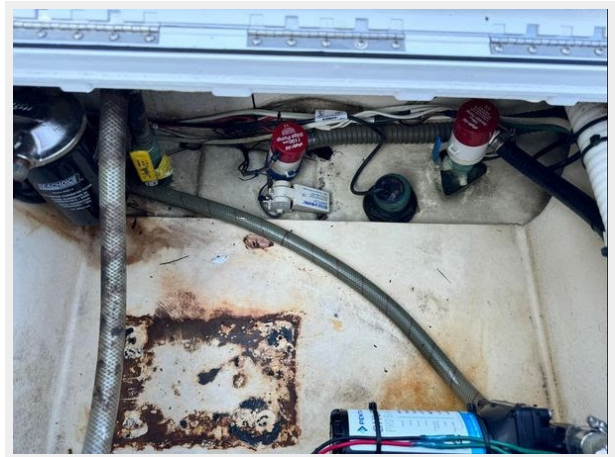
Engine Type: Outboard

Fuel Type: Gas

PHOTOS







CONTACTS

Andrey Shestakov, leading yacht broker of the sales department of Shestakov Yacht Sales Inc. Shestakov Yacht Sales Inc., the official representative of the Miami/Fort Lauderdale FL headquarters.

Contact details

Email: andrey@shestakovyachtsales.com

Web: shestakovyachtsales.com/en/

Telephones

USA: +1(954)274-4435

Office hours

Monday – Saturday: **9:00 - 21:00** EDT

Sunday: **closed**

Address



Harbour Towne Marina, 850 NE 3rd St,
STE 213, Dania, FL 33004