

## PROJECT SECRET — TANKOA YACHTS



**Builder:** TANKOA YACHTS

**Year Built:** 2025

**Model:** Motor Yacht

**Price:** €38,500,000 EUR

**Location:** Italy

**LOA:** 169' (51.5mm)

**Beam:** 29.85

**Min Draft:** 7' 11" (2.4mm)

**Cruise Speed:** 15 Knots Kts. (17 MPH)

**Max Speed:** 18 Knots Kts. (21 MPH)

Our experienced yacht broker, Andrey Shestakov, will help you choose and buy a yacht that best suits your needs **Project Secret — TANKOA YACHTS** from our catalogue. Presently, at Shestakov Yacht Sales Inc., we have a wide variety of yachts available on our sale's list. We also work in close contact with all the big yacht manufacturers from all over the world.

If you would like to buy a yacht **Project Secret — TANKOA YACHTS** or would like help answering any questions concerning purchasing, selling or chartering a yacht, please call **+1(954)274-4435**

# TABLE OF CONTENTS

TABLE OF CONTENTS	2
SPECIFICATIONS	5
Basic Information	5
Dimensions	5
Speed, Capacities and Weight	5
Accommodations	5
Hull and Deck Information	5
Engine Information	6
PHOTOS	7
MY112 Concept renderings 01-06-2021_Page_03_Image_0001	7
MY112 Concept renderings 01-06-2021_Page_02_Image_0001	7
AUG 28_23- FM ARCH _ FULL RENDERING BOOKLET_Page_007_Image_0002	7
AUG 28_23- FM ARCH _ FULL RENDERING BOOKLET_Page_008_Image_0002	7
AUG 28_23- FM ARCH _ FULL RENDERING BOOKLET_Page_013_Image_0002	7
AUG 28_23- FM ARCH _ FULL RENDERING BOOKLET_Page_009_Image_0002	7
AUG 28_23- FM ARCH _ FULL RENDERING BOOKLET_Page_014_Image_0002	8
AUG 28_23- FM ARCH _ FULL RENDERING BOOKLET_Page_020_Image_0002	8
AUG 28_23- FM ARCH _ FULL RENDERING BOOKLET_Page_025_Image_0002	8
AUG 28_23- FM ARCH _ FULL RENDERING BOOKLET_Page_024_Image_0002	8
AUG 28_23- FM ARCH _ FULL RENDERING BOOKLET_Page_026_Image_0002	9
AUG 28_23- FM ARCH _ FULL RENDERING BOOKLET_Page_030_Image_0002	9
AUG 28_23- FM ARCH _ FULL RENDERING BOOKLET_Page_032_Image_0002	9
AUG 28_23- FM ARCH _ FULL RENDERING BOOKLET_Page_031_Image_0002	9
AUG 28_23- FM ARCH _ FULL RENDERING BOOKLET_Page_037_Image_0002	10
AUG 28_23- FM ARCH _ FULL RENDERING BOOKLET_Page_038_Image_0002	10
AUG 28_23- FM ARCH _ FULL RENDERING BOOKLET_Page_039_Image_0002	10
AUG 28_23- FM ARCH _ FULL RENDERING BOOKLET_Page_040_Image_0002	10
AUG 28_23- FM ARCH _ FULL RENDERING BOOKLET_Page_047_Image_0002	10

AUG 28_23- FM ARCH _ FULL RENDERING BOOKLET_Page_048_Image_0002	10
AUG 28_23- FM ARCH _ FULL RENDERING BOOKLET_Page_054_Image_0002	11
AUG 28_23- FM ARCH _ FULL RENDERING BOOKLET_Page_049_Image_0002	11
AUG 28_23- FM ARCH _ FULL RENDERING BOOKLET_Page_056_Image_0002	11
AUG 28_23- FM ARCH _ FULL RENDERING BOOKLET_Page_055_Image_0002	11
AUG 28_23- FM ARCH _ FULL RENDERING BOOKLET_Page_057_Image_0002	11
AUG 28_23- FM ARCH _ FULL RENDERING BOOKLET_Page_062_Image_0002	11
AUG 28_23- FM ARCH _ FULL RENDERING BOOKLET_Page_063_Image_0002	12
AUG 28_23- FM ARCH _ FULL RENDERING BOOKLET_Page_064_Image_0002	12
AUG 28_23- FM ARCH _ FULL RENDERING BOOKLET_Page_067_Image_0002	12
AUG 28_23- FM ARCH _ FULL RENDERING BOOKLET_Page_072_Image_0002	12
AUG 28_23- FM ARCH _ FULL RENDERING BOOKLET_Page_079_Image_0002	13
AUG 28_23- FM ARCH _ FULL RENDERING BOOKLET_Page_078_Image_0002	13
AUG 28_23- FM ARCH _ FULL RENDERING BOOKLET_Page_081_Image_0002	13
AUG 28_23- FM ARCH _ FULL RENDERING BOOKLET_Page_080_Image_0002	13
AUG 28_23- FM ARCH _ FULL RENDERING BOOKLET_Page_083_Image_0002	14
3-4 Aft Zoom - Door Closed	14
Side - Door Closed 2	14
Side Opened 2	14
AUG 28_23- FM ARCH _ FULL RENDERING BOOKLET_Page_090_Image_0002	14
AUG 28_23- FM ARCH _ FULL RENDERING BOOKLET_Page_091_Image_0002	14
AUG 28_23- FM ARCH _ FULL RENDERING BOOKLET_Page_092_Image_0002	15
AUG 28_23- FM ARCH _ FULL RENDERING BOOKLET_Page_098_Image_0002	15
AUG 28_23- FM ARCH _ FULL RENDERING BOOKLET_Page_099_Image_0002	15
AUG 28_23- FM ARCH _ FULL RENDERING BOOKLET_Page_100_Image_0002	15
AUG 28_23- FM ARCH _ FULL RENDERING BOOKLET_Page_101_Image_0002	16
AUG 28_23- FM ARCH _ FULL RENDERING BOOKLET_Page_102_Image_0002	16
AUG 28_23- FM ARCH _ FULL RENDERING BOOKLET_Page_108_Image_0002	16
AUG 28_23- FM ARCH _ FULL RENDERING BOOKLET_Page_107_Image_0002	16

---

AUG 28_23- FM ARCH _ FULL RENDERING BOOKLET_Page_109_Image_0002	17
AUG 28_23- FM ARCH _ FULL RENDERING BOOKLET_Page_114_Image_0002	17
AUG 28_23- FM ARCH _ FULL RENDERING BOOKLET_Page_115_Image_0002	17
AUG 28_23- FM ARCH _ FULL RENDERING BOOKLET_Page_116_Image_0002	17
AUG 28_23- FM ARCH _ FULL RENDERING BOOKLET_Page_118_Image_0002	18
AUG 28_23- FM ARCH _ FULL RENDERING BOOKLET_Page_117_Image_0002	18
AUG 28_23- FM ARCH _ FULL RENDERING BOOKLET_Page_119_Image_0002	18
AUG 28_23- FM ARCH _ FULL RENDERING BOOKLET_Page_124_Image_0002	18
AUG 28_23- FM ARCH _ FULL RENDERING BOOKLET_Page_125_Image_0002	19
AUG 28_23- FM ARCH _ FULL RENDERING BOOKLET_Page_126_Image_0002	19
MY112 Concept renderings 01-06-2021_Page_06_Image_0001	19
MY112 Concept renderings 01-06-2021_Page_07_Image_0001	19
MY112 Concept renderings 01-06-2021_Page_09_Image_0001	19
MY112 Concept renderings 01-06-2021_Page_12_Image_0001	19
SEPT 623- FM ARCH GA - UPDATED BY FLOOR	20
CONTACTS	21
Contact details	21
Telephones	21
Office hours	21
Address	21

---

# SPECIFICATIONS

---

## Basic Information

---

**Category:** Motor Yacht

**Model Year:** 2025

**Year Built:** 2025

**Country:** Italy

## Dimensions

---

**LOA:** 169' (51.5mm)

**Beam:** 29.85

**Min Draft:** 7' 11" (2.4mm)

## Speed, Capacities and Weight

---

**Cruise Speed:** 15 Knots Kts. (17 MPH)

**Max Speed:** 18 Knots Kts. (21 MPH)

**Gross Tonnage:** 499 Pounds

**Water Capacity:** 15000 Gallons

**Holding Tank:** 396.26 Gal Gallons

**Fuel Capacity:** 12838.76 Gal Gallons

## Accommodations

---

**Total Cabins:** 6

**Total Berths:** 8

**Sleeps:** 12

**Total Heads:** 7

## Hull and Deck Information

---

**Hull Material:** Aluminum

**Deck Material:** Teak

**Exterior Designer:** Philippe Briand Yacht Design

**Interior Designer:** FM Architettura

---

## Engine Information

---

**Engines:** 2

**Manufacturer:** MAN

**Engine Type:** Inboard

# PHOTOS

**MY112 Concept renderings 01-06-2021\_Page\_03\_Image\_0001**



**MY112 Concept renderings 01-06-2021\_Page\_02\_Image\_0001**



**AUG 28\_23- FM ARCH \_ FULL RENDERING BOOKLET\_Page\_007\_Image\_0002**



**AUG 28\_23- FM ARCH \_ FULL RENDERING BOOKLET\_Page\_008\_Image\_0002**



**AUG 28\_23- FM ARCH \_ FULL RENDERING BOOKLET\_Page\_009\_Image\_0002**



**AUG 28\_23- FM ARCH \_ FULL RENDERING BOOKLET\_Page\_013\_Image\_0002**



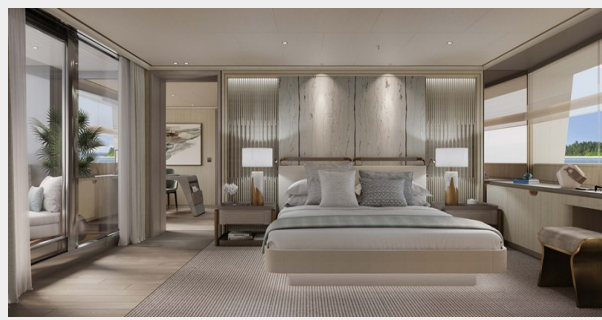
**AUG 28\_23- FM ARCH \_ FULL RENDERING  
BOOKLET\_Page\_014\_Image\_0002**



**AUG 28\_23- FM ARCH \_ FULL RENDERING  
BOOKLET\_Page\_020\_Image\_0002**



**AUG 28\_23- FM ARCH \_ FULL RENDERING  
BOOKLET\_Page\_024\_Image\_0002**



**AUG 28\_23- FM ARCH \_ FULL RENDERING  
BOOKLET\_Page\_025\_Image\_0002**





AUG 28\_23- FM ARCH \_ FULL RENDERING  
BOOKLET\_Page\_026\_Image\_0002



AUG 28\_23- FM ARCH \_ FULL RENDERING  
BOOKLET\_Page\_030\_Image\_0002



AUG 28\_23- FM ARCH \_ FULL RENDERING  
BOOKLET\_Page\_031\_Image\_0002



AUG 28\_23- FM ARCH \_ FULL RENDERING  
BOOKLET\_Page\_032\_Image\_0002



**AUG 28\_23- FM ARCH \_ FULL RENDERING** **AUG 28\_23- FM ARCH \_ FULL RENDERING**  
**BOOKLET\_Page\_037\_Image\_0002** **BOOKLET\_Page\_038\_Image\_0002**



**AUG 28\_23- FM ARCH \_ FULL RENDERING** **AUG 28\_23- FM ARCH \_ FULL RENDERING**  
**BOOKLET\_Page\_039\_Image\_0002** **BOOKLET\_Page\_040\_Image\_0002**



**AUG 28\_23- FM ARCH \_ FULL RENDERING** **AUG 28\_23- FM ARCH \_ FULL RENDERING**  
**BOOKLET\_Page\_047\_Image\_0002** **BOOKLET\_Page\_048\_Image\_0002**



**AUG 28\_23- FM ARCH \_ FULL RENDERING  
BOOKLET\_Page\_049\_Image\_0002**



**AUG 28\_23- FM ARCH \_ FULL RENDERING  
BOOKLET\_Page\_054\_Image\_0002**



**AUG 28\_23- FM ARCH \_ FULL RENDERING  
BOOKLET\_Page\_055\_Image\_0002**



**AUG 28\_23- FM ARCH \_ FULL RENDERING  
BOOKLET\_Page\_056\_Image\_0002**



**AUG 28\_23- FM ARCH \_ FULL RENDERING  
BOOKLET\_Page\_057\_Image\_0002**



**AUG 28\_23- FM ARCH \_ FULL RENDERING  
BOOKLET\_Page\_062\_Image\_0002**



**AUG 28\_23- FM ARCH \_ FULL RENDERING** **AUG 28\_23- FM ARCH \_ FULL RENDERING**  
**BOOKLET\_Page\_063\_Image\_0002** **BOOKLET\_Page\_064\_Image\_0002**



**AUG 28\_23- FM ARCH \_ FULL RENDERING**  
**BOOKLET\_Page\_067\_Image\_0002**



**AUG 28\_23- FM ARCH \_ FULL RENDERING**  
**BOOKLET\_Page\_072\_Image\_0002**



**AUG 28\_23- FM ARCH \_ FULL RENDERING  
BOOKLET\_Page\_079\_Image\_0002**

**AUG 28\_23- FM ARCH \_ FULL RENDERING  
BOOKLET\_Page\_078\_Image\_0002**

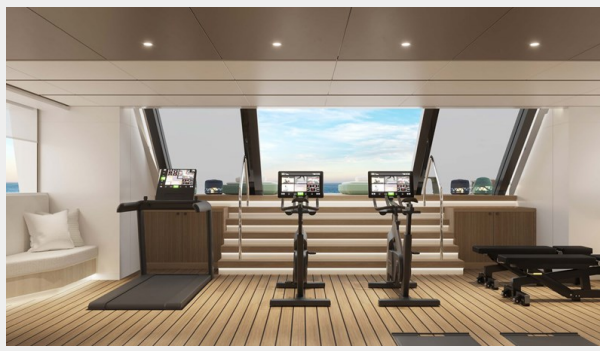


**AUG 28\_23- FM ARCH \_ FULL RENDERING  
BOOKLET\_Page\_081\_Image\_0002**

**AUG 28\_23- FM ARCH \_ FULL RENDERING  
BOOKLET\_Page\_080\_Image\_0002**



**AUG 28\_23- FM ARCH \_ FULL RENDERING  
BOOKLET\_Page\_083\_Image\_0002**



**3-4 Aft Zoom - Door Closed**



**Side - Door Closed 2**



**Side Opened 2**



**AUG 28\_23- FM ARCH \_ FULL RENDERING  
BOOKLET\_Page\_090\_Image\_0002**



**AUG 28\_23- FM ARCH \_ FULL RENDERING  
BOOKLET\_Page\_091\_Image\_0002**



**AUG 28\_23- FM ARCH \_ FULL RENDERING**  
**BOOKLET\_Page\_092\_Image\_0002**



**AUG 28\_23- FM ARCH \_ FULL RENDERING**  
**BOOKLET\_Page\_098\_Image\_0002**



**AUG 28\_23- FM ARCH \_ FULL RENDERING** **AUG 28\_23- FM ARCH \_ FULL RENDERING**  
**BOOKLET\_Page\_099\_Image\_0002** **BOOKLET\_Page\_100\_Image\_0002**



AUG 28\_23- FM ARCH \_ FULL RENDERING  
BOOKLET\_Page\_101\_Image\_0002



AUG 28\_23- FM ARCH \_ FULL RENDERING  
BOOKLET\_Page\_102\_Image\_0002



AUG 28\_23- FM ARCH \_ FULL RENDERING  
BOOKLET\_Page\_108\_Image\_0002

AUG 28\_23- FM ARCH \_ FULL RENDERING  
BOOKLET\_Page\_107\_Image\_0002





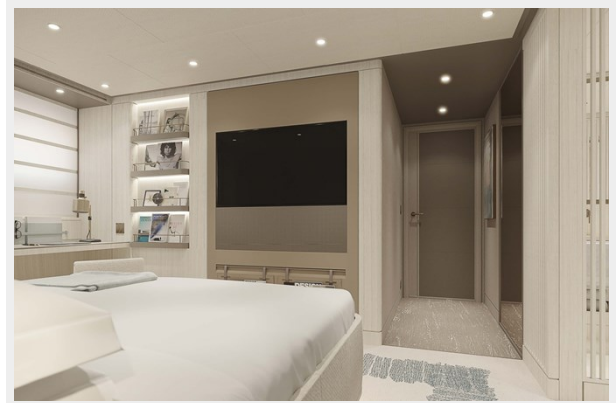
**AUG 28\_23- FM ARCH \_ FULL RENDERING**  
**BOOKLET\_Page\_109\_Image\_0002**



**AUG 28\_23- FM ARCH \_ FULL RENDERING**  
**BOOKLET\_Page\_114\_Image\_0002**

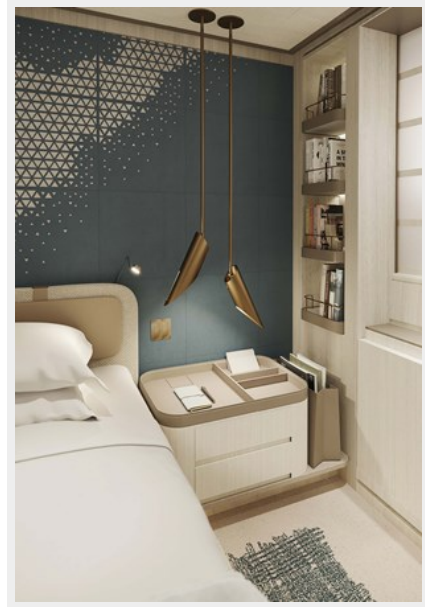


**AUG 28\_23- FM ARCH \_ FULL RENDERING** **AUG 28\_23- FM ARCH \_ FULL RENDERING**  
**BOOKLET\_Page\_115\_Image\_0002** **BOOKLET\_Page\_116\_Image\_0002**



AUG 28\_23- FM ARCH \_ FULL RENDERING  
BOOKLET\_Page\_118\_Image\_0002

AUG 28\_23- FM ARCH \_ FULL RENDERING  
BOOKLET\_Page\_117\_Image\_0002



AUG 28\_23- FM ARCH \_ FULL RENDERING AUG 28\_23- FM ARCH \_ FULL RENDERING  
BOOKLET\_Page\_119\_Image\_0002 BOOKLET\_Page\_124\_Image\_0002



**AUG 28\_23- FM ARCH \_ FULL RENDERING  
BOOKLET\_Page\_125\_Image\_0002**



**AUG 28\_23- FM ARCH \_ FULL RENDERING  
BOOKLET\_Page\_126\_Image\_0002**



**MY112 Concept renderings 01-06-  
2021\_Page\_06\_Image\_0001**



**MY112 Concept renderings 01-06-  
2021\_Page\_07\_Image\_0001**



**MY112 Concept renderings 01-06-  
2021\_Page\_09\_Image\_0001**



**MY112 Concept renderings 01-06-  
2021\_Page\_12\_Image\_0001**



## SEPT 623- FM ARCH GA - UPDATED BY FLOOR



# CONTACTS

---

Andrey Shestakov, leading yacht broker of the sales department of Shestakov Yacht Sales Inc. Shestakov Yacht Sales Inc., the official representative of the Miami/Fort Lauderdale FL headquarters.

## Contact details

---

Email: [andrey@shestakovyachtsales.com](mailto:andrey@shestakovyachtsales.com)

Web: [shestakovyachtsales.com/en/](http://shestakovyachtsales.com/en/)

## Telephones

---

USA: +1(954)274-4435

## Office hours

---

Monday – Saturday: **9:00 - 21:00** EDT

Sunday: **closed**

## Address

---



Harbour Towne Marina, 850 NE 3rd St,  
STE 213, Dania, FL 33004