

PURE PLEASURE — VIKING



Builder: VIKING

Year Built: 2007

Model: Sport Fisherman

Price: \$1,300,000 USD

Location: United States

LOA: 64' (19.51mm)

Beam: 19.16

Min Draft: 5' 2" (1.57mm)

Cruise Speed: 31 Knots Kts. (36 MPH)

Max Speed: 36 Knots Kts. (41 MPH)

Our experienced yacht broker, Andrey Shestakov, will help you choose and buy a yacht that best suits your needs **PURE PLEASURE — VIKING** from our catalogue. Presently, at Shestakov Yacht Sales Inc., we have a wide variety of yachts available on our sale's list. We also work in close contact with all the big yacht manufacturers from all over the world.

If you would like to buy a yacht **PURE PLEASURE — VIKING** or would like help answering any questions concerning purchasing, selling or chartering a yacht, please call **+1(954)274-4435**

TABLE OF CONTENTS

TABLE OF CONTENTS	2
SPECIFICATIONS	4
Overview	4
Basic Information	4
Dimensions	4
Speed, Capacities and Weight	4
Accommodations	4
Hull and Deck Information	5
Engine Information	5
PHOTOS	6
ProfilePic2	6
IMG_5192	6
IMG_5157	6
IMG_5256	6
image005	7
IMG_5236	7
image001 (6)	7
IMG_5243	7
IMG_5187	8
IMG_5186	8
image002	8
image012	8
image013	9
IMG_5235	9
image011	9
image015	9
image014	10
image016	10

image017	10
image020	10
image019	11
image018	11
image021	11
image022	11
image023	12
image024	12
image003	12
image004	12
image006	13
image007	13
image008	13
image009	13
image010	14
IMG_5185	14
IMG_5253	14
IMG_5254 (1)	14
IMG_5304	15
IMG_5254	15
CONTACTS	16
Contact details	16
Telephones	16
Office hours	16
Address	16

SPECIFICATIONS

Overview

PURE PLEASURE is a 64' Viking Convertible currently on the market. Fully tower rigged for tournament fishing and long range cruising. She is ready to take you to the fishing grounds wherever they might be. She is a must see for anyone seriously considering the purchase of one of Viking's best models of recent years.

***** 2200 ORIGINAL HOURS *****

Basic Information

Category: Sport Fisherman

Model Year: 2007

Year Built: 2007

Country: United States

Dimensions

LOA: 64' (19.51mm)

Beam: 19.16

Min Draft: 5' 2" (1.57mm)

Speed, Capacities and Weight

Cruise Speed: 31 Knots Kts. (36 MPH)

Max Speed: 36 Knots Kts. (41 MPH)

Water Capacity: 325 Gallons

Holding Tank: 200 Gal Gallons

Fuel Capacity: 2000 Gal Gallons

Accommodations

Total Cabins: 4

Total Heads: 4

Hull and Deck Information

Hull Material: Fiberglass

Engine Information

Engines: 2

Manufacturer: MTU

Engine Type: Inboard

Fuel Type: Diesel

PHOTOS

ProfilePic2



IMG_5192



IMG_5157



IMG_5256



image005



IMG_5236



image001 (6)



IMG_5243



IMG_5187



IMG_5186



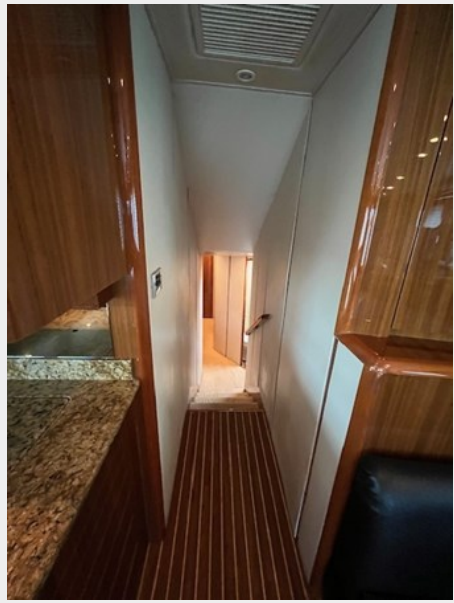
image002



image012



image013



IMG_5235



image011



image015



image014



image016



image017



image020



image019



image018



image021



image022



image023



image024



image003



image004



image006



image007



image008



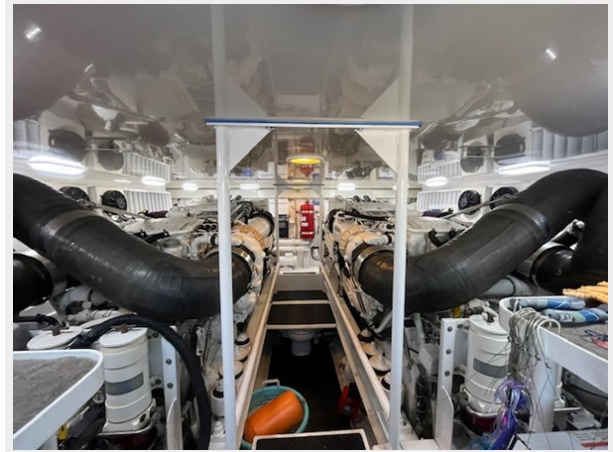
image009



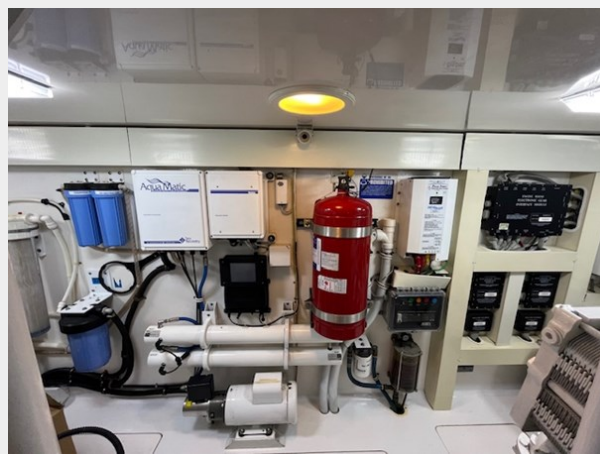
image010



IMG_5185



IMG_5253



IMG_5254 (1)



IMG_5254



IMG_5304



CONTACTS

Andrey Shestakov, leading yacht broker of the sales department of Shestakov Yacht Sales Inc. Shestakov Yacht Sales Inc., the official representative of the Miami/Fort Lauderdale FL headquarters.

Contact details

Email: andrey@shestakovyachtsales.com

Web: shestakovyachtsales.com/en/

Telephones

USA: +1(954)274-4435

Office hours

Monday – Saturday: **9:00 - 21:00** EDT

Sunday: **closed**

Address



Harbour Towne Marina, 850 NE 3rd St,
STE 213, Dania, FL 33004